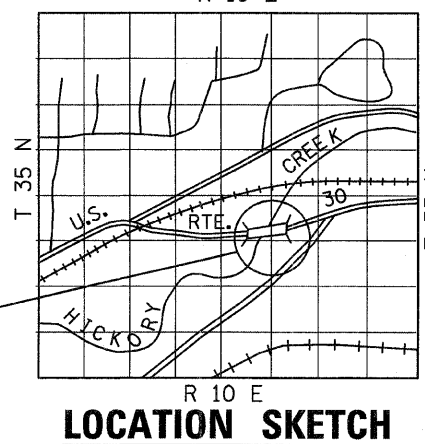
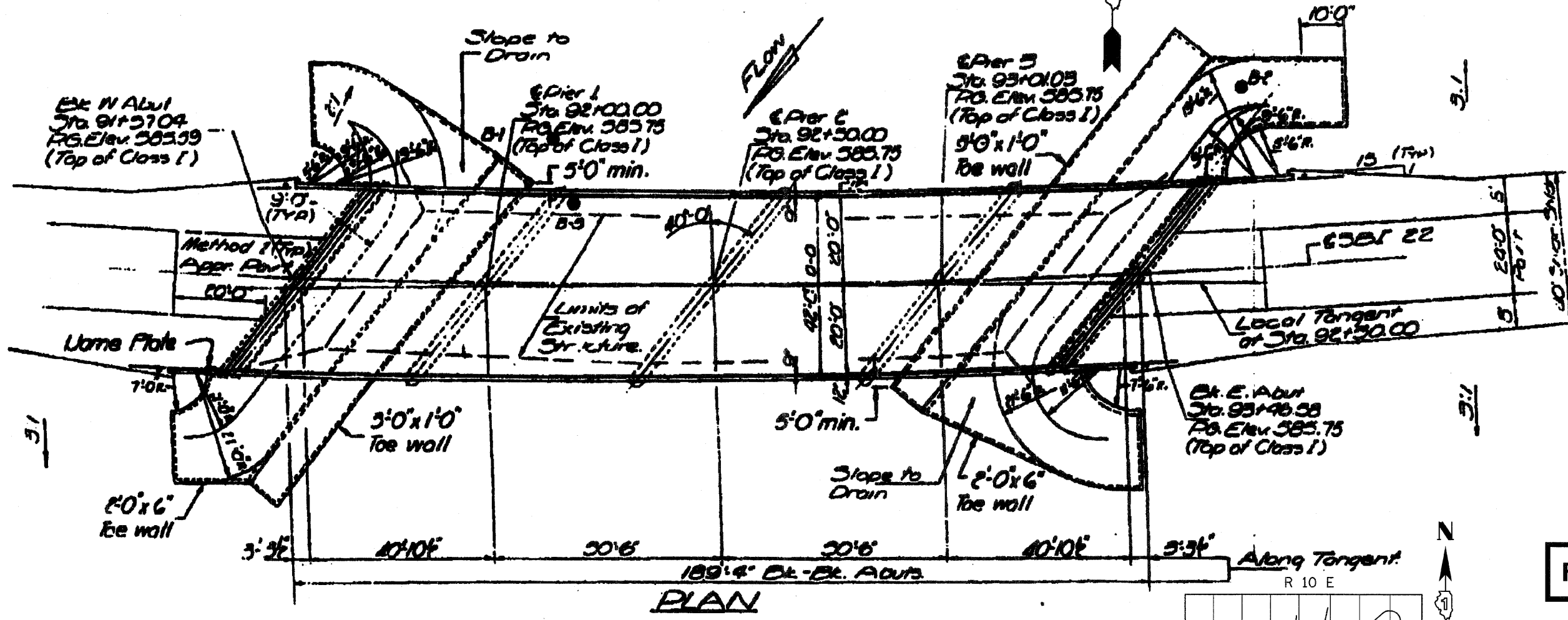
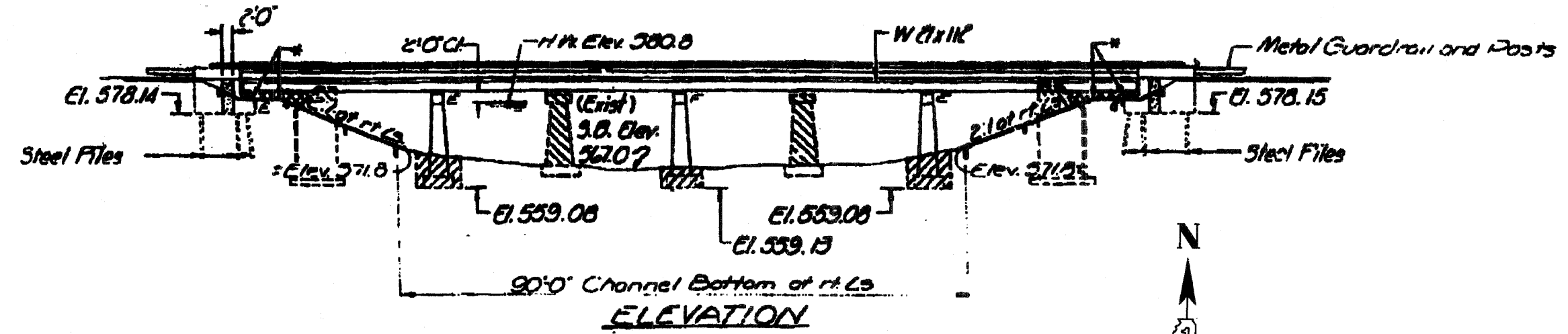


F.A.P. RTE.	SECTION	COUNTY	TOTAL SHEETS	SHEET NO.
607	13 B-I-1	WILL	16	7
STA.	TO STA.			
FED. ROAD DIST. NO.	ILLINOIS	FED. AID PROJECT		

CONTRACT NO. 60C89



LOCATION OF STRUCTURE

LOCATION SKETCH

FOR INFORMATION ONLY

REVISIONS	
NAME	DATE

ILLINOIS DEPARTMENT OF TRANSPORTATION
 GENERAL PLAN & ELEVATION
 U.S. RTE. 30
 OVER
 HICKORY CREEK
 F.A.P. RTE. 607 SECTION: 13 B-I-1
 WILL COUNTY
 STRUCTURE NO. 099-0105
 SCALE: NONE DRAWN BY: D.L./F.M.
 DATE: JANUARY 08, 2009 CHECKED BY: B.N.S./S.J.P.
 CHRISTIAN-ROGE & ASSOC., INC.
 CHICAGO ILLINOIS