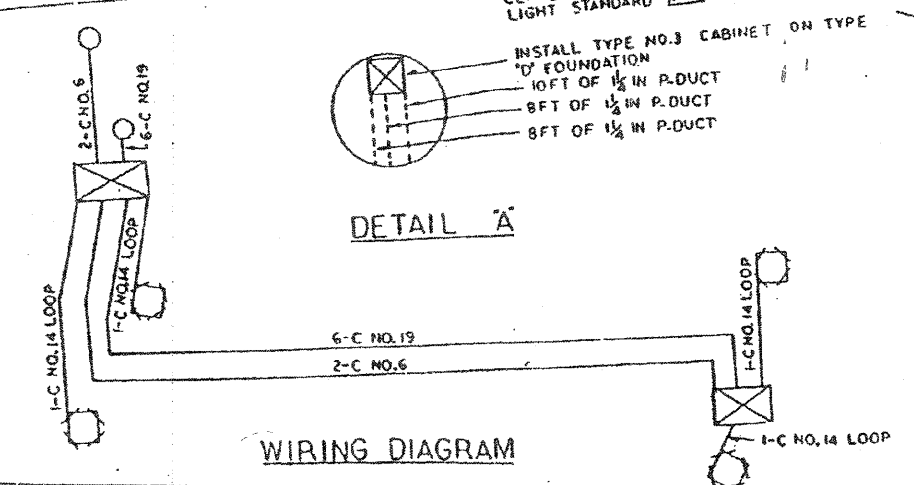


SCHEDULE OF QUANTITIES

273	296 LIN. FT.	ELECTRICAL CABLE IN CONDUIT, NO. 5, 2/C
266	296 LIN. FT.	ELECTRICAL CABLE IN CONDUIT, NO. 14, 3/C
805	892 LIN. FT.	ELECTRICAL CABLE IN CONDUIT, NO. 19, 5/C
	6 IN. FT.	ELECTRICAL CABLE IN CONDUIT, NO. 18, 12/C
	6 IN. FT.	G.S. CONDUIT IN TRENCH, 1-1/2"
	6 IN. FT.	G.S. CONDUIT IN TRENCH, 2"
61	48 LIN. FT.	G.S. CONDUIT ATTACHED TO STRUCTURE, 1-1/2"
15	48 LIN. FT.	G.S. CONDUIT ATTACHED TO STRUCTURE, 2"
	48 LIN. FT.	INSTALL TELEPHONE DUCT
486	296 LIN. FT.	INSTALL POLYETHYLENE DUCT, 1-1/2"
623	687 LIN. FT.	INSTALL POLYETHYLENE DUCT, 2"
	EACH	CONCRETE FOUNDATION, TYPE A
	EACH	CONCRETE FOUNDATION, TYPE D
	EACH	HEAVY DUTY H. HOLE
	EACH	FRIDGEMORE
1001	296 LIN. FT.	TRENCH AND BACKFILL
	6 SQ. YD.	BITUMINOUS CONCRETE SURFACE REMOVE AND REPLACEMENT
	EACH	SERVICE INSTALLATION, TYPE C
	EACH	CABINET HOUSING EQUIPMENT, PEDESTAL MOUNTED, E.S.P. 1
	EACH	CABINET HOUSING EQUIPMENT, PEDESTAL MOUNTED, E.S.P. 2
	EACH	CABINET HOUSING EQUIPMENT, POLE MOUNTED, E.S.P. 1
	EACH	CABINET HOUSING EQUIPMENT, POLE MOUNTED, E.S.P. 2
	EACH	CABINET HOUSING EQUIPMENT, ATTACHED TO STRUCTURE, E.S.P. 1
	EACH	CABINET HOUSING EQUIPMENT, ATTACHED TO STRUCTURE, E.S.P. 2
164	185 LIN. FT.	INDUCTION LOOP
	EACH	TONE EQUIPMENT 3 FREQUENCY TRANSMITTER
	EACH	TONE EQUIPMENT 3 FREQUENCY RECEIVER
	EACH	TONE EQUIPMENT POWER SUPPLY
	EACH	TONE EQUIPMENT MOUNTING FRAME
	EACH	INDUCTION LOOP DETECTOR POWER SUPPLY
	EACH	INDUCTION LOOP DETECTOR SENSOR UNIT



- LEGEND
- INDUCTION LOOP
 - CABINET
 - ▣ JUNCTION BOX
 - PULL POINT
 - ⊙ HANDHOLE
 - SERVICE INSTALLATION
 - DUCT
 - CONDUIT
 - X-X FENCE
 - GUARD RAIL

FOR INFORMATION ONLY

(C214-721 1 1 1) (C226-721 1 1 1)

STATE OF ILLINOIS
DIVISION OF HIGHWAYS
CHICAGO AREA EXPRESSWAY SURVEILLANCE PROJECT

138TH STREET INSTALLATION

ROUTE NO.	SECTION	COUNTY	TOTAL SHEETS	SHEET NO.
21 31 8 20	4	COOK	40	16
DRAWN BY	SCALE	DATE	CHECKED BY	APPROVED BY
PSC	NONE	6/15/09	RDB	JMLD