

Joint Size	"C" at 50°F	"D" at 50°F
2"	2"	1½" Min.
2½"	2½"	1¾" Min.
4"	3"	2½" Min.

INSTALLATION NOTES

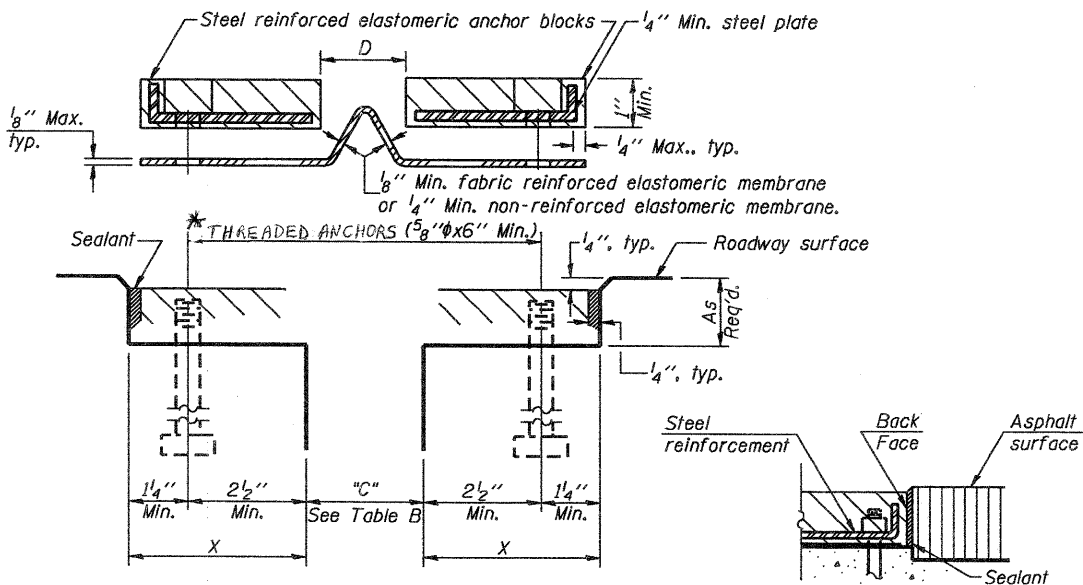
- ① Install continuous seal in roadway, parapet, curb, and sidewalk.
- ② Install anchor blocks as indicated.

Note A:
Maximum spacing of anchor bolts shall be 12" centers.

SKREW LIMITATIONS

The details of the anchor blocks and the elastomeric membrane in the parapet, as shown, are for up to 50° skews. For skews greater than 50°, the anchor blocks and the elastomeric membrane, installed according to dimension "D", might require modifications to insure a minimum clearance of ½" from centerline of anchor studs to edge of parapet opening. The anchor blocks and the elastomeric membrane shall also be installed to the top of the parapet with the anchor studs spaced at ±12" cts.

STATE OF ILLINOIS
DEPARTMENT OF TRANSPORTATION



CROSS SECTION

ANCHOR BLOCK WITH ASPHALT SURFACE

TABLE B

Structure Number	Location	"C"
016-0150	Pier 3	3"
016-0153	S. Abutment	2"
016-0153	N. Abutment	2"
016-0157	S. Abutment	2"
016-0160	Pier 2	3"

GENERAL NOTES

Continuous Seal Neoprene Expansion Joint shall consist of molded anchor blocks of elastomer and steel, field assembled over continuous lengths of elastomeric membrane.

The elastomeric membrane shall be premolded with a single or a double upward convolution that will have a "memory" to return to its molded position upon joint closure.

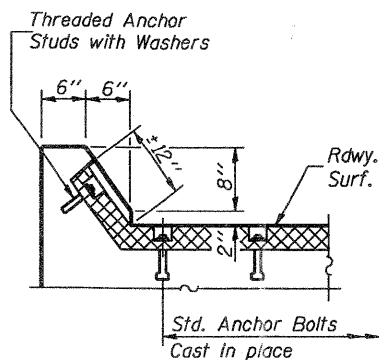
The convolution length shall be such that the extended length will not be greater than the manufactured length when the joint is fully expanded in its design range and will not protrude above the anchor blocks when the joint is fully compressed.

Joint openings shall be adjusted according to Article 503.10(c) of the Standard Specifications when the deck is poured at an ambient temperature other than 50° F.

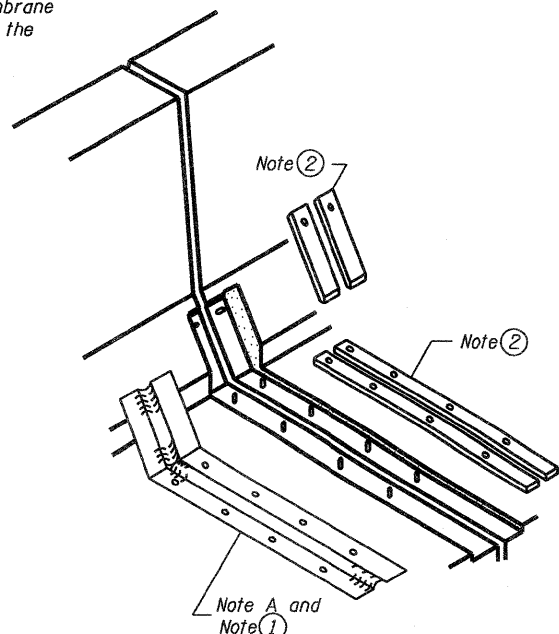
The parapet and roadway membrane shall be made continuous by an approved vulcanizing process. Lapping will not be permitted.

The contract unit price "Feet" for Neoprene Expansion Joint (Dam) shall include removal of the existing anchor blocks and elastomeric membrane. The existing anchor studs shall be reused.

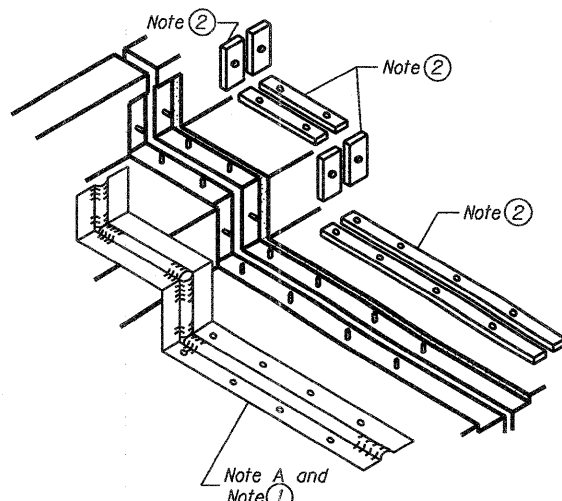
* New threaded anchors to be epoxy grouted in accordance with Art. 584 of the Standard Specifications, spaced between existing anchors. Existing anchors to be cut flush with top of concrete. Cost included with Neoprene Expansion Joint (Dam).



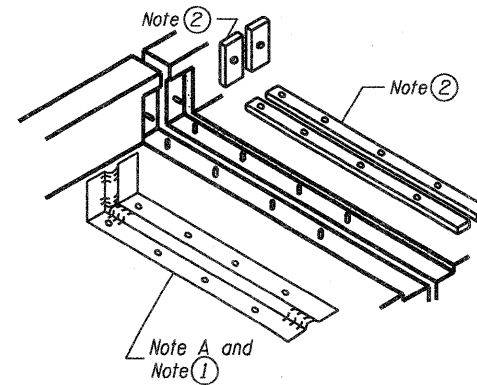
AT CURB



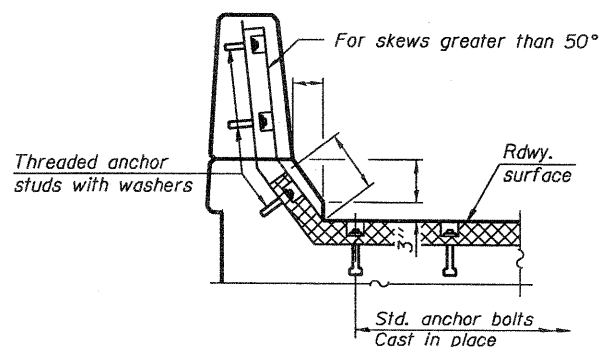
AT PARAPET



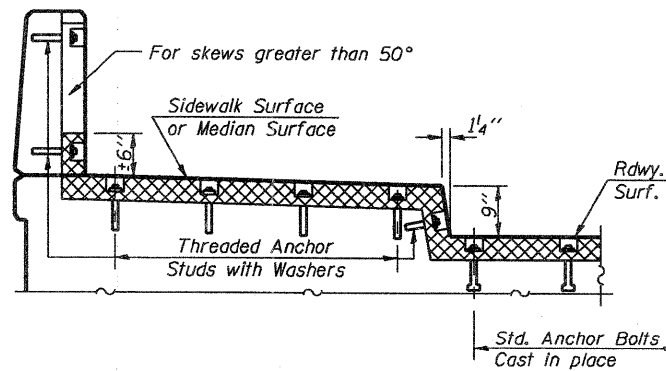
AT SIDEWALK OR MEDIAN



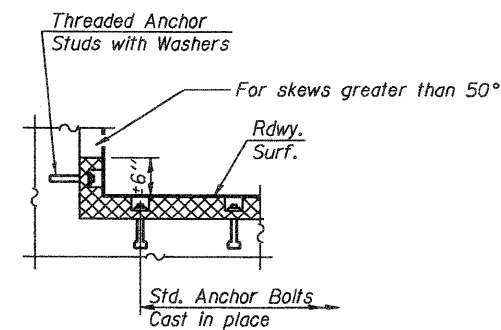
AT WALL



AT PARAPET



AT SIDEWALK OR MEDIAN TYPICAL END TREATMENTS



AT WALL

DESIGNED	LAS
CHECKED	DAZ
DRAWN	SAW
CHECKED	LAS

EJ-CS

10-22-04

ZROKA
engineering
Zroka Engineering, P.C.
4216 North Hermitage
Chicago, IL 60613

**CONTINUOUS SEAL TYPE
NEOPRENE EXPANSION JOINT
BISHOP FORD EXPRESSWAY (I-94)
COOK COUNTY
STATION 118+00 TO 485+91
VARIOUS BRIDGES**

SHEET NO. 13 OF 13 SHEETS	F.A.I. RTE.	SECTION	COUNTY	TOTAL SHEETS	SHEET NO.
	94	(0312-708W,ETC. & 1315)RS-4	COOK	167	121
S.N. VARIES			CONTRACT NO. 60C08		
FED. ROAD DIST. NO. 7 ILLINOIS FED. AID PROJECT					