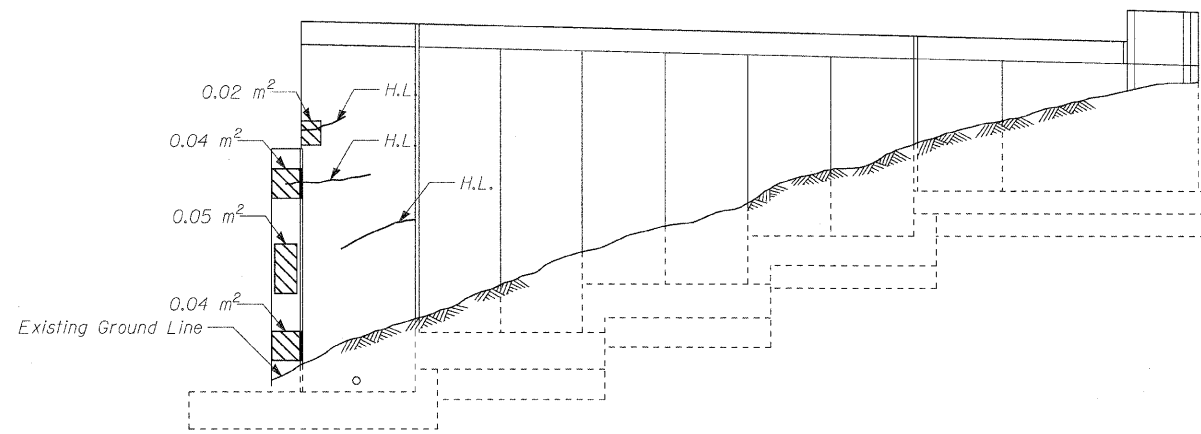
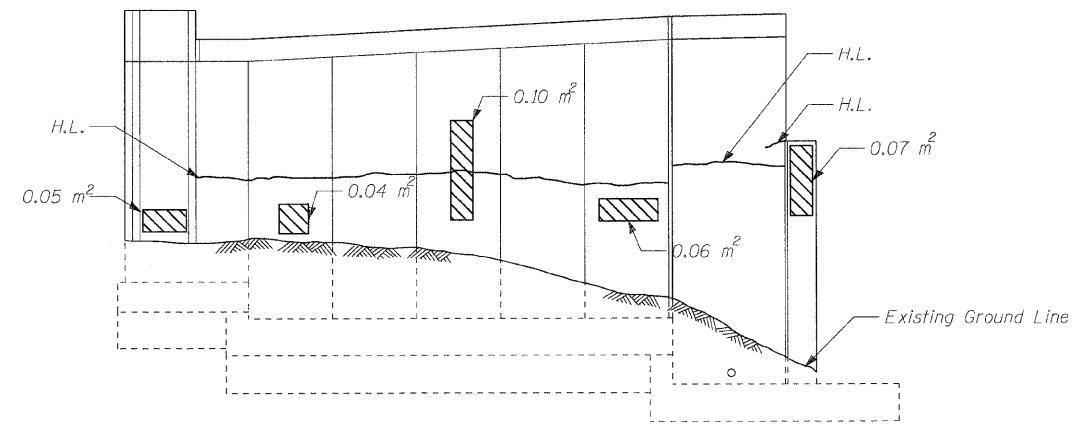


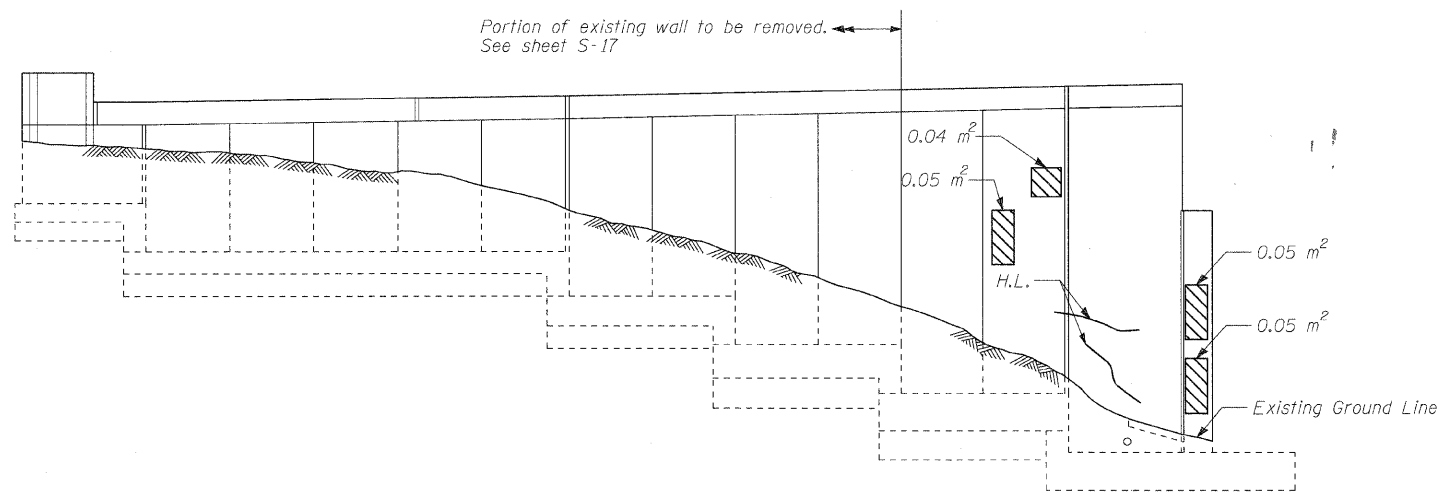
STATE OF ILLINOIS  
DEPARTMENT OF TRANSPORTATION



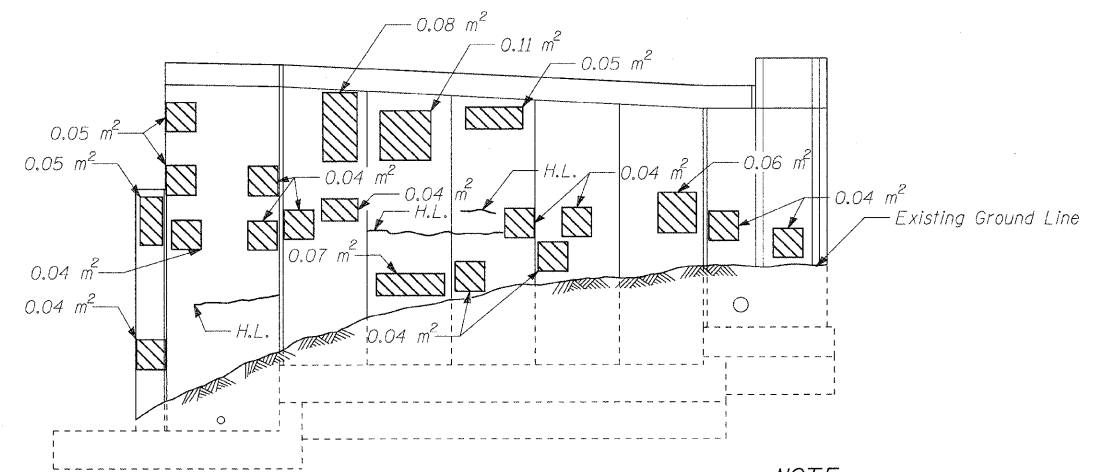
NORTHWEST RETAINING WALL ELEVATION



NORTHEAST RETAINING WALL ELEVATION



SOUTHWEST RETAINING WALL ELEVATION



SOUTHEAST RETAINING WALL ELEVATION

**LEGEND**

- Structural Repair of Concrete (Depth  $\leq$  125 mm)
- Crack Length 1590

Note:  
Crack widths are 3 mm  $\pm$  1 mm unless otherwise noted.  
H.L. denotes Hairline Crack - Not to be sealed

**BILL OF MATERIAL**

Item	Unit	Total
Structural Repair of Concrete (Depth equal to or less than 125 mm)	Sq. m	1.9

**NOTE:**

Repairs shall include but not be limited to the areas shown. The actual areas to be determined by the Engineer at the time of construction.

Repairs indicated on plans are based on in-depth inspection performed on April 2002. Total quantity reported in Bill of material has been increased by 15% from the original to take into account deterioration that may have occurred after inspection

**RETAINING WALLS REPAIRS  
STRUCTURE NO. 016-2034**

DESIGNED - EKM
CHECKED - SCD
DRAWN - RD
CHECKED - EKM

**Ciorba Group, Inc.**  
CONSULTING ENGINEERS  
5507 North Cumberland Avenue, Suite 402 Chicago, Illinois 60656  
Tel. 773.775.4009 Fax 773.775.4014 Email chicago@ciorba.com

SHEET NO. S-22	F.A.I. RTE.	SECTION	COUNTY	TOTAL SHEETS	SHEET NO.
S-26 SHEETS	57	1818.3B-R	COOK	58	46
			CONTRACT NO. 60862		
FED. ROAD DIST. NO.		ILLINOIS FED. AID PROJECT			

rdn:ley

1/16/2004

nt:\pro\13153\125th\design\structural\road\13153-02-F5-22.DGN