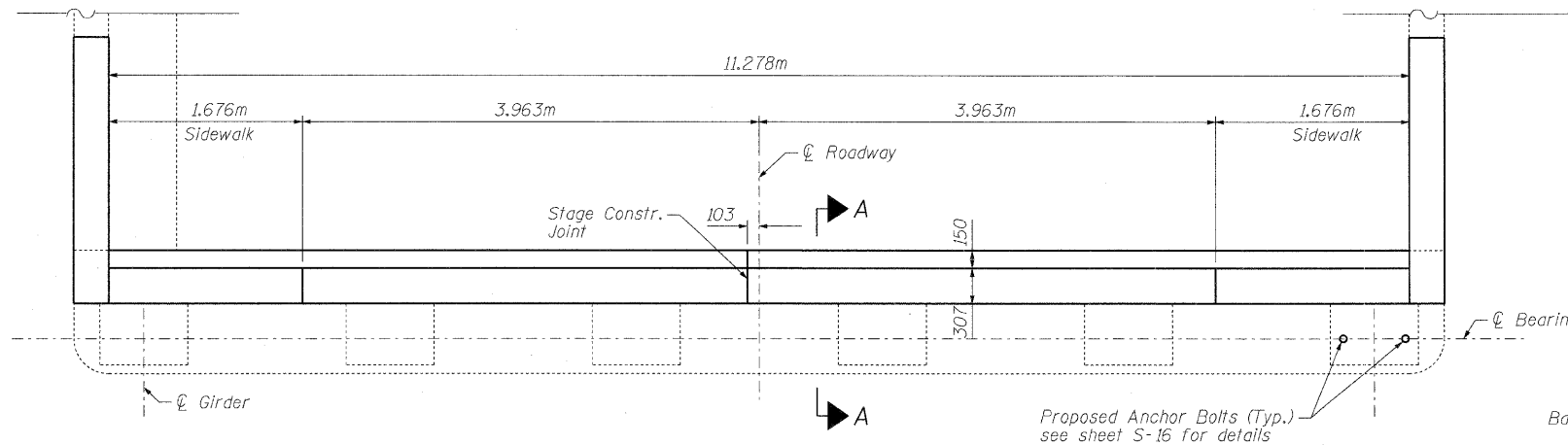
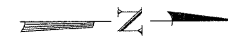
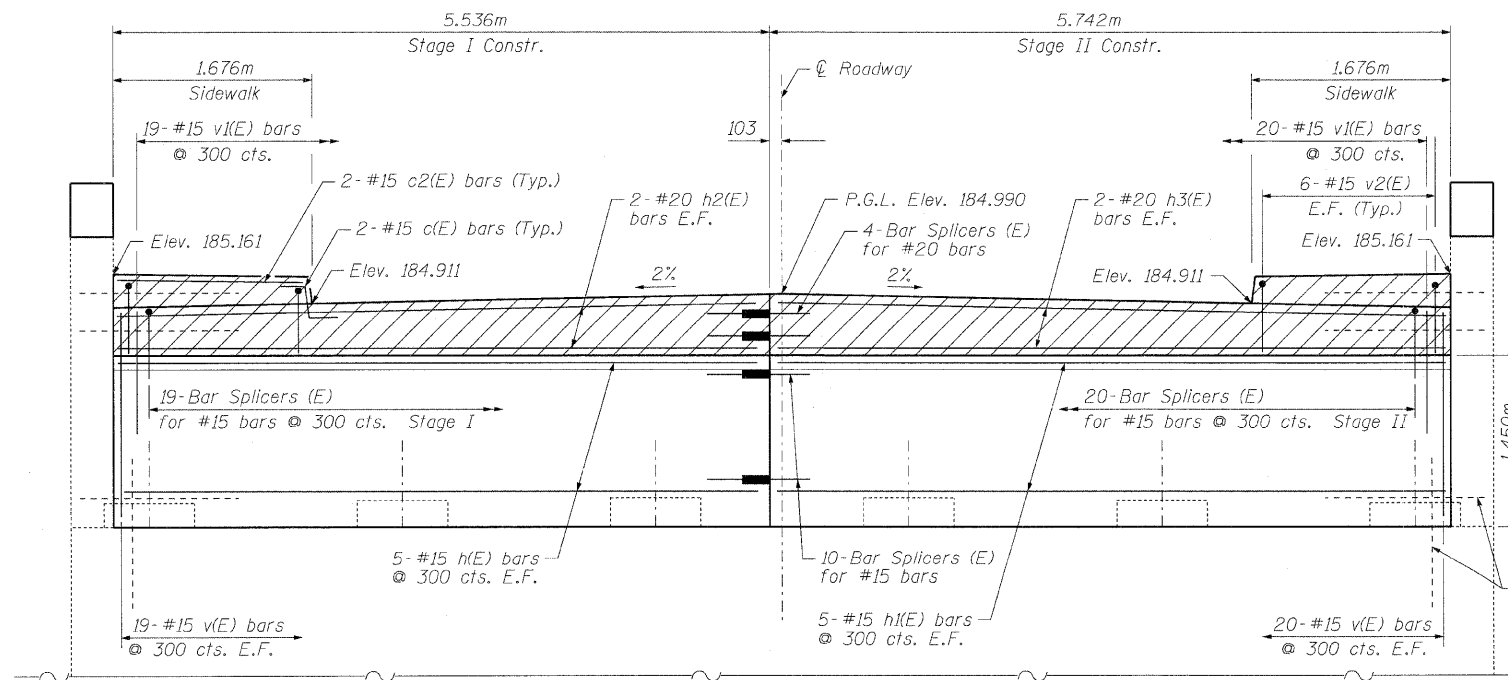


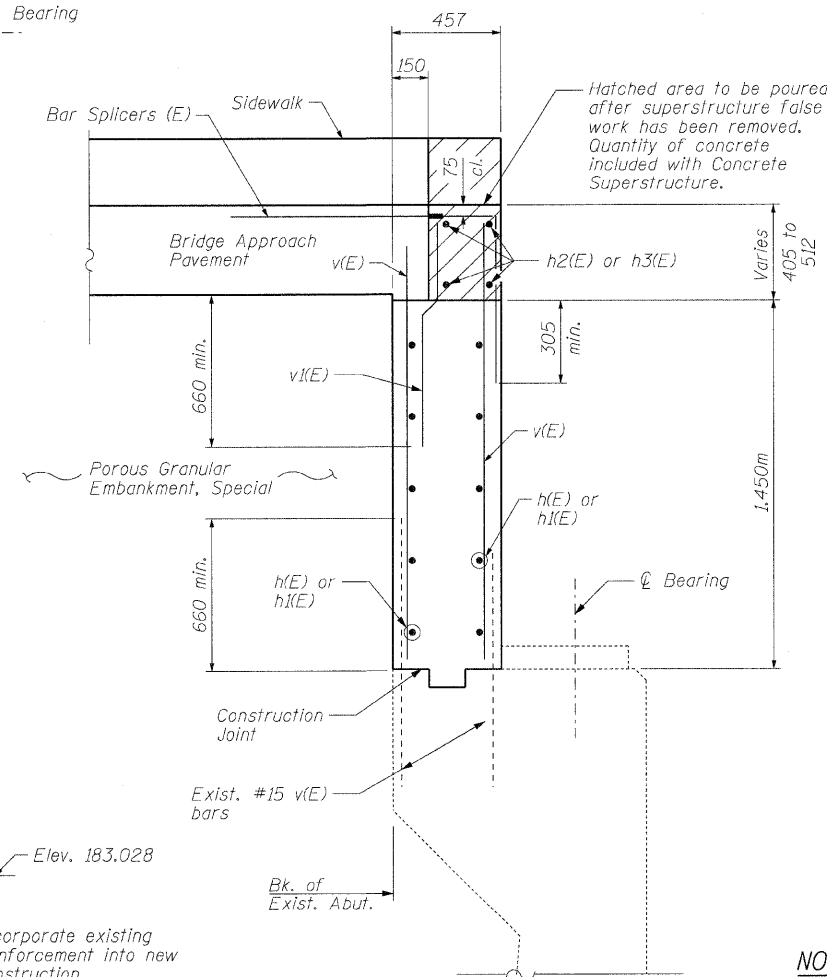
STATE OF ILLINOIS  
DEPARTMENT OF TRANSPORTATION



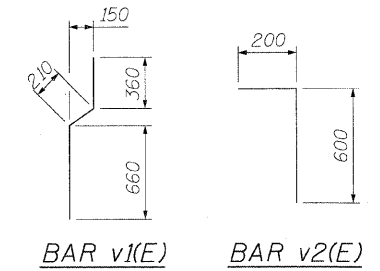
**WEST ABUTMENT PLAN**  
East Abutment Similar



**WEST ABUTMENT ELEVATION**  
East Abutment Similar



**SECTION A-A**



**BAR v1(E)**      **BAR v2(E)**

**BILL OF MATERIAL**

Bar	No.	Size	Length (m)	Shape
h(E)	20	#15	5.460	—
h <sub>1</sub> (E)	20	#15	5.660	—
h <sub>2</sub> (E)	8	#20	5.460	—
h <sub>3</sub> (E)	8	#20	5.660	—
c(E)	8	#15	0.730	—
c <sub>2</sub> (E)	8	#15	1.590	—
v(E)	156	#15	1.400	—
v <sub>1</sub> (E)	78	#15	1.230	—
v <sub>2</sub> (E)	48	#15	0.800	—
Concrete Sealer		Sq. m	46	
Concrete Structures		Cu. m	14.9	
Reinforcement Bars, Epoxy Coated		Kg	1,140	
Structure Excavation		Cu. m	52	
Bar Splicers		Each	106	
Porous Granular Embankment, Special		Cu. m	20	

For two (2) abutments.

**NOTES:**

Reinforcement bars designated (E) shall be epoxy coated.

Apply concrete sealer to bridge side of backwall and bearing seat at both abutments.

Dimensions for bar c(E) shown on sheet S-10.

For structure excavation details see sheet S-2.

**WEST & EAST ABUTMENT DETAILS**  
**STRUCTURE NO. 016-2034**

**LAP SPLICES**

#15 bars - 660  
#20 bars - 790

DESIGNED -	EKM
CHECKED -	SCD
DRAWN -	RD
CHECKED -	EKM

**CG** Ciorba Group, Inc.  
CONSULTING ENGINEERS  
5507 North Cumberland Avenue, Suite 402 Chicago, Illinois 60656  
Tel. 773.775.4009 Fax 773.775.4014 Email chicago@ciorba.com

SHEET NO. S-19	F.A.I. RTE.	SECTION	COUNTY	TOTAL SHEETS	SHEET NO.
	57	1818.3B-R	COOK	58	43
S-26 SHEETS		CONTRACT NO. 60862			
FED. ROAD DIST. NO.		ILLINOIS FED. AID PROJECT			

rdan/leg

1/16/2009