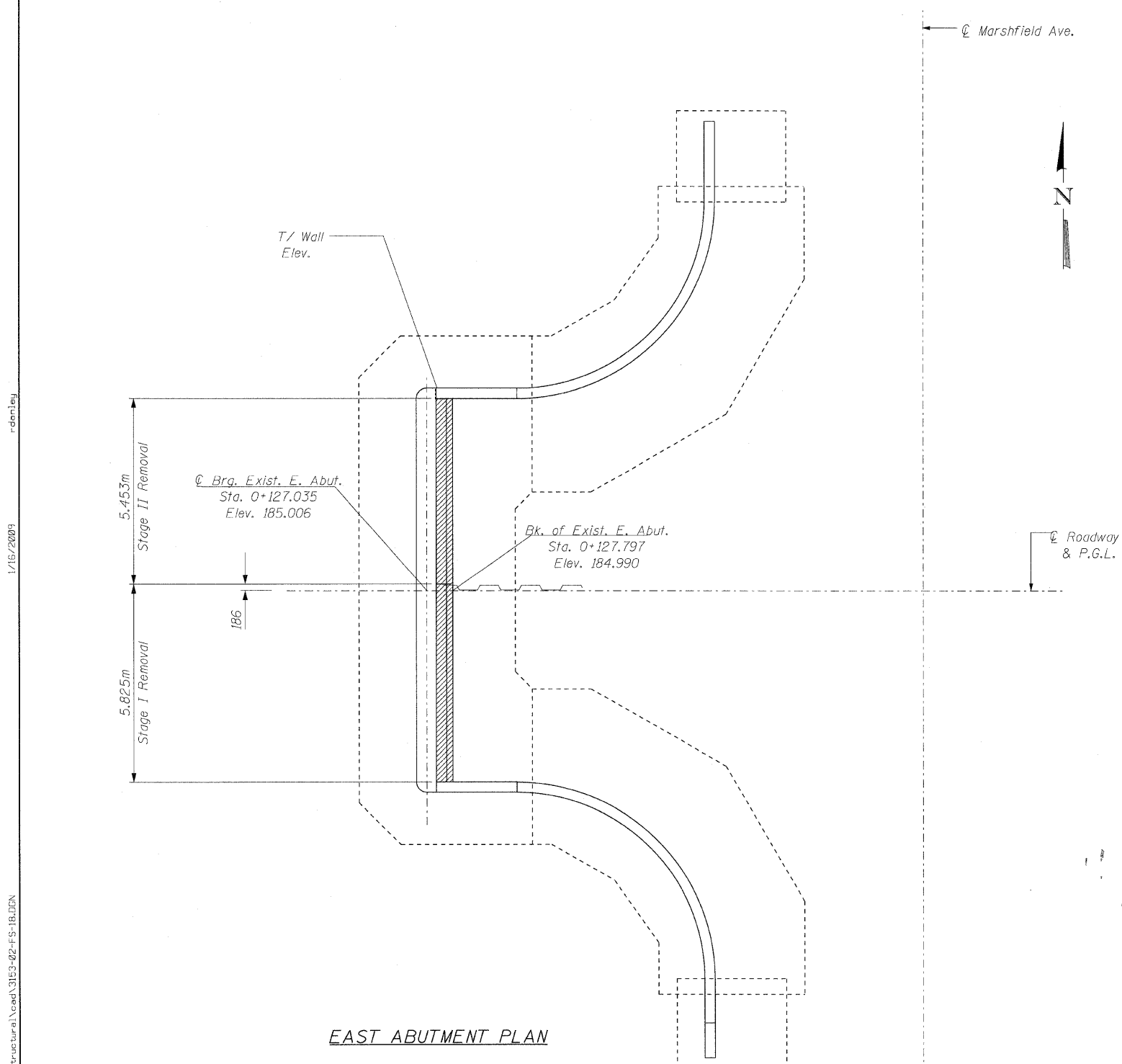
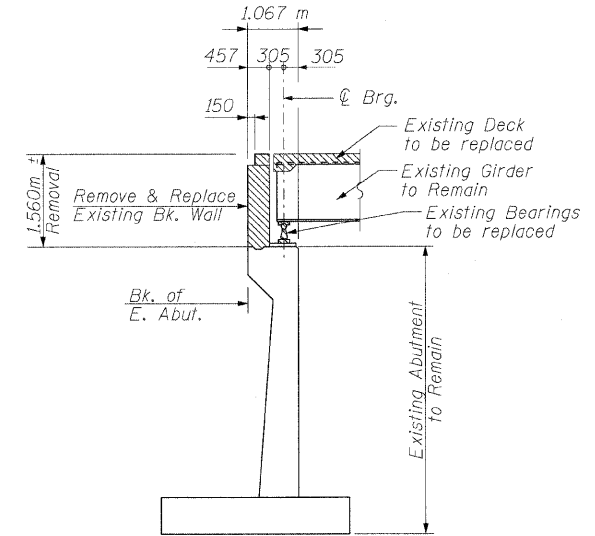


STATE OF ILLINOIS
DEPARTMENT OF TRANSPORTATION



EAST ABUTMENT PLAN



SECTION THRU EAST ABUTMENT

NOTES:

- For Abutment Elevation see Sheet S-17.
- Existing vertical reinforcement protruding from the abutment backwall and horizontal reinforcement protruding from the wingwalls to remain in place. The existing reinforcement shall be sandblasted clean, straightened and incorporated into the new construction. Any reinforcement bars that are damaged during concrete removal operations shall be repaired or replaced using an approved bar splicer or anchorage system. Cost included with Concrete Removal.

BILL OF MATERIAL

ITEM	UNIT	TOTAL
Concrete Removal	Cu. m	62.5

LEGEND

Concrete Removal

DESIGNED -	EKM
CHECKED -	SCD
DRAWN -	RD
CHECKED -	EKM

Giorba Group, Inc.
CONSULTING ENGINEERS
5507 North Cumberland Avenue, Suite 402 Chicago, Illinois 60656
Tel. 773.775.4009 Fax 773.775.4014 Email chicago@giorba.com

EAST ABUTMENT REMOVAL
STRUCTURE NO. 016-2034

SHEET NO. S-18	F.A.I. RTE.	SECTION	COUNTY	TOTAL SHEETS	SHEET NO.
	57	1818.3B-R	COOK	58	42
S-26 SHEETS		CONTRACT NO. 60862			
FED. ROAD DIST. NO.		ILLINOIS FED. AID PROJECT			

1/15/2009

M:\p\proj\3153\125\h\des\sign\structural\Coord\3153-02-FS-16.DGN