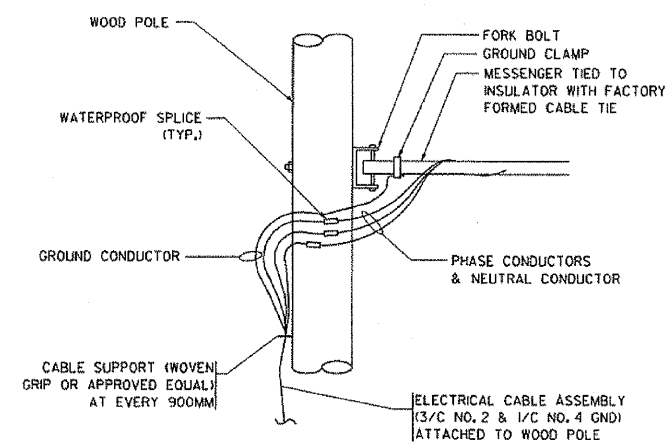
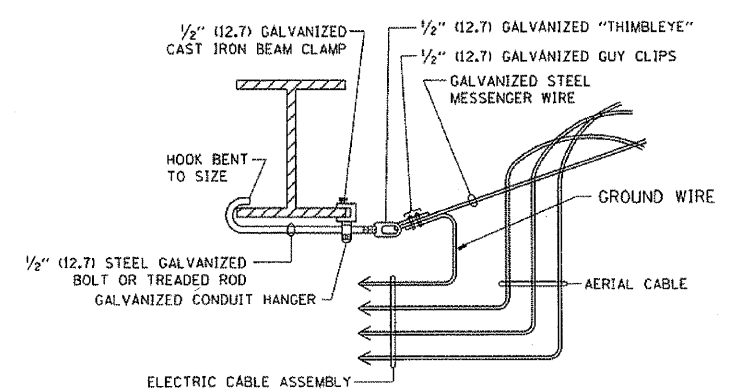


CONTRACT NO.				
F.A. RTE.	SECTION	COUNTY	TOTAL SHEETS	SHEET NO.
57	1818.3B-R	COOK	58	21
STA.		TO STA.		
FED. ROAD DIST. NO.	ILLINOIS	FED. AID PROJECT		



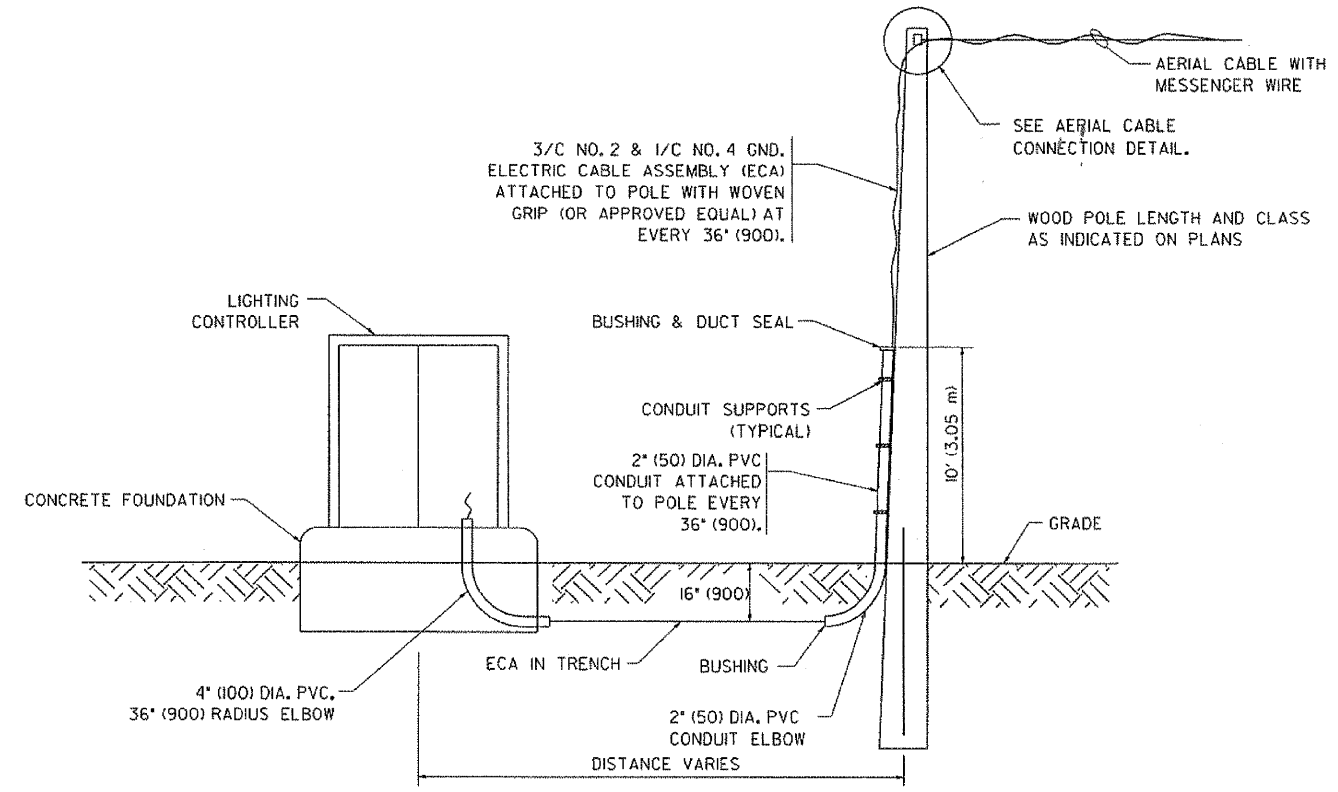
AERIAL CABLE CONNECTION DETAIL
N.T.S.



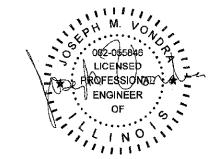
AERIAL CABLE ATTACHED TO STRUCTURE
NOT TO SCALE

NOTES:

1. ALL DIMENSIONS IN INCHES (MILLIMETERS) UNLESS OTHERWISE INDICATED.
2. SEE PROPOSED LIGHTING PLAN FOR CONDUIT, CABLE AND ROUTING.
3. THE CONTRACTOR SHALL PROVIDE INTERMEDIATE SUPPORTS TO MAINTAIN MINIMUM CLEARANCES. REFER TO AERIAL CABLE ATTACHED TO STRUCTURE DETAIL.
4. COST OF SPLICES AND MOUNTING HARDWARE SHALL BE INCLUDED IN THE UNIT PRICE FOR AERIAL CABLE.



WOOD POLE TO LIGHTING CONTROLLER WIRING CONNECTION DETAIL
N.T.S.



REVISIONS	NAME	DATE
		08/08/03

ILLINOIS DEPARTMENT OF TRANSPORTATION
TEMPORARY AERIAL CABLE INSTALLATION
SCALE: VERT. NONE
HORIZ.
DRAWN BY
CHECKED BY
BE-801

FILE NAME = m:\p\03\353\25\sh\design\lighting\125TH ST_8.dwg

PLOT DATE = 4/16/2009
PLOT SCALE = 50.000 / IN.
USER NAME = bowerd

Ciorba Group, Inc.
CONSULTING ENGINEERS
5507 North Cumberland Avenue, Suite 402
Chicago, Illinois 60656
Tel. 773.775.4009 Fax 773.775.4014

USER NAME = dmcrr:ls	DESIGNED - JMV	REVISED -
PLOT SCALE = 0.2000 M / MM.	DRAWN - MB	REVISED -
PLOT DATE = 1/16/2009	CHECKED - JMV	REVISED -
	DATE - 1/16/2009	REVISED -

STATE OF ILLINOIS DEPARTMENT OF TRANSPORTATION

**FAI 57/INTERSTATE 57
125TH STREET OVER I-57
LIGHTING DETAILS**
SCALE: SHEET NO. 8 OF 10 SHEETS STA. TO STA.

F.A.I. RTE.	SECTION	COUNTY	TOTAL SHEETS	SHEET NO.
57	1818.3B-R	COOK	58	22
FED. ROAD DIST. NO. - ILLINOIS			FED. AID PROJECT	
			CONTRACT NO. 60862	