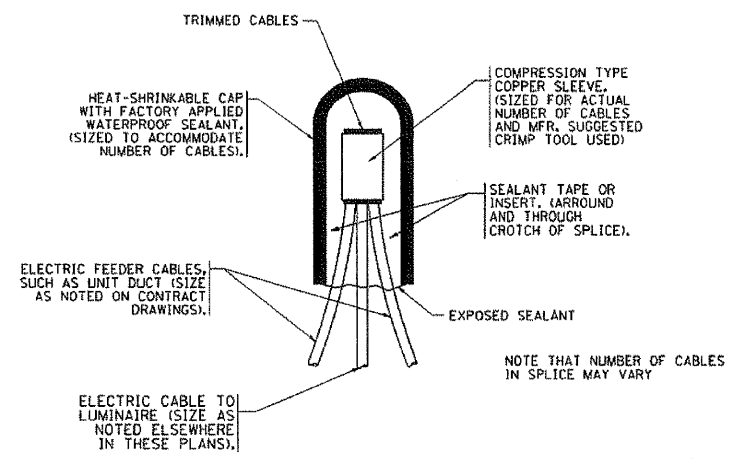
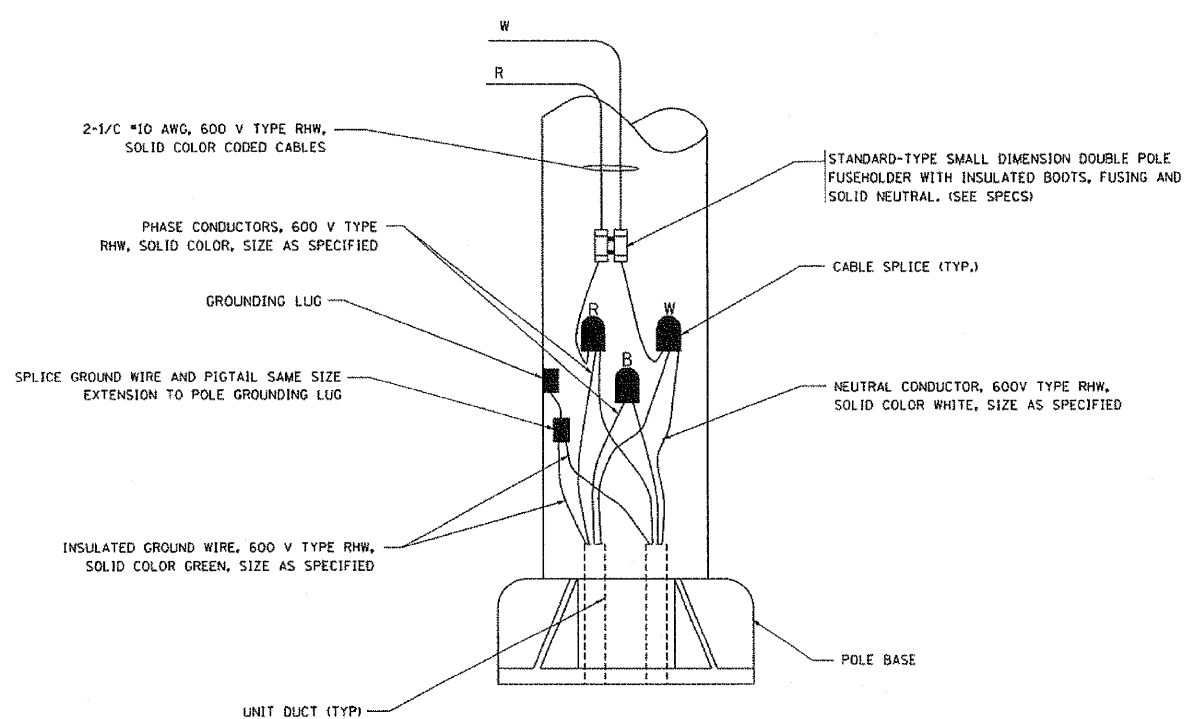


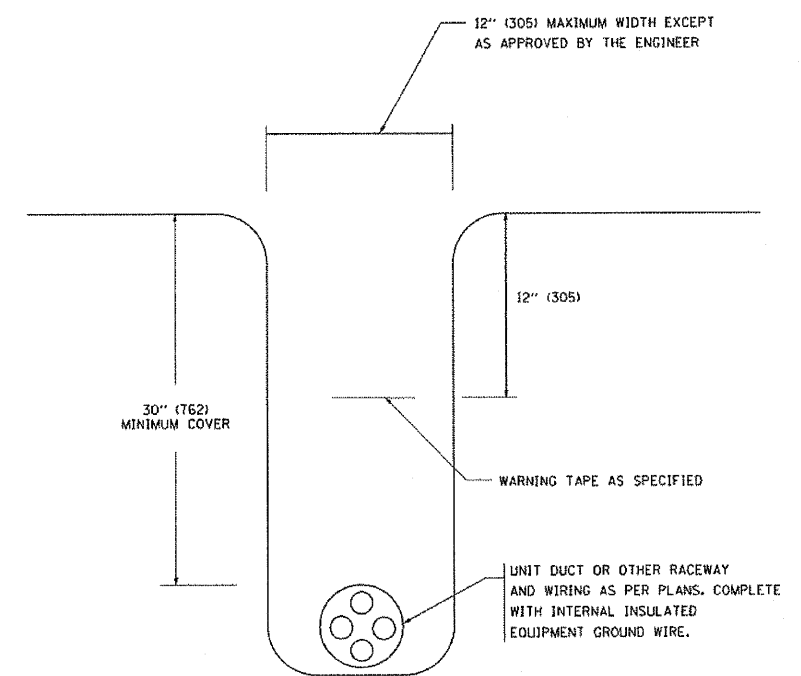
F.A.I. RTE.		SECTION	COUNTY	TOTAL SHEETS	SHEET NO.
57		1818.3B-R	COOK	58	20
STA.		TO STA.			
FED. ROAD DIST. NO.		ILLINOIS FED. AID PROJECT			



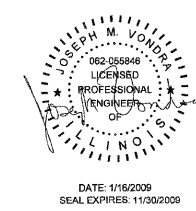
**TYPICAL SPLICE DETAIL**  
N.T.S.



**POLE WIRING DETAIL**  
N.T.S.



**TYPICAL WIRING IN TRENCH DETAIL**  
N.T.S.



REVISIONS	
NAME	DATE
	08/08/03

ILLINOIS DEPARTMENT OF TRANSPORTATION  
**MISC. ELECTRICAL DETAILS SHEET A**  
SCALE: VERT. NONE  
DRAWN BY: BE-702  
CHECKED BY:

FILE NAME = c:\pco\31533\25th\design\lighting\125TH\_ST\_7\_detail.dwg

PLOT DATE = 1/16/2009  
PLOT SCALE = 0.8000 / IN.  
USER NAME = bward

**CG** **Ciorba Group, Inc.**  
CONSULTING ENGINEERS  
5507 North Cumberland Avenue, Suite 402  
Chicago, Illinois 60658  
Tel. 773.775.4009 Fax 773.775.4014

USER NAME = dmorris	DESIGNED - JMV	REVISED -
	DRAWN - MB	REVISED -
PLOT SCALE = 0.8000 M / MM.	CHECKED - JMV	REVISED -
PLOT DATE = 1/16/2009	DATE - 1/16/2009	REVISED -

**STATE OF ILLINOIS**  
**DEPARTMENT OF TRANSPORTATION**

**FAI 57/INTERSTATE 57**  
**125TH STREET OVER I-57**  
**LIGHTING DETAILS**  
SCALE: SHEET NO. 7 OF 10 SHEETS STA. TO STA.

F.A.I. RTE.	SECTION	COUNTY	TOTAL SHEETS	SHEET NO.
57	1818.3B-R	COOK	58	21
CONTRACT NO. 60862				
FED. ROAD DIST. NO.		ILLINOIS FED. AID PROJECT		