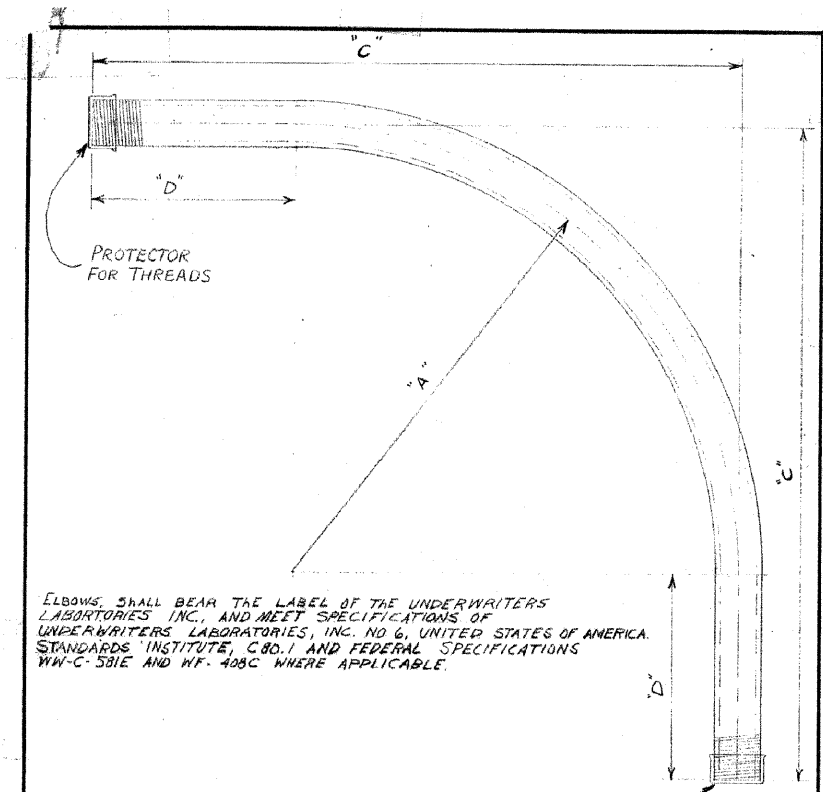
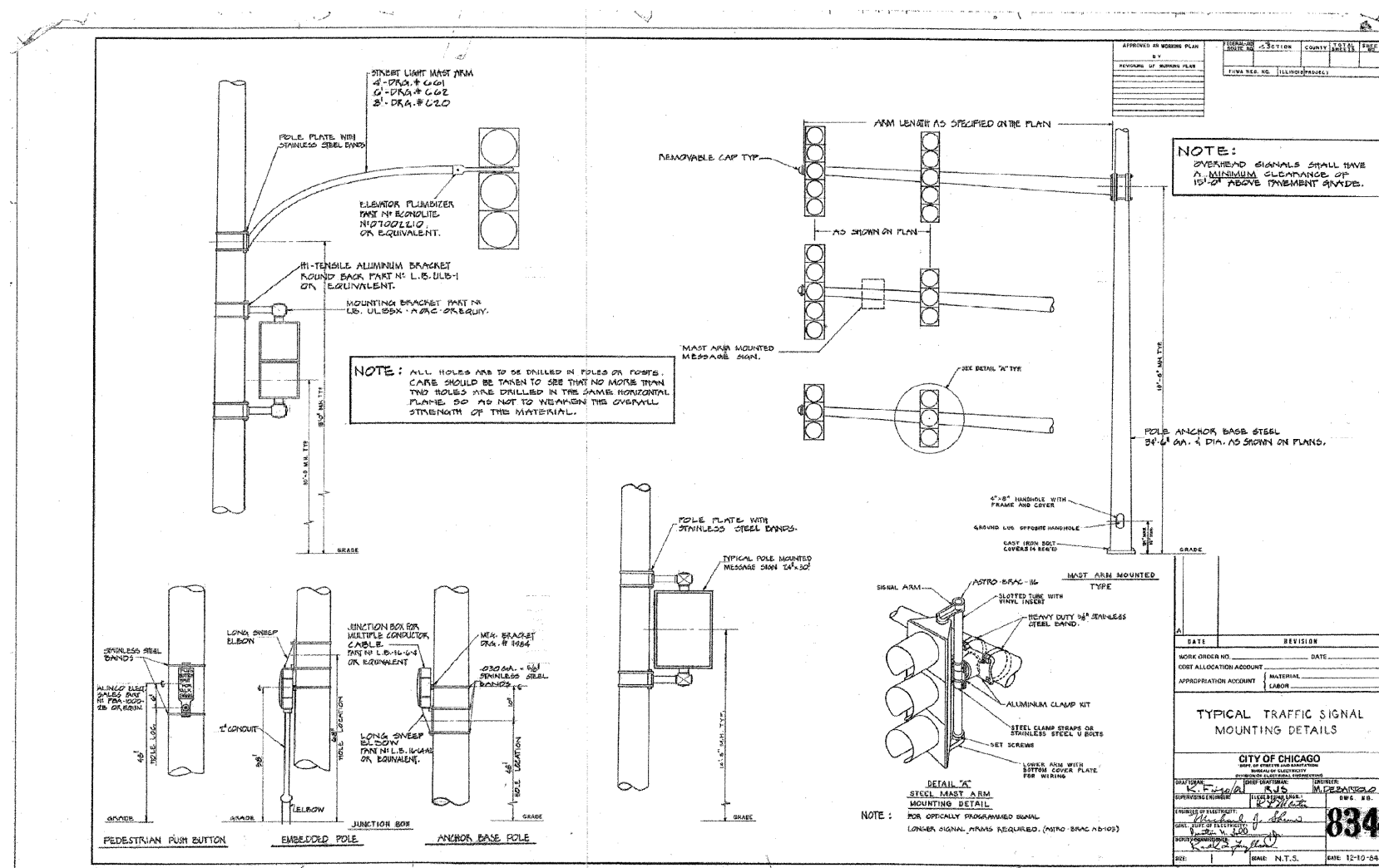


F.A.I. RTE.	SECTION	COUNTY	TOTAL SHEETS	SHEET NO.
57	1919.2B	COOK	119	65
STA.	TO STA.			
FED. ROAD DIST. NO.	ILLINOIS	FED. AID PROJECT		

CONTRACT #60371



NOTE:
TWO THREAD PROTECTORS TO BE FURNISHED ON EACH ELBOW, PROTECTOR TO COVER A MINIMUM OF TEN THREADS.

REAM BOTH ENDS TO REMOVE BURRS

APPROVED AS WORKING PLAN	SECTION	COUNTY	SHEET
REVISIONS OF WORKING PLAN	NO.	NO.	NO.
DATE	DATE	DATE	DATE
WORK ORDER NO.	DATE	DATE	DATE
COST ALLOCATION ACCOUNT	LABOR	LABOR	LABOR
APPROPRIATION ACCOUNT	LABOR	LABOR	LABOR

TYPICAL TRAFFIC SIGNAL MOUNTING DETAILS

CITY OF CHICAGO

834

DATE 12-10-06

TABLE OF DIMENSIONS

CONDUIT SIZE	A"	C"	D"	COMMODITY CODE
1 1/4"	24"	35"	11"	09-4001-0510
1 1/2"	24"	35"	11"	09-4001-0520
2"	24"	35"	11"	09-4001-4126
2 1/2"	24"	35"	11"	09-4001-4128
3"	24"	35"	11"	09-4001-4230
4"	24"	35"	11"	09-4001-0000

B SPECIFICATIONS REVISED

A REVISED DIMENSIONS ON 3" & 4" CONDUIT L.P.

ELBOW, CONDUIT, RIGID GALVANIZED STEEL, LARGE RADIUS

REVISED	CITY OF CHICAGO	
A 7-22-71	DEPT. OF STREETS AND SANITATION	
B 7-3-73	BUREAU OF ELECTRICITY	
C	DIVISION OF ELECTRICAL ENGINEERING	
D	DRAWN BY: LON BURD	CHECKED BY: M.S.
E	DESIGNED BY: M. SHINE	ENGINEER: M. SHINE
F	11825	
G	DATE: 6-2-71	

SIZE 8 1/2" X 11" SCALE: 3/16" DATE: 6-2-71

CITY OF CHICAGO BUREAU OF ELECTRICITY STANDARD DRAWINGS ARE PROVIDED IN ENGLISH UNITS.

SINGH SINGH & ASSOCIATES, INC. CONSULTING ENGINEERS

REVISIONS		ILLINOIS DEPARTMENT OF TRANSPORTATION
NAME	DATE	
		115TH STREET OVER I-57 CITY OF CHICAGO BUREAU OF ELECTRICITY STANDARD DRAWINGS

SCALE: NONE DRAWN BY: VG
DATE: 01-16-09 CHECKED BY: PV