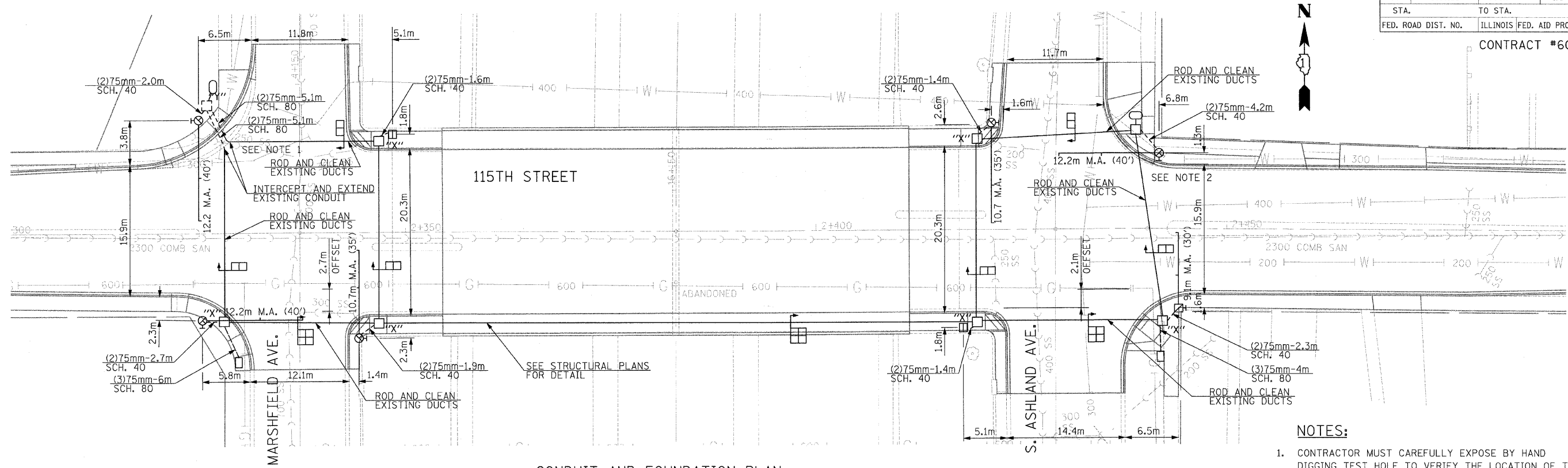
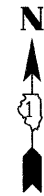


F.A.I. RTE.	SECTION	COUNTY	TOTAL SHEETS	SHEET NO.
57	1919.2B	COOK	119	43
STA.	TO STA.			
FED. ROAD DIST. NO.	ILLINOIS FED. AID PROJECT			

CONTRACT #60371



CONDUIT AND FOUNDATION PLAN

SCALE: 1:250

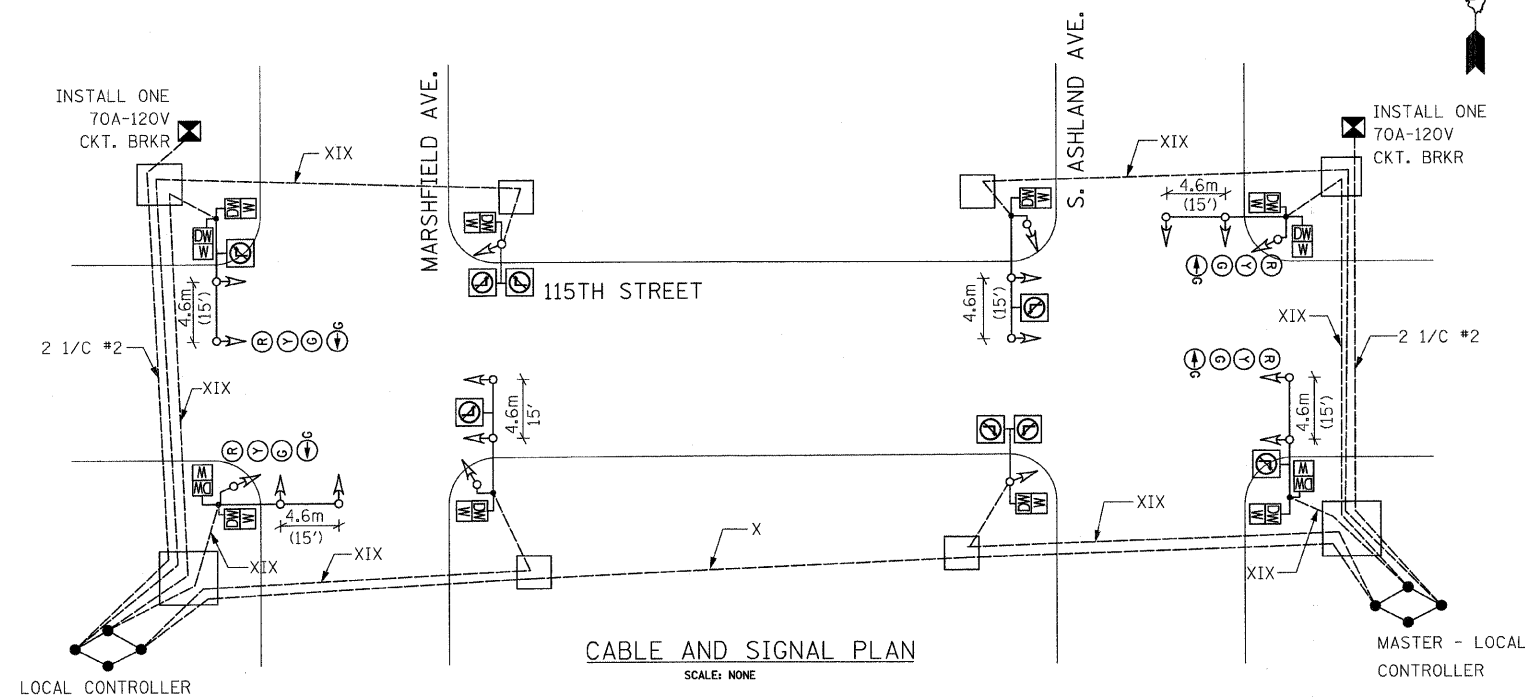


NOTES:

- CONTRACTOR MUST CAREFULLY EXPOSE BY HAND DIGGING TEST HOLE TO VERIFY THE LOCATION OF THE EXISTING WATER MAIN BEFORE BREAKING DOWN AND REMOVING MANHOLE. CONTRACTOR MUST PROTECT EXISTING WATER MAIN DURING ALL CONSTRUCTION ACTIVITIES.
- CONTRACTOR MUST CAREFULLY EXPOSE BY HAND DIGGING TEST HOLE TO VERIFY THE LOCATION OF THE EXISTING WATER MAIN BEFORE REMOVING EXISTING FOUNDATION AND EXCAVATING FOR PROPOSED FOUNDATION. IN NO CASE SHALL THE PROPOSED POLE FOUNDATION BE CLOSER THAN 460MM (OR EIGHTEEN INCHES) FROM THE EXTERIOR OF THE EXISTING WATER MAIN. CONTRACTOR MUST PROTECT EXISTING WATER MAIN DURING ALL CONSTRUCTION ACTIVITIES.

CONSTRUCTION NOTES:

- ALL FOUNDATIONS IN CONCRETE SIDE WALK TO BE PER DRAWING NO. 837.
- SEE DRAWING NO. 826 FOR TRAFFIC SIGNAL STANDARD CODES.
- ALL SIGNAL SECTION TO BE STANDARD 0.3m (12") SIZE
- ALL VEHICULAR SIGNAL TO BE 3 SECTION UNITS EXCEPT WHERE NOTED AND ALL PEDESTRIAN SIGNALS TO BE 1 SECTION UNITS WITH I.T.E. SYMBOLIC LENSES
- PEDESTRIAN SIGNALS TO BE INSTALLED BELOW VEHICULAR SIGNAL WHERE APPLICABLE
- FOREMAN TO SAW CUT A CLEAN JOINT BETWEEN CONCRETE SIDEWALK TO BE REMOVED AND THAT TO REMAIN IN PLACE.
- ROD AND CLEAN EXISTING CONDUITS WHEN REUSED.
- UNLESS OTHERWISE NOTED, ALL CONDUITS ARE POLYVINYLCHLORIDE (PVC)
- ALL DIMENSIONS ARE FROM FRONT FACE OF CURB UNLESS OTHERWISE INDICATED.
- FOREMAN TO CONTACT ALL UTILITIES PRIOR TO EXCAVATION FOR EXACT LOCATION OF THEIR UNDERGROUND FACILITIES.
- "X" - ADJUST FRAME AND LID
- "Y" - INSTALL 900mm x 1200mm x 1200mm (3' x 4' x 4') MANHOLE WITH 600mm (24") FRAME AND LID



CABLE AND SIGNAL PLAN

SCALE: NONE

SINGH SINGH & ASSOCIATES, INC. CONSULTING ENGINEERS

A	DATE	REVISION
SUPERSEDES DWG. #		
WORK ORDER NO. _____		DATE _____
COST ALLOCATION ACCOUNT _____		
APPROPRIATION ACCOUNT _____		MATERIAL _____
		LABOR _____
<p>TRAFFIC CONTROL SIGNAL 115TH ST. AT S. ASHLAND AVE. AND AT MARSHFIELD AVE.</p>		
<p>CITY OF CHICAGO DEPT. OF STREETS AND SANITATION BUREAU OF ELECTRICAL ENGINEERING</p>		
DRAFTSMAN:	CHIEF DRAFTSMAN:	ENGINEER:
SUPERVISING ENGINEER:	ELEC. DESIGN ENGR.	
ENGINEER OF ELECTRICITY:		DWG. NO.
GEN'L SUPT. OF ELECTRICITY:		22208
DEPUTY COMMISSIONER:		
SIZE:	SCALE: AS NOTED	DATE: 01-16-09