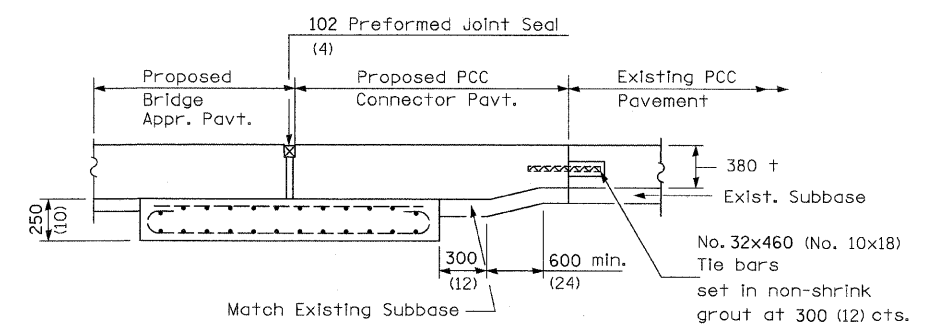
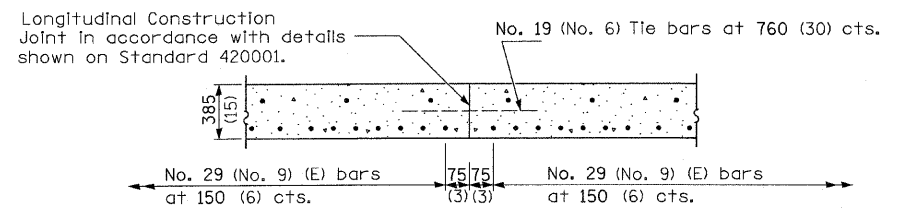
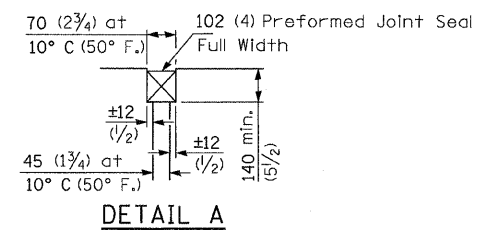
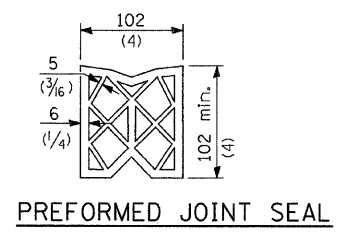
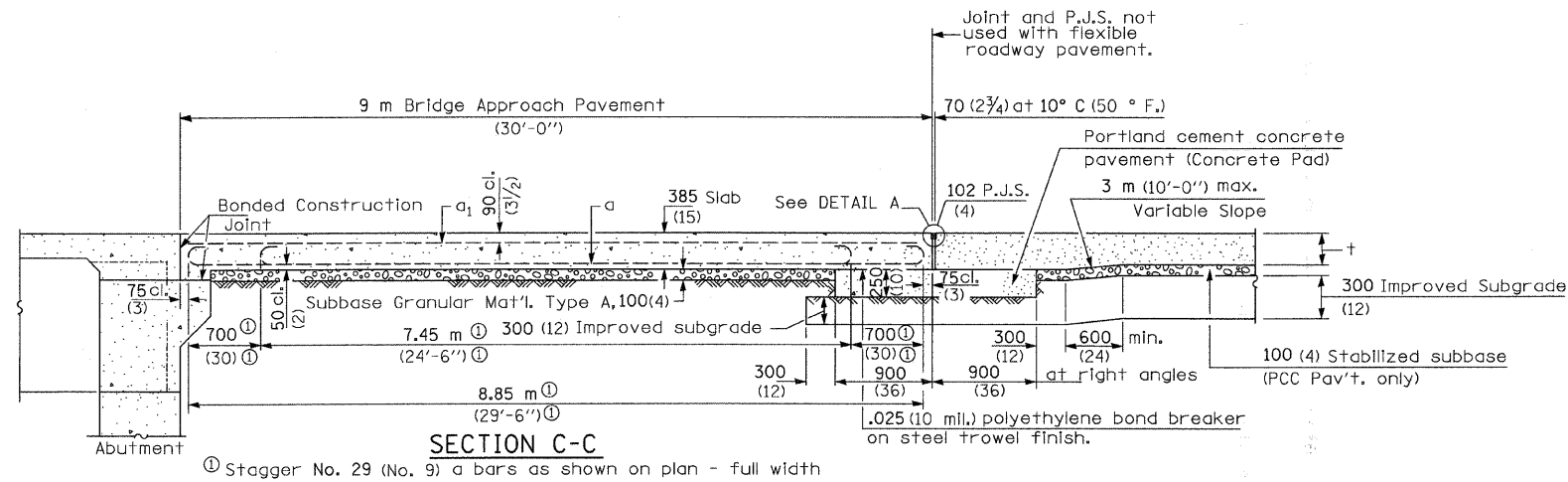
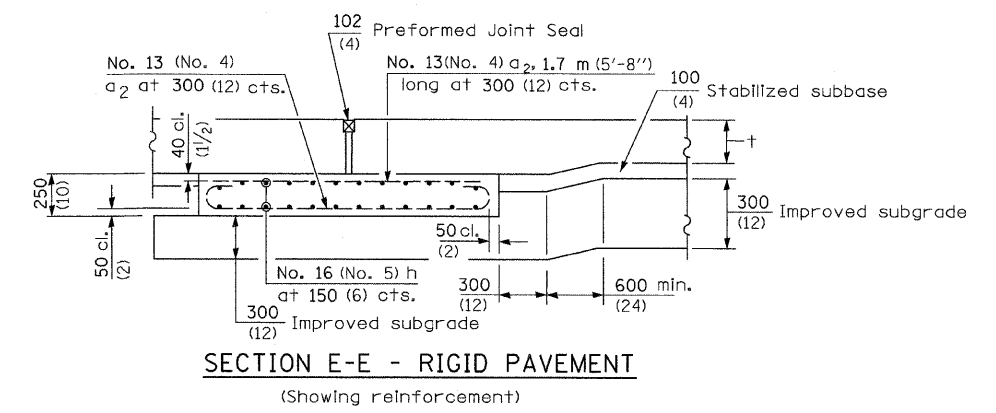
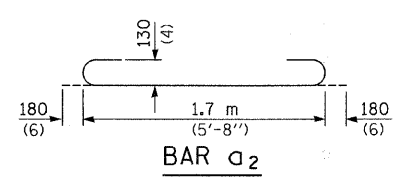
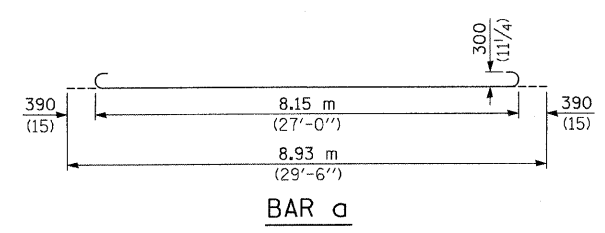


F.A.I.	SECTION	COUNTY	TOTAL SHEETS	SHEET NO.
57	1919.2B	COOK	119	41
FED. ROAD DIST. NO.		ILLINOIS FED. AID PROJECT		CONTRACT 60371



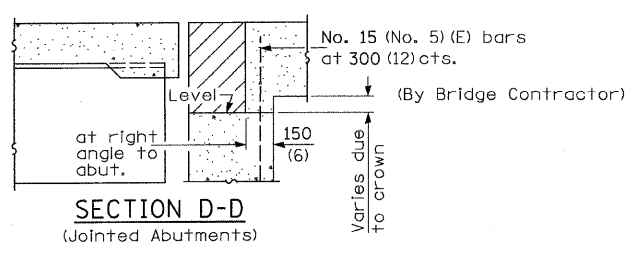
STAGE CONSTRUCTION JOINT AND OPTIONAL LONGITUDINAL CONSTRUCTION JOINT

As approved by the Engineer, the Contractor may elect to reduce the widths of pour by use of the Optional Longitudinal Construction Joint shown. Joints shall be located at the edge of a traffic lane.



DESIGN STRESSES
 $f_y = 400 \text{ MPa (60,000 p.s.i.)}$
 $f'_c = 24 \text{ MPa (3,500 p.s.i.)}$

NOTES:
 See standard 420001 for joint details not shown.
 All dimensions are in millimeters (Inches) unless otherwise noted.



REVISIONS		ILLINOIS DEPARTMENT OF TRANSPORTATION
NAME	DATE	
		BRIDGE APPROACH PAVEMENT DETAILS II 115th STREET DRAWN BY: PRRH CHECKED BY: JMH DATE: DATE: AUG 6 2009

COLLINS ENGINEERS
 123 North Wacker Drive
 Suite 300
 Chicago, IL 60606
 (312) 704-9300
 www.collinseng.com
 ILLINOIS PROFESSIONAL DESIGN FIRM LICENSE NO. 184-000993

FILE: g:\2904\civil\exhibit\2904039.dgn
 DATE: 28-Aug-08 14:24