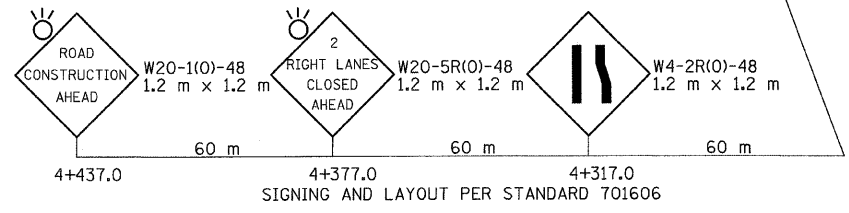


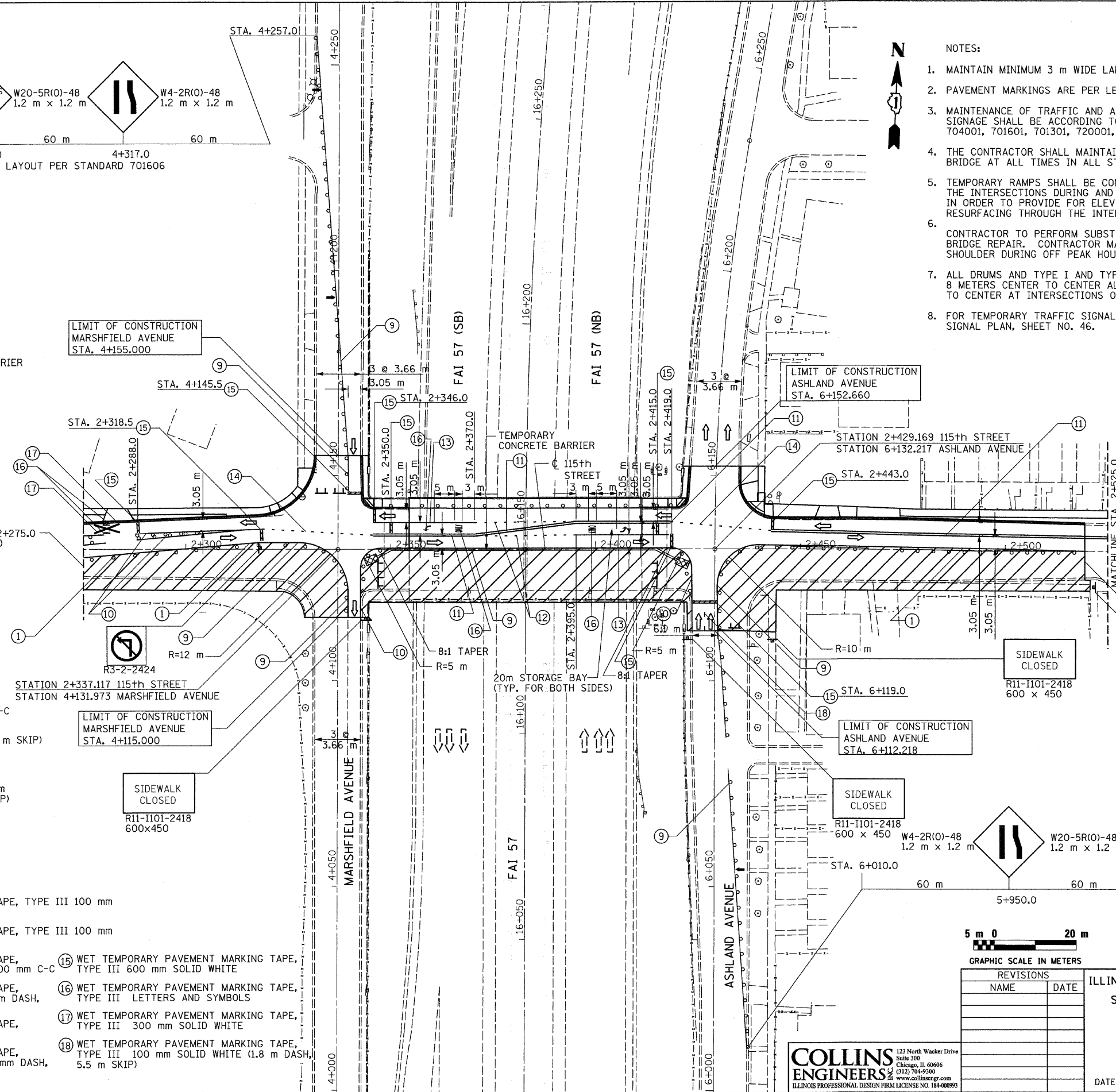
F.A.I.	SECTION	COUNTY	TOTAL SHEET
57	1919.2B	COOK	119
FED. ROAD DIST. NO.	ILLINOIS	FED. AID PROJECT	CONTRACT 60371



- LEGEND**
- ↑ ARROW BOARD
 - DRUM, TYPE I, OR TYPE II BARRICADE
 - ⌌ TYPE III BARRICADE (NUMBER REQUIRED AS DIRECTED BY ENGINEER FOR PROPER CLOSURE)
 - ⌌ SIGN ON PORTABLE OR PERMANENT SUPPORT
 - ▬ TEMPORARY CONCRETE BARRIER
 - ▨ WORK ZONE
 - ⊠ IMPACT ATTENUATOR SEE STANDARD 701321

- NOTES:**
1. MAINTAIN MINIMUM 3 m WIDE LANES.
 2. PAVEMENT MARKINGS ARE PER LEGEND.
 3. MAINTENANCE OF TRAFFIC AND ASSOCIATED TRAFFIC CONTROL DEVICES AND SIGNAGE SHALL BE ACCORDING TO STANDARDS 701321, 702001, 701606, 704001, 701601, 701301, 720001, 720006, 720011, 720016, 780001.
 4. THE CONTRACTOR SHALL MAINTAIN ACCESS TO ONE SIDEWALK ACROSS THE BRIDGE AT ALL TIMES IN ALL STAGES. SEE STANDARD 701801.
 5. TEMPORARY RAMPS SHALL BE CONSTRUCTED DURING OFF PEAK HOURS WITHIN THE INTERSECTIONS DURING AND AFTER STAGE II-A AND II-B CONSTRUCTION IN ORDER TO PROVIDE FOR ELEVATION ADJUSTMENTS DUE TO PAVEMENT RESURFACING THROUGH THE INTERSECTION.
 6. CONTRACTOR TO PERFORM SUBSTRUCTURE WORK DURING STAGE I OR II BRIDGE REPAIR. CONTRACTOR MAY CLOSE THE LANE ADJACENT TO THE SHOULDER DURING OFF PEAK HOURS, AS REQUIRED.
 7. ALL DRUMS AND TYPE I AND TYPE II BARRICADES SHALL BE SPACED AT 8 METERS CENTER TO CENTER ALONG ROADWAY AND 4 METERS CENTER TO CENTER AT INTERSECTIONS OR AS DIRECTED BY THE ENGINEER.
 8. FOR TEMPORARY TRAFFIC SIGNAL INFORMATION SEE TEMPORARY TRAFFIC SIGNAL PLAN, SHEET NO. 46.

- PAVEMENT MARKING LEGEND**
1. TEMPORARY PAVEMENT MARKING, 100 mm SOLID WHITE
 2. TEMPORARY PAVEMENT MARKING, 100 mm DOUBLE YELLOW AT 200 mm C-C
 3. TEMPORARY PAVEMENT MARKING, 100 mm SOLID WHITE (1.8 m DASH, 5.5 m SKIP)
 4. TEMPORARY PAVEMENT MARKING, 600 mm SOLID WHITE
 5. TEMPORARY PAVEMENT MARKING, 100 mm SOLID WHITE (600 mm DASH, 1.8 m SKIP)
 6. TEMPORARY PAVEMENT MARKING, 100 mm SOLID YELLOW
 7. TEMPORARY PAVEMENT MARKING, 400 mm SOLID WHITE
 8. TEMPORARY PAVEMENT MARKING-LETTERS AND SYMBOLS
 9. WET TEMPORARY PAVEMENT MARKING TAPE, TYPE III 100 mm SOLID WHITE
 10. WET TEMPORARY PAVEMENT MARKING TAPE, TYPE III 100 mm SOLID YELLOW
 11. WET TEMPORARY PAVEMENT MARKING TAPE, TYPE III 100 mm DOUBLE YELLOW @ 200 mm C-C
 12. WET TEMPORARY PAVEMENT MARKING TAPE, TYPE III 150 mm SOLID WHITE (600 mm DASH, 1.8 m SKIP)
 13. WET TEMPORARY PAVEMENT MARKING TAPE, TYPE III 150 mm SOLID WHITE
 14. WET TEMPORARY PAVEMENT MARKING TAPE, TYPE III 100 mm SOLID YELLOW (600 mm DASH, 1.8 m SKIP)
 15. WET TEMPORARY PAVEMENT MARKING TAPE, TYPE III 600 mm SOLID WHITE
 16. WET TEMPORARY PAVEMENT MARKING TAPE, TYPE III LETTERS AND SYMBOLS
 17. WET TEMPORARY PAVEMENT MARKING TAPE, TYPE III 300 mm SOLID WHITE
 18. WET TEMPORARY PAVEMENT MARKING TAPE, TYPE III 100 mm SOLID WHITE (1.8 m DASH, 5.5 m SKIP)



COLLINS ENGINEERS
 123 North Wacker Drive
 Suite 300
 Chicago, IL 60606
 (312) 704-9300
 www.collinsengr.com
 ILLINOIS PROFESSIONAL DESIGN FIRM LICENSE NO. 184-000993



REVISIONS	
NAME	DATE

ILLINOIS DEPARTMENT OF TRANSPORTATION
 SUGGESTED STAGES OF CONSTRUCTION AND TRAFFIC CONTROL
 STAGE II-B
 115th STREET
 DRAWN BY: PRH
 CHECKED BY: JMH
 DATE: JANUARY 16, 2009

FILE: g:\2904\civil\exhibit\2904023.dgn
 DATE: 13-Jan-09 14:24