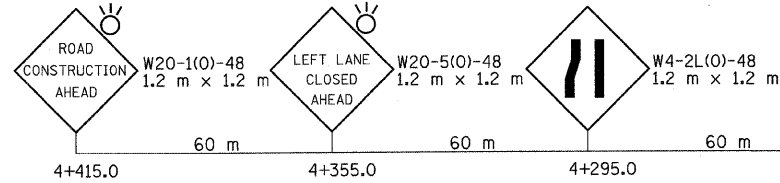


F.A.I.	SECTION	COUNTY	TOTAL SHEETS	SHEET NO.
57	1919.2B	COOK	119	25
FED. ROAD DIST. NO.		ILLINOIS FED. AID PROJECT	CONTRACT 60371	



LEGEND

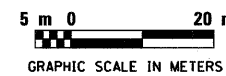
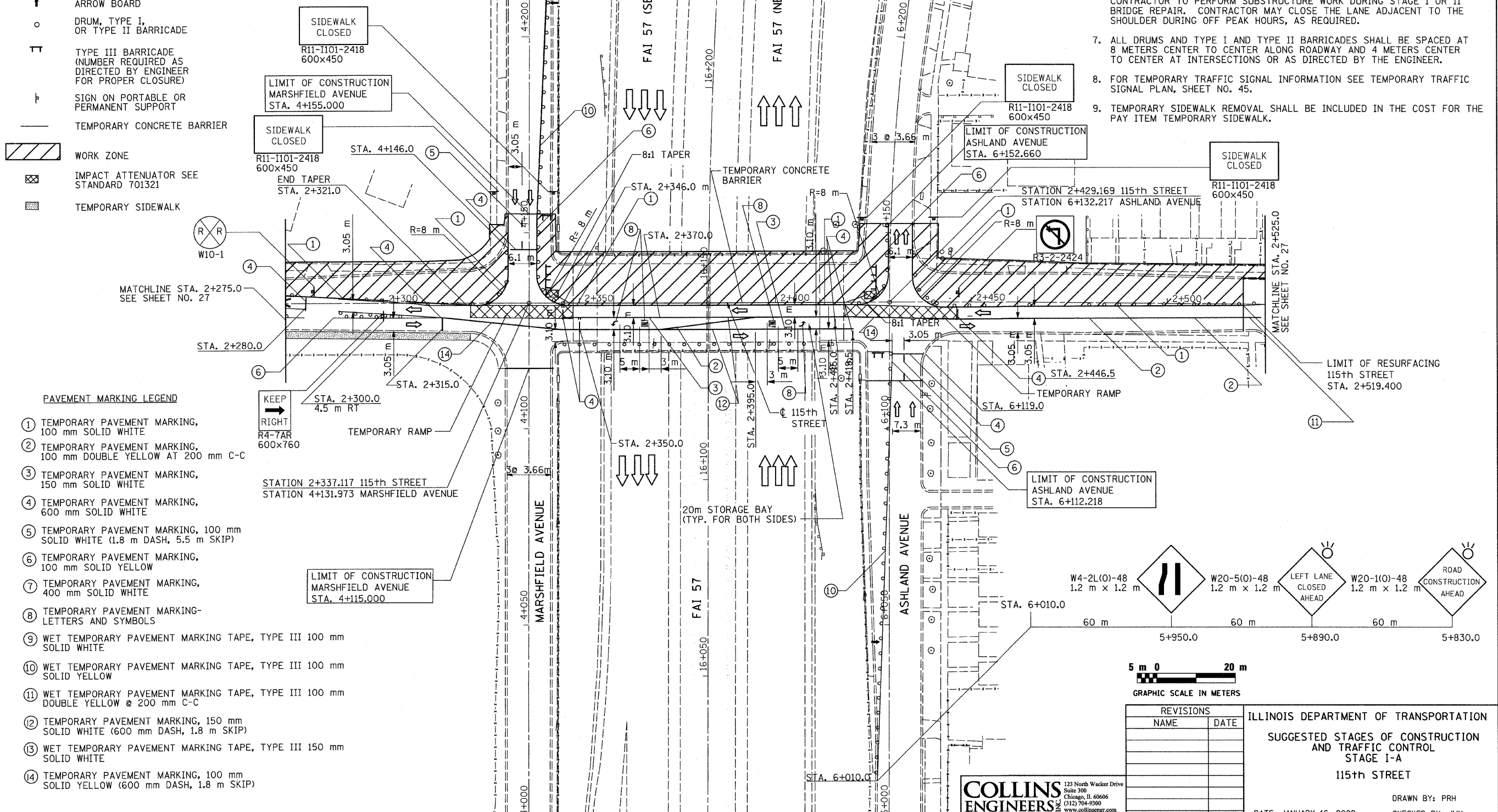
- ↑ ARROW BOARD
- DRUM, TYPE I, OR TYPE II BARRICADE
- ⊥ TYPE III BARRICADE (NUMBER REQUIRED AS DIRECTED BY ENGINEER FOR PROPER CLOSURE)
- ⊥ SIGN ON PORTABLE OR PERMANENT SUPPORT
- TEMPORARY CONCRETE BARRIER
- ▨ WORK ZONE
- ⊠ IMPACT ATTENUATOR SEE STANDARD 701321
- ▤ TEMPORARY SIDEWALK

PAVEMENT MARKING LEGEND

- ① TEMPORARY PAVEMENT MARKING, 100 mm SOLID WHITE
- ② TEMPORARY PAVEMENT MARKING, 100 mm DOUBLE YELLOW AT 200 mm C-C
- ③ TEMPORARY PAVEMENT MARKING, 150 mm SOLID WHITE
- ④ TEMPORARY PAVEMENT MARKING, 600 mm SOLID WHITE
- ⑤ TEMPORARY PAVEMENT MARKING, 100 mm SOLID WHITE (1.8 m DASH, 5.5 m SKIP)
- ⑥ TEMPORARY PAVEMENT MARKING, 100 mm SOLID YELLOW
- ⑦ TEMPORARY PAVEMENT MARKING, 400 mm SOLID WHITE
- ⑧ TEMPORARY PAVEMENT MARKING-LETTERS AND SYMBOLS
- ⑨ WET TEMPORARY PAVEMENT MARKING TAPE, TYPE III 100 mm SOLID WHITE
- ⑩ WET TEMPORARY PAVEMENT MARKING TAPE, TYPE III 100 mm SOLID YELLOW
- ⑪ WET TEMPORARY PAVEMENT MARKING TAPE, TYPE III 100 mm DOUBLE YELLOW @ 200 mm C-C
- ⑫ TEMPORARY PAVEMENT MARKING, 150 mm SOLID WHITE (600 mm DASH, 1.8 m SKIP)
- ⑬ WET TEMPORARY PAVEMENT MARKING TAPE, TYPE III 150 mm SOLID WHITE
- ⑭ TEMPORARY PAVEMENT MARKING, 100 mm SOLID YELLOW (600 mm DASH, 1.8 m SKIP)

NOTES:

1. MAINTAIN MINIMUM 3 m WIDE LANES.
2. PAVEMENT MARKINGS ARE PER LEGEND.
3. MAINTENANCE OF TRAFFIC AND ASSOCIATED TRAFFIC CONTROL DEVICES AND SIGNAGE SHALL BE ACCORDING TO STANDARDS 701321, 702001, 701606, 704001, 701601, 701301, 720001, 720006, 720011, 720016, 780001.
4. THE CONTRACTOR SHALL MAINTAIN ACCESS TO ONE SIDEWALK ACROSS THE BRIDGE AT ALL TIMES IN ALL STAGES. SEE STANDARD 701801.
5. TEMPORARY RAMP SHALL BE CONSTRUCTED DURING OFF PEAK HOURS WITHIN THE INTERSECTIONS DURING AND AFTER STAGE I-A AND I-B CONSTRUCTION IN ORDER TO PROVIDE FOR ELEVATION ADJUSTMENTS DUE TO PAVEMENT RESURFACING THROUGH THE INTERSECTION.
6. CONTRACTOR TO PERFORM SUBSTRUCTURE WORK DURING STAGE I OR II BRIDGE REPAIR. CONTRACTOR MAY CLOSE THE LANE ADJACENT TO THE SHOULDER DURING OFF PEAK HOURS, AS REQUIRED.
7. ALL DRUMS AND TYPE I AND TYPE II BARRICADES SHALL BE SPACED AT 8 METERS CENTER TO CENTER ALONG ROADWAY AND 4 METERS CENTER TO CENTER AT INTERSECTIONS OR AS DIRECTED BY THE ENGINEER.
8. FOR TEMPORARY TRAFFIC SIGNAL INFORMATION SEE TEMPORARY TRAFFIC SIGNAL PLAN, SHEET NO. 45.
9. TEMPORARY SIDEWALK REMOVAL SHALL BE INCLUDED IN THE COST FOR THE PAY ITEM TEMPORARY SIDEWALK.



REVISIONS	
NAME	DATE

ILLINOIS DEPARTMENT OF TRANSPORTATION  
 SUGGESTED STAGES OF CONSTRUCTION  
 AND TRAFFIC CONTROL  
 STAGE I-A  
 115th STREET  
 DRAWN BY: PRH  
 CHECKED BY: JMH  
 DATE: JANUARY 16, 2009

**COLLINS ENGINEERS**  
 123 North Wacker Drive  
 Suite 300  
 Chicago, IL 60606  
 (312) 704-9300  
 www.collinsengr.com  
 ILLINOIS PROFESSIONAL DESIGN FIRM LICENSE NO. 184-000993