

STATE OF ILLINOIS
DEPARTMENT OF TRANSPORTATION
DIVISION OF HIGHWAYS

**PROPOSED
HIGHWAY PLANS**

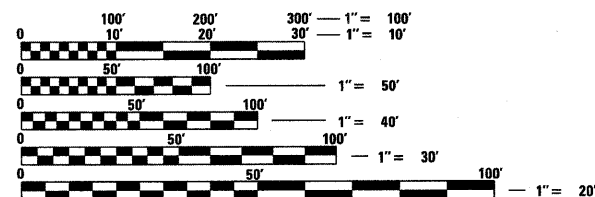
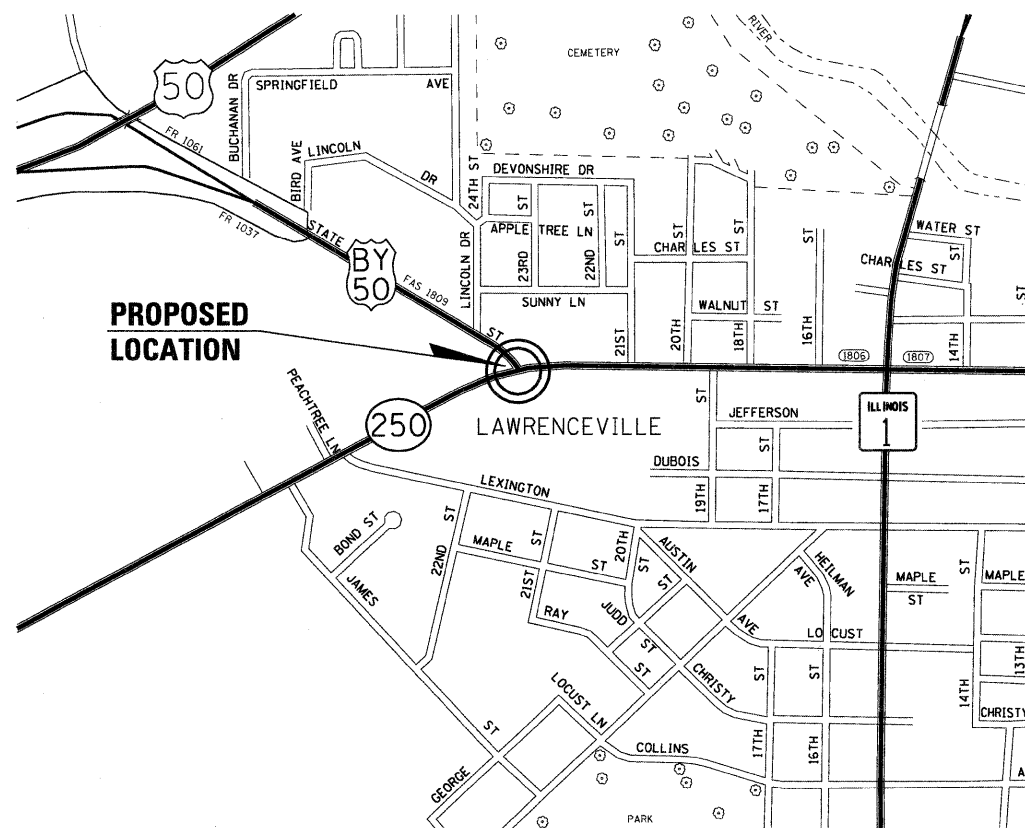
FAS ROUTE 1809 (U.S. BUS. ROUTE 50)
SECTION (2Z)TS-1

TRAFFIC SIGNALS INSTALLATION
LAWRENCE COUNTY

C-97-129-10

F.A.S. RTE.	SECTION	COUNTY	TOTAL SHEETS	SHEET NO.
1809	(2Z)TS-1	LAWRENCE	12	1
		ILLINOIS	CONTRACT NO. 74480	

FOR INDEX OF SHEETS, SEE SHEET NO. 2



FULL SIZE PLANS HAVE BEEN PREPARED USING STANDARD ENGINEERING SCALES. REDUCED SIZED PLANS WILL NOT CONFORM TO STANDARD SCALES. IN MAKING MEASUREMENTS ON REDUCED PLANS, THE ABOVE SCALES MAY BE USED.

J.U.L.I.E.
JOINT UTILITY LOCATION INFORMATION FOR EXCAVATION
1-800-892-0123
OR 811

PROJECT ENGINEER ROB MACKLIN
PROJECT MANAGER LYNN McCLELLAN

CONTRACT NO. 74480

STATE OF ILLINOIS
DEPARTMENT OF TRANSPORTATION
DIVISION OF HIGHWAYS

SUBMITTED Dec. 28 2010
Roger J. Dunkel
DEPUTY DIRECTOR OF HIGHWAYS, REGION ENGINEER

February 4 2011
Scott E. Stitt, P.E.
ENGINEER OF DESIGN AND ENVIRONMENT

February 4 2011
Christine M. Reed
DIRECTOR OF HIGHWAYS, CHIEF ENGINEER

PRINTED BY THE AUTHORITY
OF THE STATE OF ILLINOIS