

F.A.S. RTE.	SECTION	COUNTY	TOTAL SHEETS	SHEET NO.
1619	(C)1-1	SANGAMON	10	1
		ILLINOIS	CONTRACT NO. 72E30	

**INDEX OF SHEETS**

- 1 COVER SHEET
- 2 GENERAL NOTES/COMMITMENTS
- 3 SUMMARY OF QUANTITIES
- 4-5 TYPICAL SECTIONS
- 6 SCHEDULE OF QUANTITIES
- 7 ALIGNMENT SHEET
- 8-9 SHOULDER STABILIZATION PLAN
- 10 DETAIL OF BRICK PAVEMENT REMOVAL AND REPLACEMENT  
DETAIL OF CURB REMOVAL AND REPLACEMENT

**LIST OF STANDARDS**

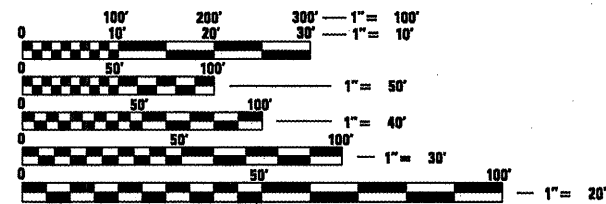
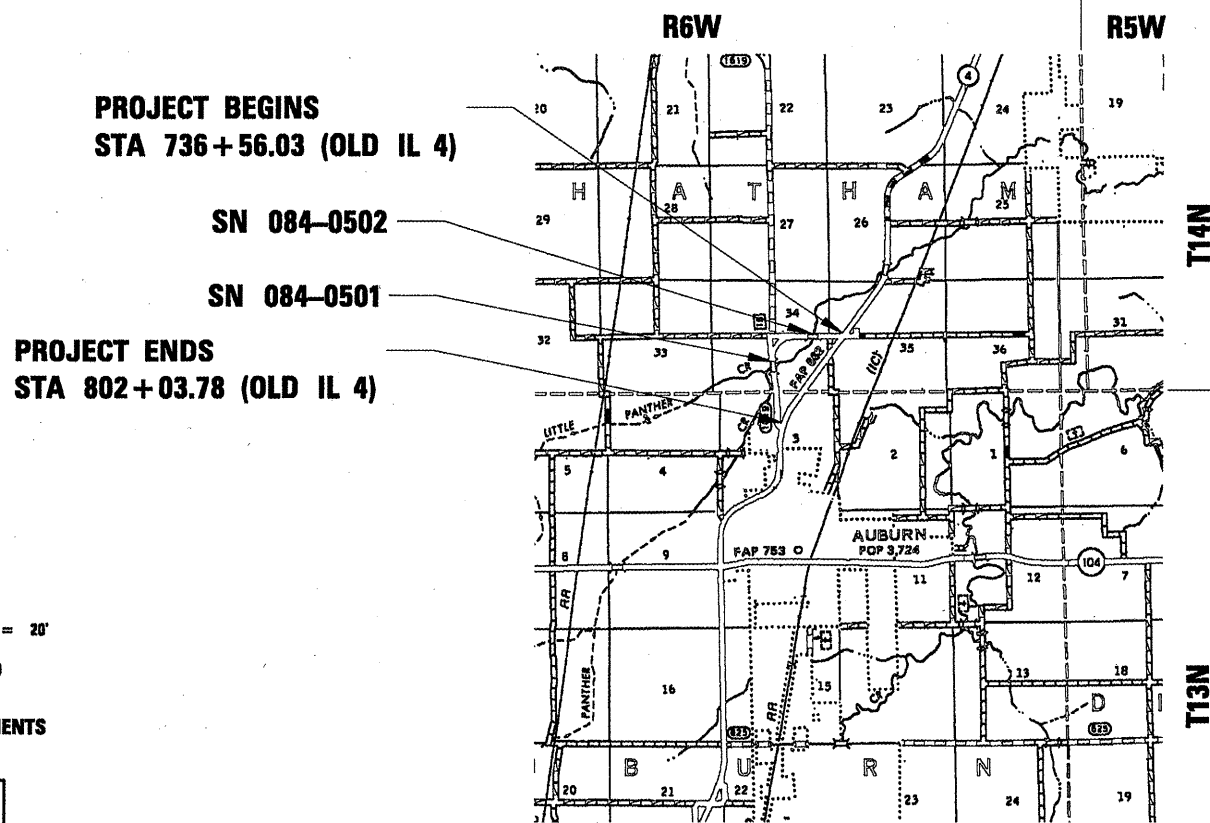
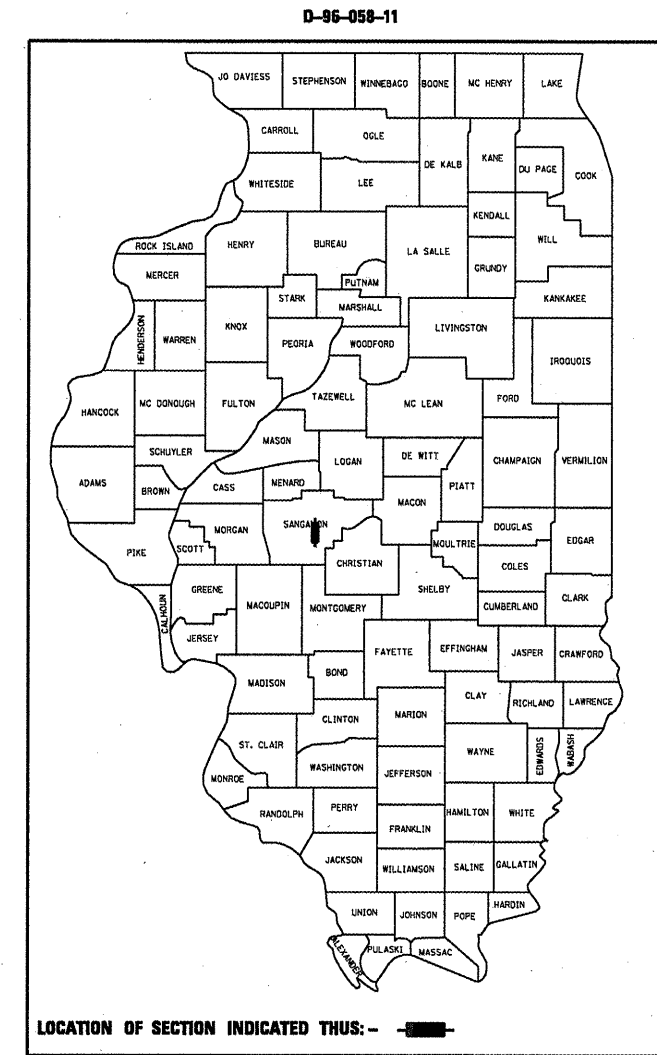
SHEET NO.	NAME OF STANDARDS
BLR 21-8	TYPICAL APPLICATION OF TRAFFIC CONTROL DEVICES FOR CONSTRUCTION ON RURAL LOCAL HIGHWAYS
BLR 22-6	TYP. APPL. OF T.C.D. FOR RURAL LOC. HWYS. (2-LANE 2 WAY RURAL TRAFF.) (RD. CLOSED TO THRU TRAFF.)
701901-01	TRAFFIC CONTROL DEVICES
701201-04	LANE CLOSURE, 2L, 2W, DAY ONLY, FOR SPEEDS > 45 MPH

**STATE OF ILLINOIS**  
**DEPARTMENT OF TRANSPORTATION**  
**DIVISION OF HIGHWAYS**  
**PROPOSED**  
**HIGHWAY PLANS**

**FAS ROUTE 1619 (OLD IL 4)**  
**SECTION (C)1-1**

**BRICK PAVEMENT PATCHING**  
**SANGAMON COUNTY**

C-96-058-11



FULL SIZE PLANS HAVE BEEN PREPARED USING STANDARD ENGINEERING SCALES. REDUCED SIZED PLANS WILL NOT CONFORM TO STANDARD SCALES. IN MAKING MEASUREMENTS ON REDUCED PLANS, THE ABOVE SCALES MAY BE USED.

J.U.L.I.E.  
JOINT UTILITY LOCATION INFORMATION FOR EXCAVATION  
1-800-892-0123  
OR 811

ADT = 1000 (2007)  
PV = 834 (83.4%)  
SU = 133 (13.3%)  
MU = 33 (3.3%)

STATE OF ILLINOIS  
DEPARTMENT OF TRANSPORTATION  
DIVISION OF HIGHWAYS

SUBMITTED February 17, 2011  
Rega Z. Dmicki  
DEPUTY DIRECTOR OF HIGHWAYS, REGION ENGINEER

March 4, 2011  
Scott E. Still, P.E.  
ENGINEER OF DESIGN AND ENVIRONMENT

March 4, 2011  
Christine M. Reed  
DIRECTOR OF HIGHWAYS, CHIEF ENGINEER

PROJECT ENGINEER: JOHN NEGANGARD 217-782-6990  
PROJECT MANAGER: JAY EDWARDS 217-785-5321

GROSS LENGTH = 6547.75 FT. = 1.240 MILE  
NET LENGTH = 6547.75 FT. = 1.240 MILE

**PRINTED BY THE AUTHORITY**  
**OF THE STATE OF ILLINOIS**

CONTRACT NO. 72E30

**GENERAL NOTES**

- 1 ALL ELEVATIONS SHOWN IN THE PLANS ARE U. S. G. S. MEAN SEA LEVEL DATUM.
- 2 ANY REFERENCE TO STANDARDS THROUGHOUT THE PLANS SHALL BE INTERPRETED TO BE THE LATEST STANDARDS OF THE DEPARTMENT AS SHOWN IN THE PLANS.
- 3 EXISTING PAVEMENT DAMAGED DUE TO THE CONTRACTOR'S OPERATIONS, AND NOT OTHER WISE NECESSARY TO REPLACE, SHALL BE REPLACED AT THE EXPENSE OF THE CONTRACTOR.
- 4 THE LOCATIONS OF THOSE BURIED AND ABOVE GROUND UTILITIES SHOWN ARE APPROXIMATE. THE CONTRACTOR SHALL BE RESPONSIBLE FOR PROTECTING UTILITY PROPERTY FROM CONSTRUCTION OPERATIONS AS OUTLINED IN ARTICLE 107.26 OF THE STANDARD SPECIFICATIONS. THE J.U.L.I.E. NUMBER IS 800-892-0123. A MINIMUM OF FORTY-EIGHT HOURS ADVANCED NOTICE IS REQUIRED.
- 5 THE EXISTING ROAD SIGNS THAT INTERFERE WITH CONSTRUCTION SHALL BE RELOCATED AS DIRECTED BY THE ENGINEER. AFTER THE CONSTRUCTION IS COMPLETED, THE CONTRACTOR WILL REPLACE THE SIGNS AS DIRECTED BY THE ENGINEER. THIS WORK WILL NOT BE PAID FOR SEPARATELY BUT SHALL BE CONSIDERED INCIDENTAL TO THE CONTRACT.
- 6 WHERE SECTION OR SUBSECTION MONUMENTS ARE ENCOUNTERED, THE ENGINEER SHALL BE NOTIFIED BEFORE SUCH MONUMENTS ARE REMOVED. THE CONTRACTOR SHALL PROTECT AND CAREFULLY PRESERVE ALL PROPERTY MARKERS AND MONUMENTS UNTIL THE OWNER AND AUTHORIZED SURVEYOR OR AGENT HAS WITNESSED OR OTHERWISE REFERENCED THEIR LOCATION. IF THE ENGINEER DECIDES TO HAVE THE CONTRACTOR RESET THE MONUMENT, THIS WORK WILL BE PAID FOR IN ACCORDANCE WITH ARTICLE 109.04.

**COMMITMENTS**

- THE FIELD/RESIDENT ENGINEER SHALL CONTACT STUDIES & PLANS CONCERNING ANY MAJOR PLAN CHANGES TO MAKE SURE NO PREVIOUS COMMITMENTS (NOT LISTED) WERE MADE AFFECTING THE DESIGN AND ALLOW AN IMPROVED DESIGN FOR FUTURE PROJECTS.

<b>DISTRICT SIX</b>	
EXAMINED <u>Feb 9</u> _____ 20 <u>11</u>	
<i>Chris Walker</i>	
OPERATIONS ENGINEER	

EXAMINED <u>FEB 15</u> _____ 20 <u>11</u>	
<i>Tommy Ford</i>	
PROJECT IMPLEMENTATION ENGINEER	

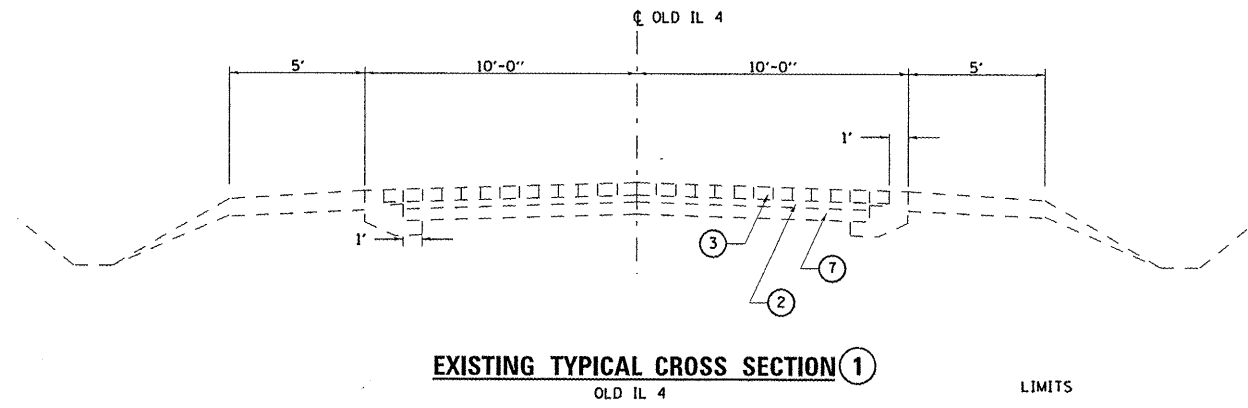
EXAMINED <u>FEBRUARY 17</u> _____ 20 <u>11</u>	
<i>John C. [Signature]</i>	
PROGRAM DEVELOPMENT ENGINEER	

FILE NAME =	USER NAME = baij	DESIGNED -	REVISED -	<b>STATE OF ILLINOIS DEPARTMENT OF TRANSPORTATION</b>	<b>GENERAL NOTES</b>	F.A.S. RTE.	SECTION	COUNTY	TOTAL SHEETS	SHEET NO.	
cr\pwwork\pwwdot\baij\d8258886\067E30-11r-gennote.dgn	11r-gennote.dgn	DRAWN -	REVISED -			1619	(C)-1	SANGAMON	10	2	
PLOT SCALE = 100.0000' / IN.		CHECKED -	REVISED -			CONTRACT NO. 72E30					
PLOT DATE = Feb-17-2011 10:38:50AM		DATE -	REVISED -			ILLINOIS FED. AID PROJECT					
						SCALE:	SHEET NO.	OF	SHEETS	STA. TO STA.	

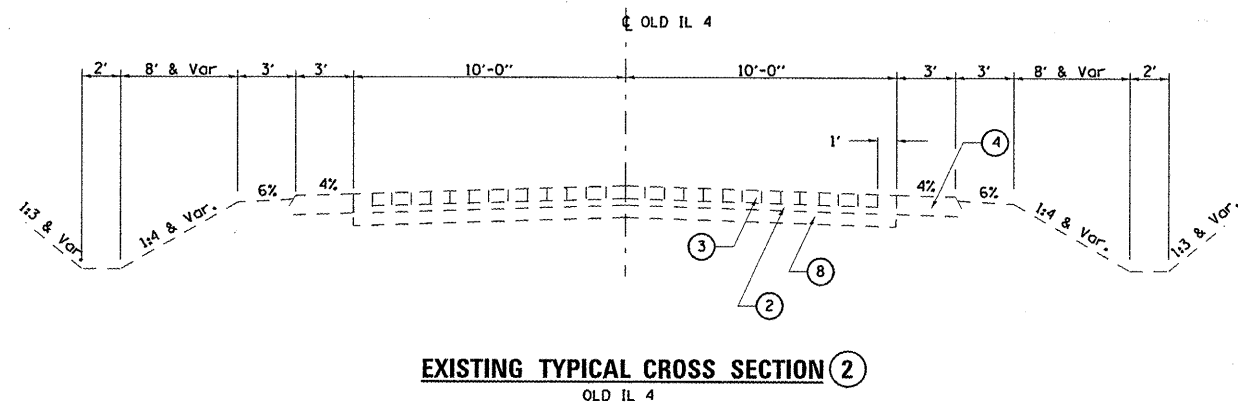
100% STATE  
 CONSTRUCTION  
 TYPE CODE  
 0005

Code No.	Item	Unit	Total	
67100100	MOBILIZATION	L SUM	1.0	1.0
70101830	TRAFFIC CONTROL AND PROTECTION, STANDARD BLR 21	L SUM	1.0	1.0
70101835	TRAFFIC CONTROL AND PROTECTION, STANDARD BLR 22	L SUM	1.0	1.0
<b>X4420700</b>	CLASS C PATCHES, TYPE I, 7 INCH (SPECIAL)	SQ YD	53.0	53.0
<b>X4420702</b>	CLASS C PATCHES, TYPE II, 7 INCH (SPECIAL)	SQ YD	175.0	175.0
<b>X4420704</b>	CLASS C PATCHES, TYPE III, 7 INCH (SPECIAL)	SQ YD	22.0	22.0
<b>X4420706</b>	CLASS C PATCHES, TYPE IV, 7 INCH (SPECIAL)	SQ YD	563.0	563.0
X0325225	BRICK PAVEMENT REMOVAL AND REPLACEMENT	SQ FT	28160.0	28160.0
* X0326223	FOAM, EXPANDING POLYURETHANE, HIGH-DENSITY	POUND	5600.0	5600.0
X0540000	BRICK PAVERS	SQ FT	7040.0	7040.0
X4400220	CURB REMOVAL AND REPLACEMENT	FOOT	3500.0	3500.0
<b>X0327207</b>	BRICK JOINT FILLER	SQ YD	13110.0	13110.0

\* SPECIALTY ITEMS



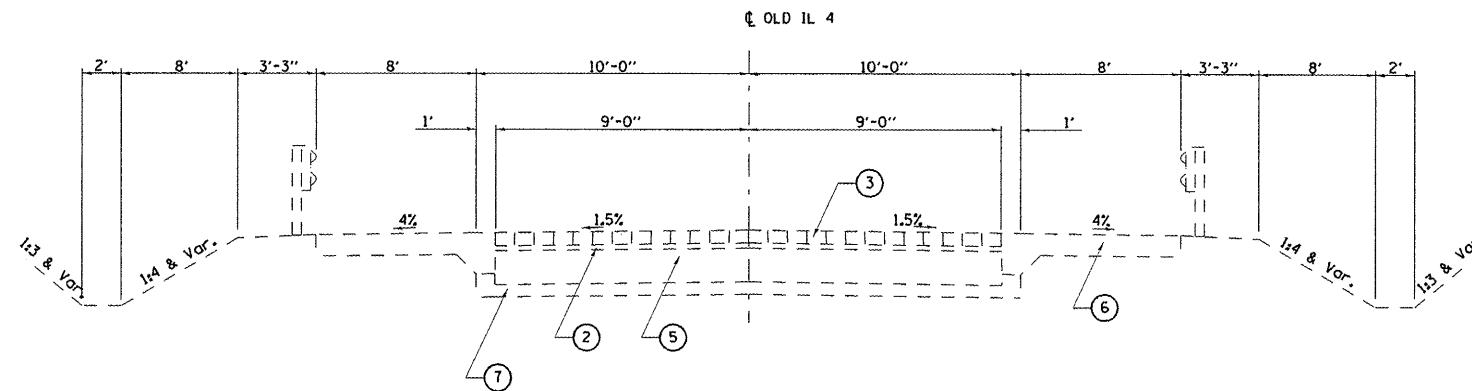
LIMITS  
 STA 736+56.03 TO STA 746+69.39  
 STA 747+81.59 TO STA 755+54.19  
 STA 771+72.06 TO STA 775+13.31  
 STA 779+07.00 TO STA 802+03.78



LIMITS  
 STA 755+54.19 TO STA 771+72.06

- LEGEND
- 1. EXISTING PCC BASE COURSE, 8"
  - 2. EXISTING MASTIC CUSHION
  - 3. EXISTING BRICK PAVEMENT
  - 4. EXISTING AGGREGATE SHOULDER
  - 5. EXISTING LEVELING BINDER
  - 6. EXISTING P.C.C. SHOULDERS
  - 7. EXISTING P.C.C. PAVEMENT
  - 8. EXISTING P.C.C. PAVEMENT, 6 1/2"

FILE NAME =	USER NAME = laughlin1	DESIGNED -	REVISED -	<b>STATE OF ILLINOIS DEPARTMENT OF TRANSPORTATION</b>	<b>TYPICAL SECTION</b>				F.A.S. RTE.	SECTION	COUNTY	TOTAL SHEETS	SHEET NO.		
c:\pwwork\pwwork\laughlin1\0258086\0672E30-shr-typical.dgn		DRAWN -	REVISED -		SCALE:	SHEET NO.	OF	SHEETS	STA.	TO STA.	1619	ICJ-1	SANGAMON	10	4
PLOT SCALE = 30.0000' / in.		CHECKED -	REVISED -		CONTRACT NO. 72E30										
PLOT DATE = Feb-18-2011 10:01:39AM		DATE -	REVISED -		ILLINOIS FED. AID PROJECT										



**EXISTING TYPICAL CROSS SECTION (3)**

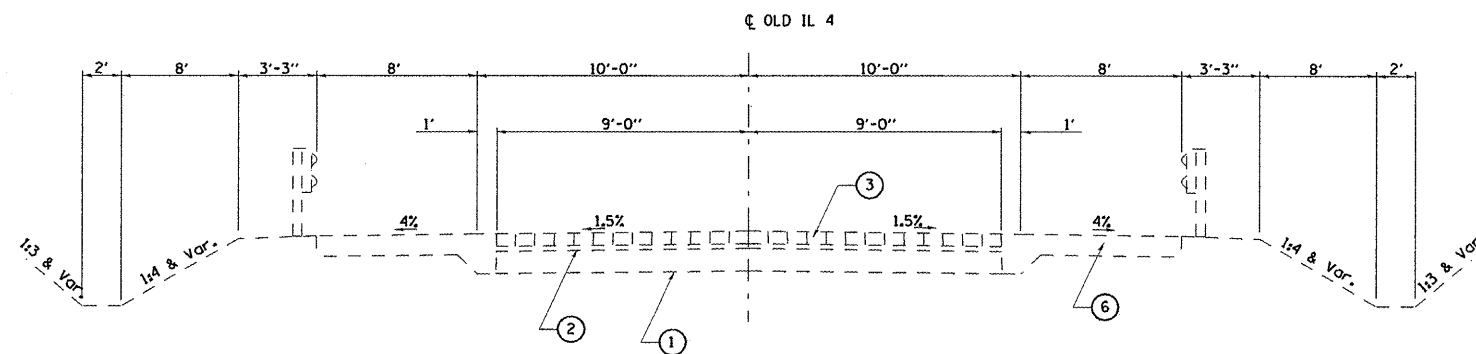
OLD IL 4

LIMITS FOR BRICK PAVEMENT

STA 775+13.31 TO STA 776+57.66  
STA 777+61.68 TO STA 779+07.00

LEGEND

1. EXISTING PCC BASE COURSE, 8"
2. EXISTING MASTIC CUSHION
3. EXISTING BRICK PAVEMENT
4. EXISTING AGGREGATE SHOULDER
5. EXISTING LEVELING BINDER
6. EXISTING P.C.C. SHOULDERS
7. EXISTING P.C.C. PAVEMENT



**EXISTING TYPICAL CROSS SECTION (4)**

OLD IL 4

LIMITS FOR BRICK PAVEMENT

STA 746+69.39 TO STA 747+81.59  
STA 776+57.66 TO STA 777+61.68

FILE NAME =	USER NAME = laughlinr1	DESIGNED -	REVISED -
cr:\pwork\pmdot\laughlinr1\d0258086\0672E30-shr-typical.dgn		DRAWN -	REVISED -
		CHECKED -	REVISED -
		DATE -	REVISED -

STATE OF ILLINOIS  
DEPARTMENT OF TRANSPORTATION

TYPICAL SECTION

SCALE: SHEET NO. OF SHEETS STA. TO STA.

F.A.S. RTE.	SECTION	COUNTY	TOTAL SHEETS	SHEET NO.
1619	(C)-1	SANGAMON	10	5
CONTRACT NO. 72E30				
ILLINOIS FED. AID PROJECT				

LENGTH WIDTH

BRICK PAV'T REM AND REPL	CLASS C PATCH 7" (SPECIAL)			
	TYPE 1	TYPE 2	TYPE 3	TYPE 4
SQ FT	SQ YD	SQ YD	SQ YD	SQ YD

STA. 747+25 to STA. 755+54

40	6	CL	336.0				26.7
18	6	FULL WIDTH	160.0		12.0		
8	3	LT	50.0	2.7			

STA. 755+54 to STA. 771+72

12	3	RT	70.0	4.0			
27	3	CL	145.0		9.0		
6	4	LT	48.0	2.7			
8	7	CL	90.0		6.2		

STA. 771+72 to STA. 777+00

12	4	CL	84.0		5.3		
16	6	CL	144.0		10.7		
18	11	CL	260.0			22.0	
90	3	RT	460.0				30.0
19	7	LT	189.0		14.8		
7	4		54.0	3.1			
8	4		60.0	3.6			

STA. 777+00 to STA. 780+55

18	4	FULL WIDTH	120.0		8.0		
35	18	FULL WIDTH	740.0				70.0
8	6	LT	80.0		5.3		
25	4	CL	162.0		11.1		

STA. 780+55 to STA. 785+12

75	3	LT	385.0				25.0
60	12	LT	868.0				80.0
80	3	LT	410.0				26.7
80	4	LT	492.0				35.6
10	6	LT	96.0		6.7		

STA. 785+12 to STA. 788+37

120	6	RT	976.0				80.0
50	18		1040.0				100.0

STA. 788+37 to STA. 792+69

40	3	RT	210.0		13.3		
60	6	RT	496.0				40.0

LENGTH WIDTH

BRICK PAV'T REM AND REPL	CLASS C PATCH 7" (SPECIAL)			
	TYPE 1	TYPE 2	TYPE 3	TYPE 4
SQ FT	SQ YD	SQ YD	SQ YD	SQ YD

STA. 792+69 to STA. 805+50

40	3	RT	210.0		13.3		
110	4	RT	672.0				48.9
42	3	RT	220.0		14.0		
10	3	LT	60.0	3.3			
9	4	RT	66.0	4.0			
23	4	CL	150.0		10.2		
14	4	RT	96.0		6.2		
9	4	LT	66.0	4.0			
8	4	LT	60.0	3.6			
6	4	LT	48.0	2.7			
9	4	RT	66.0	4.0			
6	4	RT	48.0	2.7			
23	3	LT	125.0		7.7		
23	3	RT	125.0		7.7		
8	3	RT	50.0	2.7			
3	3	RT	25.0	1.0			
14	5	RT	112.0		7.8		
10	5	RT	84.0		5.6		
4	3	RT	30.0	1.3			
6	6	LT	64.0	4.0			

3500	3	CURB REPAIR	17510.0				
------	---	-------------	---------	--	--	--	--

TOTALS

28160.0	52.1	174.9	22.0	562.9
SQ FT	SQ YD	SQ YD	SQ YD	SQ YD
BRICK PAV'T REM AND REPL	TYPE 1	TYPE 2	TYPE 3	TYPE 4
	CLASS C PATCH 7" (SPECIAL)			

USE

28160.0	53.0	175.0	22.0	563.0
---------	------	-------	------	-------

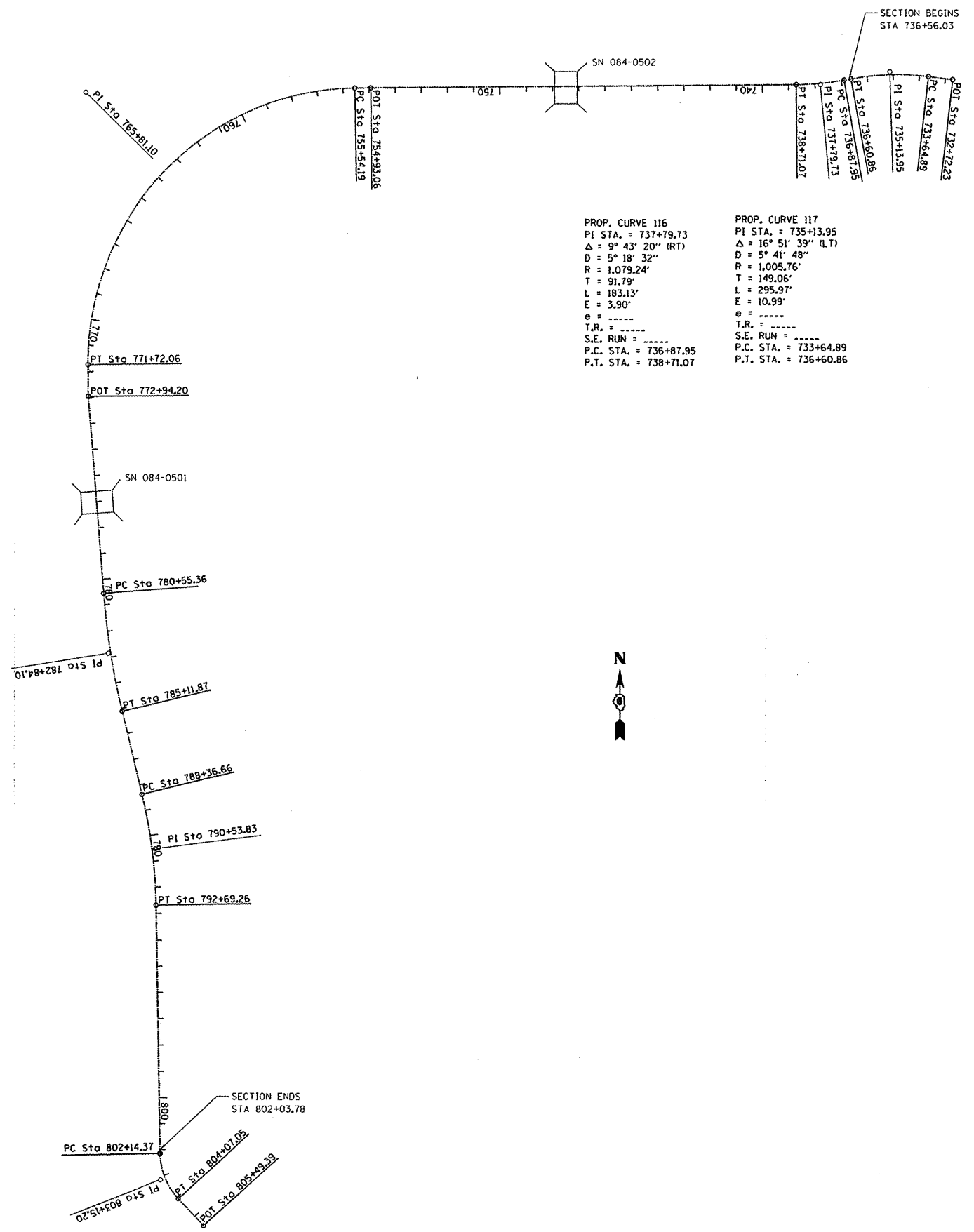
FILE NAME =	USER NAME = laughlinr1	DESIGNED -	REVISED -
c:\pwork\pwidot\laughlinr1\0259086\067E30-sh1-schedule.dgn		DRAWN -	REVISED -
	PLOT SCALE = 100.0000 "/ in.	CHECKED -	REVISED -
	PLOT DATE = Feb-18-2011 10:01:43AM	DATE -	REVISED -

STATE OF ILLINOIS  
DEPARTMENT OF TRANSPORTATION

SCHEDULE OF QUANTITIES

SCALE:	SHEET NO.	OF	SHEETS	STA.	TO STA.
--------	-----------	----	--------	------	---------

F.A.S. RTE.	SECTION	COUNTY	TOTAL SHEETS	SHEET NO.
1619	(C)-1	SANGAMON	10	6
CONTRACT NO. 72E30			[ILLINOIS] FED. AID PROJECT	



PROP. CURVE 114  
 PI STA. = 765+81.10  
 $\Delta = 89^\circ 31' 40''$  (LT)  
 $D = 5^\circ 32' 01''$   
 $R = 1,035.40'$   
 $T = 1,026.90'$   
 $L = 1,617.87'$   
 $E = 422.88'$   
 $\theta = \text{-----}$   
 T.R. = -----  
 S.E. RUN = -----  
 P.C. STA. = 755+54.19  
 P.T. STA. = 771+72.06

PROP. CURVE 113  
 PI STA. = 782+84.10  
 $\Delta = 9^\circ 04' 54''$  (LT)  
 $D = 1^\circ 59' 22''$   
 $R = 2,880.07'$   
 $T = 228.73'$   
 $L = 456.51'$   
 $E = 9.07'$   
 $\theta = \text{-----}$   
 T.R. = -----  
 S.E. RUN = -----  
 P.C. STA. = 780+55.36  
 P.T. STA. = 785+11.87

PROP. CURVE 112  
 PI STA. = 790+53.83  
 $\Delta = 12^\circ 31' 29''$  (RT)  
 $D = 2^\circ 53' 43''$   
 $R = 1,978.99'$   
 $T = 217.17'$   
 $L = 432.60'$   
 $E = 11.88'$   
 $\theta = \text{-----}$   
 T.R. = -----  
 S.E. RUN = -----  
 P.C. STA. = 788+36.66  
 P.T. STA. = 792+69.26

PROP. CURVE 111  
 PI STA. = 803+15.20  
 $\Delta = 41^\circ 43' 05''$  (LT)  
 $D = 21^\circ 39' 05''$   
 $R = 264.63'$   
 $T = 100.83'$   
 $L = 192.68'$   
 $E = 18.56'$   
 $\theta = \text{-----}$   
 T.R. = -----  
 S.E. RUN = -----  
 P.C. STA. = 802+14.37  
 P.T. STA. = 804+07.05

PROP. CURVE 116  
 PI STA. = 737+79.73  
 $\Delta = 9^\circ 43' 20''$  (RT)  
 $D = 5^\circ 18' 32''$   
 $R = 1,079.24'$   
 $T = 91.79'$   
 $L = 183.13'$   
 $E = 3.90'$   
 $\theta = \text{-----}$   
 T.R. = -----  
 S.E. RUN = -----  
 P.C. STA. = 736+87.95  
 P.T. STA. = 738+71.07

PROP. CURVE 117  
 PI STA. = 735+13.95  
 $\Delta = 16^\circ 51' 39''$  (LT)  
 $D = 5^\circ 41' 48''$   
 $R = 1,005.76'$   
 $T = 149.06'$   
 $L = 295.97'$   
 $E = 10.99'$   
 $\theta = \text{-----}$   
 T.R. = -----  
 S.E. RUN = -----  
 P.C. STA. = 733+64.89  
 P.T. STA. = 736+60.86

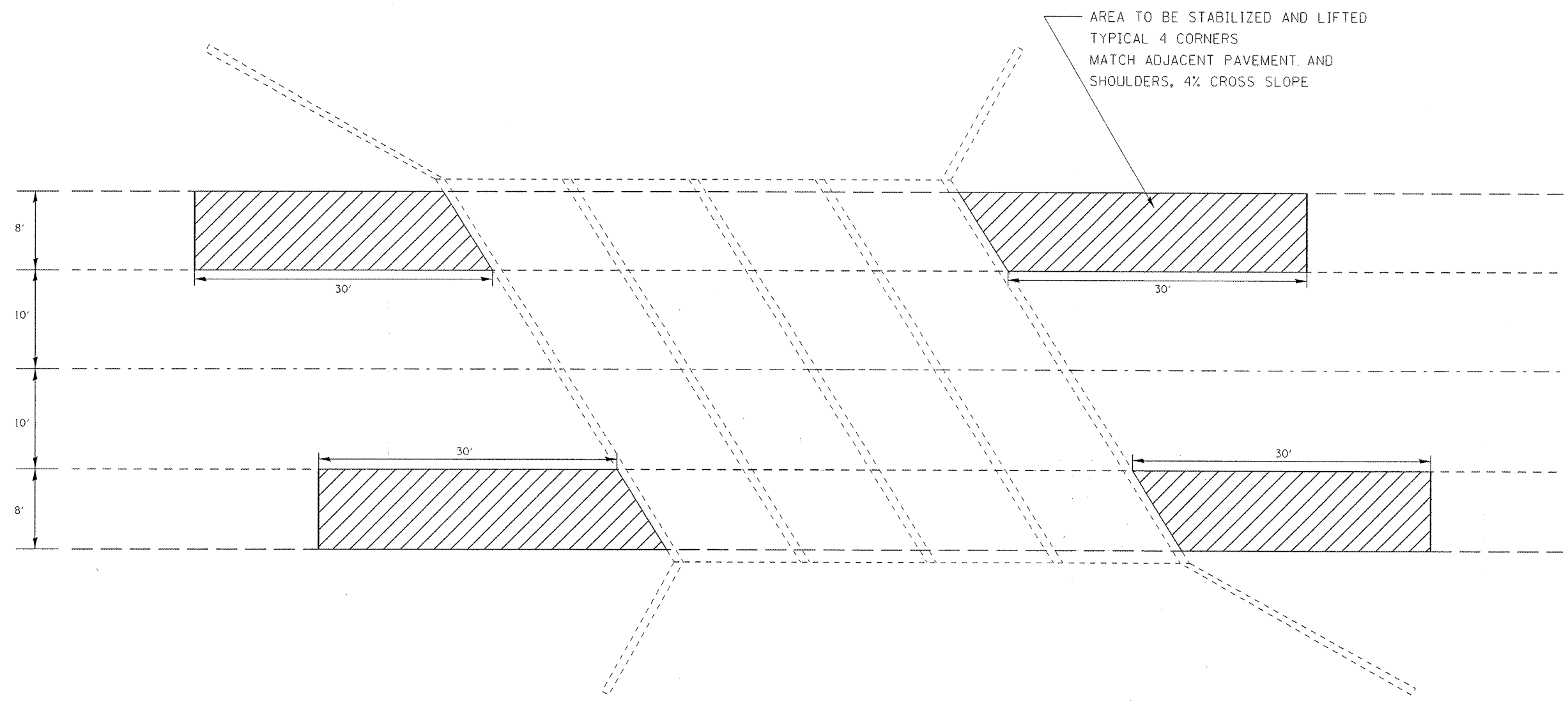
FILE NAME =	USER NAME = laughlinr1	DESIGNED -	REVISED -
et:\pwwork\prido\laughlinr1\0258086\0258086.dgn		DRAWN -	REVISED -
		CHECKED -	REVISED -
		DATE -	REVISED -

**STATE OF ILLINOIS**  
**DEPARTMENT OF TRANSPORTATION**

**LINE DIAGRAM**  
**FAS 1619 (OLD IL 4)**

SCALE: SHEET NO. OF SHEETS STA. TO STA.

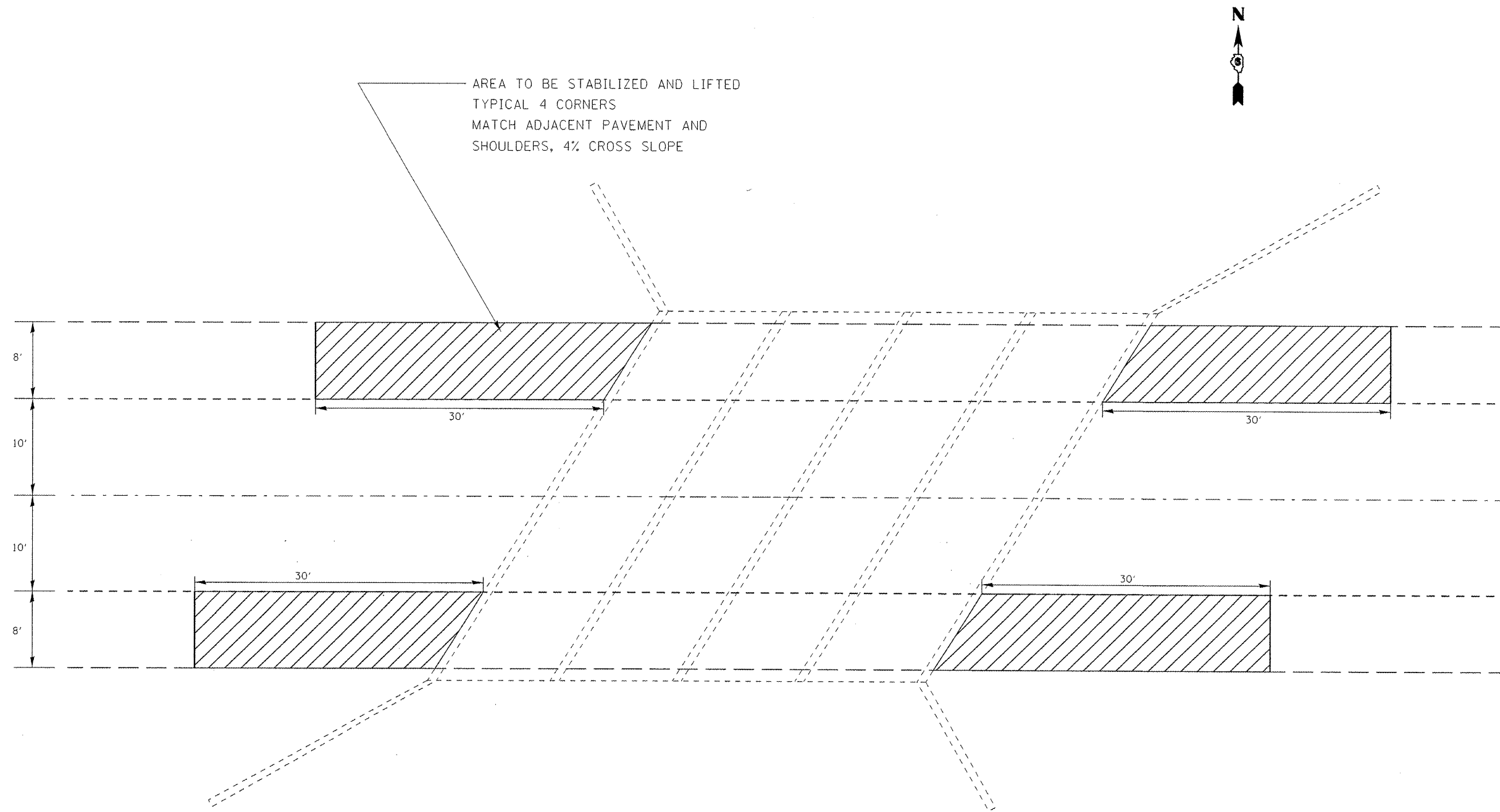
F.A.S. RTE.	SECTION	COUNTY	TOTAL SHEETS	SHEET NO.
1619	(C)-1	SANGAMON	10	7
CONTRACT NO. 72E30				
ILLINOIS FED. AID PROJECT				



**STRUCTURE NUMBER: 084-0501**

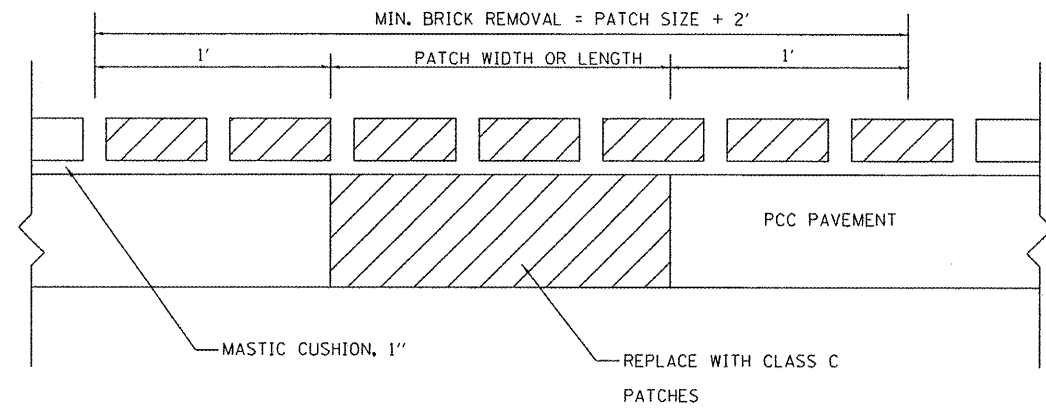
FILE NAME =	USER NAME = laughlinr1	DESIGNED -	REVISED -	<b>STATE OF ILLINOIS DEPARTMENT OF TRANSPORTATION</b>	<b>SHOULDER STABILIZATION PLAN</b>			F.A.S. RTE.	SECTION	COUNTY	TOTAL SHEETS	SHEET NO.
c:\pwork\pwidot\laughlinr1\0258086\0672E30-shr-ImprovementPlans.dgn		DRAWN -	REVISED -		1619	(C1)-1	SANGAMON	10	8			
PLOT SCALE = 1.0000' / 1"		CHECKED -	REVISED -					CONTRACT NO. 72E30				
PLOT DATE = Feb-18-2011 10:01:55AM		DATE -	REVISED -		SCALE:	SHEET NO.	OF SHEETS	STA.	TO STA.	ILLINOIS FED. AID PROJECT		






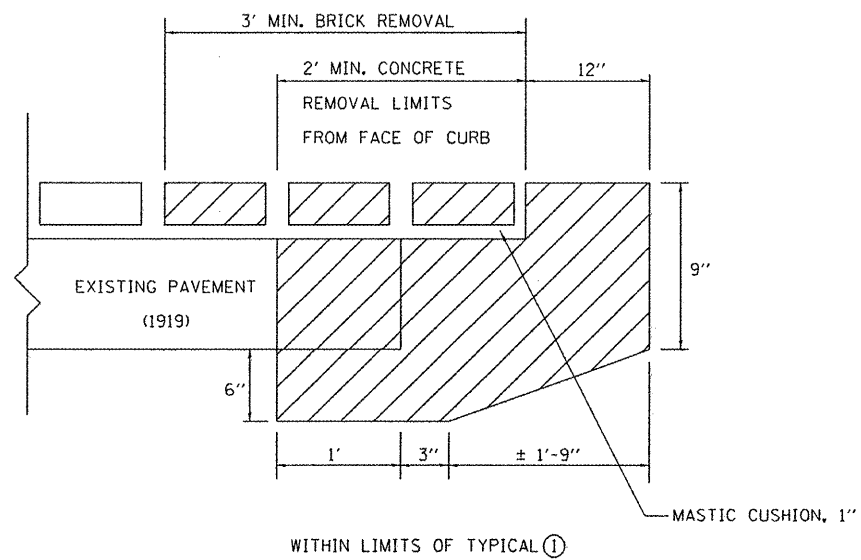
**STRUCTURE NUMBER: 084-0502**

FILE NAME =	USER NAME = laughtlinr1	DESIGNED -	REVISED -	<b>STATE OF ILLINOIS DEPARTMENT OF TRANSPORTATION</b>	<b>SHOULDER STABILIZATION PLAN</b>			F.A.S. RTE.	SECTION	COUNTY	TOTAL SHEETS	SHEET NO.
ct:\pwork\pwork\laughtlinr1\0258086\0672E30-shl-ImprovementPlans.dgn		DRAWN -	REVISED -		1619	ICI-1	SANGAMON	10	9			
PLOT SCALE = 1:8000 1/8" = 1'		CHECKED -	REVISED -		CONTRACT NO. 72E30							
PLOT DATE = Feb-18-2011 10:01:55AM		DATE -	REVISED -		SCALE:	SHEET NO.	OF SHEETS	STA.	TO STA.	ILLINOIS FED. AID PROJECT		

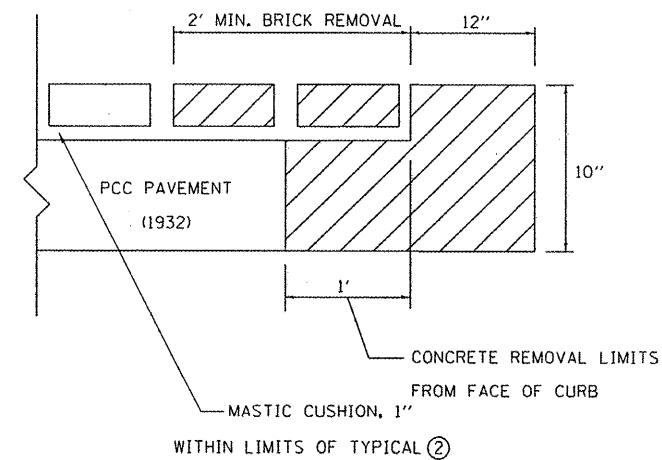


DETAIL OF BRICK PAVEMENT REMOVAL AND REPLACEMENT

 REMOVAL AND REPLACEMENT LIMITS



DETAIL OF CONCRETE CURB REMOVAL AND REPLACEMENT



DETAIL OF CURB REMOVAL AND REPLACEMENT

FILE NAME =	USER NAME = laughlin1	DESIGNED -	REVISED -
c:\pwork\pudot\laughlin\0258086\0672E30-shr-details.dgn		DRAWN -	REVISED -
PLOT SCALE = 40.0000 / in.		CHECKED -	REVISED -
PLOT DATE = Feb-18-2011 10:01:59AM		DATE -	REVISED -

STATE OF ILLINOIS  
DEPARTMENT OF TRANSPORTATION

DETAILS

SCALE: SHEET NO. OF SHEETS STA. TO STA.

F.A.S. RTE.	SECTION	COUNTY	TOTAL SHEETS	SHEET NO.
1619	(C1)-1	SANGAMON	10	10
CONTRACT NO. 72E30				
ILLINOIS FED. AID PROJECT				