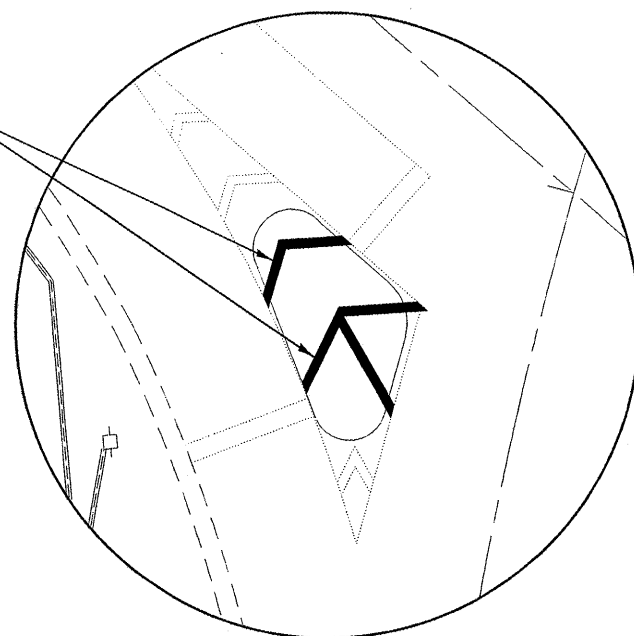
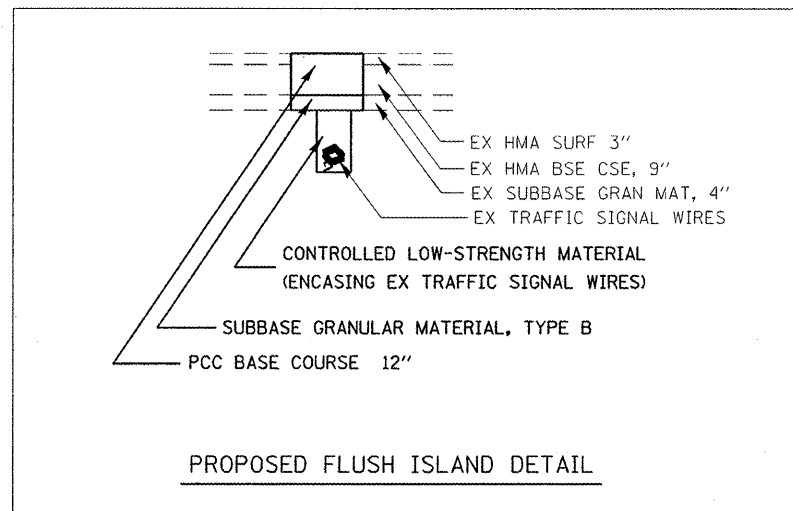


URETHANE PAVEMENT MARKING - LINE 12"

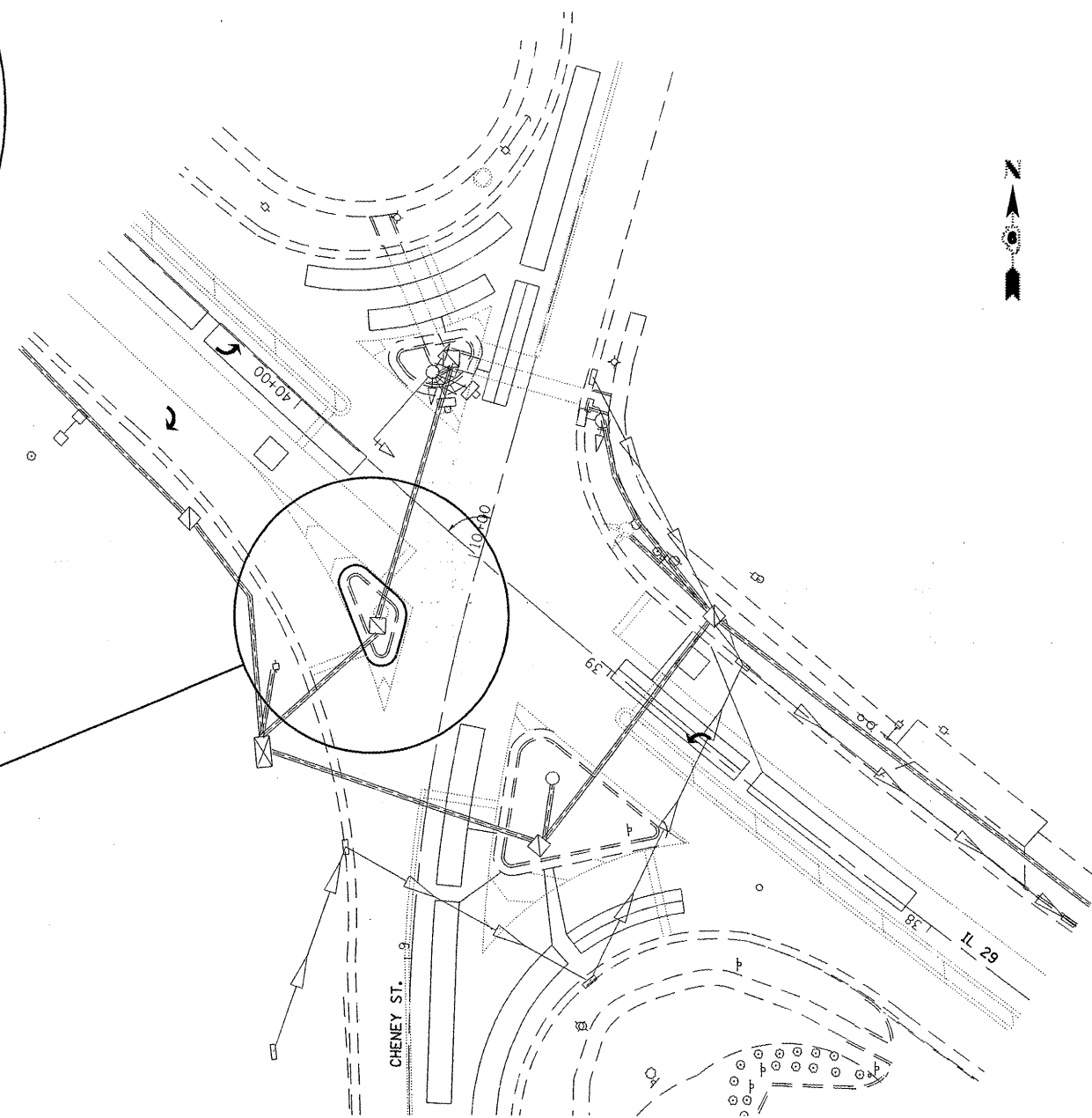
NOTE:  
EVENLY SPACE STRIPES BETWEEN  
EXISTING PAVEMENT MARKINGS



STRIPING DETAIL



PROPOSED FLUSH ISLAND DETAIL

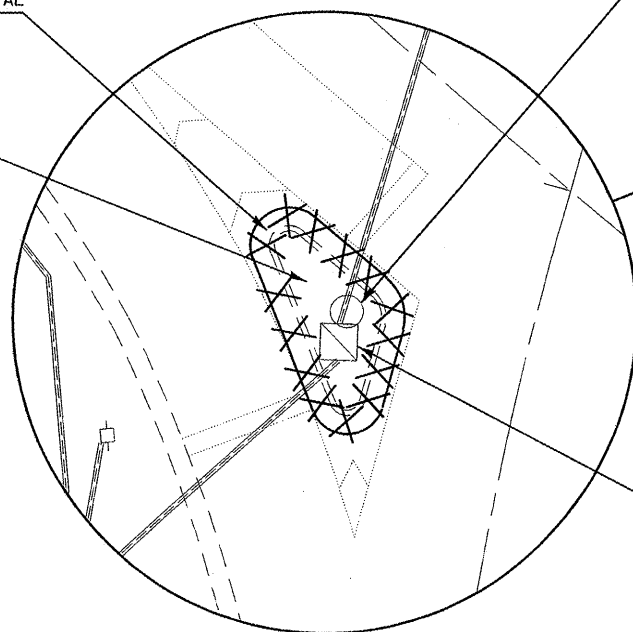


INTERSECTION OF  
IL 29 & CHENEY ST

COMBINATION CURB AND GUTTER REMOVAL

CONCRETE MEDIAN SURFACE REMOVAL

REMOVE CONCRETE FOUNDATION  
- GROUND MOUNT



REMOVE EXISTING HANDHOLE

ISLAND REMOVAL

FILE NAME =  
c:\pwork\pwork\caxte\0253119\0672E2

USER NAME = caxte  
-shtrplan.dgn  
PLOT SCALE = 40.0000' / IN.  
PLOT DATE = Feb-10-2011 04:33:40PM

DESIGNED -  
DRAWN -  
CHECKED -  
DATE -

REVISED -  
REVISED -  
REVISED -  
REVISED -

STATE OF ILLINOIS  
DEPARTMENT OF TRANSPORTATION

PLAN SHEET

SCALE: 1" = 20' SHEET NO. OF SHEETS STA. TO STA.

F.A.P. RTE.	SECTION	COUNTY	TOTAL SHEETS	SHEET NO.
75	IN	CHRISTIAN	4	4
CONTRACT NO. 72E22				
ILLINOIS FED. AID PROJECT				