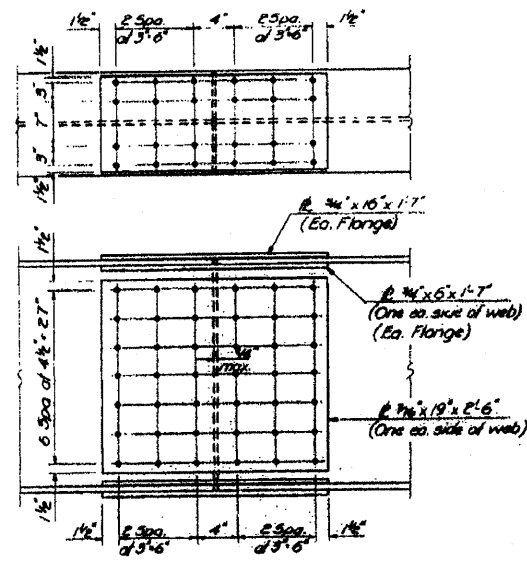


# FOR INFORMATION ONLY

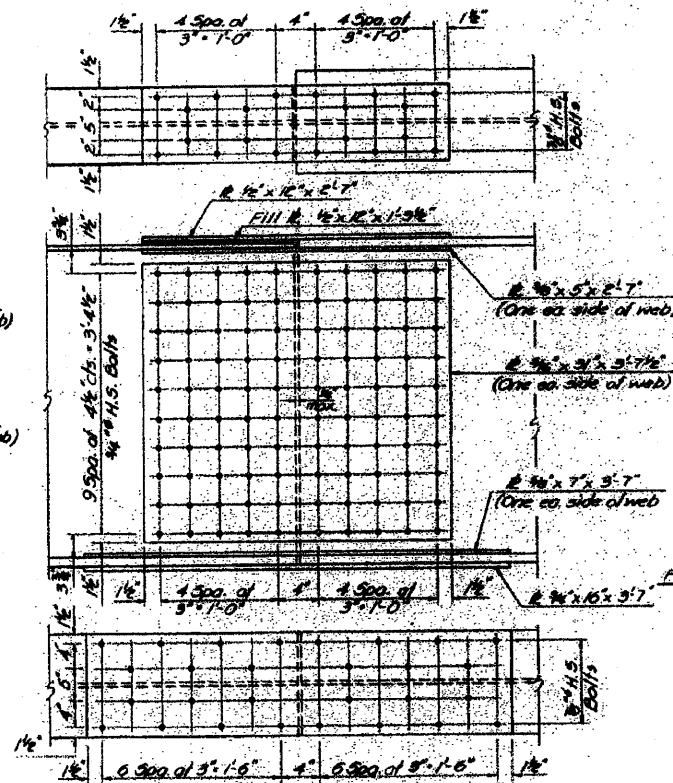
STATE OF ILLINOIS  
DEPARTMENT OF TRANSPORTATION

|           |              |              |              |          |              |
|-----------|--------------|--------------|--------------|----------|--------------|
| DATE      | DESIGNED BY  | CHECKED BY   | DRAWN BY     | PLT. NO. | SHEET NO. 18 |
|           | J. K. Knecht | J. K. Knecht | S.G. Pearson | 11       | 24           |
| 35 SHEETS |              |              |              |          |              |

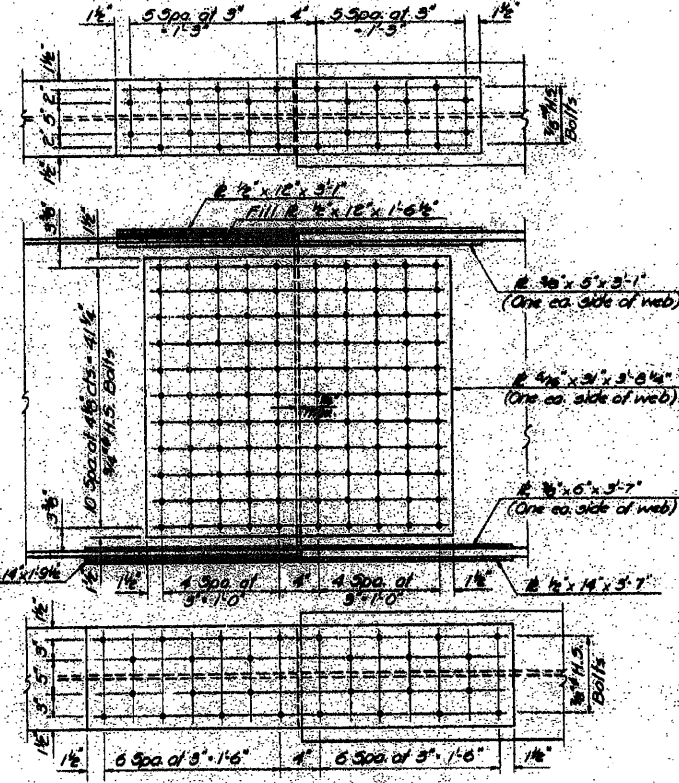


**SPLICE #1 THRU #4**  
1/4" H.S. BOLTS THROUGHOUT  
(M 183 PLATE)

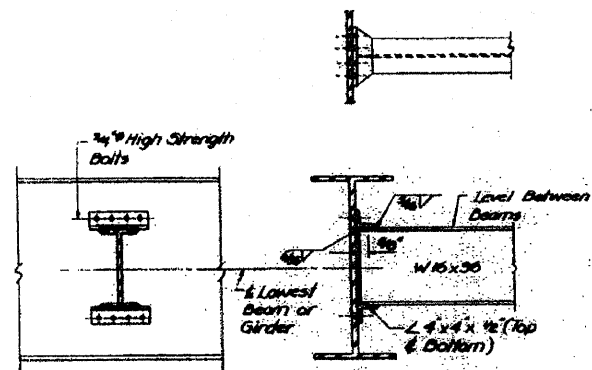
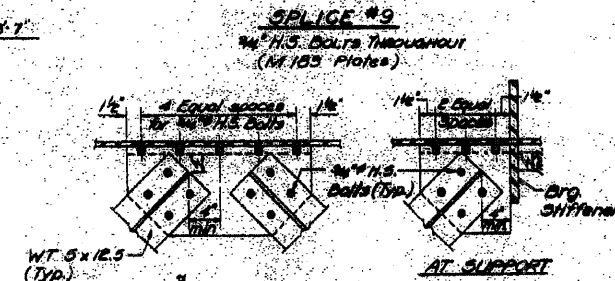
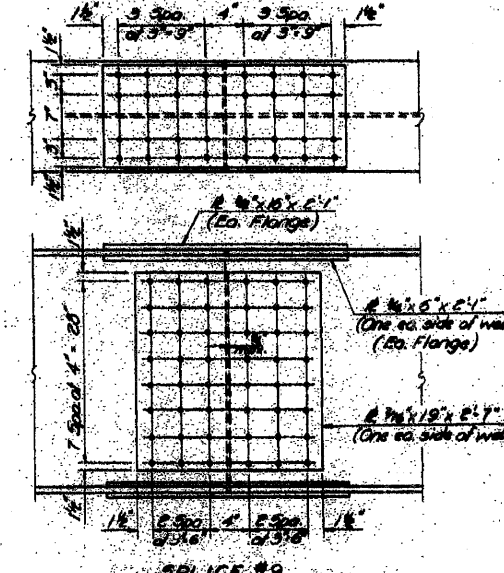
Note: All splice plates shall conform to the Supplemental Requirements for Notch Toughness (Zone 2)



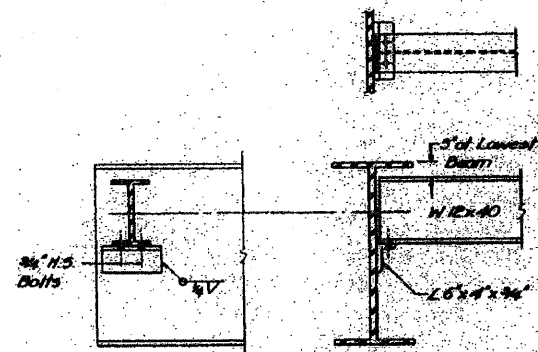
**SPLICE #6 (LOOKING WEST)**  
**SPLICE #7 (LOOKING EAST)**  
(M 223 PLATES)



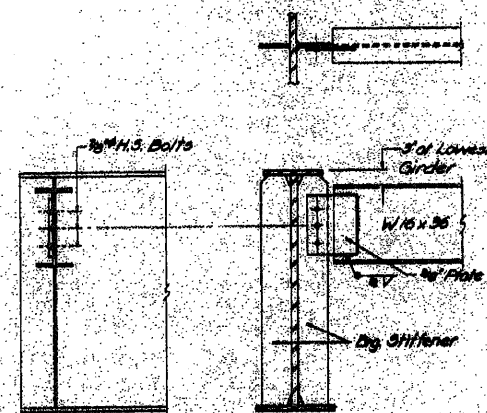
**SPLICE #6 (LOOKING EAST)**  
**SPLICE #8 (LOOKING WEST)**  
(M 223 PLATES)



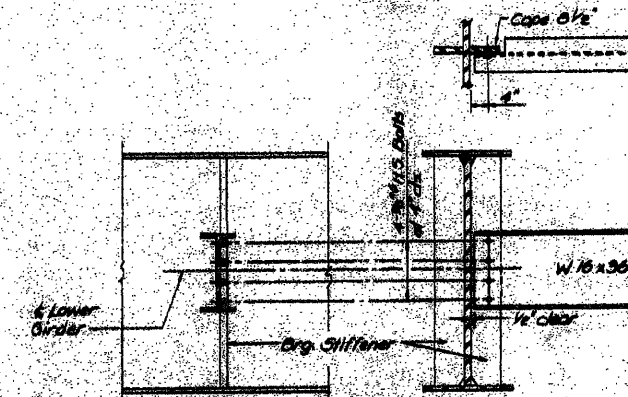
**INTERIOR DIAPHRAGM-D**  
(200 Required)



**END DIAPHRAGM-D**  
(20 Required)



**END DIAPHRAGM-D<sub>g</sub>**  
(10 Required)



**INTERIOR DIAPHRAGM-D<sub>g</sub>**  
(10 Required)

|          |              |          |       |
|----------|--------------|----------|-------|
| DESIGNED | DAW KNECHT   | DATE     | 11/20 |
| CHECKED  | J. K. Knecht | PLT. NO. | 11    |
| DRAWN    | S.G. Pearson | DATE     |       |
| CHECKED  | J. K. Knecht | DATE     |       |

**NOTES**  
All holes used for the connection of diaphragms and lateral bracing shall be fabricated 3/16" oversized.  
Hardened washers shall be required over all structural beams.  
All contact surfaces of joints for the diaphragms and lateral bracing shall be free of paint or rust.

STRUCTURAL STEEL  
F.A. 101 - SEC. 177-40-1  
SHERMAN COUNTY  
CONTRACT NO. 64C88

|  |                    |                                      |          |   |   |                    |                             |                          |                           |           |  |
|--|--------------------|--------------------------------------|----------|---|---|--------------------|-----------------------------|--------------------------|---------------------------|-----------|--|
| FILE NAME =  | USER NAME = linkdj | DESIGNED -                           | REVISD - | STATE OF ILLINOIS<br>DEPARTMENT OF TRANSPORTATION | Existing Bridge Plans<br>Structure No. 089-0042 | F.A. RTE.          | SECTION                     | COUNTY                   | TOTAL SHEETS              | SHEET NO. |  |
| D:\BRV\Brdge Painting\Contract\PAINTING\64C88\PLNeng.dgn |                    | DRAWN -                              | REVISD - |   |   | var                | D2 Bridge Painting 2011-2   | various                  | 25                        | 21        |  |
|  |                    | PLDT SCALE = 5/8.0000" / IN.         | REVISD - |   |   | SCALE: _____       | SHEET NO. ___ OF ___ SHEETS | STA. _____ TO STA. _____ | ILLINOIS FED. AID PROJECT |           |  |
|  |                    | PLDT DATE = Sat Jan 22 07:09:40 2011 | REVISD - |   |   | CONTRACT NO. 64C88 |                             |                          |                           |           |  |