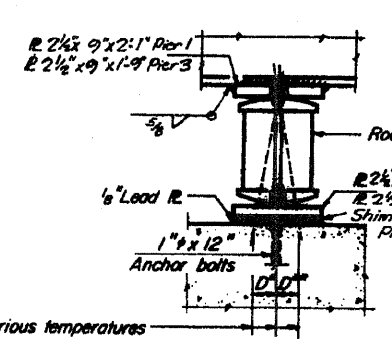
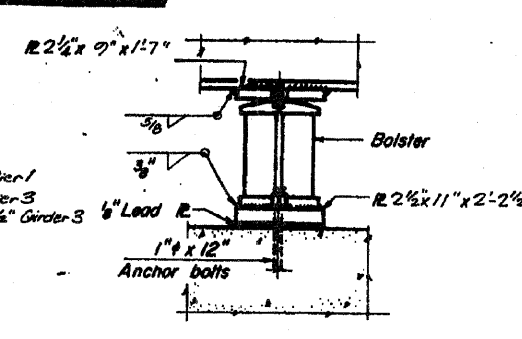


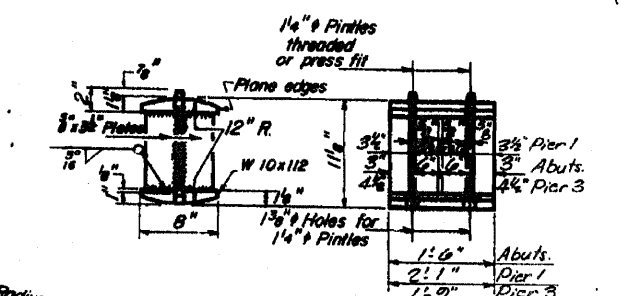
SECTION



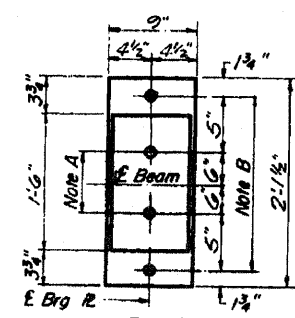
ELEVATION



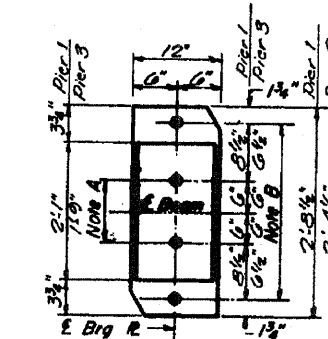
ELEVATION



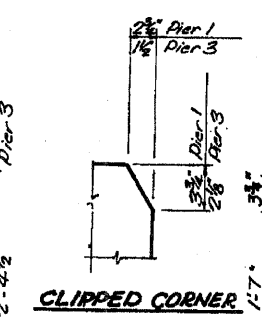
ROCKER



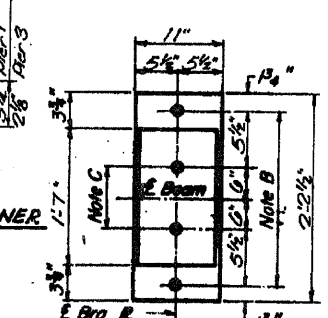
PLAN AT ABUTMENT



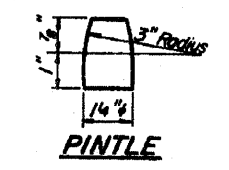
PLAN AT PIERS 1 & 3



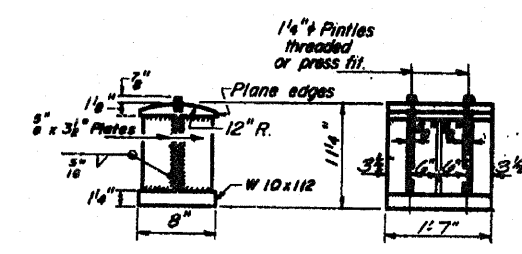
CLIPPED CORNER



PLAN AT PIER 2



PINTLE



BOLSTER

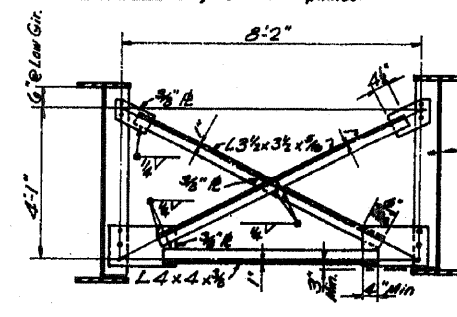
NOTES ON SETTING OF ANCHOR BOLTS AT EXP. BRGS.

- a) D* (Side of brg away from fixed brg) D** = 1/8" per each 100' of expansion for every 15° fall below the normal temp. of 50°F
- D** (Side of brg toward fixed brg) D** = 1/8" per each 100' of expansion for every 15° rise above the normal temp. of 50°F
- b) After beams have been erected and dimensions D* or D** determined, holes shall be drilled and anchor bolts shall be grouted in place. All fixed anchor bolts may be built into the masonry.

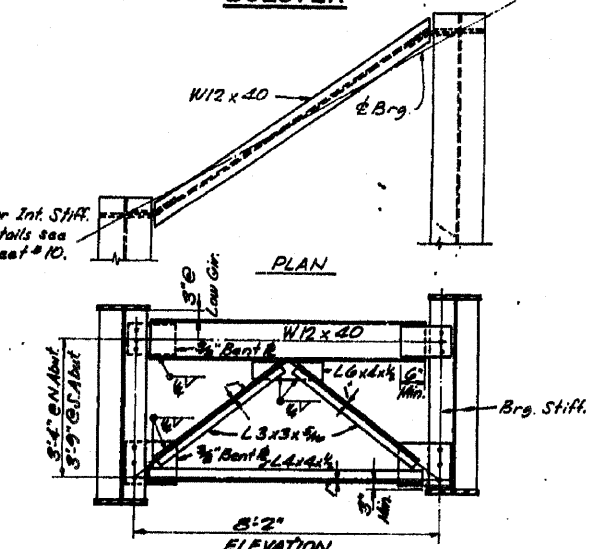
BEARING ASSEMBLY DETAILS

	Old Span Pier 1	25 Span Pier 2	Old Span Pier 3	Old Span Pier 4
Ls (in.)	40202	42688	52400	52160
Ss (in.)	1771.7	2233.5	1135.2	1055.4
DL (k)	7.82	1.92	1.102	1.102
MOL (k)	1214	2849	447	1009
MPL (k)	274	307	3.25	7.9
IC (in.)	20876	39311	5720	6608
Sc (in.)	2183	1410.0	1182.4	1048.7
Spl (in.)	0.561	0.561	0.561	0.561
Misc (k)	0.50	7004	329	502
ISpl (k)	3.69	2.14	2.91	3.04
IC (in.)	112330	80823	69293	91364
Sc (in.)	22871	1540	728.4	1785.8
MIL (k)	1303	1704	854	809
Mimp (k)	267	201	255	179
MOML (k)	1564	1520	1033	988
IC (k)	3074	337	749	470
ISPL (k)	3074	1163	1822	1822
VR	33.9	28.1	68.3	78.7

IC and Sc are the moment of inertia and section modulus of the steel section.
 IC and Sc are the moment of inertia and section modulus of the composite section used in computing IC.
 VR is the maximum & + impact shear range in span.



CROSS FRAME CF1
GG Required



CROSS FRAME CF
GG Required

	Pier 1	Pier 2	Pier 3	Abut
ROL (k)	79.2	238.1	170.3	149.0
ROL (k)	278	212	212	212
IC (k)	4.3	10.4	10.4	10.4
IC (k)	860.9	222.0	222.0	123.2

REACTION TABLE

DESIGNED S.MCK.	EXAMINED
CHECKED C.D.C.	PASSED
DRAWN C.D.C.	APPROVED
CHECKED S.MCK.	

I-2-B 9-1-65, 8-1-70

FOR INFORMATION ONLY

F.A. RTE. 403-SEC 195-2 HVB WHITESIDE COUNTY STATION 1097+78.45