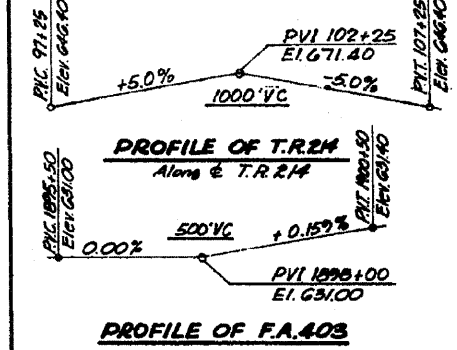
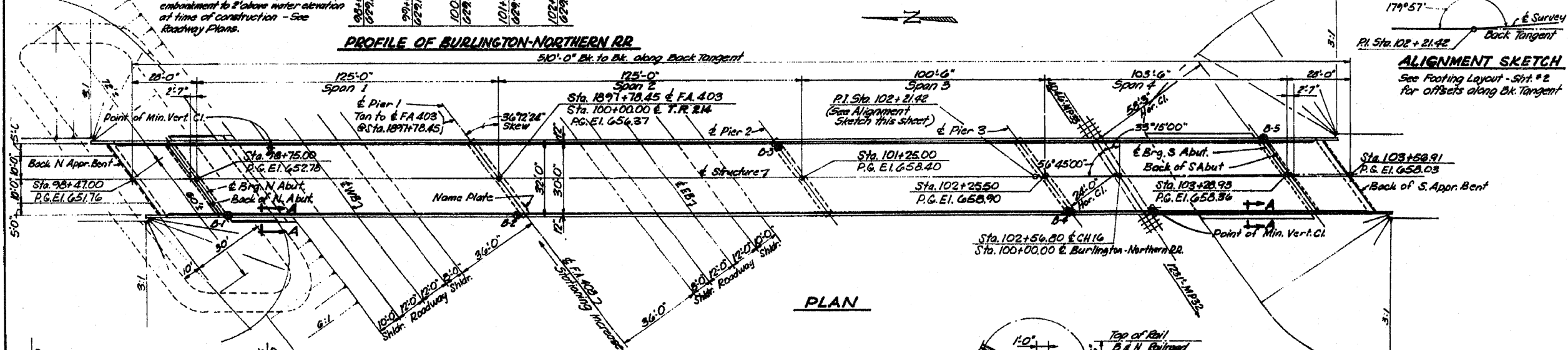
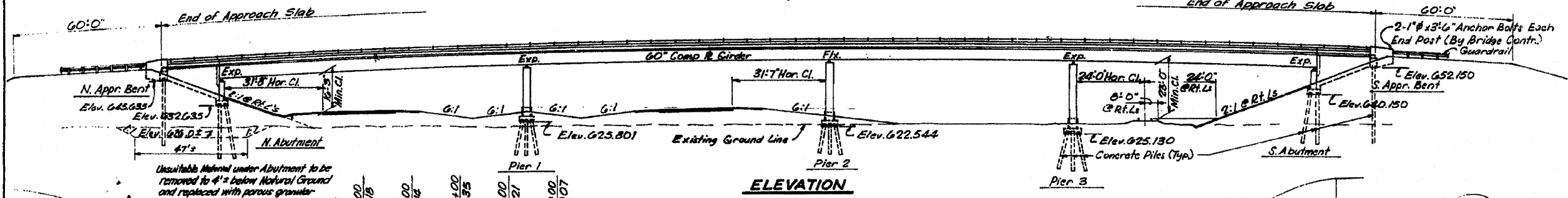


ROUTE NO.	SEC.	COUNTY	TOTAL SHEETS	SHEET NO.	SHEET NO. /
FA 403	195-B	WHITESIDE	436	120	13 SHEETS
FED. ROAD DIST. NO. 7 ILLINOIS I.A. PROJ.					



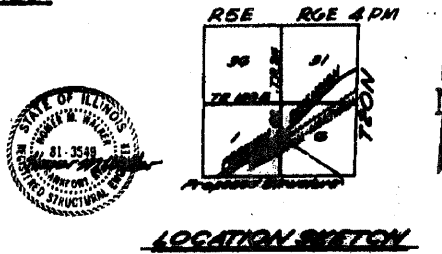
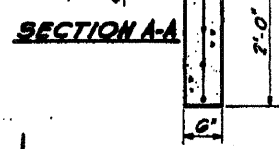
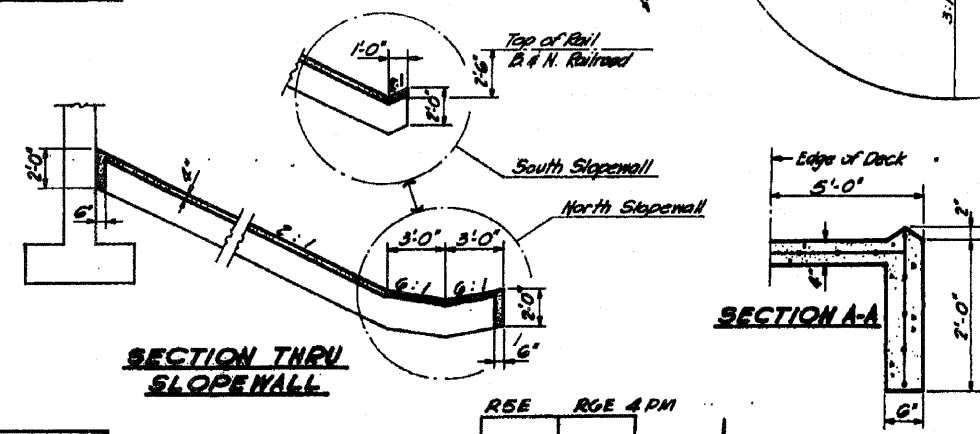
DESIGN STRESSES
 $f_c = 1200$ psi Deck Slab
 $f_c = 1400$ psi Curb, Parapet, Substructure, & Appr. Slab
 $f_c = 75$ psi (Footings)
 $n = 10$
 $f_s = 20,000$ psi Reinf.
 $f_s = 20,000$ psi Struct.
 Allowable & Deflection = $L/200$
 Design Specifications - 1969 AASHTO (as applicable)

LOADING - HS 20-44

CURVE DATA - F.A. 403
 P.I. 1706 + 01.77
 $\Delta = 13^\circ 58' 25''$ Lt.
 $D = 0^\circ 30'$
 $T = 104.828$
 $L = 279.661$
 $R = 11,489.16$
 P.C. 1671 + 91.99
 $S.E. = 0.0241$

STATION 1891 + 78.45
 BUILT 197 BY
 STATE OF ILLINOIS
 FA. RTE. 403 - SEC. 195 - 2ND
 F.A. PROJ. 197-1978-403-1 (3)
 LOADING HS 20

NAME PLATE
 (See Sta. 2115)



GENERAL PLAN & ELEVATION
PROJECT F.A. 403
T.R. 214 OVER F.A. 403 & BURL.-NOR. R.R.
F.A. RTE. 403 - SEC. 195-B
WHITESIDE COUNTY
STATION 1891 + 78.45

PLANS PREPARED BY MACLIE ENGINEERING CO.
 Rev. 7-27-72

FOR INFORMATION ONLY

DESIGNED	C.D.C.	EXAMINED	
CHECKED	H.M.W.	PASSED	
DRAWN	C.D.C.	APPROVED	
CHECKED	S.M.P.		

FILE NAME =	USER NAME = lmkdj	DESIGNED -	REVISED -	STATE OF ILLINOIS DEPARTMENT OF TRANSPORTATION	Existing Plan & Elevation Structure No. 098-0067	SCALE: SHEET NO. ____ OF ____ SHEETS STA. ____ TO STA. ____	F.A.I. RTE.	SECTION	COUNTY	TOTAL SHEETS	SHEET NO.
D:\BNA\Bridg Painting\Contr\cta\PAINTING\64028\PLAN\eng.dgn	PLOT SCALE = 50.0000' / IN.	DRAWN -	REVISED -				88	D2 Bridge Painting 2011-1	Whiteside	14	6
PLOT DATE = Sat Jan 22 06:48:35 2011	DATE -	CHECKED -	REVISED -				CONTRACT NO. 64C28				
							ILLINOIS FED. AID PROJECT				