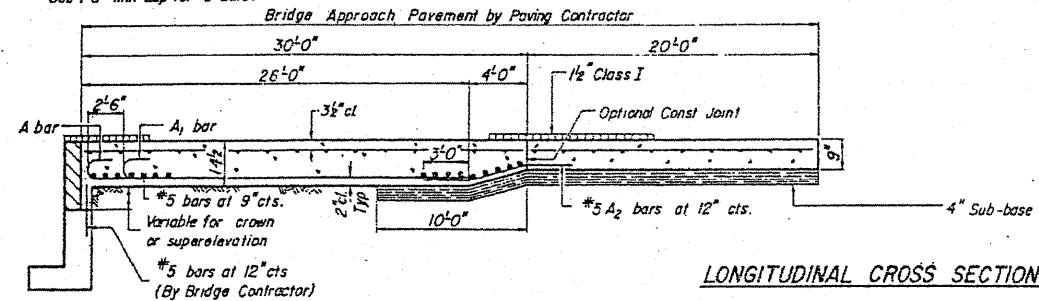
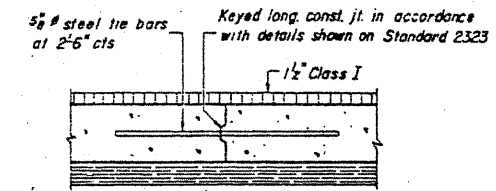


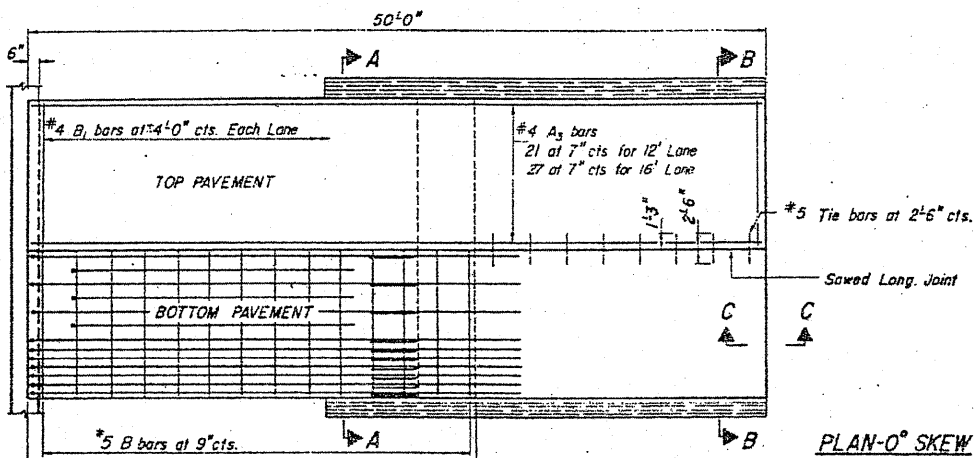
Note: Tilt hook of #9 bars for min. 3 1/2" cl. Use 1'-4" Min. Lap for #4 bars.
Use #6" Min Lap for #5 bars.



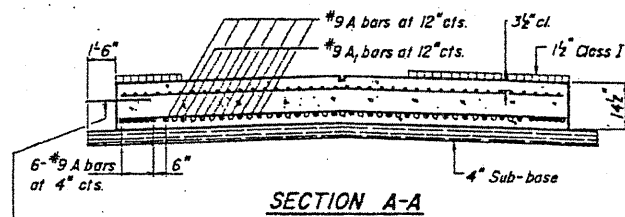
Note: The 4" sub-base shall be of the same material as under adjacent pavement.



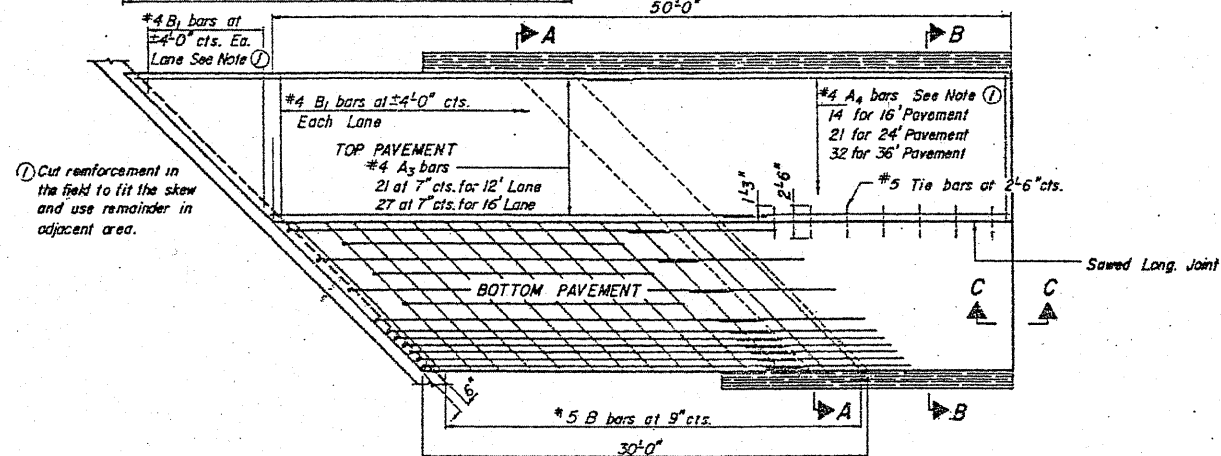
As approved by the Engineer, the contractor may elect to reduce the widths by use of the Optional Longitudinal Construction Joint shown. Joint shall be located at the edge of Traffic Lane.



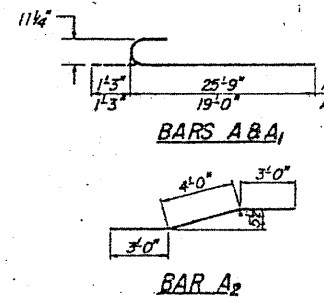
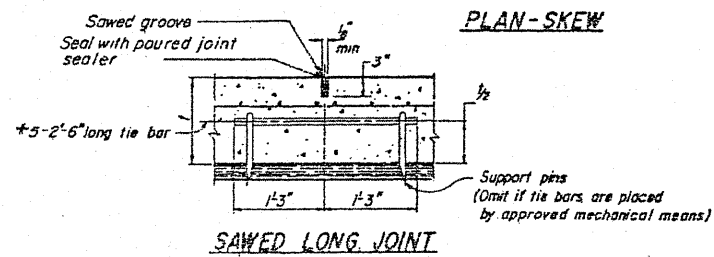
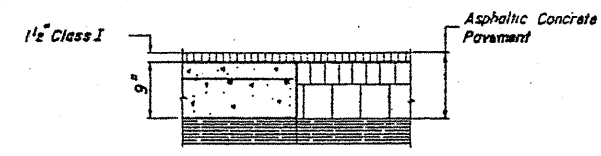
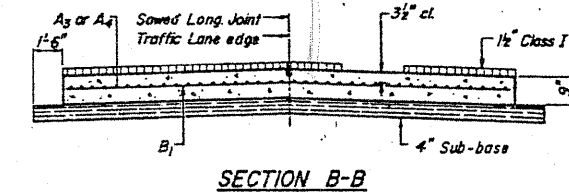
Note: The cost of tie bars, sub-base and bituminous prime shall be included in the cost of Bridge Approach Pavement.



Note: When the road plans show curb and gutter, gutter or bridge approach shoulder pavement adjacent to approach slabs, place 1/2" steel tie bars at 2'-6" centers in accordance with the details for Bulkhead Longitudinal Construction Joint shown on Standard 2323. Cost of the tie bars will be included in the contract unit price for the adjacent item. Transitions for curb and gutter shall be as shown on the plans.



① Cut reinforcement in the field to fit the skew and use remainder in adjacent area.



FOR INFORMATION ONLY

FILE NAME =	USER NAME = mdjjo	DESIGNED -	REVISED -	STATE OF ILLINOIS DEPARTMENT OF TRANSPORTATION	EXISTING BRIDGE APPROACH PAVEMENT STANDARD 2360-2	F.A.P. RTE. 846	SECTION 4 B-2-BR	COUNTY WILL	TOTAL SHEETS 26	SHEET NO. 14		
Plot Scale = 1/8" = 1'-0"	DATE = 2/17/2011	DRAWN -	REVISED -			SCALE:	SHEET NO. 1 OF 2 SHEETS	STA. TO STA.	ILLINOIS FED. AID PROJECT			
		CHECKED -	REVISED -									
		DATE -	REVISED -									