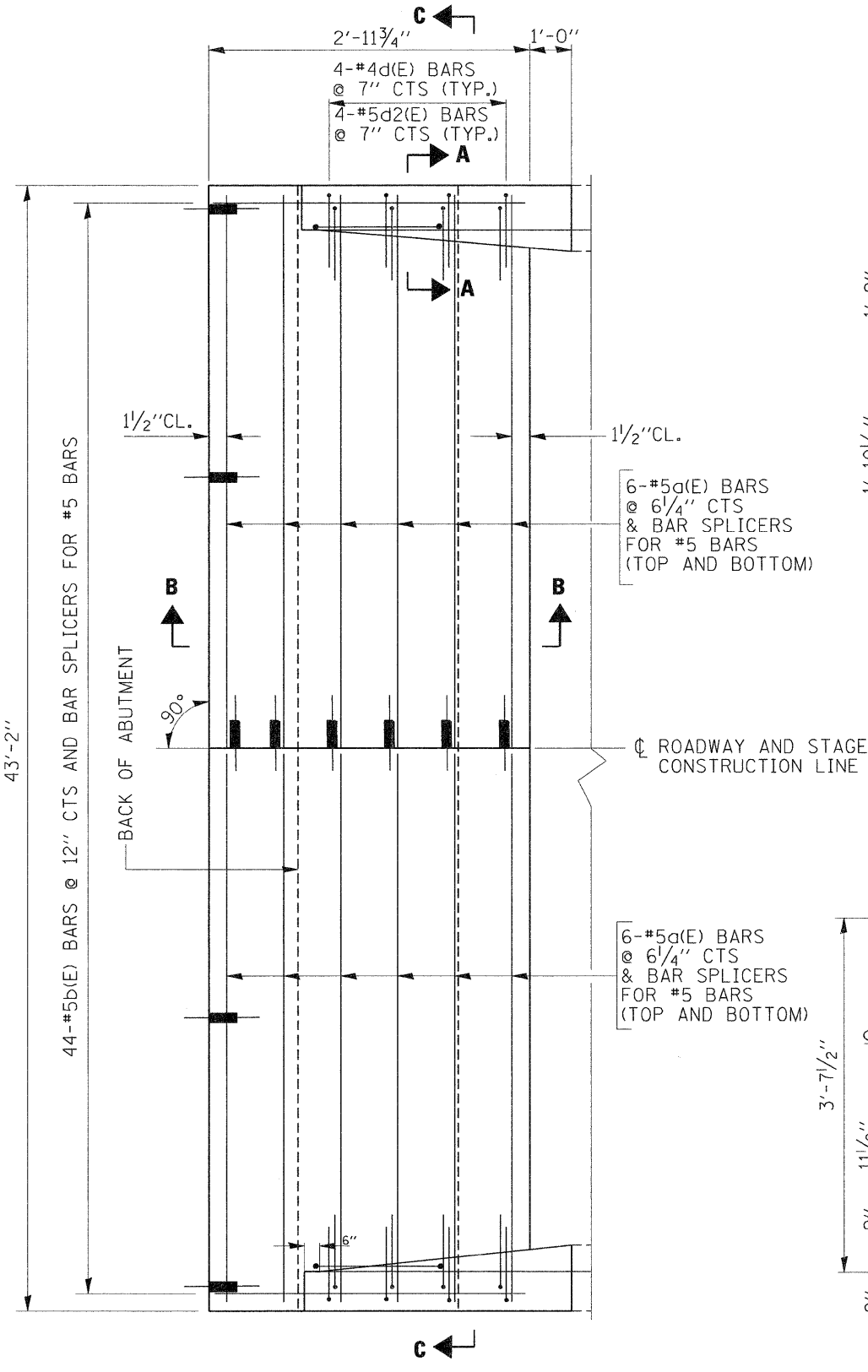
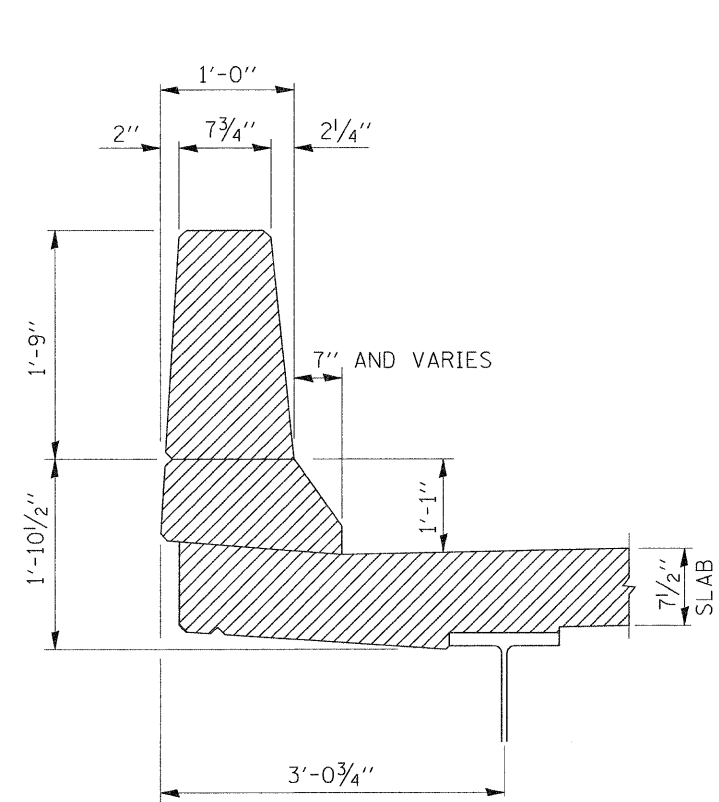


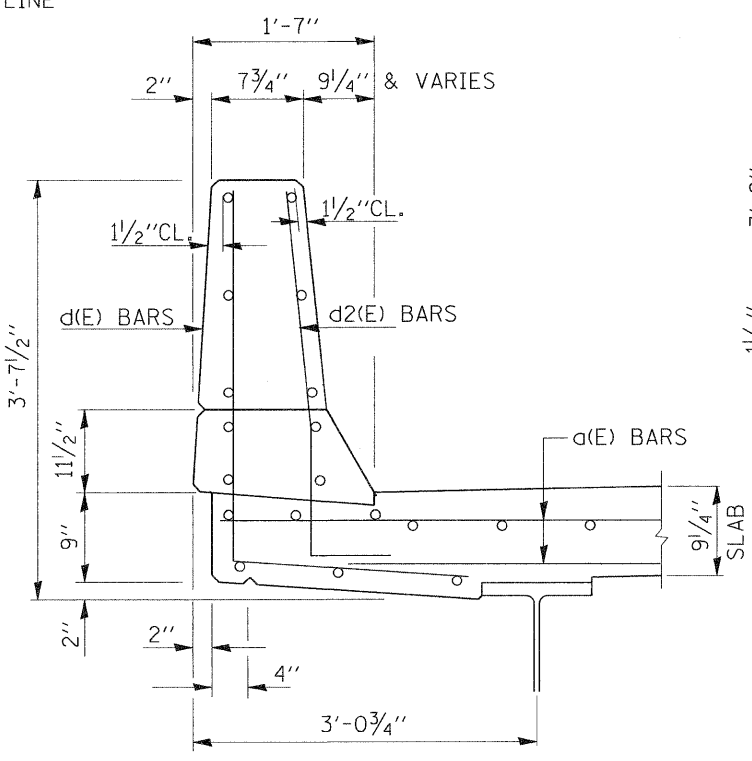
**EXPANSION JOINT PLAN
AT EAST AND WEST ABUTMENT**
(CONCRETE REMOVAL)



**CONCRETE REPLACEMENT PLAN
AT EAST AND WEST
INTEGRAL ABUTMENT**

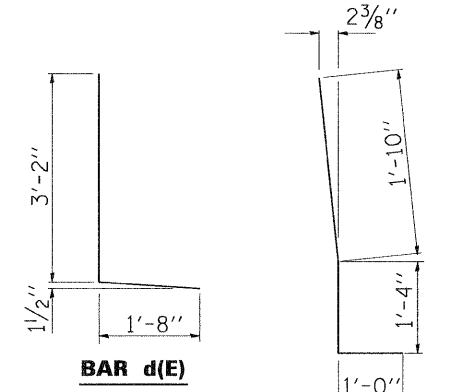


**SECTION A-A
(EXISTING)**

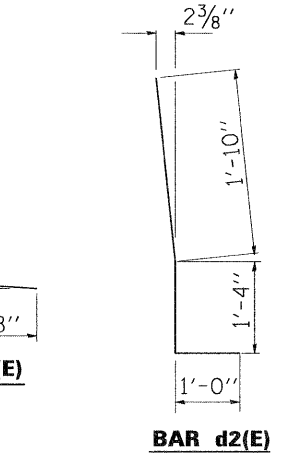


**SECTION A-A
(PROPOSED)**

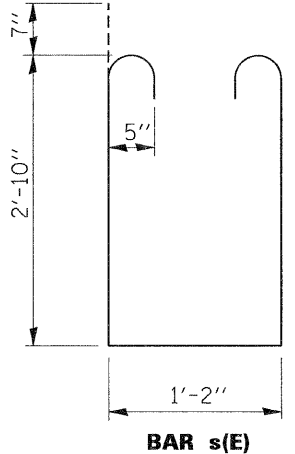
BILL OF MATERIALS				
BAR	NO.	SIZE	LENGTH	SHARE
d(E)	48	#5	23'-7"	—
b(E)	88	#5	2'-8"	—
d(E)	16	#4	4'-10"	L
d2(E)	16	#5	4'-2"	L
m(E)	32	#6	7'-4"	—
m1(E)	8	#6	23'-6"	—
m2(E)	8	#6	21'-2"	—
v(E)	164	#5	3'-5"	—
v1(E)	82	#5	2'-1"	—
s(E)	82	#4	8'-0"	□
x(E)	4	#5	3'-0"	—
REINFORCEMENT BARS (EPOXY COATED)			POUND	3680
CONCRETE REMOVAL			CU.YD	9.8
CONCRETE SUPERSTRUCTURE			CU.YD	21.8
BAR SPLICERS			EACH	112



BAR d(E)



BAR d2(E)



BAR s(E)