

STATE OF ILLINOIS
DEPARTMENT OF TRANSPORTATION

F.A.I. RTE.	SECTION	COUNTY	TOTAL SHEETS	SHEET NO.
**	D9 BRIDGE REPAIR 2022-3	*	17	1
		ILLINOIS	CONTRACT NO. 78895	
**FAI 57/FA5 2826			*WILLIAMSON/JEFFERSON	

FOR INDEX OF SHEETS, SEE SHEET NO. 3
FOR SUMMARY OF QUANTITIES, SEE SHEET NO. 4-5

**PROPOSED
HIGHWAY PLANS**

F.A.I 57 (I-57)
F.A.S. 2826 (IL 37)
SECTION BRIDGE REPAIR 2022-3
PROJECT
BRIDGE REPAIRS
WILLIAMSON COUNTY
JEFFERSON COUNTY
C-99-094-21

TRAFFIC DATA

CEDAR GROVE ROAD
2016 ADT = 1,550 (SN 100-0054)
WITH 2.84% TRUCKS
I-57
2020 ADTTWO WAY = 34,800 (SN 100-0054)
WITH 36% TRUCKS
IL 37
2019 ADT = 4,550 (SN 041-0032)
WITH 6.59% TRUCKS

TOWNSHIPS

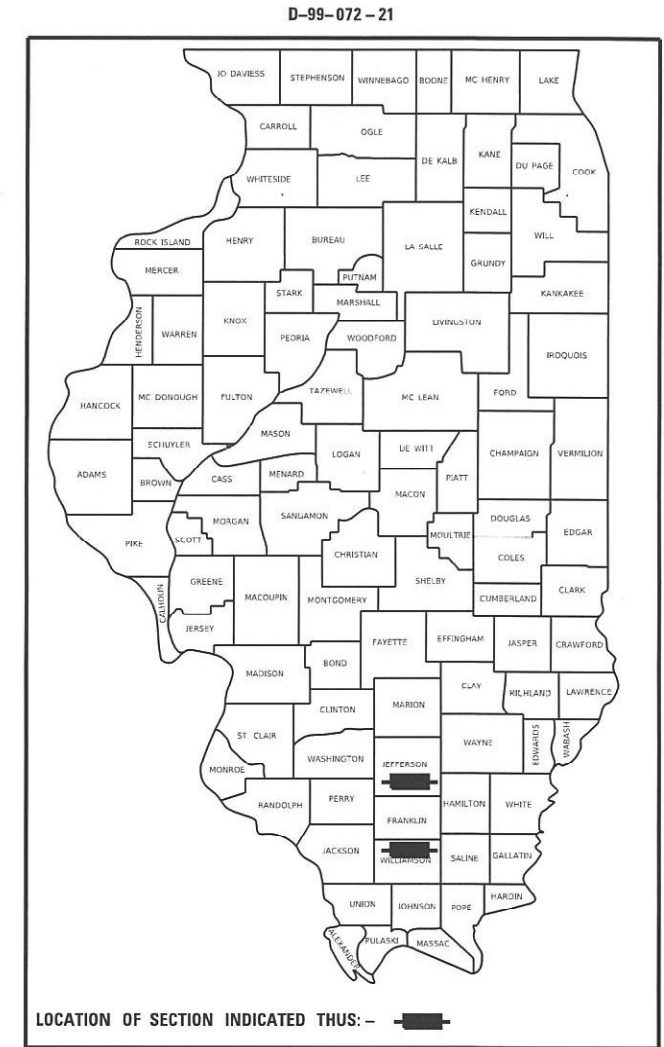
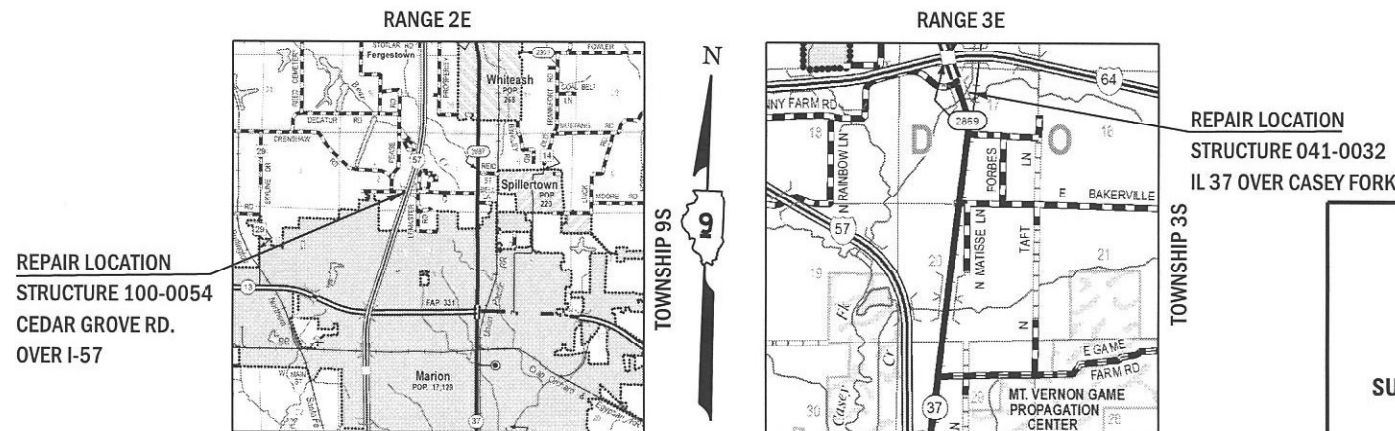
WILLIAMSON CO. UNIT ROAD DISTRICT (SN 100-0054)
DODDS (SN 041-0032)

POSTED SPEED : 40 MPH (SN 100-0054)
POSTED SPEED : 55 MPH (SN 041-0032)

J.U.L.I.E.
JOINT UTILITY LOCATION INFORMATION FOR EXCAVATION
1-800-892-0123
OR 811

PROJECT ENGINEER: GRANT DETERDING
PROJECT DESIGNER: BRANDON HENK

CONTRACT NO. 78895



LOCATION OF SECTION INDICATED THUS: - [thick black line]

STATE OF ILLINOIS
DEPARTMENT OF TRANSPORTATION

SUBMITTED 11-29-2021
[Signature]
REGION FIVE ENGINEER

February 4, 2022
[Signature]
ENGINEER OF DESIGN AND ENVIRONMENT

February 4, 2022
[Signature]
DIRECTOR OF HIGHWAYS PROJECT IMPLEMENTATION 2

GROSS LENGTH = 251.5 FT. = 0.048 MILES (SN 100-0054)
NET LENGTH = 251.5 FT. = 0.048 MILES (SN 100-0054)
GROSS LENGTH = 385.01 FT. = 0.073 MILES (SN 041-0032)
NET LENGTH = 385.01 FT. = 0.073 MILES (SN 041-0032)

PRINTED BY THE AUTHORITY
OF THE STATE OF ILLINOIS

MODEL: S:\MODEL\NAMES
FILE NAME: SFILEL5

USER NAME = SUSERS	DESIGNED - _____	REVISED - _____
	DRAWN - _____	REVISED - _____
PLOT SCALE = SSCALE\$	CHECKED - _____	REVISED - _____
PLOT DATE = SDATES	DATE - _____	REVISED - _____

**STATE OF ILLINOIS
DEPARTMENT OF TRANSPORTATION**

SIGNATURES

SCALE: _____ SHEET _____ OF _____ SHEETS STA. _____ TO STA. _____

F.A.** RTE.	SECTION	COUNTY	TOTAL SHEETS	SHEET NO.
**	BRIDGE REPAIR 2022-3	*	17	2
CONTRACT NO. 78895				
ILLINOIS FED. AID PROJECT				

**FAI 57/FAS 2826

*WILLIAMSON/JEFFERSON

Prepared By: Charles Stein
DISTRICT STUDIES & PLANS ENGINEER

Examined By: Nancy Lee
DISTRICT LAND ACQUISITION ENGINEER

Examined By: Carrie Nelson
DISTRICT PROGRAM DEVELOPMENT ENGINEER

Examined By: [Signature]
DISTRICT OPERATIONS ENGINEER

Examined By: [Signature]
DISTRICT PROJECT IMPLEMENTATION ENGINEER

Examined By: Douglas Hillier
DISTRICT CONSTRUCTION ENGINEER

Examined By: [Signature]
DISTRICT MATERIALS ENGINEER

GENERAL NOTES

1) FACTORS USED FOR ESTIMATING PLAN QUANTITIES ARE AS FOLLOWS AND SHALL NOT BE USED FOR THE BASIS OF FINAL QUANTITIES:

ALL HOT MIX ASPHALT 2.016 TONS/CU YD
 BITUMINOUS MATERIALS: 0.05 LB/SQ FT
 ON PAVEMENT

COMMITMENTS

NONE

MIXTURE REQUIREMENTS

The following HMA mixture requirements are applicable for this project:

Location(s):	Hot-Mix Asphalt Surface Course
Mixture Use(s):	Hot-Mix Asphalt Surface Course, Mix C, N70, Fine Graded
AC/PG:	PG64-22
ABR % (Max):	See Special Provision
Design Air Voids:	4.0 %, 70 Gyration Design
Mixture Composition: (Gradation Mixture)	IL-9.5 mm Fine Graded
Friction Aggregate:	C Surface
Mixture Weight:	112 lbs/Sq. Yd/in
Quality Management Program:	QCQA
Sublot Size:	N/A
Material Transfer Device (Required?)	No

INDEX OF SHEETS

1	COVER SHEET
2	SIGNATURES
3	GENERAL NOTES, INDEX OF SHEETS, STANDARDS, AND COMMITMENTS
4	SUMMARY OF QUANTITIES
5	SUMMARY OF QUANTITIES
6	SCHEDULES
7	GENERAL PLAN AND ELEVATION - SN 100-0054
8	TYPICAL CROSS SECTION & DETAIL - SN 100-0054
9	JOINT DETAILS - SN 100-0054
10	BUTT JOINT DETAILS - SN 100-0054
11	GENERAL PLAN AND ELEVATION - SN 041-0032
12	STAGING DETAILS & TYPICAL CROSS SECTION - SN 041-0032
13	APPROACH SLAB REPAIR - SN 041-0032
14	NORTH ABUT. & PIER 1 DETAILS - SN 041-0032
15	PIER 3 DETAILS - SN 041-0032
16	PIER 6 DETAILS - SN 041-0032
17	PIER 5 & PIER 7 DETAILS - SN 041-0032

STANDARDS

000001-08	STANDARD SYMBOLS, ABBREVIATIONS AND PATTERNS
001006	DECIMAL OF AN INCH AND OF A FOOT
701001-02	OFF-ROAD OPERATIONS, 2L, 2W, MORE THAN 15' (4.5M) AWAY
701006-05	OFF-ROAD OPERATIONS, 2L, 2W, 15' (4.5 M) TO 24" (600 MM) FROM PAVEMENT EDGE
701011-04	OFF-ROAD OPERATIONS, 2L, 2W, DAY ONLY
701301-04	LANE CLOSURE, 2L, 2W, SHORT TIME OPERATIONS
701311-03	LANE CLOSURE, 2L, 2W, MOVING OPERATIONS - DAY ONLY
701316-13	LANE CLOSURE, 2L, 2W, BRIDGE REPAIR FOR SPEEDS > 45 MPH
701901-08	TRAFFIC CONTROL DEVICES
780001-05	TYPICAL PAVEMENT MARKINGS
862001-01	UNINTERRUPTIBLE POWER SUPPLY
B.L.R 21-9	TYPICAL APPLICATION OF TRAFFIC CONTROL DEVICES FOR CONSTRUCTION ON RURAL LOCAL HIGHWAYS

MODEL NUMBER: MAMES
 FILE NAME: 811215

USER NAME = SUSERS	DESIGNED - _____	REVISED - _____
	DRAWN - _____	REVISED - _____
PLOT SCALE = SCALES	CHECKED - _____	REVISED - _____
PLOT DATE = SDATES	DATE - _____	REVISED - _____

**STATE OF ILLINOIS
 DEPARTMENT OF TRANSPORTATION**

**GENERAL NOTES, INDEX OF SHEETS,
 STANDARDS, AND COMMITMENTS**

SCALE: _____ SHEET ____ OF ____ SHEETS STA. _____ TO STA. _____

F.A. ** RTE.	SECTION	COUNTY	TOTAL SHEETS	SHEET NO.
**	Bridge Repair 2022-3	*	17	3
			CONTRACT NO. 78895	
		ILLINOIS	FED. AID PROJECT	

**FAI 57/FA5 2826

*Williamson/Jefferson

SUMMARY OF QUANTITIES

COUNTY:	WILLIAMSON CO	JEFFERSON CO
ROUTE:	FAI 57	FAS 2826
FUNDING:	100% STATE	100% STATE
LOCATION:	SN 100-0054	SN 041-0032
	CONSTRUCTION CODE 0013	CONSTRUCTION CODE 0013

CODE NUMBER	ITEM DESCRIPTION	UNIT	TOTAL QUANTITY	CONSTRUCTION CODE 0013	CONSTRUCTION CODE 0013
40600290	BITUMINOUS MATERIALS (TACK COAT)	POUND	374	374	0
40600982	HOT-MIX ASPHALT SURFACE REMOVAL - BUTT JOINT	SQ YD	160	160	0
40604002	HOT-MIX ASPHALT SURFACE COURSE, IL-9.5FG, MIX "C", N70	TON	92	92	0
67000400	ENGINEER'S FIELD OFFICE, TYPE A	CAL MO	2	1	1
67100100	MOBILIZATION	L SUM	1	0.5	0.5
70100100	TRAFFIC CONTROL AND PROTECTION, STANDARD 701316	EACH	1	0	1
70106500	TEMPORARY BRIDGE TRAFFIC SIGNALS	EACH	1	0	1
70106700	TEMPORARY RUMBLE STRIPS	EACH	6	0	6
70107025	CHANGEABLE MESSAGE SIGN	CAL DA	56	28	28
* 78001130	PAINT PAVEMENT MARKING - LINE 6"	FOOT	664	664	0
* 86200300	UNINTERRUPTABLE POWER SUPPLY, EXTENDED	EACH	1	0	1
X7011800	TRAFFIC CONTROL AND PROTECTION, STANDARD BLR 21	L SUM	1	1	0
Z0001800	APPROACH SLAB REPAIR (PARTIAL DEPTH)	SQ YD	29	0	29
Z0012754	STRUCTURAL REPAIR OF CONCRETE (DEPTH EQUAL TO OR LESS THAN 5 INCHES)	SQ FT	128	0	128

* SPECIALTY ITEM

MODEL NUMBER: MAMES
FILE NAME: 811215

USER NAME = SUSERS	DESIGNED - _____	REVISED - _____
	DRAWN - _____	REVISED - _____
PLOT SCALE = 5SCALES	CHECKED - _____	REVISED - _____
PLOT DATE = 5DATES	DATE - _____	REVISED - _____

**STATE OF ILLINOIS
DEPARTMENT OF TRANSPORTATION**

SUMMARY OF QUANTITIES

SCALE: _____ SHEET ____ OF ____ SHEETS STA. _____ TO STA. _____

F.A. ** RTE.	SECTION	COUNTY	TOTAL SHEETS	SHEET NO.
**	Bridge Repair 2022-3	*	17	4
			CONTRACT NO. 78895	
		ILLINOIS	FED. AID PROJECT	

**FAI 57/FAS 2826

*Williamson/Jefferson

SUMMARY OF QUANTITIES - CONT

COUNTY:	WILLIAMSON CO	JEFFERSON CO
ROUTE:	FAI 57	FAS 2826
FUNDING:	100% STATE	100% STATE
LOCATION:	SN 100-0054	SN 041-0032
	CONSTRUCTION CODE	CONSTRUCTION CODE
	0013	0013

CODE NUMBER	ITEM DESCRIPTION	UNIT	TOTAL QUANTITY
Z0021906	SILICONE JOINT SEALER, 1.5"	FOOT	63
Z0041895	POLYMER CONCRETE	CU FT	5.6
Z0073200	TEMPORARY SHORING AND CRIBBING	EACH	10

REV. - MS

MODEL NAME: MAM1ES
FILE NAME: 811E15

USER NAME = SUSERS	DESIGNED - _____	REVISED - _____	STATE OF ILLINOIS DEPARTMENT OF TRANSPORTATION	SUMMARY OF QUANTITIES			F.A. ** RTE.	SECTION	COUNTY	TOTAL SHEETS	SHEET NO.
PLOT SCALE = \$SCALES	DRAWN - _____	REVISED - _____		SCALE: _____	SHEET _____ OF _____ SHEETS	STA. _____ TO STA. _____	**	BRIDGE REPAIR 2022-3	*	17	5
PLOT DATE = \$DATES	CHECKED - _____	REVISED - _____					CONTRACT NO. 78895				
	DATE - _____	REVISED - _____					ILLINOIS FED. AID PROJECT				

**FAI 57/FAS 2826

*WILLIAMSON/JEFFERSON

PAVEMENT MARKING SCHEDULE							
STATION		NOTES			PAINT PAVEMENT MARKING - LINE 6"		
					SOILD WHITE	WHITE SKIP DASH	SOLID YELLOW
SN 100-0054					FOOT	FOOT	FOOT
8+34.00	RT TO	11+66.00	RT	ALONG CENTERLINE			332
8+34.00	LT TO	11+66.00	LT	ALONG CENTERLINE			332
SUBTOTAL							664
TOTAL					664		

MODEL NAME: MAMES
FILE NAME: 811215

USER NAME = SUSERS	DESIGNED - _____	REVISED - _____
	DRAWN - _____	REVISED - _____
PLOT SCALE = \$SCALES	CHECKED - _____	REVISED - _____
PLOT DATE = \$DATES	DATE - _____	REVISED - _____

**STATE OF ILLINOIS
DEPARTMENT OF TRANSPORTATION**

SCHEDULES

SCALE: _____ SHEET ___ OF ___ SHEETS STA. _____ TO STA. _____

F.A. RTE.	SECTION	COUNTY	TOTAL SHEETS	SHEET NO.
**	Bridge Repair 2022-3	*	17	6
			CONTRACT NO. 78895	

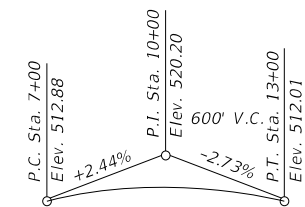
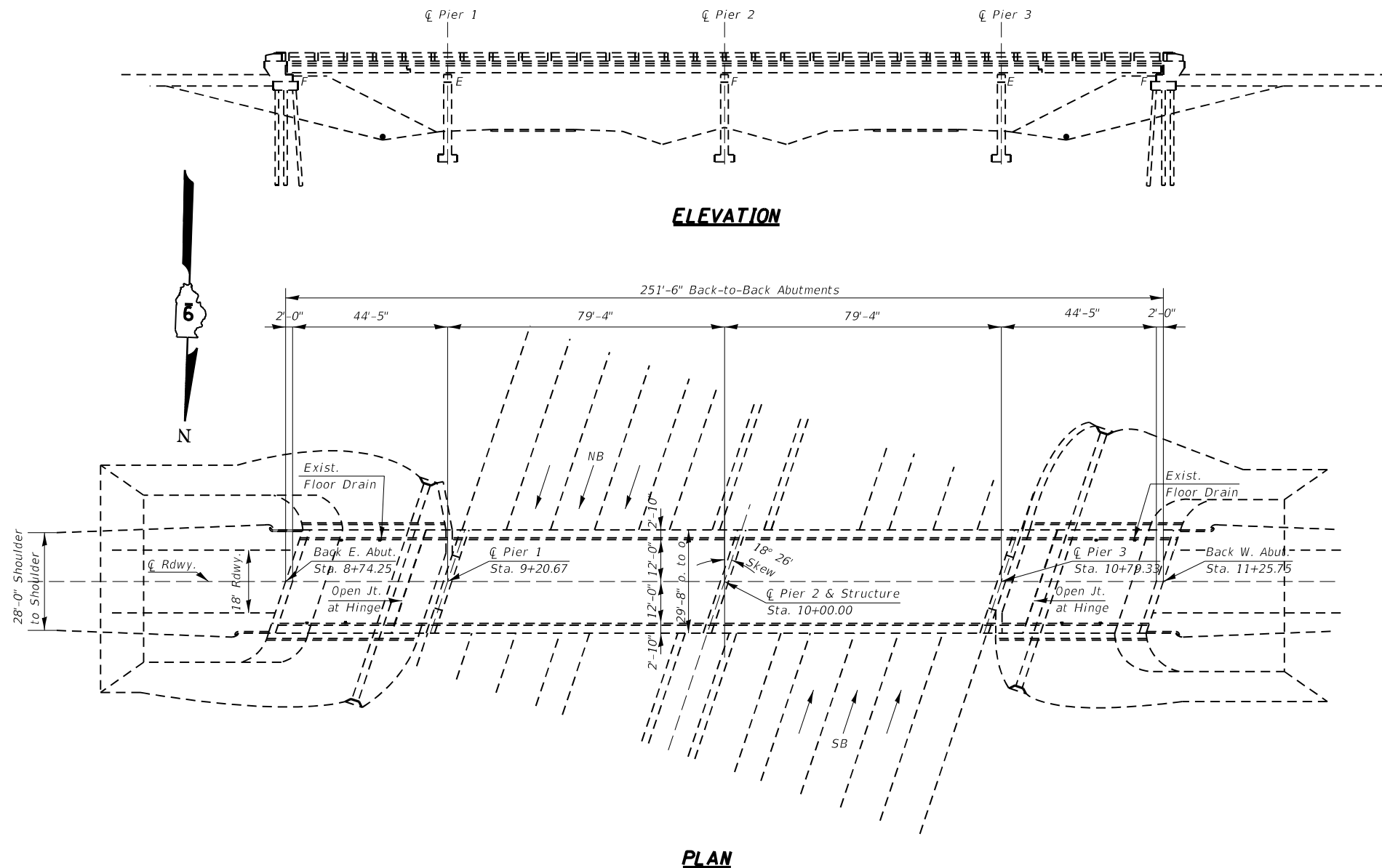
**FAI 57/FAS 2826

*Williamson/Jefferson

GENERAL NOTES

Plan dimensions and details relative to existing plans are subject to nominal construction variations. The Contractor shall field verify existing dimensions and details affecting new construction and make necessary approved adjustments prior to construction or ordering of materials. Such variations shall not be cause for additional compensation for a change in scope of the work, however, the Contractor will be paid for the quantity actually furnished at the unit price bid for the work.

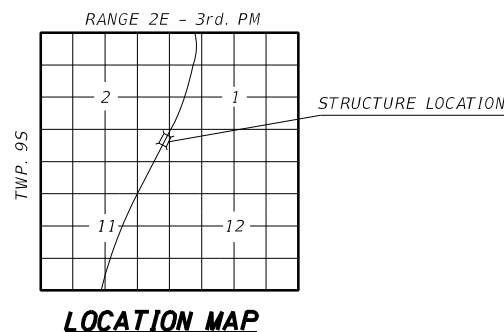
Joint openings shall be adjusted according to Article 520.04 of the Standard Specifications when the deck is poured at an ambient temperature other than 50°F.



CEDAR GROVE ROAD V.C. DATA

TOTAL BILL OF MATERIAL

Item	Unit	Total
Bituminous Materials (Tack Coat)	Pound	374
Hot-Mix Asphalt Surface Removal - Butt Joint	Sq Yd	160
Hot-Mix Asphalt Surface Course	Ton	92
Paint Pavement Marking - Line 6"	Foot	664
Silicone Joint Sealer, 1.5"	Foot	63
Polymer Concrete	Cu Ft	5.6



SCOPE OF WORK

1. Set up traffic control on Cedar Grove Road for road closure.
2. Perform joint work.
3. Install HMA overlay
4. Remove traffic control from Cedar Grove Road.

DESIGN STRESSES

(From Existing Plans)
 fc = 1,400 psi (Super and Sub)
 vc = 75 psi (Footings)
 fs = 18,000 psi (Structural)
 fs = 20,000 psi (Existing Reinforcement)
 n = 10



Expires 11-30-2022

David Carl Puze

01/25/2022

BRIDGE REPAIRS
CEDAR GROVE RD. OVER I-57
F.A.I. RTE 57 - D9 BRIDGE REPAIR 2022-3
WILLIAMSON COUNTY
STATION 10+00.00
STRUCTURE NO. 100-0054

MODEL NUMBER: MAMTMS
FILE NAME: 281215

USER NAME = SUSERS	DESIGNED - _____	REVISED - _____
PLOT SCALE = 5SCALES	DRAWN - _____	REVISED - _____
PLOT DATE = SDATES	CHECKED - _____	REVISED - _____
	DATE - _____	REVISED - _____

STATE OF ILLINOIS
DEPARTMENT OF TRANSPORTATION

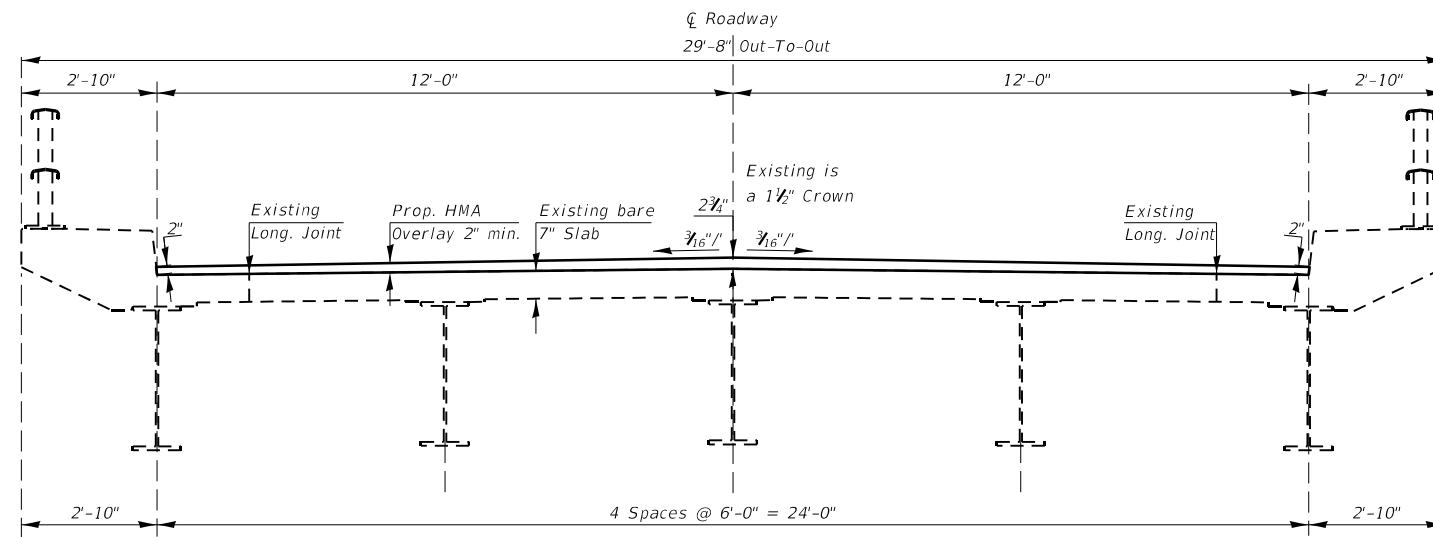
GENERAL PLAN AND ELEVATION
SN 100-0054

SCALE: _____ SHEET 1 OF 4 SHEETS STA. _____ TO STA. _____

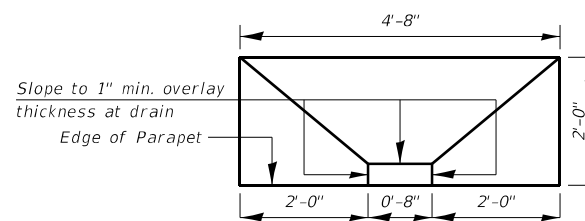
F.A. RTE.	SECTION	COUNTY	TOTAL SHEETS	SHEET NO.
**	Bridge Repair 2022-3	*	17	7
			CONTRACT NO. 78895	
		ILLINOIS	FED. AID PROJECT	

**FAI 57/FA5 2826

*Williamson/Jefferson



TYPICAL CROSS SECTION



TOP PLAN - SURFACE AT DRAINS

Slope HMA Overlay at Drains

TYPICAL CROSS SECTION & DETAIL
CEDAR GROVE RD. OVER I-57
F.A.I. RTE 57 - D9 BRIDGE REPAIR 2022-3
WILLIAMSON COUNTY
STATION 10+00.00
STRUCTURE NO. 100-0054

MODEL NUMBER: MAMES
 FILE NAME: 2022-3

USER NAME = SUSERS	DESIGNED - _____	REVISED - _____
	DRAWN - _____	REVISED - _____
PLOT SCALE = 5/SCALE\$	CHECKED - _____	REVISED - _____
PLOT DATE = \$DATES	DATE - _____	REVISED - _____

STATE OF ILLINOIS
DEPARTMENT OF TRANSPORTATION

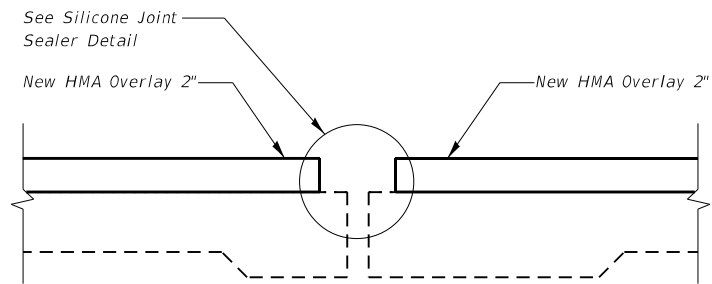
TYPICAL CROSS SECTION & DETAIL
SN 100-0054

SCALE: _____ SHEET 2 OF 4 SHEETS STA. _____ TO STA. _____

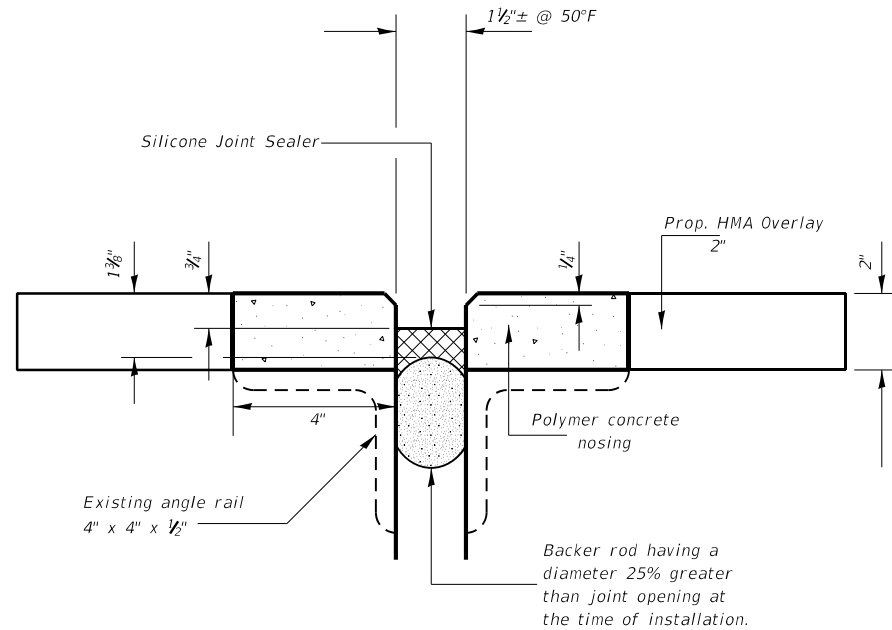
F.A. RTE. **	SECTION	COUNTY	TOTAL SHEETS	SHEET NO.
**	BRIDGE REPAIR 2022-3	*	17	8
			CONTRACT NO. 78895	

**FAI 57/FA5 2826

*WILLIAMSON/JEFFERSON



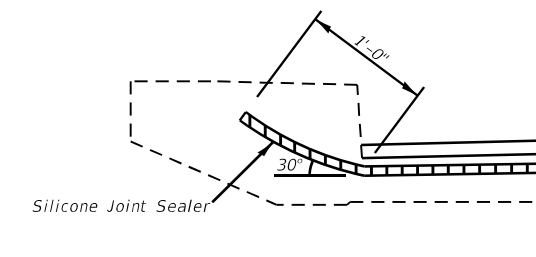
SECTION JOINTS NEAR PIERS 1 & 3



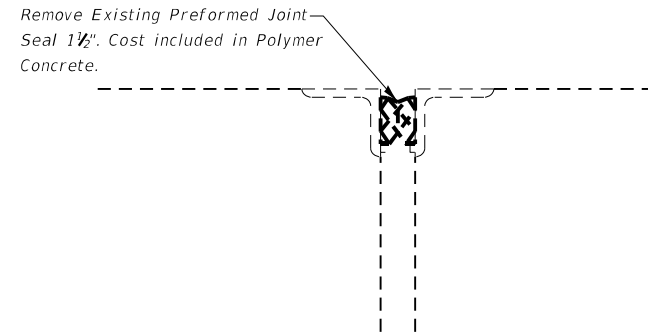
SILICONE JOINT SEALER DETAIL

All welds shall be ground smooth from the existing angles prior to placing the polymer concrete.

Any broken or loose angle pieces shall be removed and the polymer nosing shall be bonded to the concrete.



TYPICAL END OF SEAL TREATMENT AT EXPANSION JOINT



EXISTING JOINTS NEAR PIERS 1 & 3

BILL OF MATERIAL

Item	Unit	Total
Silicone Joint Sealer, 1.5"	Foot	63
Polymer Concrete	Cu Ft	5.6

JOINT DETAILS
CEDAR GROVE RD. OVER I-57
F.A.I. RTE 57 - D9 BRIDGE REPAIR 2022-3
WILLIAMSON COUNTY
STATION 10+00.00
STRUCTURE NO. 100-0054

MODEL NUMBER: MAM1ES
 FILE NAME: 211215

USER NAME = SUSERS	DESIGNED - _____	REVISED - _____
PLOT SCALE = 5/8"=1'-0"	CHECKED - _____	REVISED - _____
PLOT DATE = 5/20/2022	DATE - _____	REVISED - _____

STATE OF ILLINOIS
DEPARTMENT OF TRANSPORTATION

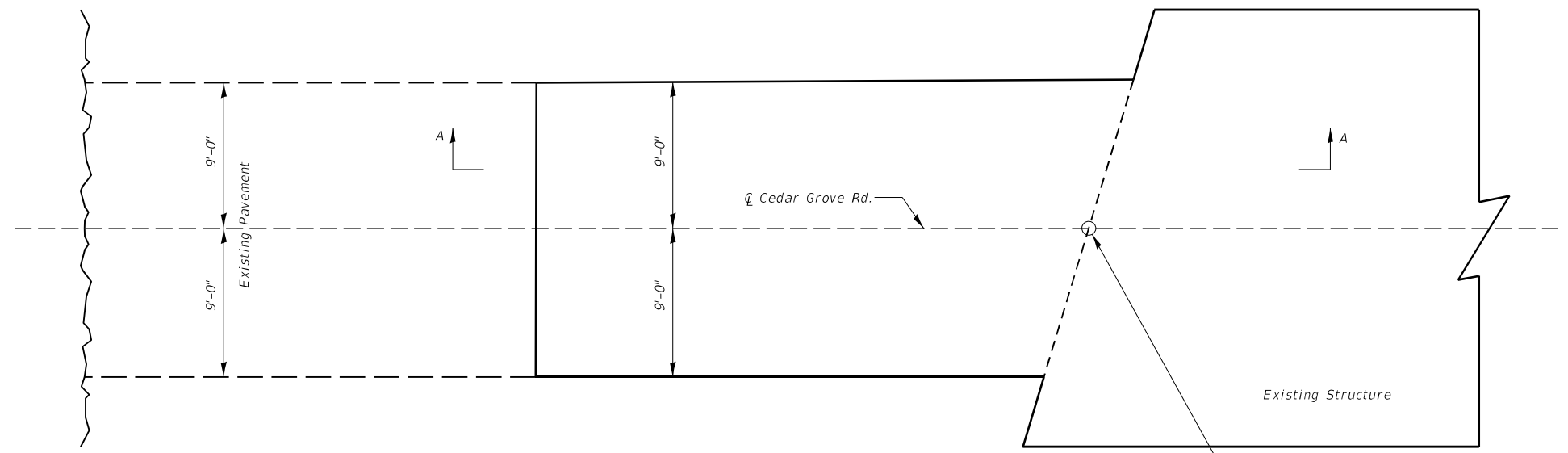
JOINT DETAILS
SN 100-0054

SCALE: _____ SHEET 3 OF 4 SHEETS STA. _____ TO STA. _____

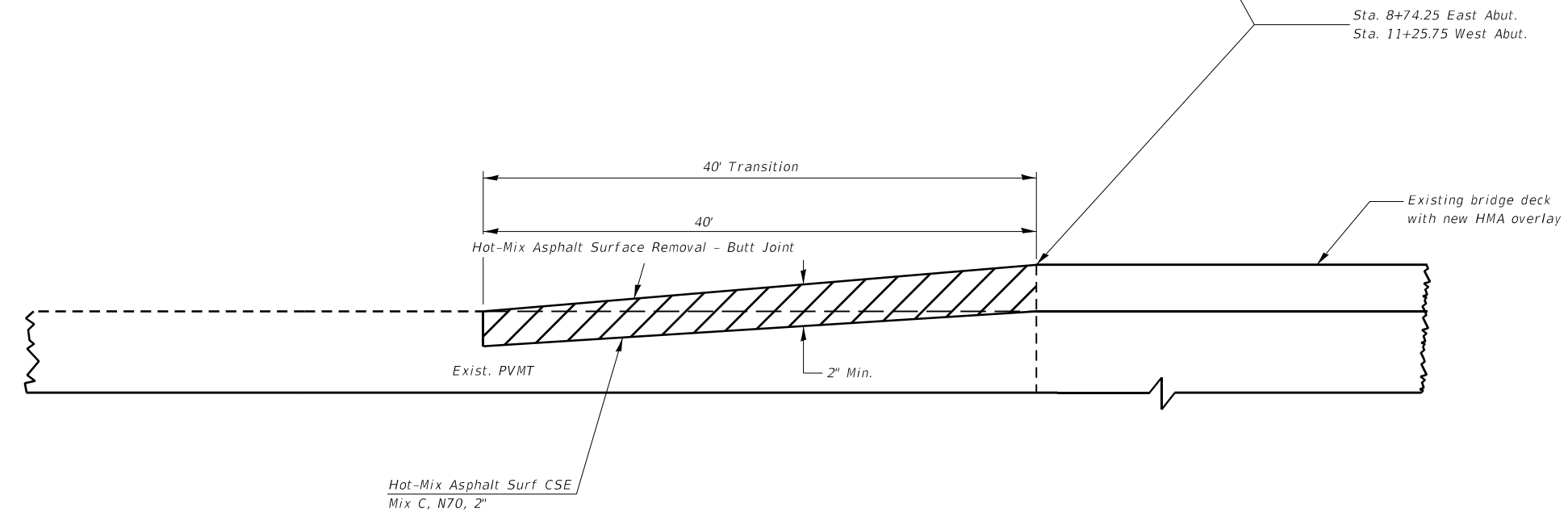
F.A. RTE. **	SECTION	COUNTY	TOTAL SHEETS	SHEET NO.
**	BRIDGE REPAIR 2022-3	*	17	9
			CONTRACT NO. 78895	

**FAI 57/FA5 2826

*WILLIAMSON/JEFFERSON



PLAN



SECTION A-A

BUTT JOINT DETAILS
CEDAR GROVE RD. OVER I-57
F.A.I. RTE 57 - D9 BRIDGE REPAIR 2022-3
WILLIAMSON COUNTY
STATION 10+00.00
STRUCTURE NO. 100-0054

MODEL NUMBER: MAM165
 FILE NAME: 20220315

USER NAME = SUSERS	DESIGNED - _____	REVISED - _____
DRAWN - _____	REVISIONS - _____	REVISIONS - _____
PLOT SCALE = 5/8"=1'-0"	CHECKED - _____	REVISIONS - _____
PLOT DATE = 5/24/2022	DATE - _____	REVISIONS - _____

STATE OF ILLINOIS
DEPARTMENT OF TRANSPORTATION

BUTT JOINT DETAILS
SN 100-0054

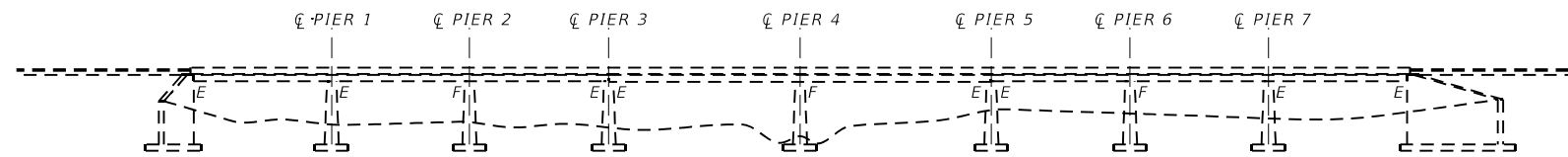
SCALE: _____ SHEET 4 OF 4 SHEETS STA. _____ TO STA. _____

F.A. RTE.	SECTION	COUNTY	TOTAL SHEETS	SHEET NO.
**	BRIDGE REPAIR 2022-3	*	17	10
ILLINOIS FED. AID PROJECT			CONTRACT NO. 78895	

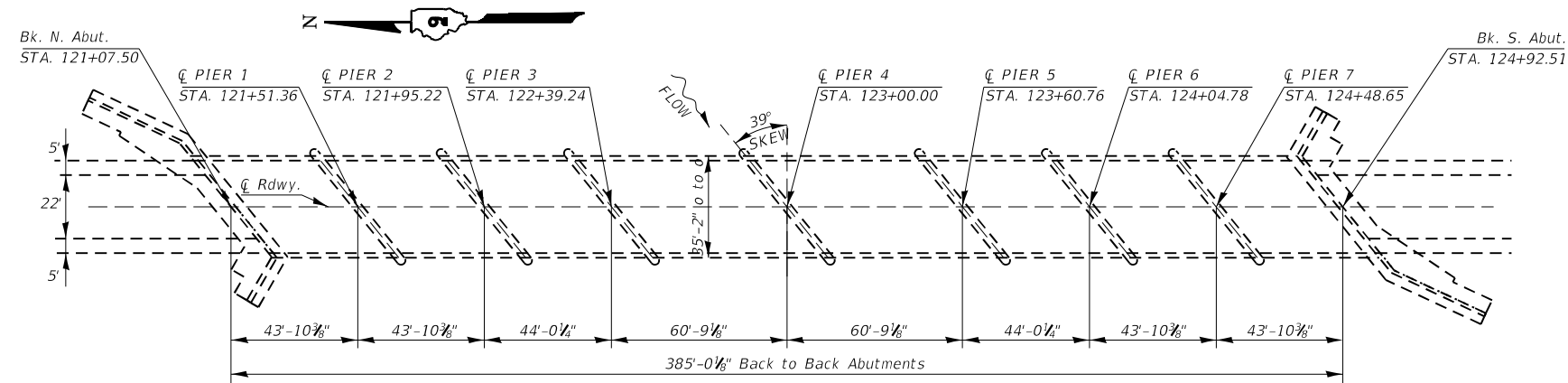
**FAI 57/FA5 2826 WILLIAMSON/JEFFERSON

GENERAL NOTES

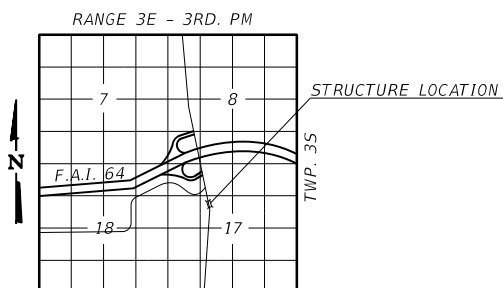
Plan dimensions and details relative to existing plans are subject to nominal construction variations. The Contractor shall field verify existing dimensions and details affecting new construction and make necessary approved adjustments prior to construction or ordering of materials. Such variations shall not be cause for additional compensation for a change in scope of the work, however, the Contractor will be paid for the quantity actually furnished at the unit price bid for the work.



ELEVATION



PLAN



LOCATION MAP

SCOPE OF WORK

1. Perform Approach Slab Repairs (Partial Depth)
2. Concrete repairs at Pier 1, 3, 5, 6, 7 and North Abut.

DESIGN STRESSES

(From Existing Plans)
 $f'_c = 3500$ psi
 $f_y = 60,000$ psi (reinforcement)
 $f_y = 50,000$ psi (Struct. Steel M 223 Grade 50 new Steel)
 $f_y = 36,000$ psi (M183 Steel)
 $f_y = 33,000$ psi (Exist.)



Expires 11-30-2022

David Carl Puzey

01/25/2022

*** Beam Reactions**

R DL = 25.7 kips
 R LL = 33.9 kips
 R Imp = 9.2 kips
 R tot = 68.8 kips

TOTAL BILL OF MATERIAL

Item	Unit	Total
Structural Repair of Concrete ($\leq 5"$)	Sq Ft	128
Approach Slab Repair (Partial Depth)	Sq Yd	29
* Temporary Shoring and Cribbing	Each	10

GENERAL PLAN
IL 37 OVER CASEY FORK
F.A.S. 2826 - D9 BRIDGE REPAIR 2022-3
JEFFERSON COUNTY
STATION 123+00.00
STRUCTURE NO. 041-0032

MODEL NUMBER: MAM16
 FILE NAME: 012522

USER NAME = SUSERS	DESIGNED - _____	REVISED - _____
PLOT SCALE = 5SCALES	DRAWN - _____	REVISED - _____
PLOT DATE = SDATES	CHECKED - _____	REVISED - _____
	DATE - _____	REVISED - _____

STATE OF ILLINOIS
DEPARTMENT OF TRANSPORTATION

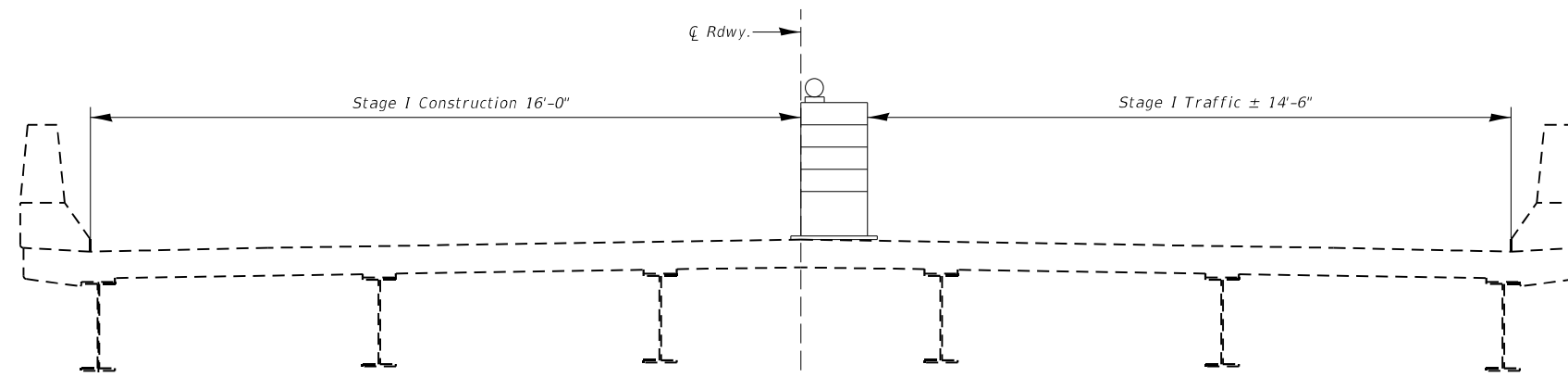
GENERAL PLAN AND ELEVATION
SN 041-0032

SCALE: _____ SHEET 1 OF 7 SHEETS STA. _____ TO STA. _____

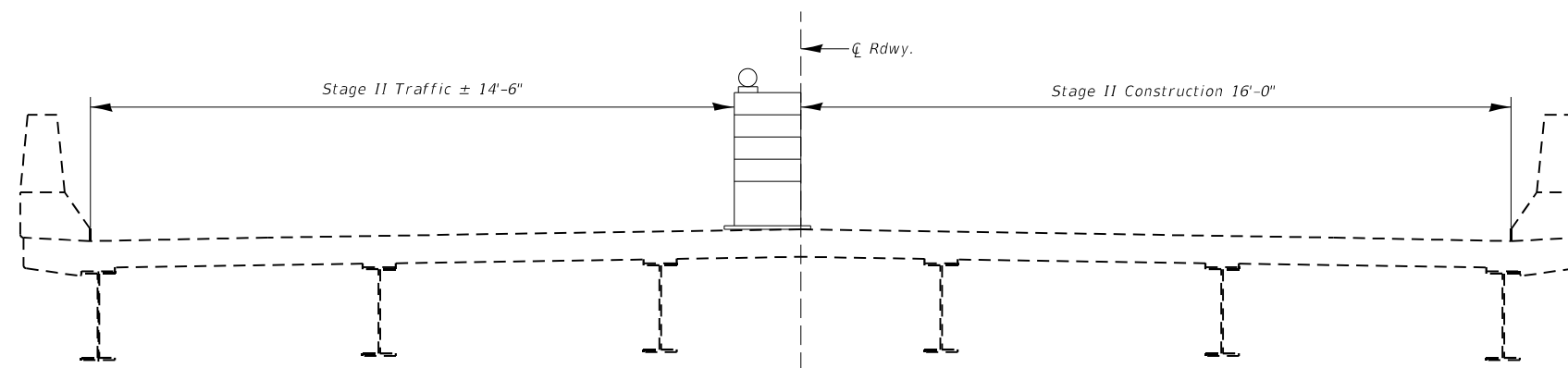
F.A. ** RTE.	SECTION	COUNTY	TOTAL SHEETS	SHEET NO.
**	BRIDGE REPAIR 2022-3	*	17	11
ILLINOIS FED. AID PROJECT			CONTRACT NO. 78895	

**FAI 57/FA5 2826

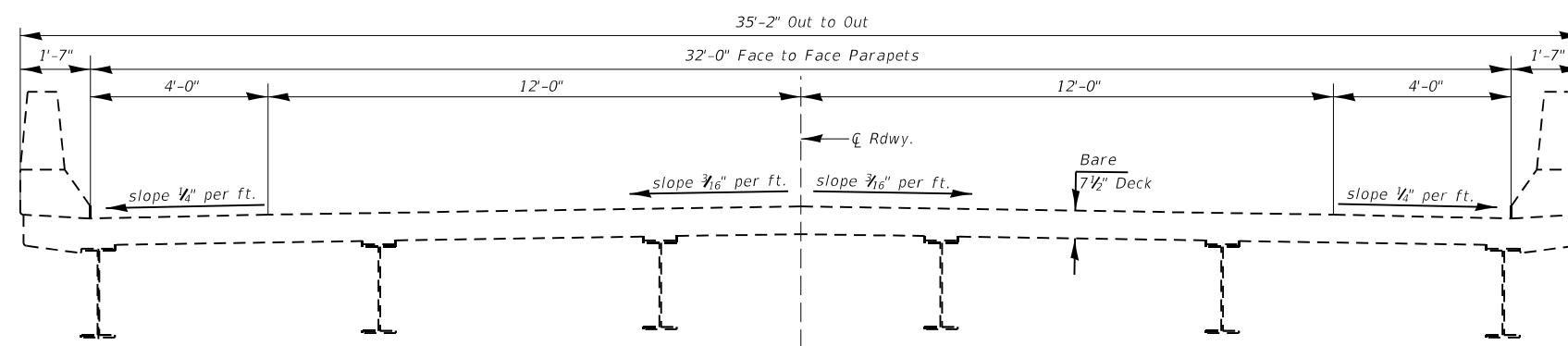
*WILLIAMSON/JEFFERSON



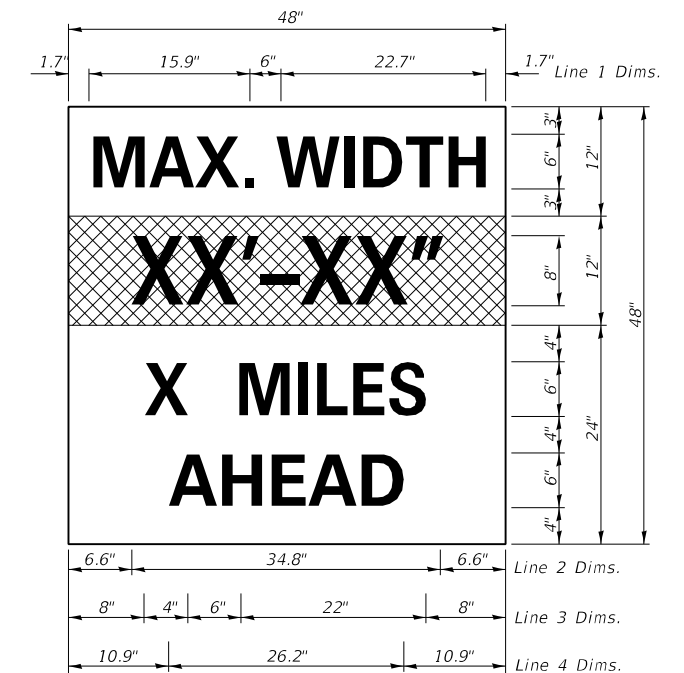
STAGE I CONSTRUCTION



STAGE II CONSTRUCTION



TYPICAL CROSS SECTION



W12-1103

W12-1103, No Border
 "MAX WIDTH" 6D, No Border, Black on White
 "XX'-XX'" 8D, No Border, Black on Orange
 "X MILES" 6D, No Border, Black on White
 "AHEAD" 6D, No Border, Black on White

Notes for Max Width Sign

1. Install a Max Width Sign each direction on IL 37 to give traffic approaching work zone enough advance notice to change routes if needed. Exact locations as directed by the Engineer.
2. The Contractor shall furnish the posts and erect the signs at the locations directed by the Engineer. All signs shall be post mounted.
3. The noted work, including signs, posts, hardware and labor shall be included in the contract unit price, each, for Traffic Control and Protection Standard 701316. No other compensation will be allowed.
4. The width shown on the W12-1103 sign shall be 18" less than what is shown in the staged lane widths or as directed by the Engineer.
5. The "X" MILES AHEAD will be determined by the Engineer.

STAGING DETAILS
IL 37 OVER CASEY FORK
F.A.S. 2826 - D9 BRIDGE REPAIR 2022-3
JEFFERSON COUNTY
STATION 123+00.00
STRUCTURE NO. 041-0032

MODEL NUMBER: MAM165
 FILE NAME: 2826.DWG

USER NAME = SUSERS	DESIGNED - _____	REVISED - _____
DRAWN - _____	REVISIONS - _____	REVISIONS - _____
PLOT SCALE = SSCALES	CHECKED - _____	REVISIONS - _____
PLOT DATE = SDATES	DATE - _____	REVISIONS - _____

STATE OF ILLINOIS
DEPARTMENT OF TRANSPORTATION

STAGING DETAILS & TYPICAL CROSS SECTION
SN 041-0032

SCALE: _____ SHEET 2 OF 7 SHEETS STA. _____ TO STA. _____

F.A. RTE.	SECTION	COUNTY	TOTAL SHEETS	SHEET NO.
**	BRIDGE REPAIR 2022-3	*	17	12
			CONTRACT NO. 78895	

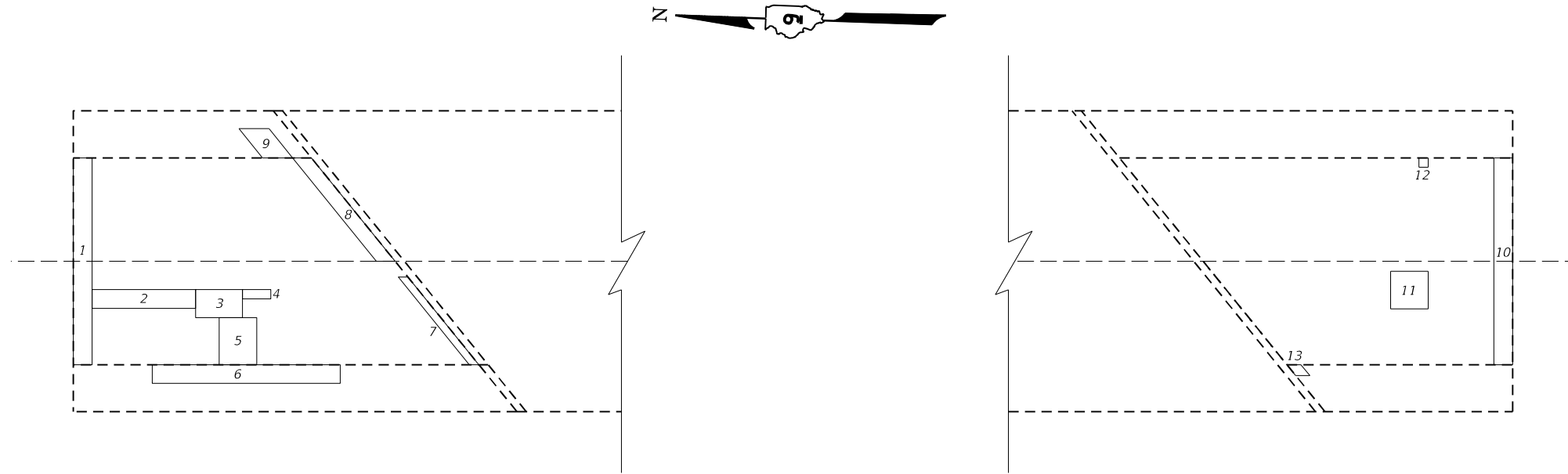
**FAI 57/FA5 2826

**WILLIAMSON/JEFFERSON

NOTES

The resident engineer will determine final patch locations and quantities in the field before bridge deck patching operations begin.

Area of repairs shown are estimates. The engineer shall show actual locations for deck repairs on as-built plans.



PLAN

APPROACH SLAB REPAIR

PATCH NO.	LENGTH	WIDTH	AREA
1	2'	22'	44 Sq Ft
2	11'	2'	22 Sq Ft
3	5'	3'	15 Sq Ft
4	3'	1'	3 Sq Ft
5	4'	5'	20 Sq Ft
6	20'	2'	40 Sq Ft
7	1'	12'	12 Sq Ft
8	2'	14'	28 Sq Ft
9	4'	4'	16 Sq Ft
10	2'	22'	44 Sq Ft
11	4'	4'	16 Sq Ft
12	1'	1'	1 Sq Ft
13	1.5'	1.5'	2 Sq Ft
Subtotal			263 Sq Ft
Total			29 Sq Yd

BILL OF MATERIAL

Item	Unit	Total
Approach Slab Repair (Partial Depth)	Sq Yd	29

APPROACH SLAB REPAIR
IL 37 OVER CASEY FORK
F.A.S. 2826 - D9 BRIDGE REPAIR 2022-3
JEFFERSON COUNTY
STATION 123+00.00
STRUCTURE NO. 041-0032

MODEL NUMBER: MAM1ES
 FILE NAME: 01E1US

USER NAME = SUSERS	DESIGNED - _____	REVISED - _____
	DRAWN - _____	REVISED - _____
PLOT SCALE = 5SCALES	CHECKED - _____	REVISED - _____
PLOT DATE = SDATES	DATE - _____	REVISED - _____

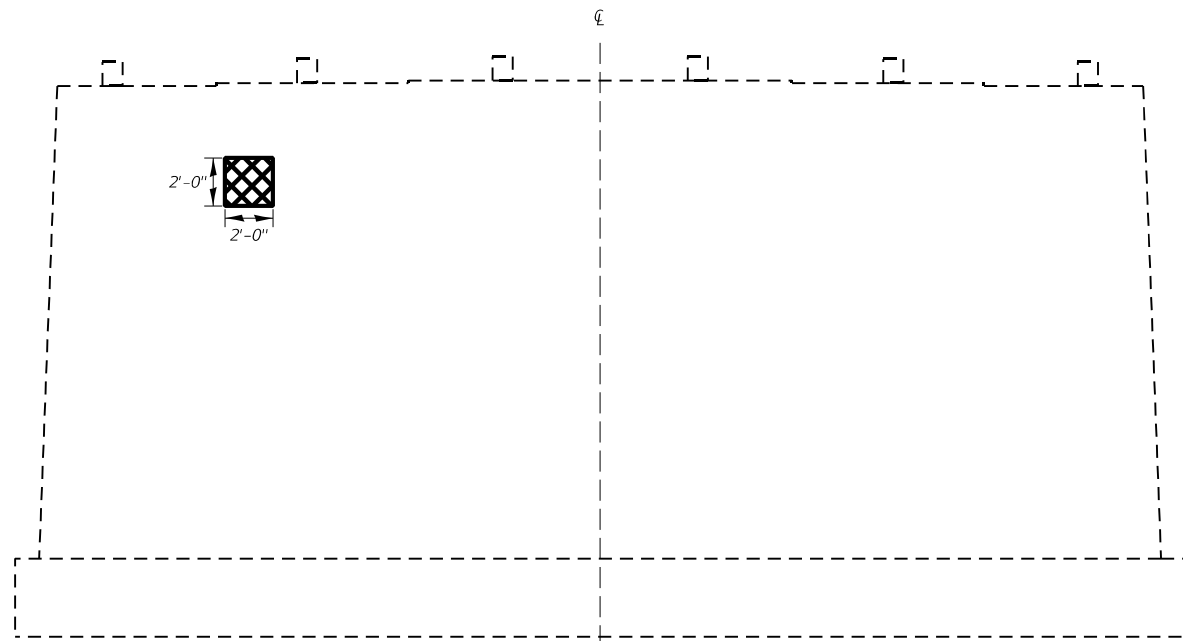
STATE OF ILLINOIS
DEPARTMENT OF TRANSPORTATION

APPROACH SLAB REPAIR			
SN 041-0032			
SCALE: _____	SHEET 3	OF 7 SHEETS	STA. _____ TO STA. _____

F.A. ** RTE.	SECTION	COUNTY	TOTAL SHEETS	SHEET NO.
**	BRIDGE REPAIR 2022-3	*	17	13
			CONTRACT NO. 78895	
ILLINOIS		FED. AID PROJECT		

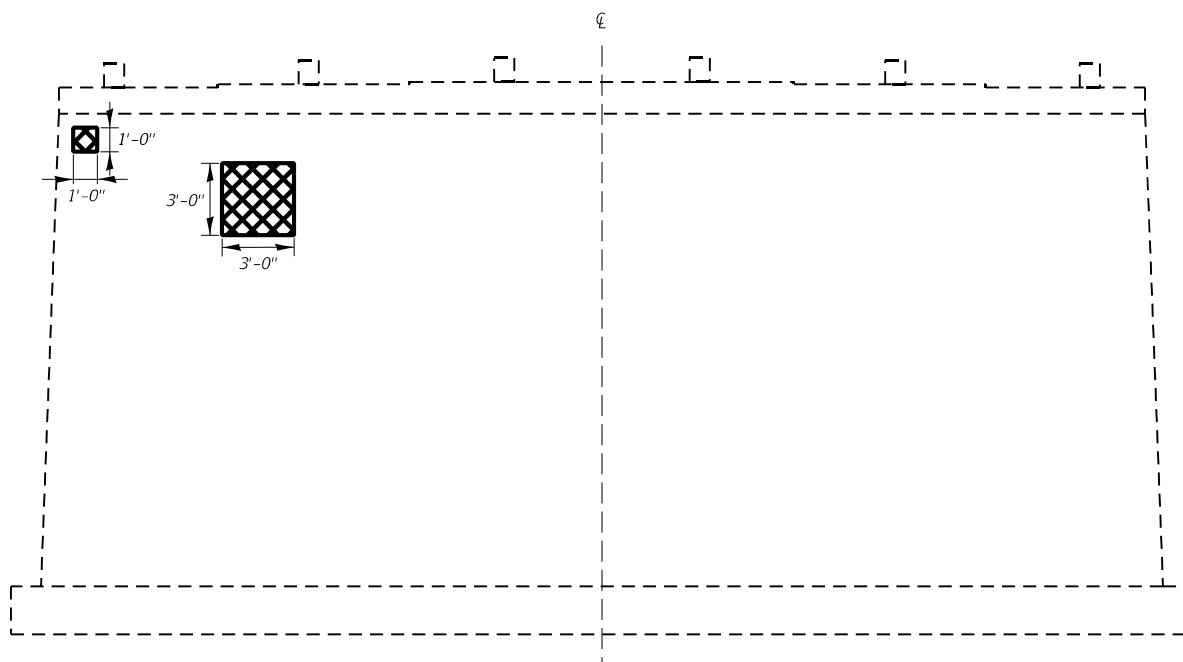
**FAI 57/FA5 2826

*WILLIAMSON/JEFFERSON



NORTH ABUTMENT ELEVATION (LOOKING NORTH)

 Structural Repair of Concrete ($\leq 5''$)



PIER 1 NORTH SIDE ELEVATION (LOOKING SOUTH)

BILL OF MATERIAL

Item	Unit	Total
Structural Repair of Concrete ($\leq 5''$)	Sq Ft	14

N. ABUT. & PIER 1 DETAILS
IL 37 OVER CASEY FORK
F.A.S. 2826 - D9 BRIDGE REPAIR 2022-3
JEFFERSON COUNTY
STATION 123+00.00
STRUCTURE NO. 041-0032

MODEL NUMBER: 11/11/2022
 FILE NAME: 041-0032

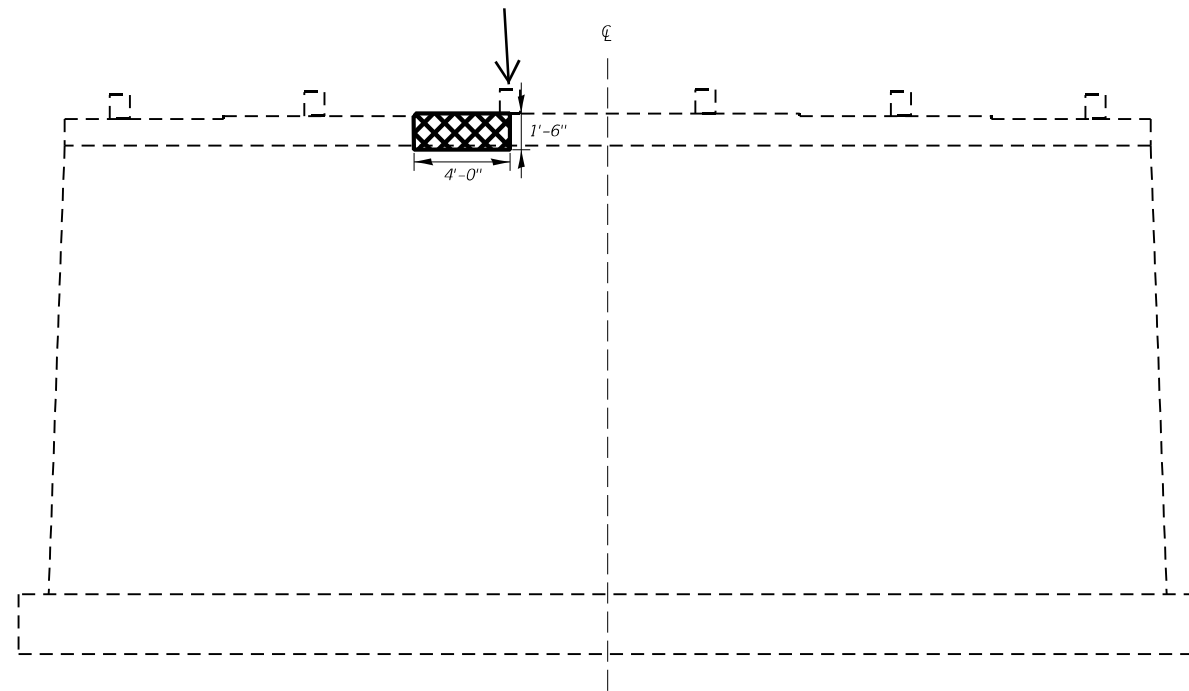
USER NAME = SUSERS	DESIGNED - _____	REVISED - _____
DRAWN - _____	REVISIONS - _____	REVISIONS - _____
PLOT SCALE = 5/SCALE5	CHECKED - _____	REVISIONS - _____
PLOT DATE = 5/DATE5	DATE - _____	REVISIONS - _____

STATE OF ILLINOIS
DEPARTMENT OF TRANSPORTATION

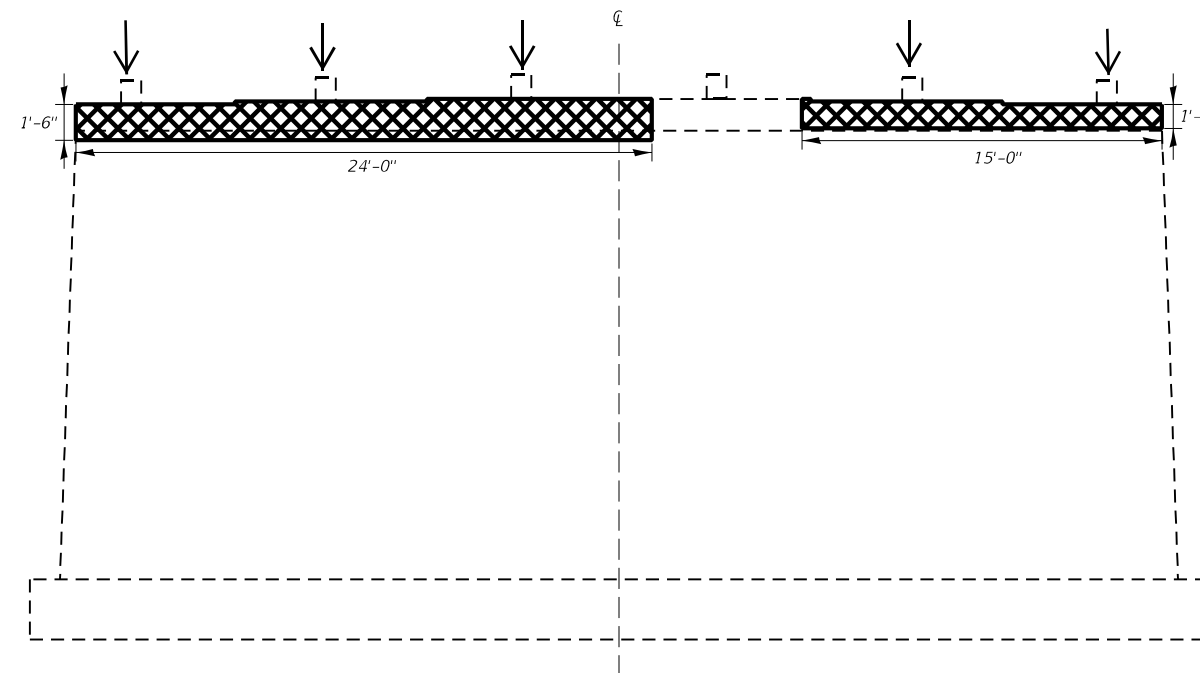
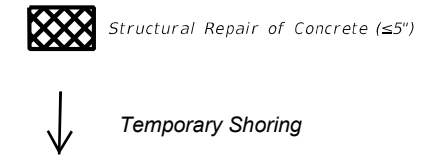
NORTH ABUT. & PIER 1 DETAILS
SN 041-0032

SCALE: _____ SHEET 4 OF 7 SHEETS STA. _____ TO STA. _____

F.A. RTE. **	SECTION	COUNTY	TOTAL SHEETS	SHEET NO.
**	BRIDGE REPAIR 2022-3	*	17	14
			CONTRACT NO. 78895	



PIER 3 NORTH SIDE ELEVATION (LOOKING SOUTH)



PIER 3 SOUTH SIDE ELEVATION (LOOKING NORTH)

BILL OF MATERIAL

Item	Unit	Total
Structural Repair of Concrete (≤5")	Sq Ft	57
Temporary Shoring and Cribbing	Each	6

PIER 3 DETAILS
IL 37 OVER CASEY FORK
F.A.S. 2826 - D9 BRIDGE REPAIR 2022-3
JEFFERSON COUNTY
STATION 123+00.00
STRUCTURE NO. 041-0032

MODEL NUMBER: MAM165
 FILE NAME: 041-0032

USER NAME = SUSERS	DESIGNED - _____	REVISED - _____
	DRAWN - _____	REVISED - _____
PLOT SCALE = 5/8"=1'-0"	CHECKED - _____	REVISED - _____
PLOT DATE = 5/20/2022	DATE - _____	REVISED - _____

STATE OF ILLINOIS
DEPARTMENT OF TRANSPORTATION

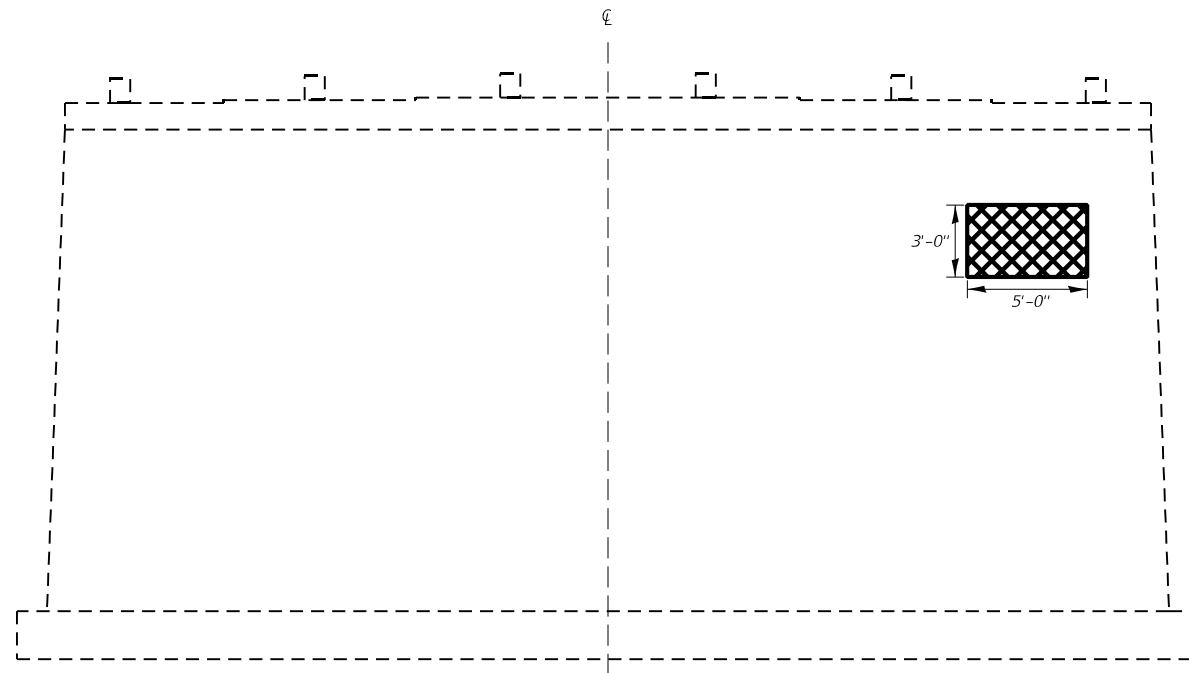
PIER 3 DETAILS
SN 041-0032

SCALE: _____ SHEET 5 OF 7 SHEETS STA. _____ TO STA. _____

F.A. RTE.	SECTION	COUNTY	TOTAL SHEETS	SHEET NO.
**	BRIDGE REPAIR 2022-3	*	17	15
			CONTRACT NO. 78895	
			ILLINOIS FED. AID PROJECT	

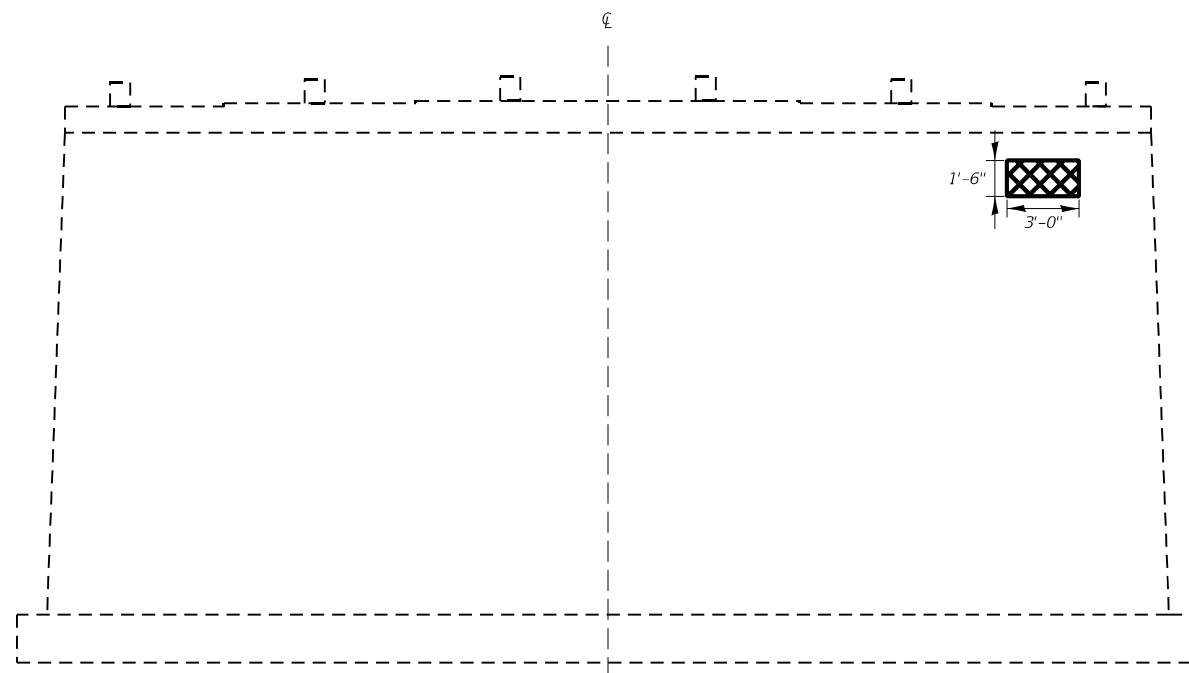
**FAI 57/FAS 2826

*WILLIAMSON/JEFFERSON



PIER 6 SOUTH SIDE ELEVATION (LOOKING NORTH)

 Structural Repair of Concrete ($\leq 5'$)



PIER 6 NORTH SIDE ELEVATION (LOOKING SOUTH)

BILL OF MATERIAL

Item	Unit	Total
Structural Repair of Concrete ($\leq 5'$)	Sq Ft	20

PIER 6 DETAILS
IL 37 OVER CASEY FORK
F.A.S. 2826 - D9 BRIDGE REPAIR 2022-3
JEFFERSON COUNTY
STATION 123+00.00
STRUCTURE NO. 041-0032

MODEL NUMBER: MAMES
 FILE NAME: 2826.DWG

USER NAME = SUSERS	DESIGNED - _____	REVISED - _____
	DRAWN - _____	REVISED - _____
PLOT SCALE = 5/SCALE5	CHECKED - _____	REVISED - _____
PLOT DATE = 5/DATE5	DATE - _____	REVISED - _____

STATE OF ILLINOIS
DEPARTMENT OF TRANSPORTATION

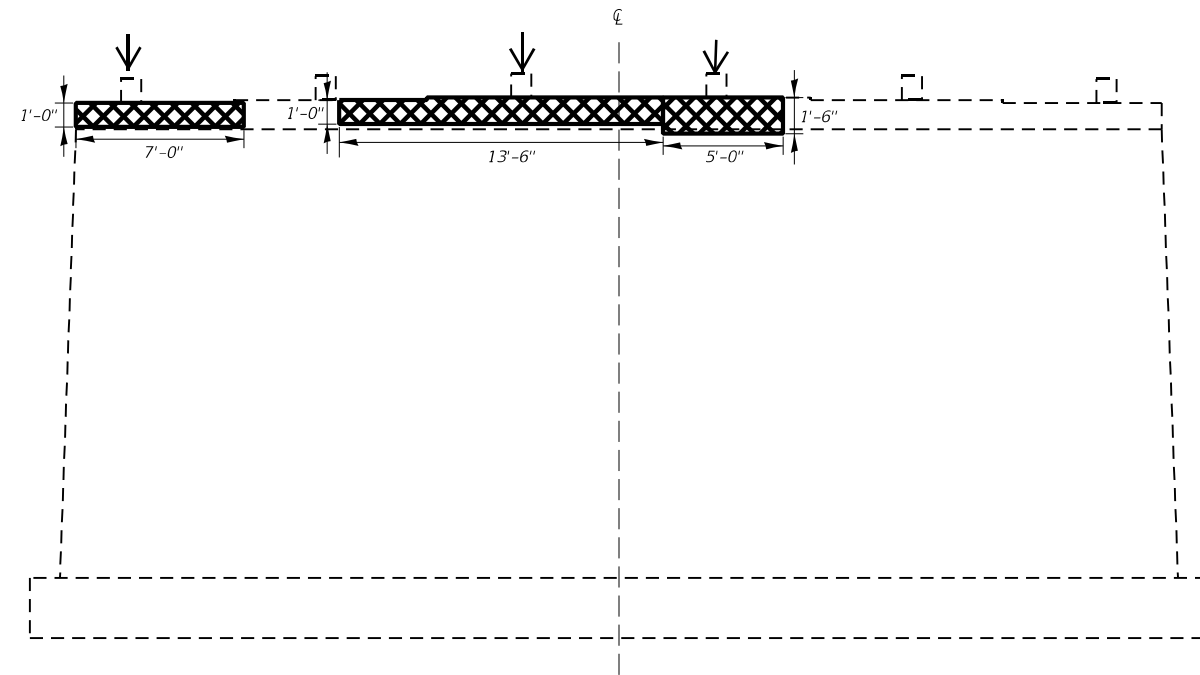
PIER 6 DETAILS
SN 041-0032

SCALE: _____ SHEET 6 OF 7 SHEETS STA. _____ TO STA. _____

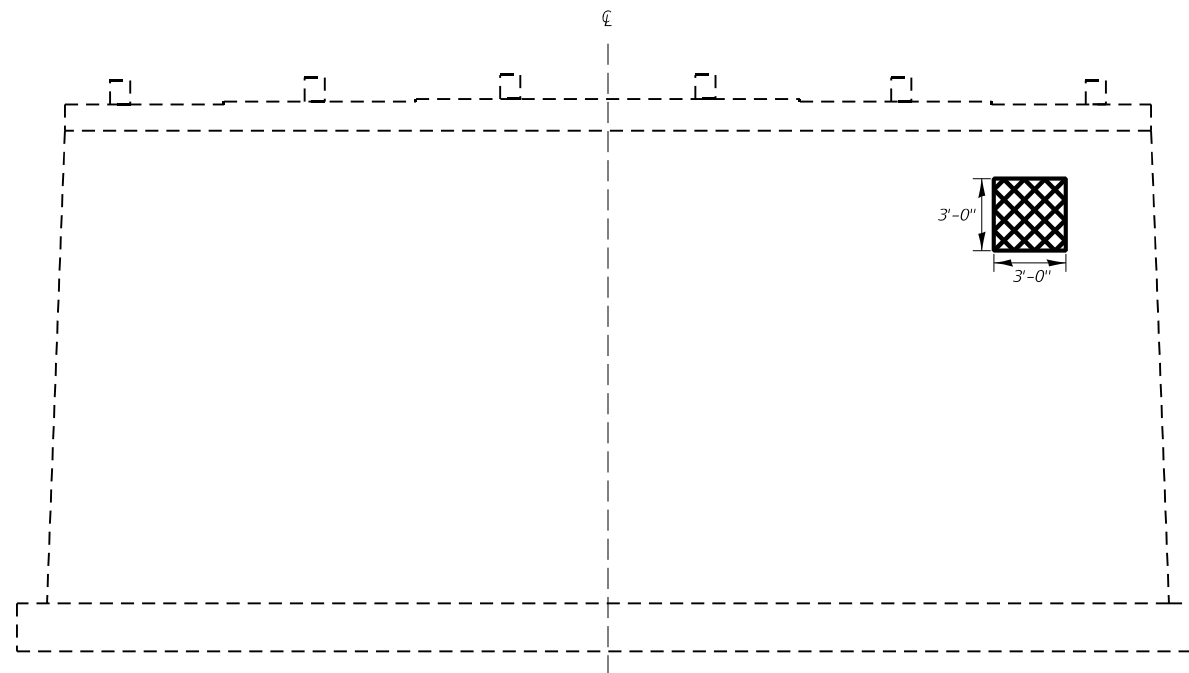
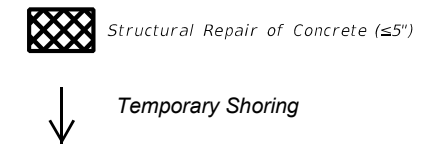
F.A. ** RTE.	SECTION	COUNTY	TOTAL SHEETS	SHEET NO.
**	BRIDGE REPAIR 2022-3	*	17	16
			CONTRACT NO. 78895	

**FAI 57/FA5 2826

*WILLIAMSON/JEFFERSON



PIER 5 NORTH SIDE ELEVATION (LOOKING SOUTH)



PIER 7 SOUTH SIDE ELEVATION (LOOKING NORTH)

BILL OF MATERIAL

Item	Unit	Total
Structural Repair of Concrete (≤5")	Sq Ft	37
Temporary Shoring and Cribbing	Each	4

PIER 5 & 7 DETAILS
IL 37 OVER CASEY FORK
F.A.S. 2826 - D9 BRIDGE REPAIR 2022-3
JEFFERSON COUNTY
STATION 123+00.00
STRUCTURE NO. 041-0032

MODEL NUMBER: MAM165
 FILE NAME: 041-0032

USER NAME = SUSERS	DESIGNED - _____	REVISED - _____
DRAWN - _____	REVISIONS - _____	REVISIONS - _____
PLOT SCALE = 5/8"=1'-0"	CHECKED - _____	REVISIONS - _____
PLOT DATE = 5/20/2022	DATE - _____	REVISIONS - _____

STATE OF ILLINOIS
DEPARTMENT OF TRANSPORTATION

PIER 5 & PIER 7 DETAILS
SN 041-0032

SCALE: _____ SHEET 7 OF 7 SHEETS STA. _____ TO STA. _____

F.A. ** RTE.	SECTION	COUNTY	TOTAL SHEETS	SHEET NO.
**	BRIDGE REPAIR 2022-3	*	17	17
			CONTRACT NO. 78895	

**FAI 57/FA5 2826

*WILLIAMSON/JEFFERSON