

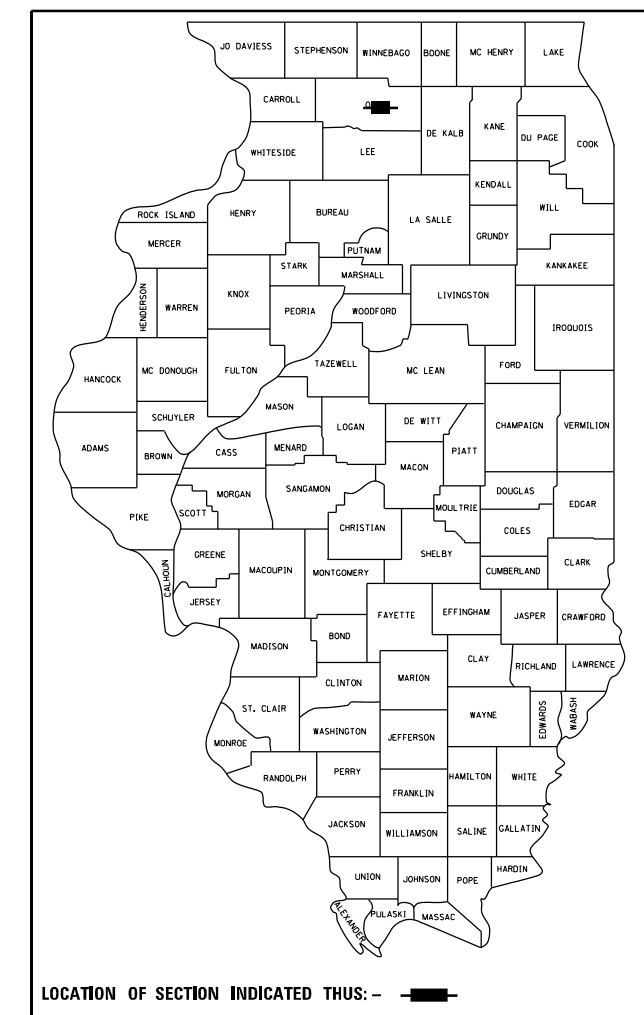
STATE OF ILLINOIS

DEPARTMENT OF TRANSPORTATION

PROPOSED HIGHWAY PLANS

F.A. RTE.	SECTION	COUNTY	TOTAL SHEETS	SHEET NO.
17A & 553	D2 BDR 2022-1	OGLE	23	1
ILLINOIS			CONTRACT NO. 64R34	

D-92-078-21



SEE SHEET 2 OF 2 OF INDEX OF SHEETS

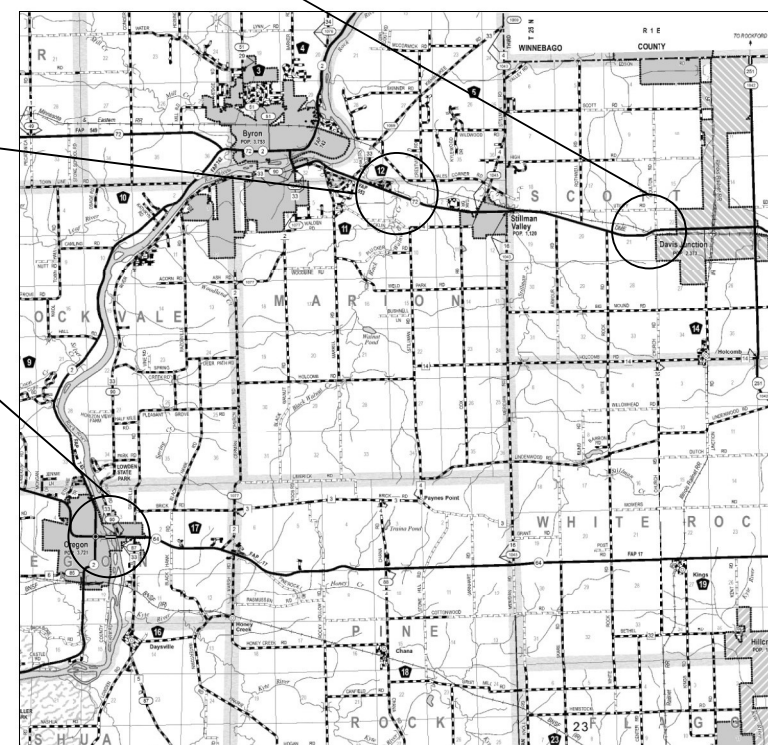
ROUTE FAP 17A (ILL 64) & FAP 553 (ILL 72)
SECTION D2 BDR 2022-1
PROJECT
BRIDGE REHABILITATION
OGLE COUNTY, IL

C-92-007-22

EXISTING STRUCTURE
 SN 071-0077 A 3 SPAN
 CONCRETE GIRDER SUPERSTRUCTURE
 WITH CLOSED ABUTMENTS
 AND WALL PIERS.
 BACK TO BACK LENGTH = 221'-8"
 OUT TO OUT WIDTH = 35'-2"

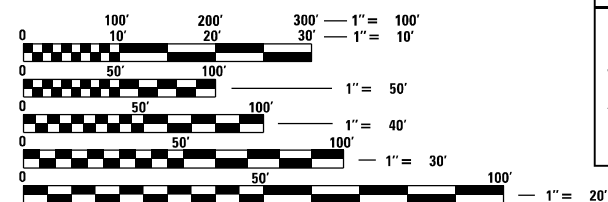
EXISTING STRUCTURE
 SN 071-0084 A SINGLE SPAN
 CONCRETE GIRDER SUPERSTRUCTURE
 WITH CLOSED ABUTMENTS
 BACK TO BACK LENGTH = 81'
 OUT TO OUT WIDTH = 35'-2"

EXISTING STRUCTURE
 SN 071-0088 A 7 SPAN
 STEEL GIRDER SUPERSTRUCTURE
 WITH CLOSED ABUTMENTS
 AND WALL PIERS.
 BACK TO BACK LENGTH = 915'-4"
 OUT TO OUT WIDTH = 61'-8"



LOCATION MAP

GROSS LENGTH = 1,218.00 FT. = 0.23 MILE
 NET LENGTH = 1,218.00 FT. = 0.23 MILE

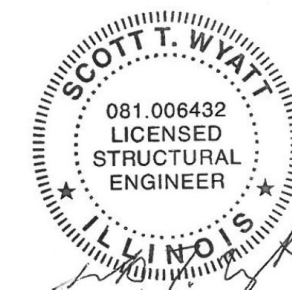


FULL SIZE PLANS HAVE BEEN PREPARED USING STANDARD ENGINEERING SCALES. REDUCED SIZE PLANS WILL NOT CONFORM TO STANDARD SCALES. IN MAKING MEASUREMENTS ON REDUCED PLANS, THE ABOVE SCALES MAY BE USED.

J.U.L.I.E.
 JOINT UTILITY LOCATION INFORMATION FOR EXCAVATION
 1-800-892-0123
 OR 811

PROJECT ENGINEER SCOTT WYATT, PE, SE
PROJECT MANAGER MAHMOUD ETEMADI, PE

CONTRACT NO. 64R34



10-26-21
 exp 11-30-22

STATE OF ILLINOIS
 DEPARTMENT OF TRANSPORTATION

SUBMITTED December 13, 2021

Mahmoud Etemadi
 REGIONAL ENGINEER

February 4, 2022
Scott Wyatt
 ENGINEER OF DESIGN AND ENVIRONMENT

February 4, 2022
Stephen M. Lavin
 DIRECTOR OF HIGHWAYS PROJECT IMPLEMENTATION

**PRINTED BY THE AUTHORITY
 OF THE STATE OF ILLINOIS**

SHEET INDEX

1. COVER
2. GENERAL NOTES/ CONSTRUCTION SEQUENCE
3. SUMMARY OF QUANTITIES
4. MAINTENANCE OF TRAFFIC SCHEDULES
5. STAGING TYPICAL SECTION SN 071-0088
6. STAGING TYPICAL SECTION SN 071-0077 AND SN 071-0084
- 7-8. MAINTENANCE OF TRAFFIC PLAN STAGE 1 SN 071-0088
- 9-10. MAINTENANCE OF TRAFFIC PLAN STAGE 2 SN 071-0088
11. MAINTENANCE OF TRAFFIC PLAN PRESTAGE PHASE 1 SN 071-0077
12. MAINTENANCE OF TRAFFIC PLAN PRESTAGE PHASE 2 SN 071-0077
13. MAINTENANCE OF TRAFFIC PLAN STAGE 1 SN 071-0077
14. MAINTENANCE OF TRAFFIC PLAN STAGE 2 SN 071-0077
15. MAINTENANCE OF TRAFFIC PLAN STAGE 1 SN 071-0084
16. MAINTENANCE OF TRAFFIC PLAN STAGE 2 SN 071-0084
17. DISTRICT 2 STANDARD 34.1
18. SN 071-0088 PLAN AND ELEVATION
19. SN 071-0088 REPAIR DETAILS
20. SN 071-0077 PLAN AND ELEVATION
21. SN 071-0077 REPAIR DETAILS
22. SN 071-0084 PLAN AND ELEVATION
23. SN 071-0084 REPAIR DETAILS

STATE HIGHWAY STANDARDS

000001-08	STANDARD SYMBOLS, ABBREVIATIONS AND PATTERNS
482001-02	HMA SHOULDER ADJACENT TO FLEXIBLE PAVEMENT
701006-05	OFF-RD OPERATIONS, 2L, 2W, 15' TO 24" FROM PAVEMENT EDGE
701201-05	LANE CLOSURE, 2L, 2W, DAY ONLY, FOR SPEEDS ≥ 45 MPH
701301-04	LANE CLOSURE, 2L, 2W, SHORT TIME OPERATIONS
701311-03	LANE CLOSURE, 2L, 2W, MOVING OPERATIONS-DAY ONLY
701321-18	LANE CLOSURE, 2L, 2W, BRIDGE REPAIR WITH BARRIER
701326-04	LANE CLOSURE, 2L, 2W, PAVEMENT WIDENING FOR SPEEDS ≥ 45 MPH
701611-01	URBAN HALF ROAD CLOSURE, MULTILANE, 2W WITH MOUNTABLE MEDIAN
701901-08	TRAFFIC CONTROL DEVICES
704001-08	TEMPORARY CONCRETE BARRIER
780001-05	TYPICAL PAVEMENT MARKINGS
782006-01	GUARDRAIL AND BARRIER WALL REFLECTOR MOUNTING DETAILS

MAINTENANCE OF TRAFFIC GENERAL NOTES

1. THE MAINTENANCE OF TRAFFIC CONTROL (MOT) PLANS SHALL SERVE AS A GUIDE FOR SAFE DIVERSION OF TRAFFIC DURING EXECUTION OF THIS CONTRACT. HOWEVER, THE CONTRACTOR MAY MODIFY THE MOT PLANS TO MEET CONSTRUCTION NEEDS, BUT NOT AT THE EXPENSE OF PUBLIC SAFETY OR CONVENIENCE. ANY CHANGES TO THE MOT PLANS SHALL BE SUBMITTED TO THE ENGINEER FOR APPROVAL.
2. THE ENGINEER SHALL BE INFORMED 48 HOURS IN ADVANCE OF ANY PROPOSED CHANGE TO THE MOT PLANS.
3. ALL EXISTING PAVEMENT MARKINGS IN CONFLICT WITH THE MAINTENANCE OF TRAFFIC STRIPING SHALL BE BLACKED OUT TO THE LIMITS SHOWN IN THE PLANS.
4. ALL TEMPORARY PAVEMENT MARKING WHICH CONFLICTS WITH THE NEXT STAGE OR FINAL STRIPING SHALL BE BLACKED OUT TO THE LIMITS SPECIFIED IN THE PLANS AND IN THE SCHEDULES OF PAVEMENT MARKING.
5. ALL TRAFFIC CONTROL DEVICES USED FOR THE MAINTENANCE OF TRAFFIC, AS DETAILED ON THE PLANS OR HIGHWAY STANDARD, SHALL BE REFLECTORIZED PRIOR TO INSTALLATION AND CLEANED AS SPECIFIED IN THE MAINTENANCE OF TRAFFIC SPECIAL PROVISIONS OR AS DIRECTED BY THE ENGINEER.
6. ALL DRUMS, VERTICAL PANELS AND BARRICADES ADJACENT TO THE EDGE OF TRAVELED WAY SHALL BE EQUIPPED WITH BI-DIRECTIONAL STEADY-BURNING LIGHTS.
7. ALL EXISTING SIGNS WITHIN MAINTENANCE OF TRAFFIC LIMITS WHICH ARE OBLSCURED BY OR INTERFERE WITH CONSTRUCTION OPERATIONS AND MAINTENANCE OF TRAFFIC, SHALL BE COVERED OR REMOVED BY THE CONTRACTOR UNLESS SPECIFIED IN THE PLANS OR WHEN DIRECTED BY THE ENGINEER. THIS WORK SHALL BE IN ACCORDANCE WITH ARTICLE 107.25 OF THE IDOT STANDARD SPECIFICATIONS.
8. A FULL DEPTH SAWCUT WILL BE REQUIRED BETWEEN PAVEMENT, CURB AND/OR GUTTER TO REMAIN AND PAVEMENT, CURB AND/OR GUTTER TO BE REMOVED PRIOR TO BEGINNING OF REMOVAL WORK. COST TO BE INCLUDED WITH APPLICABLE REMOVAL ITEMS.
9. AS AN ADDITIONAL SOURCE OF INFORMATION IF NEEDED, ORIGINAL CONSTRUCTION SECTION NUMBER FOR STRUCTURE NUMBER 071-0088 IS BR-17 (104). UNITS OF MEASUREMENT FOR BR-17 (104) ARE METRIC. ORIGINAL CONSTRUCTION SECTION NUMBER FOR 071-0084 IS 119 BR-2. ORIGINAL CONSTRUCTION SECTION NUMBER FOR 071-0077 IS 120 BR.
10. THE CONTRACTOR SHALL CONTACT THE IDOT DISTRICT 2 ENGINEER AT (815)284-2271 A MINIMUM OF 72 HOURS IN ADVANCE OF BEGINNING WORK.

PAY ITEMS FOR MAINTENANCE OF TRAFFIC WORK

- ITEM "TEMPORARY BRIDGE TRAFFIC SIGNALS" IS INTENDED FOR THE MATERIAL, EQUIPMENT AND LABOR NECESSARY FOR THE INSTALLATION, MAINTENANCE AND RELOCATION OF THE TEMPORARY TRAFFIC SIGNALS AT BOTH ENDS OF CONSTRUCTION FOR SN 071-0077 AND SN 071-0084.
- ITEM "TRAFFIC CONTROL AND PROTECTION, STANDARD 701201" IS INTENDED FOR THE MATERIAL, EQUIPMENT AND LABOR NECESSARY FOR THE INSTALLATION, MAINTENANCE AND RELOCATION OF SIGNS, DRUMS, LIGHTS, PANELS, AND REFLECTORS NECESSARY TO MAINTAIN SAFE TRAFFIC FLOW DURING PRE-STAGE CONSTRUCTION FOR SN 071-0077 IN ACCORDANCE WITH IDOT STANDARD 701201.
- ITEM "TRAFFIC CONTROL AND PROTECTION, STANDARD 701326" IS INTENDED FOR THE MATERIAL, EQUIPMENT AND LABOR NECESSARY TO MAINTAIN TRAFFIC CONTROL AND PROTECTION FOR SN 071-0077 PRE-STAGE CONSTRUCTION DROP-OFF AND OPEN AREAS DURING TIMES WHEN CONTRACTOR IS NOT ENGAGING IN CONSTRUCTION OPERATIONS.
- ITEM "TRAFFIC CONTROL SURVEILLANCE" IS INTENDED FOR THE MATERIAL, EQUIPMENT AND LABOR NECESSARY TO MAINTAIN TRAFFIC CONTROL AND PROTECTION FOR SN 071-0077 PRE-STAGE CONSTRUCTION DROP-OFF AND OPEN AREAS DURING TIMES WHEN CONTRACTOR IS NOT ENGAGING IN CONSTRUCTION OPERATIONS.
- ITEM "TRAFFIC CONTROL AND PROTECTION, STANDARD 701321" IS INTENDED FOR THE MATERIAL, EQUIPMENT AND LABOR NECESSARY FOR THE INSTALLATION, MAINTENANCE AND RELOCATION OF TEMPORARY TRAFFIC SIGNALS, SIGNS, DRUMS, LIGHTS, PANELS, AND REFLECTORS NECESSARY TO MAINTAIN SAFE TRAFFIC FLOW DURING THE SETUP OF STAGED CONSTRUCTION MAINTENANCE OF TRAFFIC IN ACCORDANCE WITH IDOT STANDARD 701321. THIS ITEM IS VALID AT ALL CONSTRUCTION LOCATIONS.
- ITEM "TRAFFIC CONTROL AND PROTECTION, STANDARD 701331" IS INTENDED FOR THE MATERIAL, EQUIPMENT AND LABOR NECESSARY FOR THE INSTALLATION, MAINTENANCE AND RELOCATION OF SIGNS, DRUMS, LIGHTS, PANELS, AND REFLECTORS NECESSARY TO MAINTAIN SAFE TRAFFIC FLOW DURING STAGED CONSTRUCTION FOR SN 071-0088 IN ACCORDANCE WITH IDOT STANDARD 701331.
- ITEM "PAVEMENT MARKING BLACKOUT TAPE" IS INTENDED FOR THE MATERIAL, EQUIPMENT AND LABOR NECESSARY TO PLACE AND MAINTAIN BLACKOUT TAPE OF THE TYPE, SIZE AND LIMITS SPECIFIED IN THE PLANS, SPECIFICATIONS, AND IDOT STANDARD 780001. THIS ITEM IS VALID AT ALL CONSTRUCTION LOCATIONS.
- ITEM "TEMPORARY PAVEMENT MARKING TAPE" IS INTENDED FOR THE MATERIAL, EQUIPMENT AND LABOR NECESSARY TO PLACE AND MAINTAIN TEMPORARY PAVEMENT MARKING TAPE OF THE TYPE, SIZE AND LIMITS SPECIFIED IN THE PLANS, SPECIFICATIONS, AND IDOT STANDARD 780001. THIS ITEM IS VALID AT ALL CONSTRUCTION LOCATIONS.
- ITEM "SHORT TERM PAVEMENT MARKING REMOVAL" IS INTENDED FOR THE MATERIAL, EQUIPMENT AND LABOR NECESSARY TO REMOVE TEMPORARY PAVEMENT MARKINGS TO THE LIMITS SPECIFIED IN THE PLANS.

SN 071-0077 AND SN 071-0084
SUGGESTED MAINTENANCE OF TRAFFIC SEQUENCING

- PRESTAGE (SN 071-0077 ONLY)
- INSTALL CONSTRUCTION TRAFFIC CONTROL SIGNS, DRUMS AND BARRICADES FOR PRE-STAGE CONSTRUCTION. PHYSICAL LOCATIONS FOR "ROAD CONSTRUCTION AHEAD" AND "ONE LANE ROAD AHEAD" SIGNS DO NOT CHANGE DURING STAGE 1 AND STAGE 2 UNLESS OTHERWISE DIRECTED BY THE ENGINEER.
- EXCAVATE AND PLACE HOT-MIX ASPHALT SHOULDERS 8" DEEP TO THE LIMITS SHOWN IN THE PLANS. GUARDRAIL DAMAGED BY EXCAVATION AND PAVING FOR SHOULDERS SHALL BE REPAIRED AT THE CONTRACTOR'S EXPENSE.
- PRE-STAGE PHASE 2 SHOULDER WORK MAY BE DONE DURING STAGE 1 MOT SETUP. THE FOLLOWING WILL APPLY IF THIS OPTION IS PURSUED:
- All Pre-Stage Phase 2 shoulder work must be done during the Stage 1 MOT setup. A revised schedule of work must be submitted to the Engineer for approval prior to beginning of contract work.
- All labor, equipment and material for shoulder work must be kept behind the Stage 1 Temporary Concrete Barrier Wall. Traffic control and protection will be included in the original price bid for Stage 1 MOT items "Traffic Control & Protection Std 701321", "Temporary Concrete Barrier Wall", and "Temporary Bridge Traffic Signals".
- Provisions, notes, and items "Traffic Control Surveillance", "Traffic Control & Protection Standard 701326", and "Traffic Control & Protection Standard 701201" will only apply for Pre-Stage Phase 1 MOT.

- STAGE 1 (SN 071-0077 AND SN 071-0084)
- INSTALL ALL STAGE 1 CONSTRUCTION TRAFFIC CONTROL SIGNALS, SIGNS, DRUMS, BARRICADES, TEMPORARY CONCRETE BARRIER, TEMPORARY IMPACT ATTENUATORS, AND TEMPORARY PAVEMENT MARKINGS AS DETAILED IN STAGE 1 PLANS AND APPROPRIATE STANDARD DRAWINGS. LOCATIONS FOR ADVANCE WARNING SIGNS, TEMPORARY BRIDGE SIGNALS, AND STOP LINES DO NOT CHANGE FROM STAGE 1 TO STAGE 2 UNLESS OTHERWISE DIRECTED BY THE ENGINEER.
- MERGE ALL TRAFFIC IN BOTH DIRECTIONS TO THE EXISTING EASTBOUND LANE AND SHOULDER.
- COORDINATE WORK TO BE COMPLETED IN THIS STAGE WITH DETAILS IN THE BRIDGE PLANS.
- STAGE 2 (SN 071-0077 AND SN 071-0084)
- CHANGE STAGE 1 CONSTRUCTION TRAFFIC CONTROL SIGNALS, SIGNS, DRUMS, BARRICADES, TEMPORARY CONCRETE BARRIER, TEMPORARY IMPACT ATTENUATORS, AND TEMPORARY PAVEMENT MARKINGS AS NEEDED TO REFLECT STAGE 2 PLANS AND APPROPRIATE STANDARD DRAWINGS.
- MERGE ALL TRAFFIC IN BOTH DIRECTIONS TO THE EXISTING WESTBOUND LANE AND SHOULDER.
- REMOVE ALL CONFLICTING TRAFFIC CONTROL ITEMS FROM STAGE 1 SETUP.
- COORDINATE WORK TO BE COMPLETED IN THIS STAGE WITH DETAILS IN THE BRIDGE PLANS.

- POST STAGE (SN 071-0077 AND SN 071-0084)
- REMOVE ALL CONSTRUCTION TRAFFIC CONTROL AND TEMPORARY CONSTRUCTION ITEMS.
- REMOVE ANY REMAINING EXISTING TEMPORARY PAVEMENT MARKINGS WITHIN THE PERMANENT PAVEMENT MARKING LIMITS.

SN 071-0088
SUGGESTED MAINTENANCE OF TRAFFIC SEQUENCING

- STAGE 1
- INSTALL ALL STAGE 1 CONSTRUCTION TRAFFIC CONTROL SIGNS, DRUMS, BARRICADES, AND TEMPORARY PAVEMENT MARKINGS AS DETAILED IN STAGE 1 PLANS AND APPROPRIATE STANDARD DRAWINGS.
- MOVE ALL TRAFFIC TO THE TWO LANES SOUTH OF THE CENTERLINE FOR SN 071-0088.
- COORDINATE WORK TO BE COMPLETED IN THIS STAGE WITH DETAILS IN THE BRIDGE PLANS.
- STAGE 2
- CHANGE STAGE 1 CONSTRUCTION TRAFFIC CONTROL SIGNS, DRUMS, AND TEMPORARY PAVEMENT MARKINGS AS NEEDED TO REFLECT STAGE 2 PLANS AND APPROPRIATE STANDARD DRAWINGS.
- MOVE ALL TRAFFIC TO THE TWO LANES NORTH OF THE CENTERLINE FOR SN 071-0088.
- REMOVE ALL CONFLICTING TRAFFIC CONTROL ITEMS FROM STAGE 1 SETUP.
- COORDINATE WORK TO BE COMPLETED IN THIS STAGE WITH DETAILS IN THE BRIDGE PLANS.
- POST STAGE
- REMOVE ALL CONSTRUCTION TRAFFIC CONTROL AND TEMPORARY CONSTRUCTION ITEMS.
- REMOVE ANY REMAINING EXISTING TEMPORARY PAVEMENT MARKINGS WITHIN THE PERMANENT PAVEMENT MARKING LIMITS.

MODEL: D:\p\h\l
 FILE NAME: E:\projects\Miscellaneous\20911-1\CAD\dwg\0_0regon IL 64 OVER ROCK MOT NOTES.dwg
 3230 Executive Drive, Joliet, Illinois 60431
 Ph: (815) 730-3444 Fax: (815) 730-6703
 IL LICENSE NO. 184-003005
 © 2020 HAMILTON CONSULTING ENGINEERS, INC.

HAMILTON CONSULTING ENGINEERS, INC.

USER NAME = mibuiting	DESIGNED -	REVISED -
PLOT SCALE = 100.0000 ' / in.	DRAWN - DWS	REVISED -
PLOT DATE = 12/15/2021	CHECKED -	REVISED -
	DATE -	REVISED -

**STATE OF ILLINOIS
DEPARTMENT OF TRANSPORTATION**

**IL 64 OVER ROCK RIVER. IL 72 OVER BLACK WALNUT & KILBUCK CREEKS
GENERAL NOTES / CONSTRUCTION SEQUENCE**

SCALE: NA SHEET 2 OF 23 SHEETS STA. TO STA.

F.A.P. RTE.	SECTION	COUNTY	TOTAL SHEETS	SHEET NO.
17A & 553	D2 BDR 2022-1	OGLE	23	2
CONTRACT NO. 64R34			ILLINOIS FED. AID PROJECT	

100% STATE URBAN

SUMMARY OF QUANTITIES

100% STATE URBAN

CODE NO.	ITEM	UNIT	TOTAL QUANTITY 0047
20200600	EXCAVATING AND GRADING EXISTING SHOULDER	UNIT	5
48203029	HOT-MIX ASPHALT SHOULDERS, 8"	SO YD	482
67100100	MOBILIZATION	L SUM	1
70100405	TRAFFIC CONTROL AND PROTECTION, STANDARD 701321	EACH	2
70100450	TRAFFIC CONTROL AND PROTECTION, STANDARD 701201	L SUM	1
70100500	TRAFFIC CONTROL AND PROTECTION, STANDARD 701326	L SUM	1
70102634	TRAFFIC CONTROL AND PROTECTION, STANDARD 701611	L SUM	1
70103815	TRAFFIC CONTROL SURVEILLANCE	CAL DA	14
70106500	TEMPORARY BRIDGE TRAFFIC SIGNALS	EACH	2
70107006	PAVEMENT MARKING BLACKOUT TAPE, 6"	FOOT	3,715
70107012	PAVEMENT MARKING BLACKOUT TAPE, 12"	FOOT	210
70300150	SHORT TERM PAVEMENT MARKING REMOVAL	SO FT	7,336
70307120	TEMPORARY PAVEMENT MARKING - LINE 4" - TYPE IV TAPE	FOOT	19,095
70307210	TEMPORARY PAVEMENT MARKING - LINE 24" - TYPE IV TAPE	FOOT	48
70400100	TEMPORARY CONCRETE BARRIER	FOOT	851
70400200	RELOCATE TEMPORARY CONCRETE BARRIER	FOOT	851

CODE NO.	ITEM	UNIT	TOTAL QUANTITY 0047
70600250	IMPACT ATTENUATORS, TEMPORARY (NON- REDIRECTIVE), TEST LEVEL 3	EACH	4
70600350	IMPACT ATTENUATORS, RELOCATE (NON- REDIRECTIVE), TEST LEVEL 3	EACH	4
* 78200005	GUARDRAIL REFLECTORS, TYPE A	EACH	46
* 78200011	BARRIER WALL REFLECTORS, TYPE C	EACH	212
Z0016200	DECK SLAB REPAIR (PARTIAL)	SO YD	730

*= SPECIALTY ITEM

MODEL: D:\p1\11111111\Projects\Miscellaneous\2021\11111111\CAD\Draw10_Urban_IL_64_M0113-20911-Urban_IL_64.rvt
 FILE NAME: P:\Projects\Miscellaneous\2021\11111111\CAD\Draw10_Urban_IL_64_M0113-20911-Urban_IL_64.rvt

HAMILTON CONSULTING ENGINEERS, INC.
 3230 Executive Drive, Joliet, Illinois 60431
 Ph: (815) 730-3444 Fax: (815) 730-6703
 IL LICENSE NO. 184-003005
 © 2020 HAMILTON CONSULTING ENGINEERS, INC.

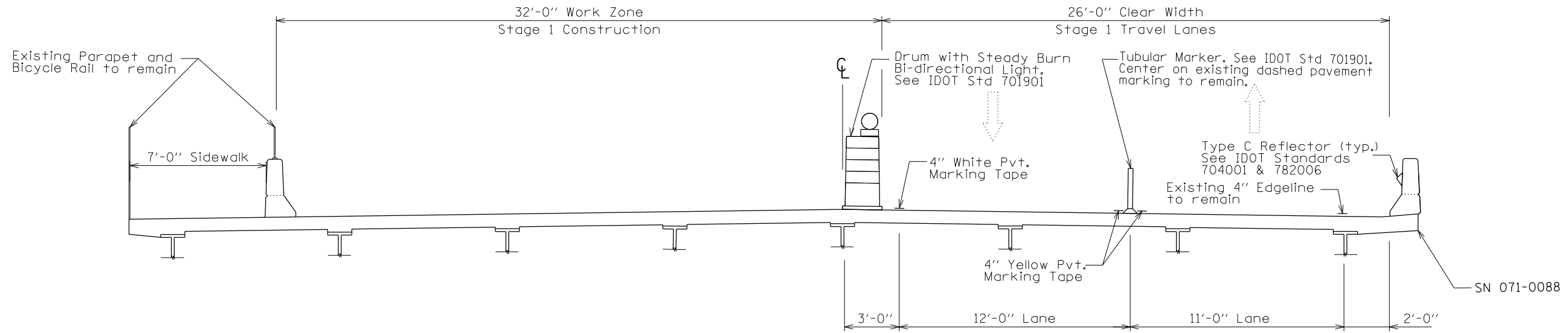
USER NAME = mibulting	DESIGNED - MGB	REVISED -
PLOT SCALE = 2.0000' / in.	DRAWN - DWS	REVISED -
PLOT DATE = 12/15/2021	CHECKED - HJH	REVISED -
	DATE -	REVISED -

**STATE OF ILLINOIS
DEPARTMENT OF TRANSPORTATION**

**IL 64 OVER ROCK RIVER. IL 72 OVER BLACK WALNUT & KILBUCK CREEKS
SUMMARY OF QUANTITIES**

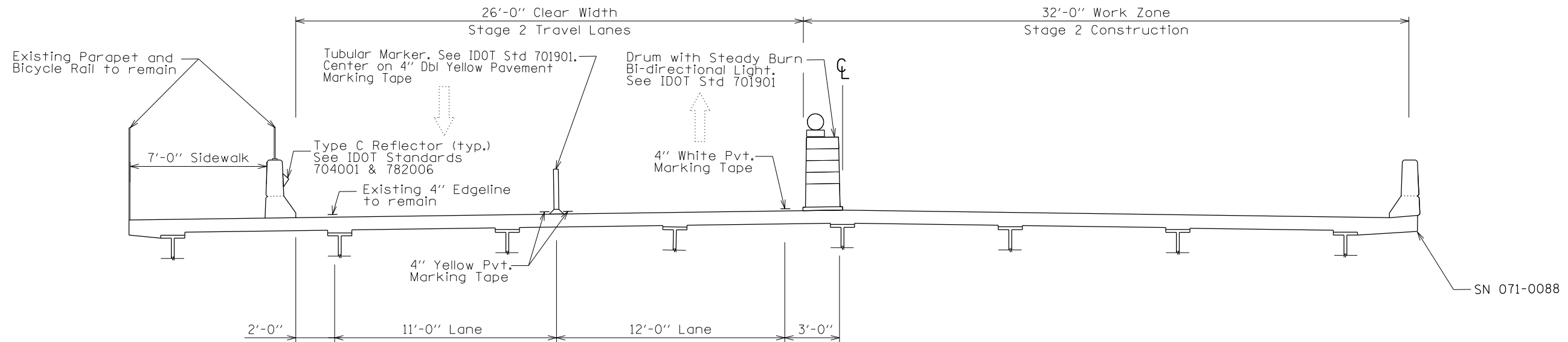
SCALE: NA SHEET 3 OF 23 SHEETS STA. TO STA.

F.A.P. RTE. 17A & 553	SECTION D2 BDR 2022-1	COUNTY OGLE	TOTAL SHEETS 23	SHEET NO. 3
CONTRACT NO. 64R34			ILLINOIS FED. AID PROJECT	



STAGE 1

NOTE: Removal or blackout of existing pavement markings will not be required on SN 071-0088 for any Maintenance of Traffic setups. Care shall be taken to minimize damage to existing pavement markings.



STAGE 2

NOTE: Removal or blackout of existing pavement markings will not be required on SN 071-0088 for any Maintenance of Traffic setups. Care shall be taken to minimize damage to existing pavement markings.

MODEL: D:\m\il_projects\Miscellaneous\2021\11\CAD\Draw10_Oregon IL 64\MOT1-SEC.dgn
 FILE NAME: E:\projects\Miscellaneous\2021\11\CAD\Draw10_Oregon IL 64\MOT1-SEC.dgn
 3230 Executive Drive, Joliet, Illinois 60431
 Ph: (815) 730-3444 Fax: (815) 730-6703
 LICENSE NO. 184-003005
 © 2020 HAMILTON CONSULTING ENGINEERS, INC.

HAMILTON CONSULTING ENGINEERS, INC.

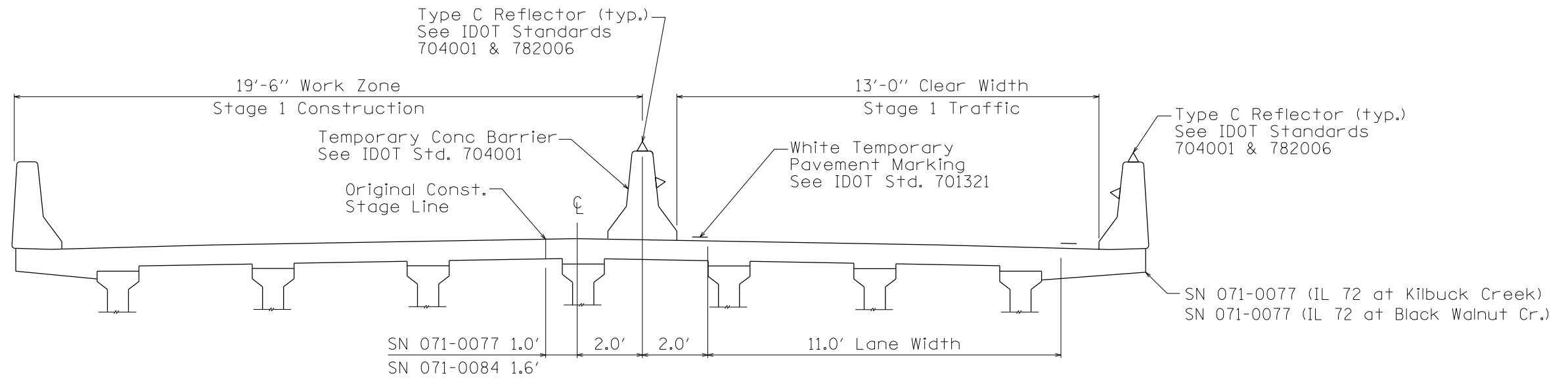
USER NAME = mibulting	DESIGNED - MGB	REVISED -
	DRAWN - MGB	REVISED -
PLOT SCALE = 600,0000' / in.	CHECKED -	REVISED -
PLOT DATE = 12/7/2021	DATE -	REVISED -

**STATE OF ILLINOIS
DEPARTMENT OF TRANSPORTATION**

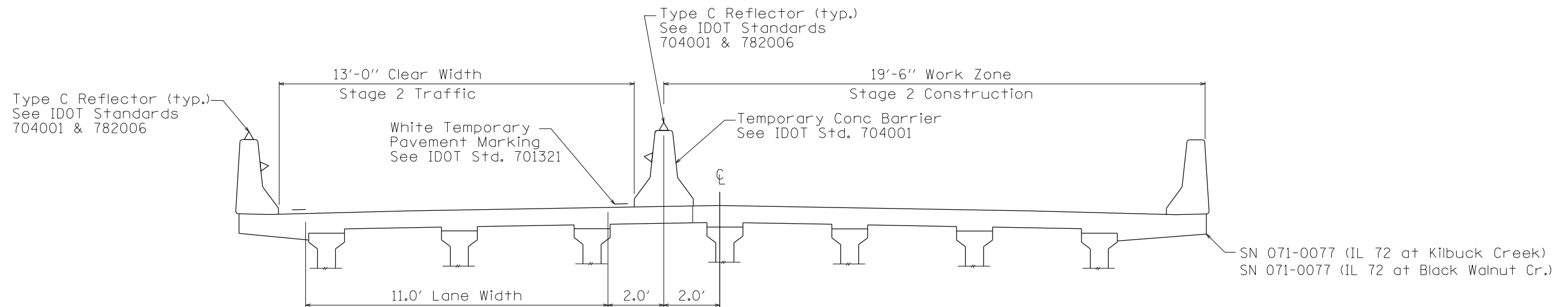
**IL 64 OVER ROCK RIVER. IL 72 OVER BLACK WALNUT & KILBUCK CREEKS
STAGING TYPICAL SECTION SN 071-0088**

F.A.P. RTE.	SECTION	COUNTY	TOTAL SHEETS	SHEET NO.
17	D2 BDR 2022-1	OGLE	23	5
CONTRACT NO. 64R34				
ILLINOIS FED. AID PROJECT				

SCALE: NTS SHEET 5 OF 23 SHEETS STA. TO STA.



STAGE 1



STAGE 2

MODEL: D:\p\h\i\Projects\Miscellaneous\20911-1\CAD\dwg_10 Davis Ict IL 72 MO\TG-20911.Dwg Ict IL 72-SEC.dwg
 FILE NAME: P:\Projects\Miscellaneous\20911-1\CAD\dwg_10 Davis Ict IL 72 MO\TG-20911.Dwg Ict IL 72-SEC.dwg
 © 2020 HAMILTON CONSULTING ENGINEERS, INC.

HAMILTON CONSULTING ENGINEERS, INC.
 3230 Executive Drive, Joliet, Illinois 60431
 Ph: (815) 730-3444 Fax: (815) 730-6703
 E LICENSE NO. 184-003005
 © 2020 HAMILTON CONSULTING ENGINEERS, INC.

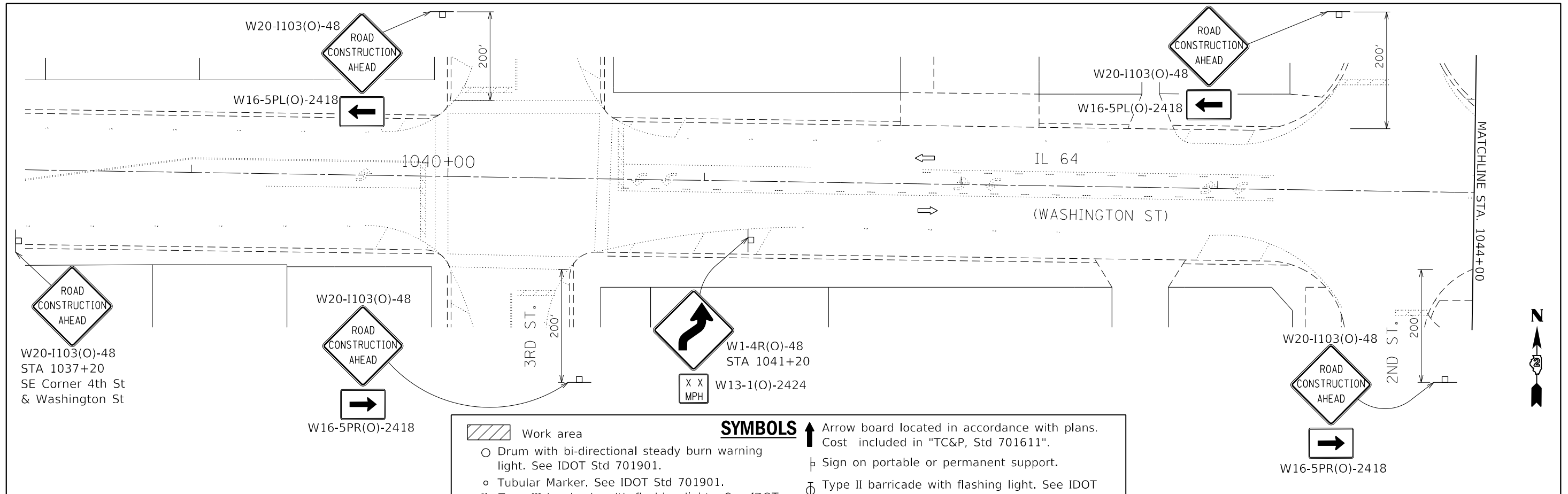
USER NAME = mibulding	DESIGNED -	REVISED -
	DRAWN - MGB	REVISED -
PLOT SCALE = 4.0000' / in.	CHECKED -	REVISED -
PLOT DATE = 12/7/2021	DATE -	REVISED -

STATE OF ILLINOIS
DEPARTMENT OF TRANSPORTATION

IL 64 OVER ROCK RIVER. IL 72 OVER BLACK WALNUT & KILBUCK CREEKS
SN 071-0077 AND SN 071-0084 STAGING TYPICAL SECTION

SCALE: NTS SHEET 4 OF SHEETS STA. TO STA.

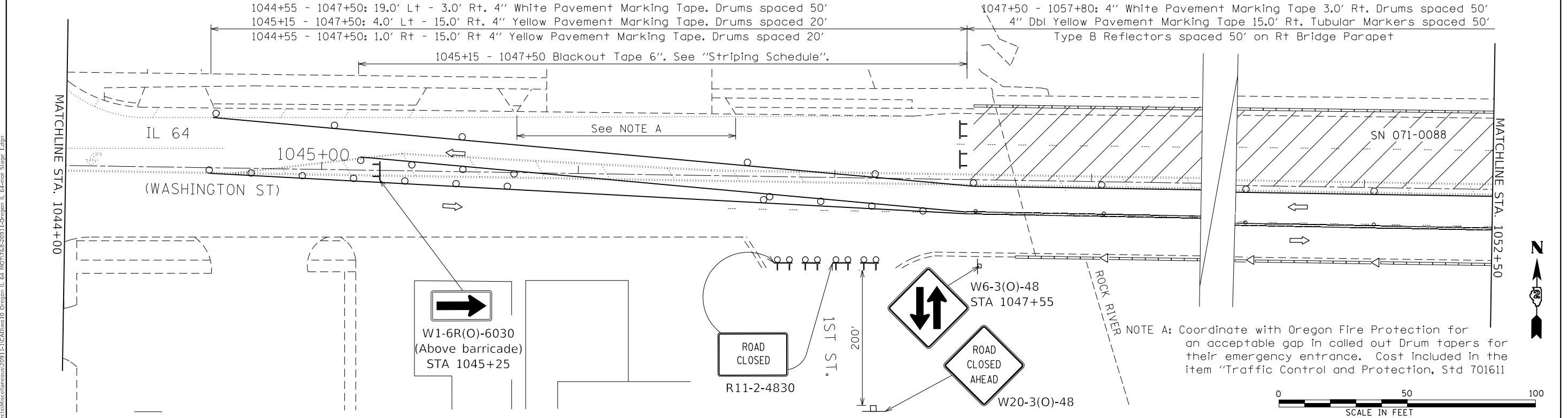
F.A.P. RTE.	SECTION	COUNTY	TOTAL SHEETS	SHEET NO.
17	(102BR)RS	OGLE	23	6
CONTRACT NO. 64R33			ILLINOIS FED. AID PROJECT	



SYMBOLS

- Work area
- Drum with bi-directional steady burn warning light. See IDOT Std 701901.
- Tubular Marker. See IDOT Std 701901.
- Type III barricade with flashing lights. See IDOT Std 701901. Cost included in "TC&P, Std 701611".
- Type III barricade. See IDOT Std 701901.
- Arrow board located in accordance with plans. Cost included in "TC&P, Std 701611".
- Sign on portable or permanent support.
- Type II barricade with flashing light. See IDOT Std 701901. Cost included in "TC&P, Std 701611".
- Type B Delineator. See IDOT Std 782006.

NOTE: All barricades, drums, vertical panels, cones and delineators shall be offset and spaced in accordance with IDOT Standard 701611 unless otherwise noted in the plans. Cost included in item "Traffic Control and Protection, Standard 701611".



NOTE A: Coordinate with Oregon Fire Protection for an acceptable gap in called out Drum tapers for their emergency entrance. Cost included in the item "Traffic Control and Protection, Std 701611"



MODEL: Default
FILE NAME: E:\projects\misc\clm\sn071-1\CAD\dwg10 Oregon IL 64_MOT1&2-2021-1-2.dwg, IL 64-encr, Stage 1.dwg

HAMILTON CONSULTING ENGINEERS, INC.
3230 Executive Drive, Joliet, Illinois 60431
Ph: (815) 730-3444 Fax: (815) 730-6703
IL LICENSE NO. 184-000009
© 2020 HAMILTON CONSULTING ENGINEERS, INC.

USER NAME = mbuiting	DESIGNED -	REVISED -
PLOT SCALE = 40.0000' / in.	DRAWN -	REVISED -
PLOT DATE = 12/15/2021	CHECKED -	REVISED -
	DATE -	REVISED -

**STATE OF ILLINOIS
DEPARTMENT OF TRANSPORTATION**

**IL 64 OVER ROCK RIVER, IL 72 OVER BLACK WALNUT & KILBUCK CREEKS
TRAFFIC CONTROL STAGE 1 PLAN SHEET SN 071-0088**

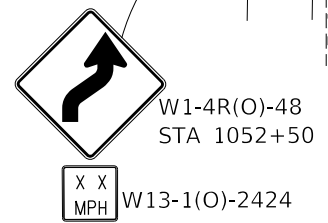
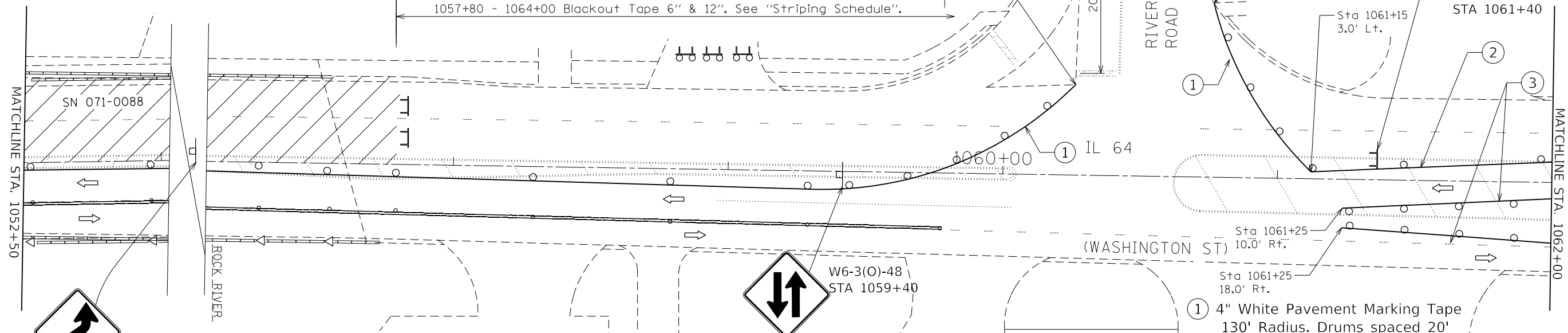
SCALE: 1"=20' SHEET OF 23 SHEETS STA. 1037+20 TO STA. 1052+50

F.A.P. RTE. 17A & 553	SECTION D2 BDR 2022-1	COUNTY OGLE	TOTAL SHEETS 23	SHEET NO. 7
CONTRACT NO. 64R34			ILLINOIS FED. AID PROJECT	

1047+50 - 1057+80:

4" White Pvt Marking Tape 3.0' Rt. Drums spaced 50'
 4" Dbl Yellow Pvt Mk Tape 15.0' Rt. Tubular Mkrs spaced 50'
 Type B Reflectors spaced 50' on Rt Bridge Parapet

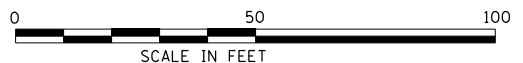
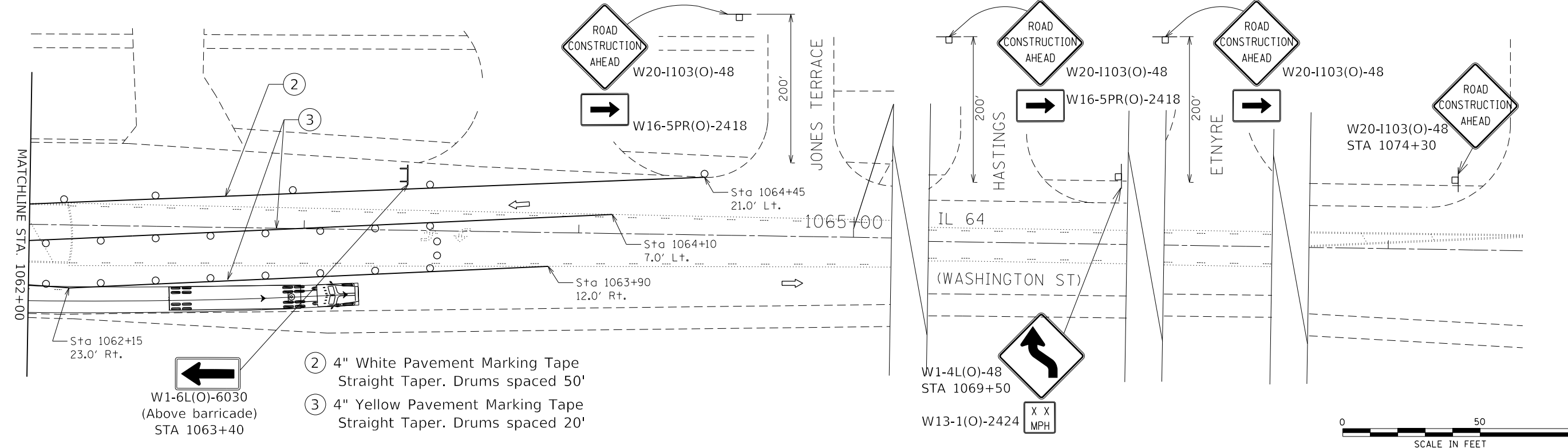
1057+80 - 1059+30 4" White Tape 3.0' Rt - 7.0' Lt. Drums spaced 50'
 1057+80 - 1059+80: 4" Dbl Yellow Tape 15.0' Rt - 19.0' Rt. Mkrs spaced 50'
 1057+80 - 1064+00 Blackout Tape 6" & 12". See "Striping Schedule".



SYMBOLS

- Work area
- Drum with bi-directional steady burn warning light. See IDOT Std 701901.
- Tubular Marker. See IDOT Std 701901.
- Type III barricade with flashing lights. See IDOT Std 701901. Cost included in "TC&P, Std 701611".
- Type III barricade. See IDOT Std 701901.
- Arrow board located in accordance with plans. Cost included in "TC&P, Std 701611".
- Sign on portable or permanent support.
- Type II barricade with flashing light. See IDOT Std 701901. Cost included in "TC&P, Std 701611".
- Type B Delineator. See IDOT Std 782006.

NOTE: All barricades, drums, vertical panels, cones and delineators shall be offset and spaced in accordance with IDOT Standard 701611 unless otherwise noted in the plans. Cost included in item "Traffic Control and Protection, Standard 701611".



MODEL: Default
 FILE NAME: I:\projects\Miscellaneous\2021\11\CA\dwg\10-64_MOT768-20011-0-region_IL-64-Hamc_Stage_1.dgn
 3230 Executive Drive, Joliet, Illinois 60431
 Ph: (815) 730-3444 Fax: (815) 730-6703
 LICENSE NO. 104-003209
 © 2020 HAMILTON CONSULTING ENGINEERS, INC.

HAMILTON CONSULTING ENGINEERS, INC.	USER NAME = mbuiting	DESIGNED -	REVISED -
	PLOT SCALE = 40.0000' / in.	DRAWN -	REVISED -
	PLOT DATE = 12/15/2021	CHECKED -	REVISED -
		DATE -	REVISED -

**STATE OF ILLINOIS
 DEPARTMENT OF TRANSPORTATION**

**IL 64 OVER ROCK RIVER, IL 72 OVER BLACK WALNUT & KILBUCK CREEKS
 TRAFFIC CONTROL STAGE 1 PLAN SHEET SN 071-0088**

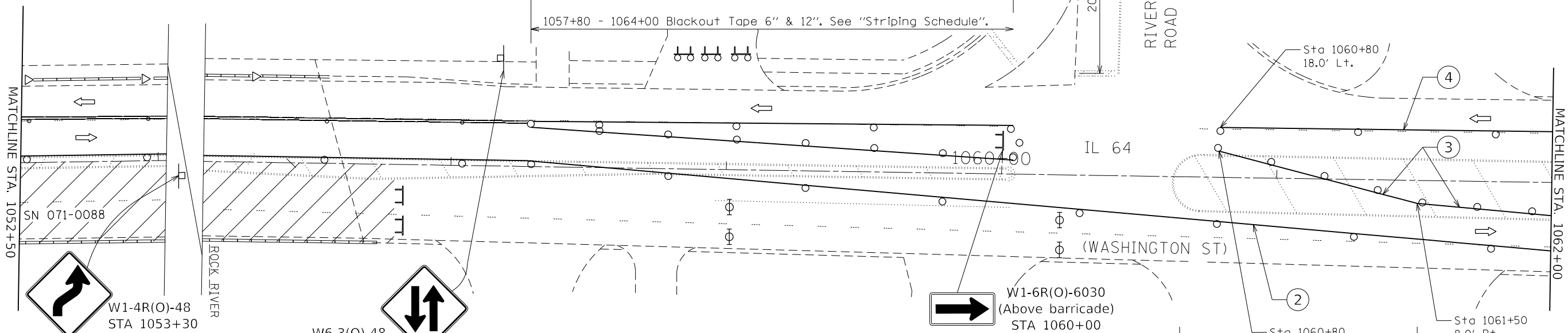
SCALE: 1"=20' SHEET OF 23 SHEETS STA. 1052+50 TO STA. 1070+80

F.A.P. RTE. 17A & 553	SECTION D2 BDR 2022-1	COUNTY OGLE	TOTAL SHEETS 23	SHEET NO. 8
CONTRACT NO. 64R34			ILLINOIS FED. AID PROJECT	

1047+50 - 1058+30: Drums spaced 50' & 4" White Temp Tape 3.0' Lt.
Tubular Markers spaced 50' & Double Yellow Temp Tape 15.0' Lt.
Type B Reflectors spaced 50' on Lt Bridge Parapet.

1058+30 - 1060+05: Drums spaced 50.0' & 4" Yellow Temp Tape 15.0' Lt.
Drums spaced 20.0' & 4" Yellow Temp Tape tapered 15.0' Lt - 5.0' Lt.
Drums spaced 50.0' & 4" White Temp Tape tapered 3.0' Lt - 10.0' Rt.

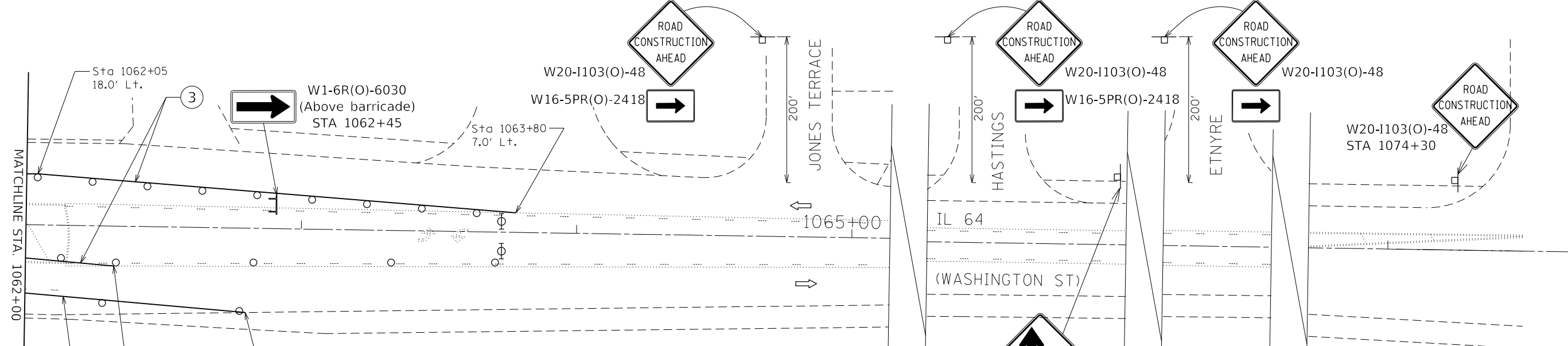
1057+80 - 1064+00 Blackout Tape 6" & 12". See "Striping Schedule".



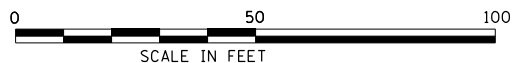
SYMBOLS

- Work area
- Drum with bi-directional steady burn warning light. See IDOT Std 701901.
- Tubular Marker. See IDOT Std 701901.
- Type III barricade with flashing lights. See IDOT Std 701901. Cost included in "TC&P, Std 701611".
- Std 701901. Cost included in "TC&P, Std 701611".
- Type III barricade. See IDOT Std 701901.
- Arrow board located in accordance with plans. Cost included in "TC&P, Std 701611".
- Sign on portable or permanent support.
- Type II barricade with flashing light. See IDOT Std 701901. Cost included in "TC&P, Std 701611".
- Type B Delineator. See IDOT Std 782006.

NOTE: All barricades, drums, vertical panels, cones and delineators shall be offset and spaced in accordance with IDOT Standard 701611 unless otherwise noted in the plans. Cost included in item "Traffic Control and Protection, Standard 701611".



- ③ 4" Yellow Pavement Marking Tape Straight Taper. Drums spaced 20'
- ② 4" White Pavement Marking Tape Straight Taper. Drums spaced 50'
- ④ 4" Yellow Pavement Marking Tape Straight Taper. Drums spaced 50'



MODEL: Default
FILE NAME: I:\projects\Miscellaneous\2019\11\11\CA\dwg\10 - Oregon IL 64-MOT Stage 2.dwg

HAMILTON CONSULTING ENGINEERS, INC.
3230 Executive Drive, Joliet, Illinois 60431
Ph: (815) 730-3444 Fax: (815) 730-6703
E-MAIL: hce@hceinc.com LICENSE NO. 194-003209
© 2020 HAMILTON CONSULTING ENGINEERS, INC.

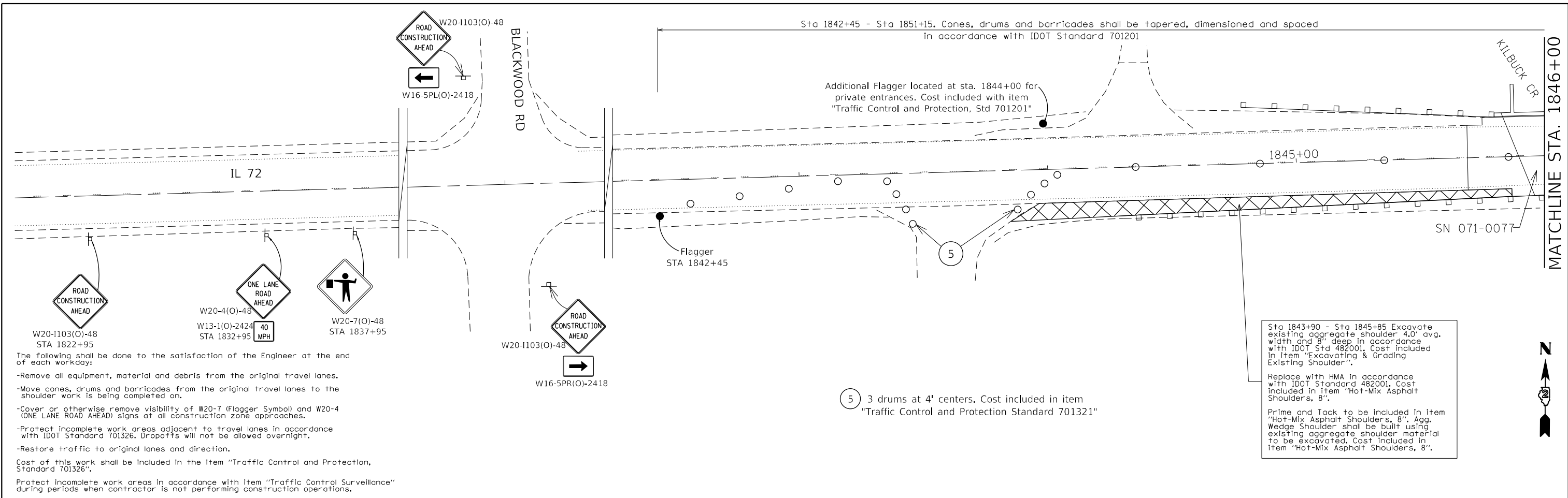
USER NAME = mbuiting	DESIGNED -	REVISED -
PLOT SCALE = 40.0000' / in.	DRAWN -	REVISED -
PLOT DATE = 12/15/2021	CHECKED -	REVISED -
	DATE -	REVISED -

**STATE OF ILLINOIS
DEPARTMENT OF TRANSPORTATION**

**IL 64 OVER ROCK RIVER, IL 72 OVER BLACK WALNUT & KILBUCK CREEKS
TRAFFIC CONTROL STAGE 2 PLAN SHEET SN 071-0088**

SCALE: 1"=20' SHEET OF 23 SHEETS STA. 1052+50 TO STA. 1070+80

F.A.P. RTE. 17A & 553	SECTION D2 BDR 2022-1	COUNTY OGLE	TOTAL SHEETS 23	SHEET NO. 10
ILLINOIS FED. AID PROJECT			CONTRACT NO. 64R34	

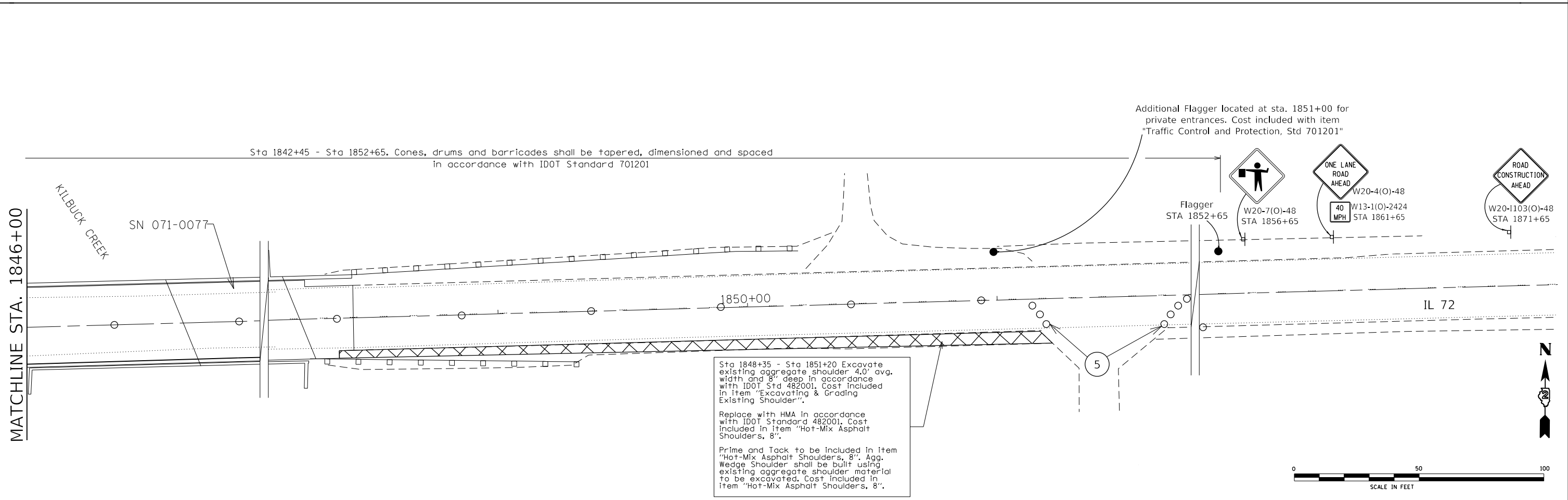


Sta 1843+90 - Sta 1845+85 Excavate existing aggregate shoulder 4.0' avg. width and 8" deep in accordance with IDOT Std 482001. Cost included in item "Excavating & Grading Existing Shoulder".

Replace with HMA in accordance with IDOT Standard 482001. Cost included in item "Hot-Mix Asphalt Shoulders, 8".

Prime and Tack to be included in item "Hot-Mix Asphalt Shoulders, 8". Agg. Wedge Shoulder shall be built using existing aggregate shoulder material to be excavated. Cost included in item "Hot-Mix Asphalt Shoulders, 8".

5 3 drums at 4' centers. Cost included in item "Traffic Control and Protection Standard 701321"



MODEL: D:\p1\11...
 FILE NAME: E:\Projects\Miscellaneous\20911-1\CAD\Draw 10 Davis.ctb IL 72 MATCHLINE STA. 1846+00
 © 2020 HAMILTON CONSULTING ENGINEERS, INC.

HAMILTON CONSULTING ENGINEERS, INC.
 3230 Executive Drive, Joliet, Illinois 60431
 Ph: (815) 730-3444 Fax: (815) 730-6703
 LICENSE NO. 184-003005

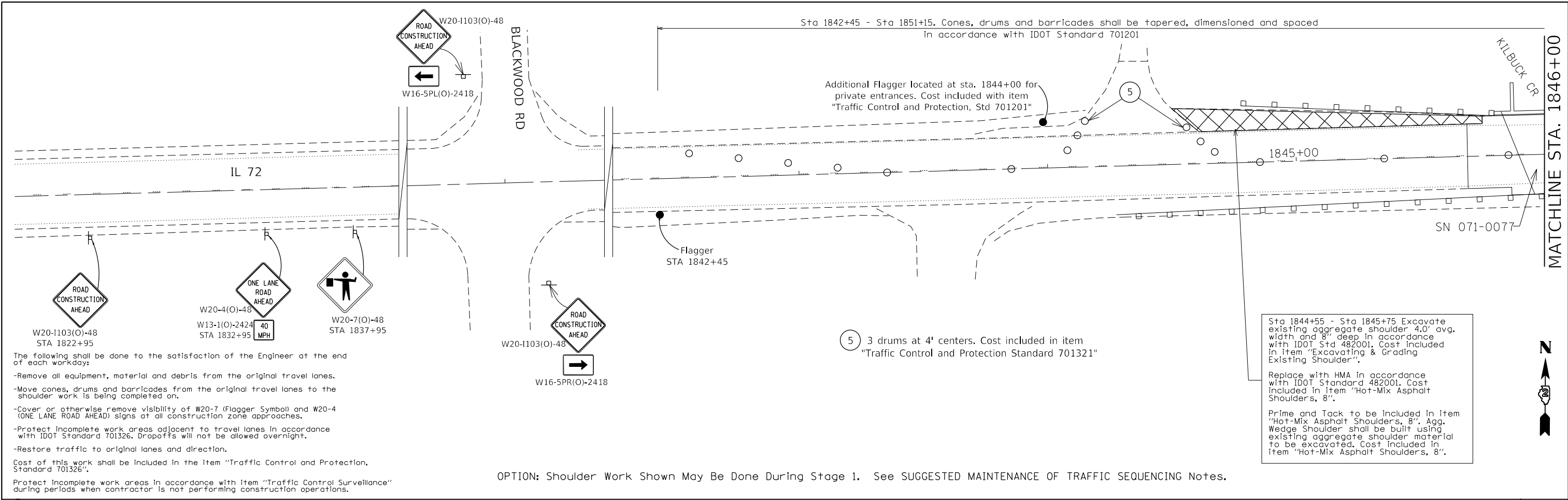
USER NAME = mibulding	DESIGNED -	REVISED -
PLOT SCALE = 40.0000 "/ in.	DRAWN -	REVISED -
PLOT DATE = 12/7/2021	CHECKED -	REVISED -
	DATE -	REVISED -

**STATE OF ILLINOIS
 DEPARTMENT OF TRANSPORTATION**

**IL 64 OVER ROCK RIVER. IL 72 OVER BLACK WALNUT & KILBUCK CREEKS
 TRAFFIC CONTROL PRE-STAGE PHASE 1 PLAN SHEET SN 071-0077**

SCALE: 1"=20' SHEET OF SHEETS STA. 1822+95 TO STA. 1871+65

F.A.P. RTE. 17	SECTION (102BR)RS	COUNTY OGLE	TOTAL SHEETS 23	SHEET NO. 11
CONTRACT NO. 64R33			ILLINOIS FED. AID PROJECT	



The following shall be done to the satisfaction of the Engineer at the end of each workday:

- Remove all equipment, material and debris from the original travel lanes.
- Move cones, drums and barricades from the original travel lanes to the shoulder work is being completed on.
- Cover or otherwise remove visibility of W20-7 (Flagger Symbol) and W20-4 (ONE LANE ROAD AHEAD) signs at all construction zone approaches.
- Protect incomplete work areas adjacent to travel lanes in accordance with IDOT Standard 701326. Dropoffs will not be allowed overnight.
- Restore traffic to original lanes and direction.

Cost of this work shall be included in the item "Traffic Control and Protection, Standard 701326".

Protect incomplete work areas in accordance with item "Traffic Control Surveillance" during periods when contractor is not performing construction operations.

OPTION: Shoulder Work Shown May Be Done During Stage 1. See SUGGESTED MAINTENANCE OF TRAFFIC SEQUENCING Notes.

MODEL: D:\p\h\i\... FILE NAME: E:\projects\miscellaneous\20911-1\CAD\Draw 10 Davis ILL 72 MO112-20911-Draws ILL 72-Pre-Stage 2.dwg

MATCHLINE STA. 1846+00

HAMILTON CONSULTING ENGINEERS, INC.
 3230 Executive Drive, Joliet, Illinois 60431
 Ph: (815) 730-3444 Fax: (815) 730-6703
 LICENSE NO. 184-002005
 © 2020 HAMILTON CONSULTING ENGINEERS, INC.

USER NAME = mibulding	DESIGNED -	REVISED -
PLOT SCALE = 40.0000' / in.	DRAWN -	REVISED -
PLOT DATE = 12/7/2021	CHECKED -	REVISED -
	DATE -	REVISED -

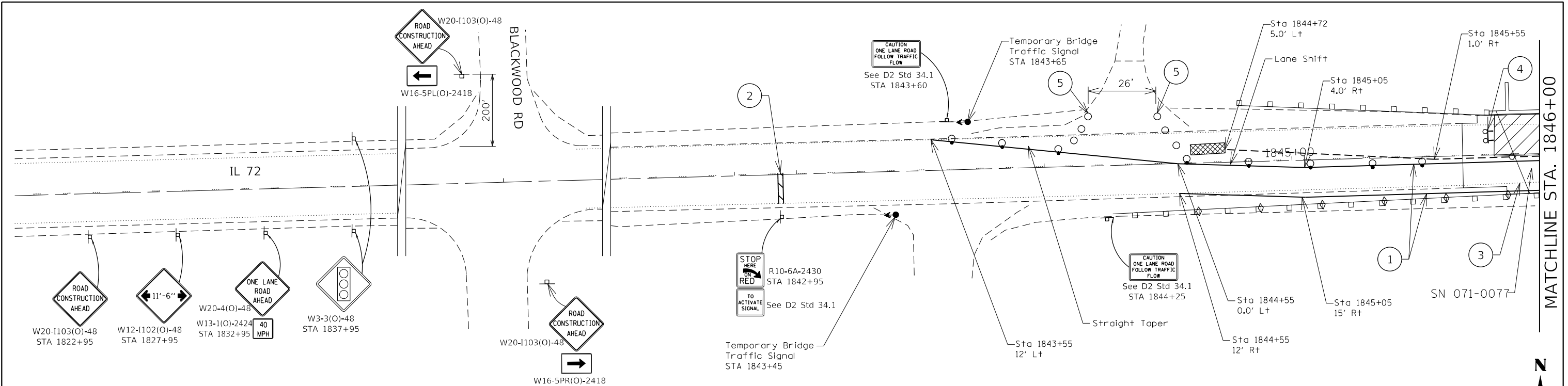
DESIGNED -	REVISED -
DRAWN -	REVISED -
CHECKED -	REVISED -
DATE -	REVISED -

**STATE OF ILLINOIS
DEPARTMENT OF TRANSPORTATION**

**IL 64 OVER ROCK RIVER. IL 72 OVER BLACK WALNUT & KILBUCK CREEKS
TRAFFIC CONTROL PRE-STAGE PHASE 2 PLAN SHEET SN 071-0077**

SCALE: 1"=20' SHEET OF SHEETS STA. 1822+95 TO STA. 1871+65

F.A.P. RTE.	SECTION	COUNTY	TOTAL SHEETS	SHEET NO.
17	(102BR)RS	OGLE	23	12
CONTRACT NO. 64R33			ILLINOIS FED. AID PROJECT	



MATCHLINE STA. 1846+00



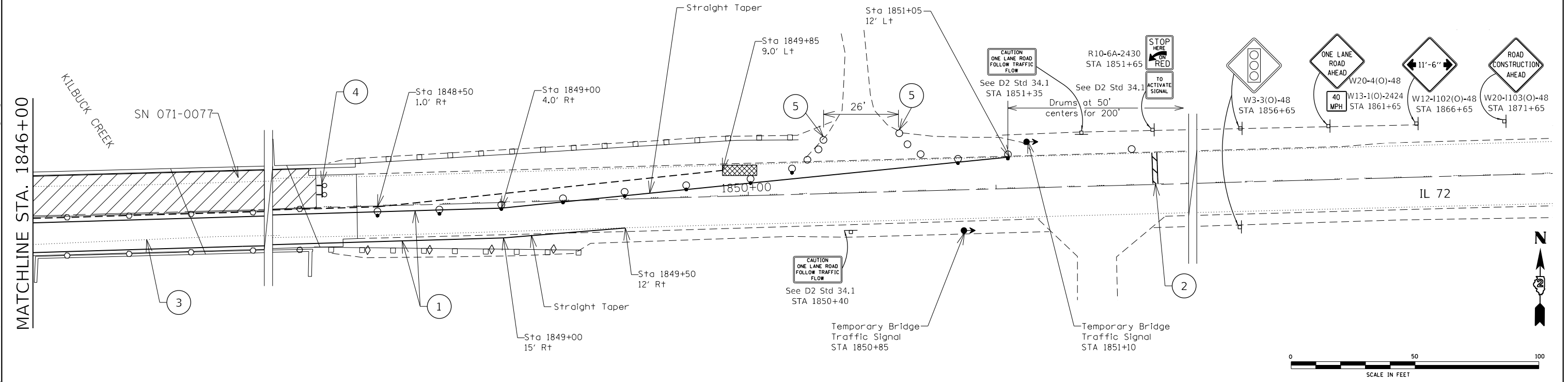
SYMBOLS

Work area	Temporary impact attenuator, non-redirective, test level 3.
Drum. See IDOT Std 701901.	Temp. concrete barrier. See IDOT Std 704001.
Drum with steady burning bi-directional light. See IDOT Std 701901.	Temporary bridge traffic signal.
Crystal, bidirectional guardrail/ bridge rail reflector, type A. See IDOT Std 782006.	Sign on portable or permanent support.
Type III barricade with flashing lights. See IDOT Std 701901.	Type C Reflector. Included in "Temporary Conc. Barrier" or paid as "Type C Reflector" when attached to perm. parapet. See IDOT Std 704001

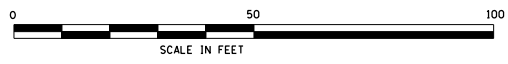
CALLOUT INDEX

- 1 Pavement Marking Tape, Type IV, 4" White
- 2 Pavement Marking Tape, Type IV, 24" White
- 3 Pavement Marking Blackout Tape, 6"
- 4 Type III Barricade to be placed when no work is being performed.
- 5 3 barrels at 4' centers. Cost included in item "Traffic Control and Protection Standard 701321"

NOTE: All barricades, drums, vertical panels and cones shall be offset and spaced in accordance with IDOT Standard 701321.



MATCHLINE STA. 1846+00



HAMILTON CONSULTING ENGINEERS, INC.
 3230 Executive Drive, Joliet, Illinois 60431
 Ph: (815) 730-3444 Fax: (815) 730-6703
 E-MAIL: info@hce.com License No. 184-003005
 © 2020 HAMILTON CONSULTING ENGINEERS, INC.

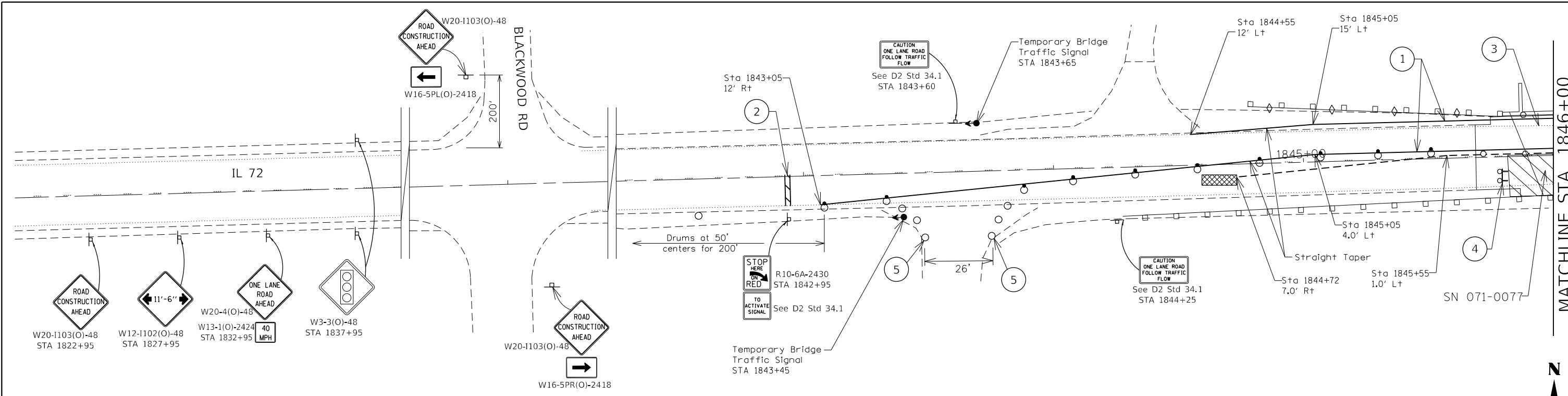
USER NAME = mibulitg	DESIGNED -	REVISED -
PLOT SCALE = 40.0000' / in.	DRAWN -	REVISED -
PLOT DATE = 12/15/2021	CHECKED -	REVISED -
	DATE -	REVISED -

**STATE OF ILLINOIS
DEPARTMENT OF TRANSPORTATION**

**IL 64 OVER ROCK RIVER. IL 72 OVER BLACK WALNUT & KILBUCK CREEKS
TRAFFIC CONTROL STAGE 1 PLAN SHEET SN 071-0077**

SCALE: 1"=20' SHEET OF SHEETS STA. 1822+95 TO STA. 1871+65

F.A.P. RTE. 17A & 553	SECTION D2 BDR 2022-1	COUNTY OGLE	TOTAL SHEETS 23	SHEET NO. 13
ILLINOIS FED. AID PROJECT			CONTRACT NO. 64R33	



MATCHLINE STA. 1846+00



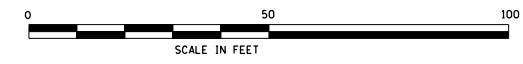
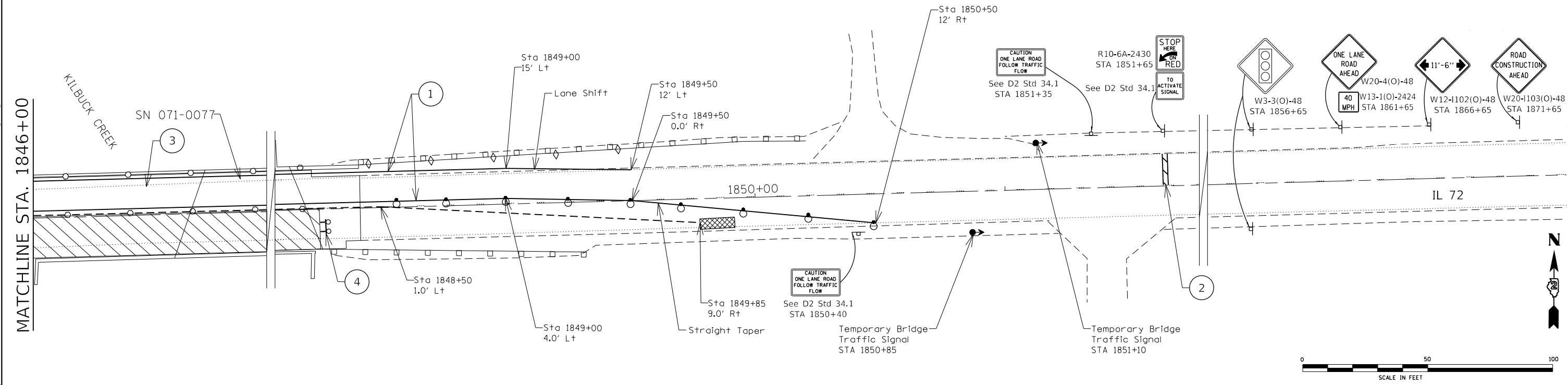
SYMBOLS

	Work area		Temporary impact attenuator, non-redirective, test level 3.
	Drum. See IDOT Std 701901.		Temp. concrete barrier. See IDOT Std 704001.
	Drum with steady burning bi-directional light. See IDOT Std 701901.		Temporary bridge traffic signal.
	Crystal, bidirectional guardrail/ bridge rail reflector, type A. See IDOT Std 782006.		Sign on portable or permanent support.
	Type III barricade with flashing lights. See IDOT Std 701901.		Type C Reflector. Included in "Temporary Conc. Barrier" or paid as "Type C Reflector" when attached to perm. parapet. See IDOT Std 704001

CALLOUT INDEX

- 1 Pavement Marking Tape, Type IV, 4" White
- 2 Pavement Marking Tape, Type IV, 24" White
- 3 Pavement Marking Blackout Tape, 6"
- 4 Type III Barricade to be placed when no work is being performed.
- 5 3 barrels at 4' centers. Cost included in item "Traffic Control and Protection Standard 701321"

NOTE: All barricades, drums, vertical panels and cones shall be offset and spaced in accordance with IDOT Standard 701321.



MODEL: D:\p\h\i\... FILE NAME: E:\projects\Miscellaneous\2021\11-1\CAD\Draw 10 Davis Ict IL 72 MDT\11-2021\1-Dwgs Ict IL 72 Stage 2.dwg

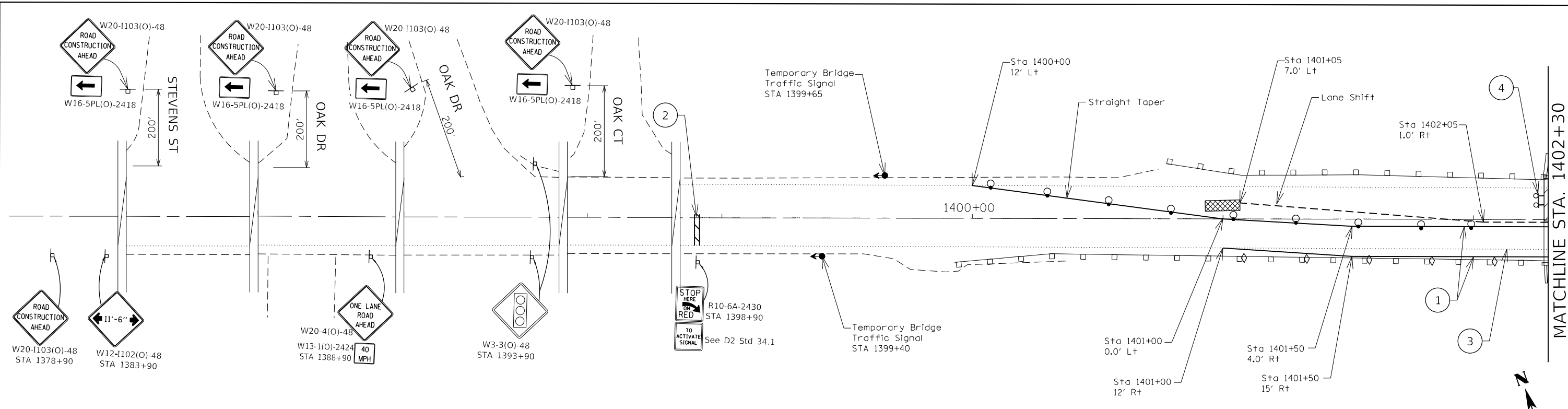
HAMILTON CONSULTING ENGINEERS, INC.
 3230 Executive Drive, Joliet, Illinois 60431
 Ph: (815) 730-3444 Fax: (815) 730-6703
 LICENSE NO. 184-003005
 © 2020 HAMILTON CONSULTING ENGINEERS, INC.

USER NAME = mibulding	DESIGNED -	REVISED -
PLOT SCALE = 40.0000 ' / in.	DRAWN -	REVISED -
PLOT DATE = 12/15/2021	CHECKED -	REVISED -
	DATE -	REVISED -

STATE OF ILLINOIS DEPARTMENT OF TRANSPORTATION

IL 64 OVER ROCK RIVER. IL 72 OVER BLACK WALNUT & KILBUCK CREEKS
TRAFFIC CONTROL STAGE 2 PLAN SHEET SN 071-0077
 SCALE: 1"=20' SHEET OF SHEETS STA. 1822+95 TO STA. 1871+65

F.A.P. RTE. 17A & 553	SECTION D2 BDR 2022-1	COUNTY OGLE	TOTAL SHEETS 23	SHEET NO. 14
CONTRACT NO. 64R33			ILLINOIS FED. AID PROJECT	



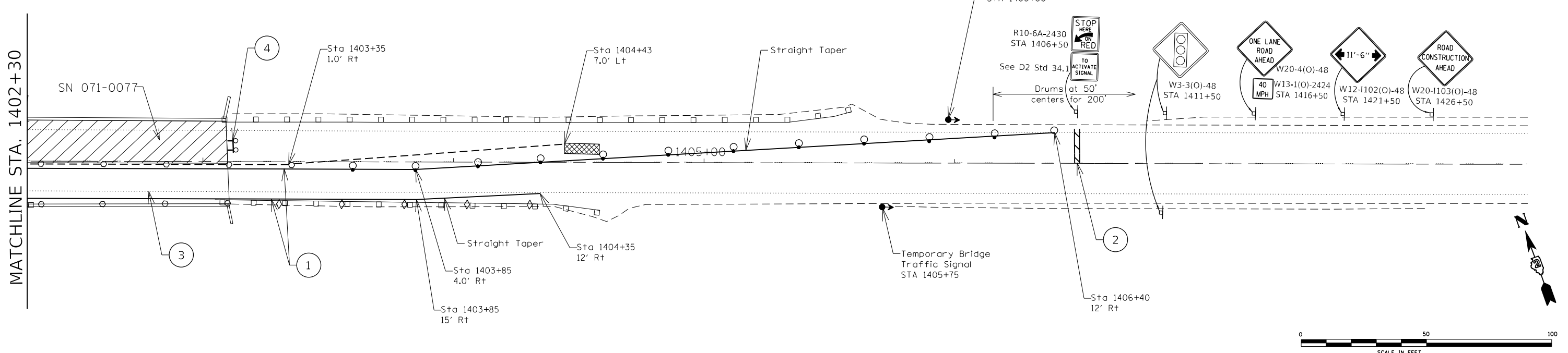
NOTE: All barricades, drums, vertical panels and cones shall be offset and spaced in accordance with IDOT Standard 701321.

SYMBOLS

	Work area		Temporary impact attenuator, non-redirective, test level 3.
	Drum. See IDOT Std 701901.		Temp. concrete barrier. See IDOT Std 704001.
	Drum with steady burning bi-directional light. See IDOT Std 701901.		Temporary bridge traffic signal.
	Crystal, bidirectional guardrail/ bridge rail reflector, type A. See IDOT Std 782006.		Sign on portable or permanent support.
	Type III barricade with flashing lights. See IDOT Std 701901.		Type C Reflector. Included in "Temporary Conc. Barrier" or paid as "Type C Reflector" when attached to perm. parapet. See IDOT Std 704001

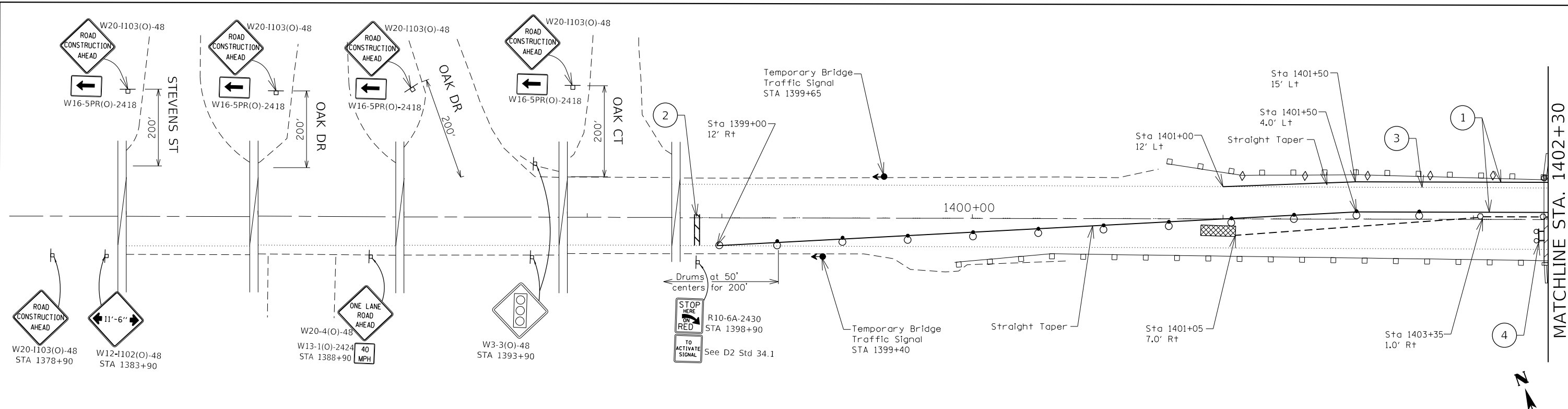
CALLOUT INDEX

- 1 Pavement Marking Tape, Type IV, 4" White
- 2 Pavement Marking Tape, Type IV, 24" White
- 3 Pavement Marking Blackout Tape, 6"
- 4 Type III Barricade to be placed when no work is being performed.



MODEL: Default
FILE NAME: E:\projects\Miscellaneous\20911\1\CAD\wo10_Sullivan_Valley_IL_72_Stage_1.dgn
© 2020 HAMILTON CONSULTING ENGINEERS, INC.

HAMILTON CONSULTING ENGINEERS, INC. <small>3230 Executive Drive, Joliet, Illinois 60431 Ph: (815) 730-3444 Fax: (815) 730-6703 LICENSE NO. 184-023295 © 2020 HAMILTON CONSULTING ENGINEERS, INC.</small>	USER NAME = mbuting	DESIGNED -	REVISED -	STATE OF ILLINOIS DEPARTMENT OF TRANSPORTATION	IL 64 OVER ROCK RIVER. IL 72 OVER BLACK WALNUT & KILBUCK CREEKS TRAFFIC CONTROL STAGE 1 PLAN SHEET SN 071-0084	F.A.P. RTE. 17	SECTION (102BR)RS	COUNTY OGLE	TOTAL SHEETS 23	SHEET NO. 15
	PLOT SCALE = 40,0000' / in.	CHECKED -	REVISED -			SCALE: 1"=20'	SHEET OF SHEETS	STA. 1378+90 TO STA. 1426+50	CONTRACT NO. 64R33	
	PLOT DATE = 12/7/2021	DATE -	REVISED -							



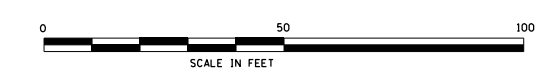
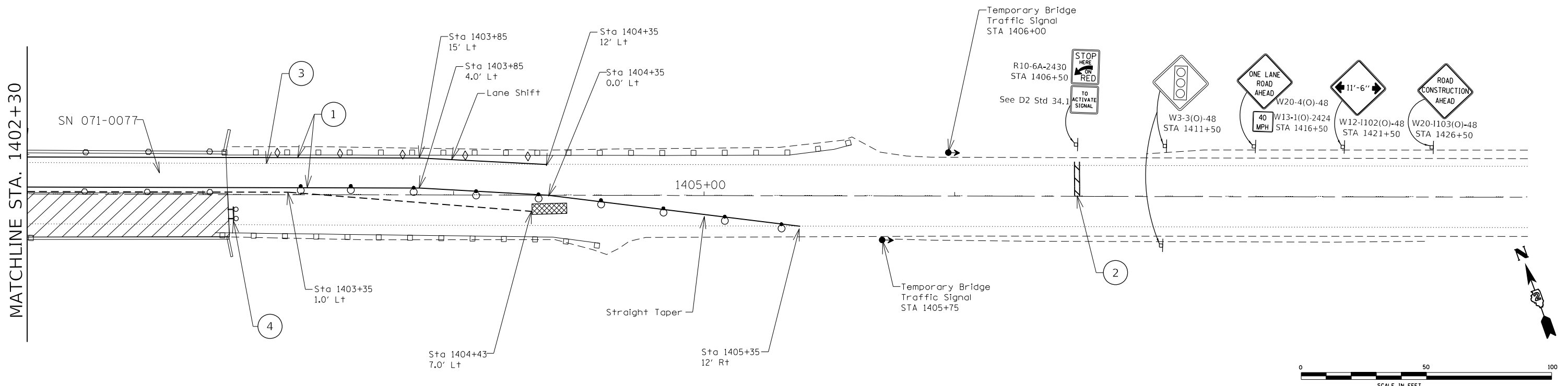
NOTE: All barricades, drums, vertical panels and cones shall be offset and spaced in accordance with IDOT Standard 701321.

SYMBOLS

	Work area		Temporary impact attenuator, non-redirective, test level 3.
	Drum. See IDOT Std 701901.		Temp. concrete barrier. See IDOT Std 704001.
	Drum with steady burning bi-directional light. See IDOT Std 701901.		Temporary bridge traffic signal.
	Crystal, bidirectional guardrail/ bridge rail reflector, type A. See IDOT Std 782006.		Sign on portable or permanent support.
	Type III barricade with flashing lights. See IDOT Std 701901.		Type C Reflector. Included in "Temporary Conc. Barrier" or paid as "Type C Reflector" when attached to perm. parapet. See IDOT Std 704001

CALLOUT INDEX

- 1 Pavement Marking Tape, Type IV, 4" White
- 2 Pavement Marking Tape, Type IV, 24" White
- 3 Pavement Marking Blackout Tape, 6"
- 4 Type III Barricade to be placed when no work is being performed.



MODEL: Default
FILE NAME: E:\projects\miscellaneous\20911\1\CAD\wo10_Sullivan_Valley_IL_72_Stage_2.dgn
3230 Executive Drive, Joliet, Illinois 60431
Ph: (815) 730-3444 Fax: (815) 730-6703
LICENSING NO. 184-023295
© 2020 HAMILTON CONSULTING ENGINEERS, INC.

HAMILTON CONSULTING ENGINEERS, INC.

USER NAME = mbuting	DESIGNED -	REVISED -
PLOT SCALE = 40,0000 ' / in.	DRAWN -	REVISED -
PLOT DATE = 12/7/2021	CHECKED -	REVISED -
	DATE -	REVISED -

**STATE OF ILLINOIS
DEPARTMENT OF TRANSPORTATION**

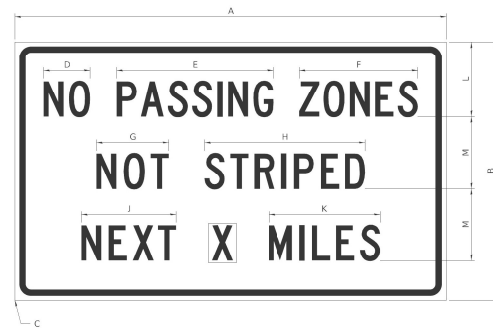
**IL 64 OVER ROCK RIVER, IL 72 OVER BLACK WALNUT & KILBUCK CREEKS
SN 071-0084 (IL 72 at BLACK WALNUT CR) TRAFFIC CONTROL STAGE 2 PLAN SHEET**

SCALE: 1"=20' SHEET OF SHEETS STA. 1378+90 TO STA. 1426+50

F.A.P. RTE. 17	SECTION (102BR)RS	COUNTY OGLE	TOTAL SHEETS 23	SHEET NO. 16
ILLINOIS FED. AID PROJECT			CONTRACT NO. 64R33	

WORK ZONE SIGN DETAILS

ILLINOIS STANDARD G20-1100



SIGN SIZE	DIMENSIONS											
	A	B	C	D	E	F	G	H	J	K	L	M
60 x 36	60.00	36.00	2.25	6.4	21.80	16.40	10.00	22.40	13.20	15.50	10.50	10.00

SIGN SIZE	SERIES BY LINE			MARGIN	BORDER
	1	2	3		
60 x 36	5C	5C	5C	0.625	0.875

GENERAL NOTES
All work to furnish and install these signs shall be included in the cost of the specified traffic control standards and shall not be paid separately. All Illinois Standard signs shall conform to the latest edition of the "Illinois Standard Highway Signs Book" in effect on the date of invitation for bids. Signs shall meet the applicable portions of Sections 701 and 720 of the Standard Specifications. All dimensions are in inches unless otherwise noted.

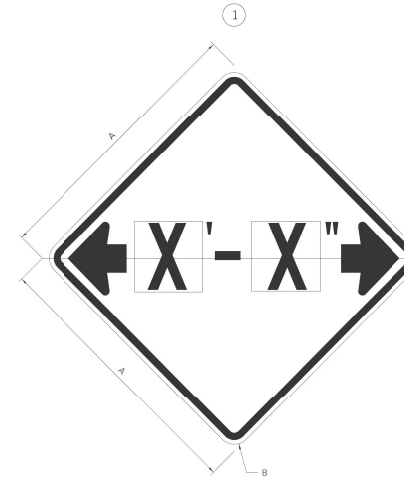
Sign not to scale

USER NAME = mibulding	DESIGNED =	REVISED = 340-16	STATE OF ILLINOIS DEPARTMENT OF TRANSPORTATION	REGION 2 / DISTRICT 2 STANDARD	F.A.P. RTE.	SECTION	COUNTY	TOTAL SHEETS	SHEET NO.
PLOT SCALE = 1:100000	DRAWN =	REVISIONS =							
PLOT DATE = 12/3/2021	CHECKED =	DATE =							

WORK ZONE SIGN DETAILS SHEET 1 OF 4 34.1

WORK ZONE SIGN DETAILS

ILLINOIS STANDARD W12-1102



SIGN SIZE	DIMENSIONS	
	A	B
48 x 48	48.00	3.00

SIGN SIZE	SERIES BY LINE			MARGIN	BORDER
	1	2	3		
48 x 48	12C			0.750	1.250

GENERAL NOTES
All work to furnish and install these signs shall be included in the cost of the specified traffic control standards and shall not be paid separately. All Illinois Standard signs shall conform to the latest edition of the "Illinois Standard Highway Signs Book" in effect on the date of invitation for bids. Signs shall meet the applicable portions of Sections 701 and 720 of the Standard Specifications. All dimensions are in inches unless otherwise noted.

Illinois Standard signs W12-1102 and W12-1103 shall be used as described in the special provisions.

Sign not to scale

USER NAME = mibulding	DESIGNED =	REVISED = 340-16	STATE OF ILLINOIS DEPARTMENT OF TRANSPORTATION	REGION 2 / DISTRICT 2 STANDARD	F.A.P. RTE.	SECTION	COUNTY	TOTAL SHEETS	SHEET NO.
PLOT SCALE = 1:100000	DRAWN =	REVISIONS =							
PLOT DATE = 12/3/2021	CHECKED =	DATE =							

WORK ZONE SIGN DETAILS SHEET 2 OF 4 34.1

WORK ZONE SIGN DETAILS

ROAD CLOSED TO OVERSIZED LOADS



SIGN SIZE	DIMENSIONS											
	A	B	C	D	E	F	G	H	J	K	L	M
24 x 24	24.00	24.00	4.00	4.00	4.00	4.00	4.00	4.00	4.00	4.00	4.00	4.00

SIGN SIZE	SERIES BY LINE			MARGIN	BORDER
	1	2	3		
24 x 24	4C	4C	4C		

GENERAL NOTES
All work to furnish and install these signs shall be included in the cost of the specified traffic control standards and shall not be paid separately. All Illinois Standard signs shall conform to the latest edition of the "Illinois Standard Highway Signs Book" in effect on the date of invitation for bids. Signs shall meet the applicable portions of Sections 701 and 720 of the Standard Specifications. All dimensions are in inches unless otherwise noted.

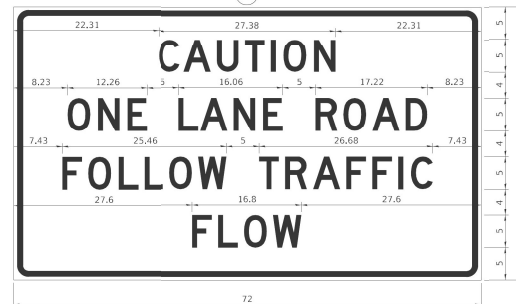
Sign not to scale

USER NAME = mibulding	DESIGNED =	REVISED = 340-16	STATE OF ILLINOIS DEPARTMENT OF TRANSPORTATION	REGION 2 / DISTRICT 2 STANDARD	F.A.P. RTE.	SECTION	COUNTY	TOTAL SHEETS	SHEET NO.
PLOT SCALE = 1:100000	DRAWN =	REVISIONS =							
PLOT DATE = 12/3/2021	CHECKED =	DATE =							

WORK ZONE SIGN DETAILS SHEET 3 OF 4 34.1

WORK ZONE SIGN DETAILS

ENTRANCE SIGN FOR USE WITH TEMPORARY SIGNALS



SIGN SIZE	DIMENSIONS											
	A	B	C	D	E	F	G	H	J	K	L	M
72 x 42	72.00	42.00	8.23	12.26	3.00	16.06	5.00	17.22	8.23	7.43	25.46	26.68

SIGN SIZE	SERIES BY LINE			MARGIN	BORDER
	1	2	3		
72 x 42	3.05	4.1E	0.94	3.36	3.04

This sign shall be installed at entrances located between the temporary signals as shown in the staging plans.

GENERAL NOTES
All work to furnish and install these signs shall be included in the cost of the specified traffic control standards and shall not be paid separately. All Illinois Standard signs shall conform to the latest edition of the "Illinois Standard Highway Signs Book" in effect on the date of invitation for bids. Signs shall meet the applicable portions of Sections 701 and 720 of the Standard Specifications. All dimensions are in inches unless otherwise noted.

USER NAME = mibulding	DESIGNED =	REVISED = 340-16	STATE OF ILLINOIS DEPARTMENT OF TRANSPORTATION	REGION 2 / DISTRICT 2 STANDARD	F.A.P. RTE.	SECTION	COUNTY	TOTAL SHEETS	SHEET NO.
PLOT SCALE = 1:100000	DRAWN =	REVISIONS =							
PLOT DATE = 12/3/2021	CHECKED =	DATE =							

WORK ZONE SIGN DETAILS SHEET 4 OF 4 34.1

STOP LINE SIGN FOR TEMPORARY SIGNALS



SIGN SIZE	SERIES BY LINE			MARGIN	BORDER
	1	2	3		
24 x 24	4C	4C	4C		

Sign not to scale

HAMILTON CONSULTING ENGINEERS, INC.
3230 Executive Drive, Joliet, Illinois 60431
Ph: (815) 730-3444 Fax: (815) 730-6703
E LICENSE NO. 184-003005
© 2020 HAMILTON CONSULTING ENGINEERS, INC.

USER NAME = mibulding	DESIGNED =	REVISED =
DRAWN = DWS	CHECKED =	REVISIONS =
PLOT SCALE = 1:100,0000	CHECKED =	REVISIONS =
PLOT DATE = 12/3/2021	DATE =	REVISIONS =

STATE OF ILLINOIS
DEPARTMENT OF TRANSPORTATION

IL 64 OVER ROCK RIVER. IL 72 OVER BLACK WALNUT & KILBUCK CREEKS
DISTRICT 2 STANDARD 34.1

SCALE: NA SHEET 2 OF SHEETS STA. TO STA.

F.A.P. RTE.	SECTION	COUNTY	TOTAL SHEETS	SHEET NO.
17	D2 BDR 2022-1	OGLE	23	17
CONTRACT NO. 64R34				
ILLINOIS FED. AID PROJECT				

GENERAL NOTES

The Structure Numbers shall remain SN 071-0077, 071-0084 and 071-0088 .
 Plan dimensions and details relative to the existing plans are subject to nominal construction variations. The Contractor shall field verify existing dimensions and details affecting new construction and make necessary approved adjustments prior to construction or ordering materials. Such variations shall not be cause for additional compensation for a change in scope of the work, however, the Contractor will be paid for the quantity actually furnished at the unit price bid for the work.
 Traffic will be maintained using staged construction.

SCOPE OF WORK

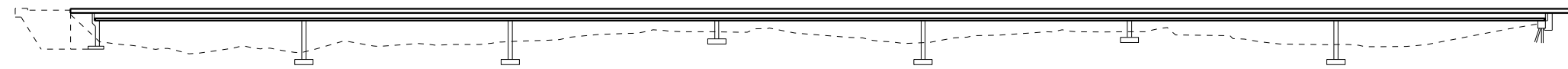
Ⓐ - Deck Slab Repair

TOTAL BILL OF MATERIAL (3 STRUCTURES)

Item	Unit	Total Quantity
Deck Slab Repair (Partial)	Sq. Yd.	730

BILL OF MATERIAL (SN 071-0088)

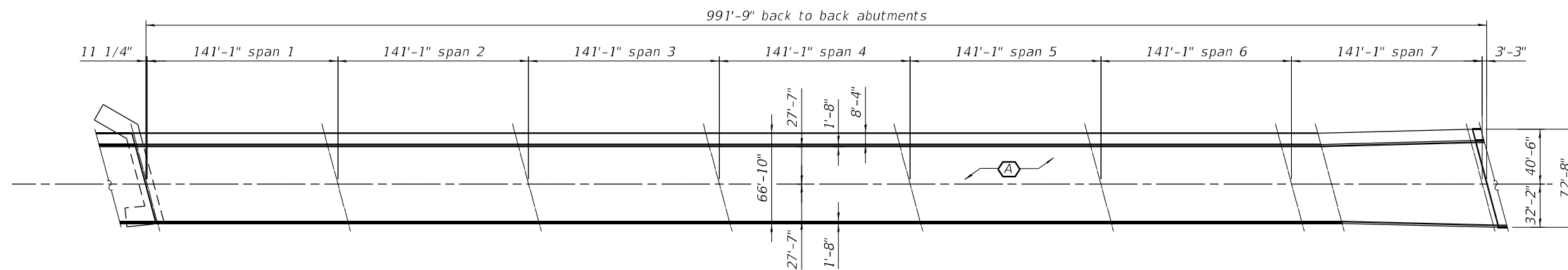
Item	Unit	Total Quantity
Deck Slab Repair (Partial)	Sq. Yd.	322



ELEVATION



10-26-21
 EXP 11-30-22



PLAN



MODEL: Default
 FILE NAME: \\kpf.com\dfs\Brdge\2100462 (WOC #10 64R34)\071-0088\02_Design (MS)\18 64R34\071-0088 Plan and Elevation.dgn
 12/15/2021 2:41:02 PM

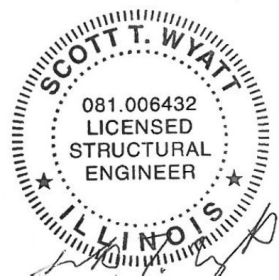


USER NAME =	DESIGNED -	REVISED -
PLOT SCALE =	CHECKED -	REVISED -
PLOT DATE =	DRAWN -	REVISED -
	CHECKED -	REVISED -

STATE OF ILLINOIS
 DEPARTMENT OF TRANSPORTATION

IL ROUTE 64 OVER TEH ROCK RIVER
 PLAN AND ELEVATION 071-0088

F.A. RTE.	SECTION	COUNTY	TOTAL SHEETS	SHEET NO.
17A & 553	D2 BDR 2022-1	OGLE	23	18
CONTRACT NO. 64R34				
ILLINOIS FED. AID PROJECT				



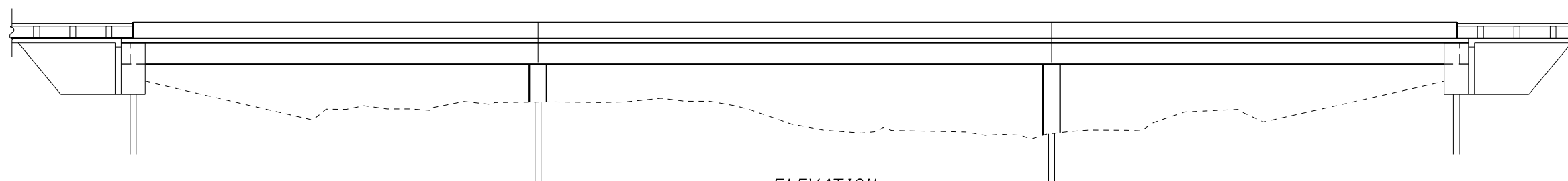
10-26-21
EXP 11-30-22

SCOPE OF WORK

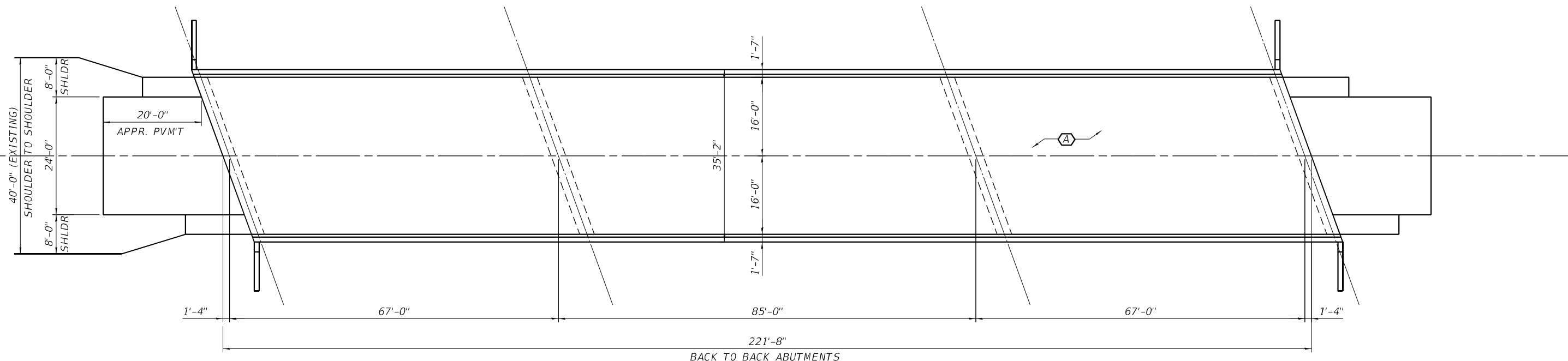
Ⓐ - Deck Slab Repair

BILL OF MATERIAL (SN 071-0077)

Item	Unit	Total Quantity
Deck Slab Repair (Partial)	Sq. Yd.	345



ELEVATION



PLAN

MODEL: Default
FILE NAME: \\kpf.com\dfs\bridge\2100482 (WCO #10 64R34)\071-0077_02_Design (MS)\64R34-071-0077_Plan and Elevation.dgn
12/15/2021 2:36:31 PM

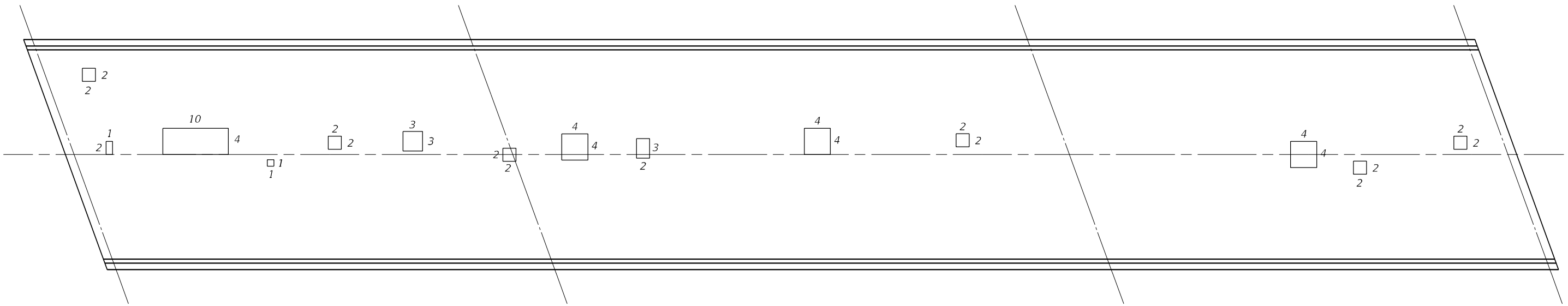
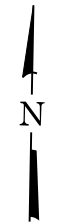


USER NAME =	DESIGNED -	REVISED -
PLOT SCALE =	CHECKED -	REVISED -
PLOT DATE =	DRAWN -	REVISED -
	CHECKED -	REVISED -

STATE OF ILLINOIS
DEPARTMENT OF TRANSPORTATION

IL ROUTE 72 OVER KILBUCK CREEK
PLAN AND ELEVATION 071-0077

F.A. RTE.	SECTION	COUNTY	TOTAL SHEETS	SHEET NO.
17A & 553	D2 BDR 2022-1	OGLE	23	20
CONTRACT NO. 64R34				
ILLINOIS FED. AID PROJECT				



DECK REPAIRS

MODEL: Default
 FILE NAME: \\kpf.com\dfs\Bridges\100462 (WCO #10 64R34)\071-0077\02_Design (MS)\64R34-071-0077 Deck Repairs.dgn
 12/6/2021 12:23:51 PM

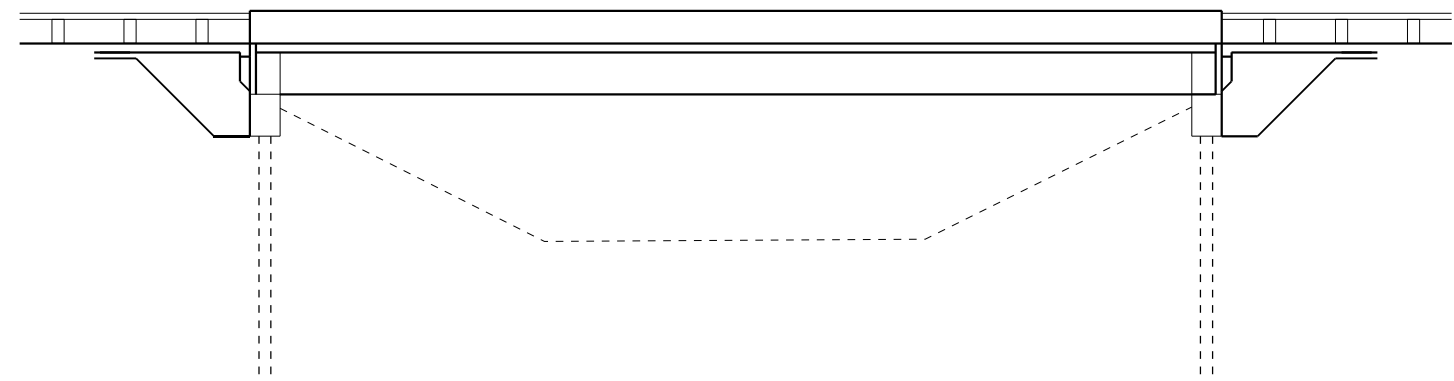
kpff
 Consulting Engineers
 1560 Sherman Ave.
 Suite 1020

USER NAME =	DESIGNED -	REVISED -
PLOT SCALE =	CHECKED -	REVISED -
PLOT DATE =	DRAWN -	REVISED -
	CHECKED -	REVISED -

**STATE OF ILLINOIS
 DEPARTMENT OF TRANSPORTATION**

**IL ROUTE 72 OVER KILBUCK CREEK
 DECK REPAIRS 071-0077**

F.A. RTE.	SECTION	COUNTY	TOTAL SHEETS	SHEET NO.
17A & 553	D2 BDR 2022-1	OGLE	23	21
CONTRACT NO. 64R34				
ILLINOIS FED. AID PROJECT				



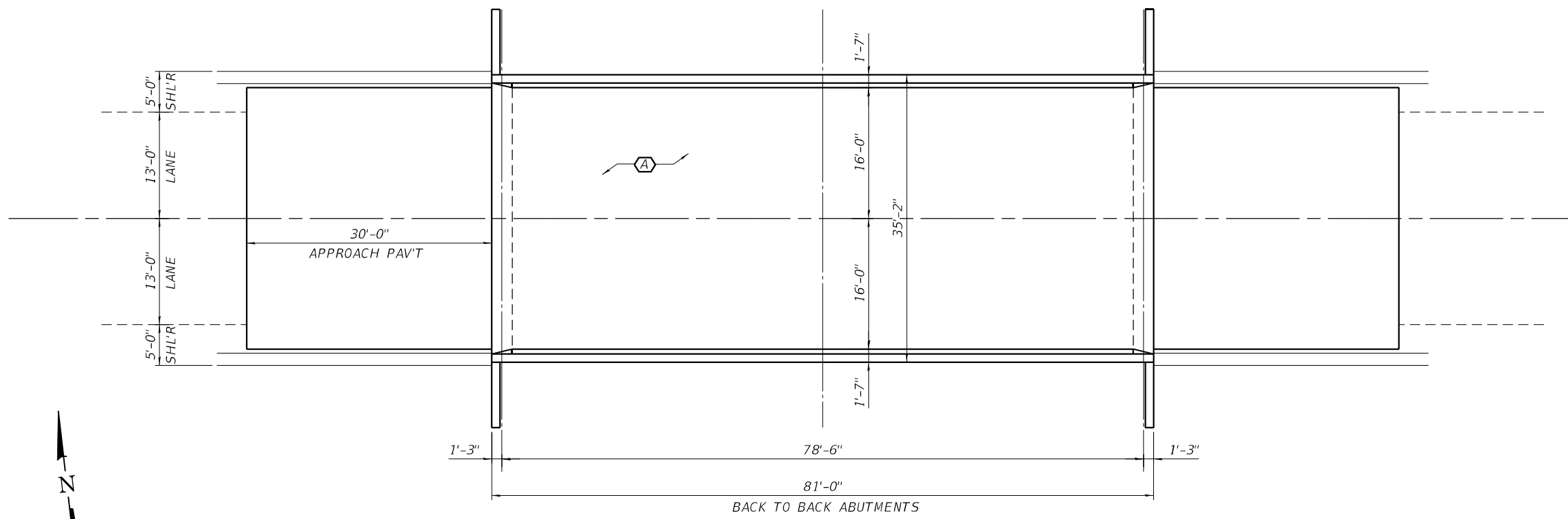
ELEVATION

BILL OF MATERIAL (SN 071-0084)

Item	Unit	Total Quantity
Deck Slab Repair (Partial)	Sq. Yd.	63

SCOPE OF WORK

Ⓐ - Deck Slab Repair



PLAN



10-26-21
EXP 11-30-22

MODEL: Default
FILE NAME: \\kpf.com\dis\Brdge\2100482 (WO #10 64R34)\071-0084\02_Design (MS)\64R34-071-0084 Plan and Elevation.dgn
12/15/2021 2:38:34 PM

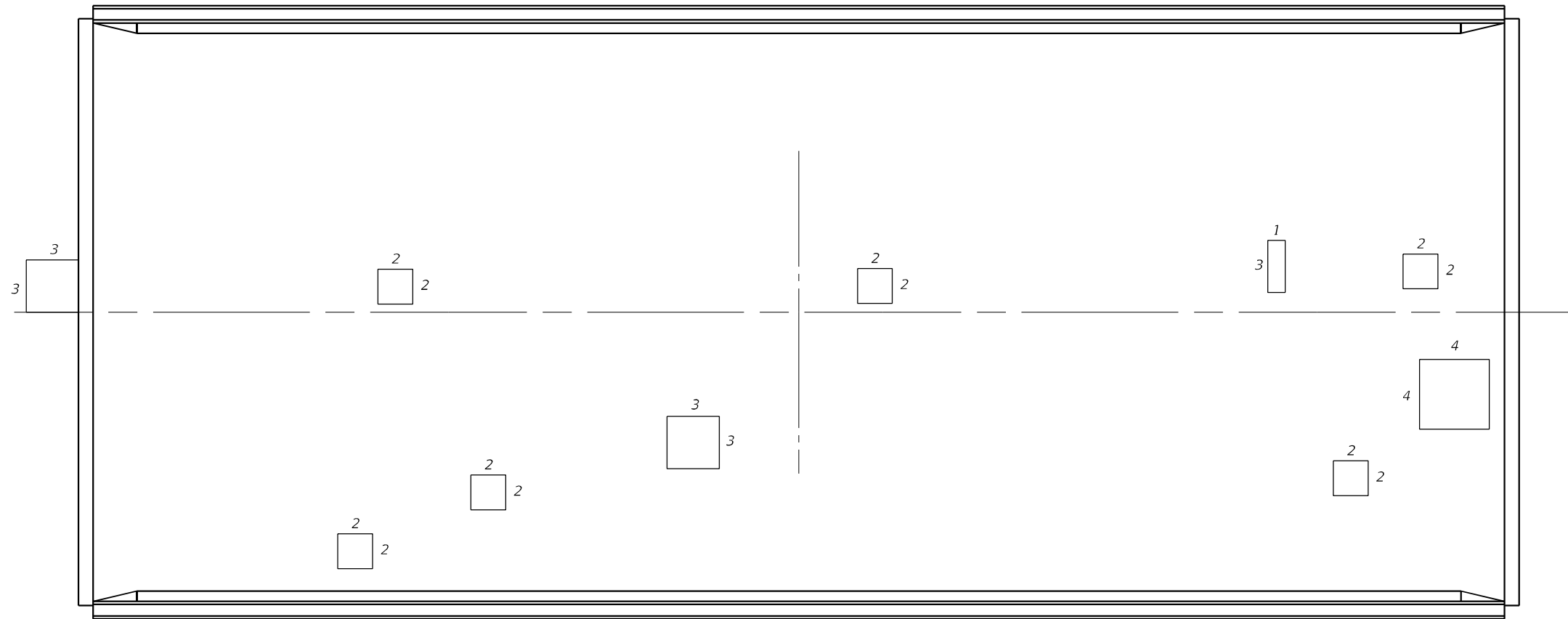
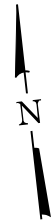


USER NAME =	DESIGNED -	REVISED -
PLOT SCALE =	CHECKED -	REVISED -
PLOT DATE =	DRAWN -	REVISED -
	CHECKED -	REVISED -

STATE OF ILLINOIS
DEPARTMENT OF TRANSPORTATION

IL ROUTE 72 OVER BLACK WALNUT CREEK
PLAN AND ELEVATION 071-0084

F.A. RTE.	SECTION	COUNTY	TOTAL SHEETS	SHEET NO.
17A & 553	D2 BDR 2022-1	OGLE	23	22
CONTRACT NO. 64R34				
ILLINOIS FED. AID PROJECT				



DECK REPAIRS

MODEL: Default
 FILE NAME: \\kpff.com\dfs\Bridges\2100462 (WCO #10 64R34)\071-0084\02_Design (MS)\64R34-071-0084 Deck Repairs.dgn

USER NAME =	DESIGNED -	REVISED -
PLOT SCALE =	CHECKED -	REVISED -
PLOT DATE =	DRAWN -	REVISED -
	CHECKED -	REVISED -

F.A. RTE.	SECTION	COUNTY	TOTAL SHEETS	SHEET NO.
17A & 553	D2 BDR 2022-1	OGLE	23	23
CONTRACT NO. 64R34				
ILLINOIS FED. AID PROJECT				