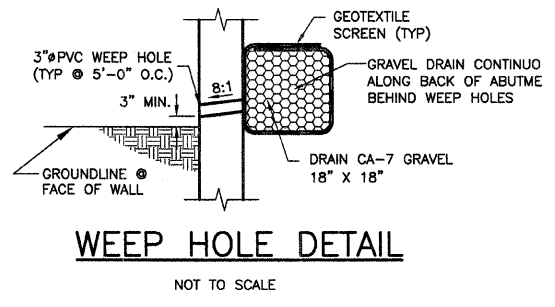
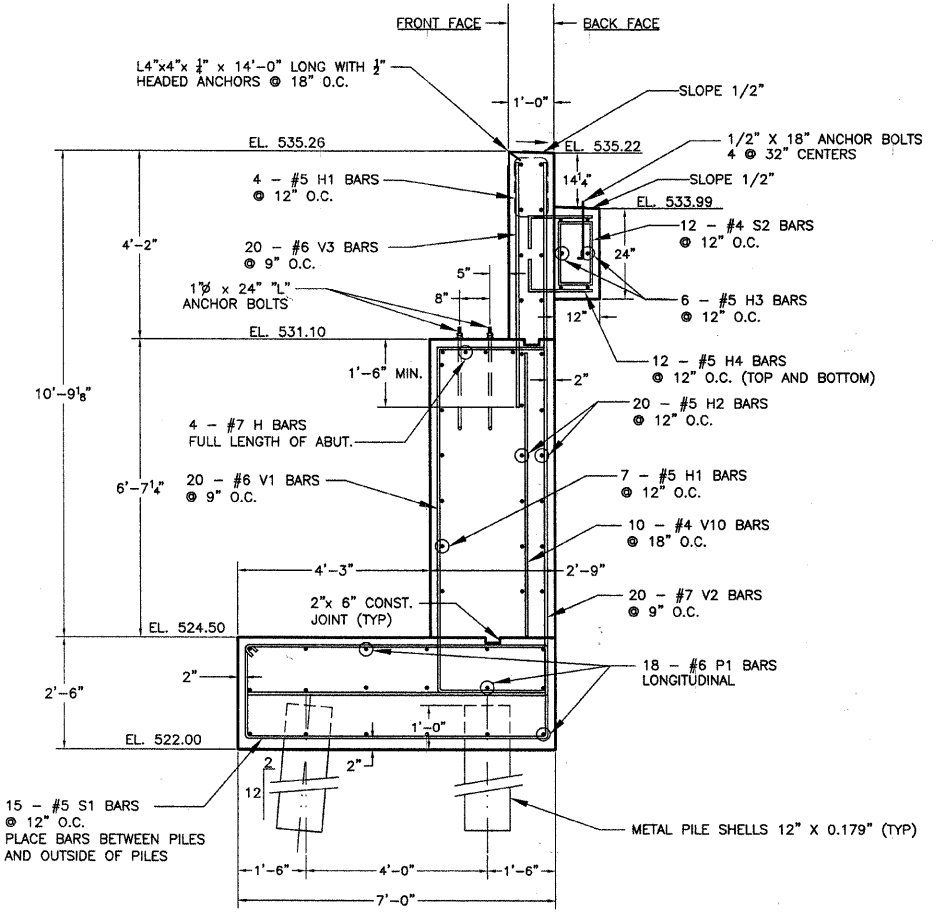


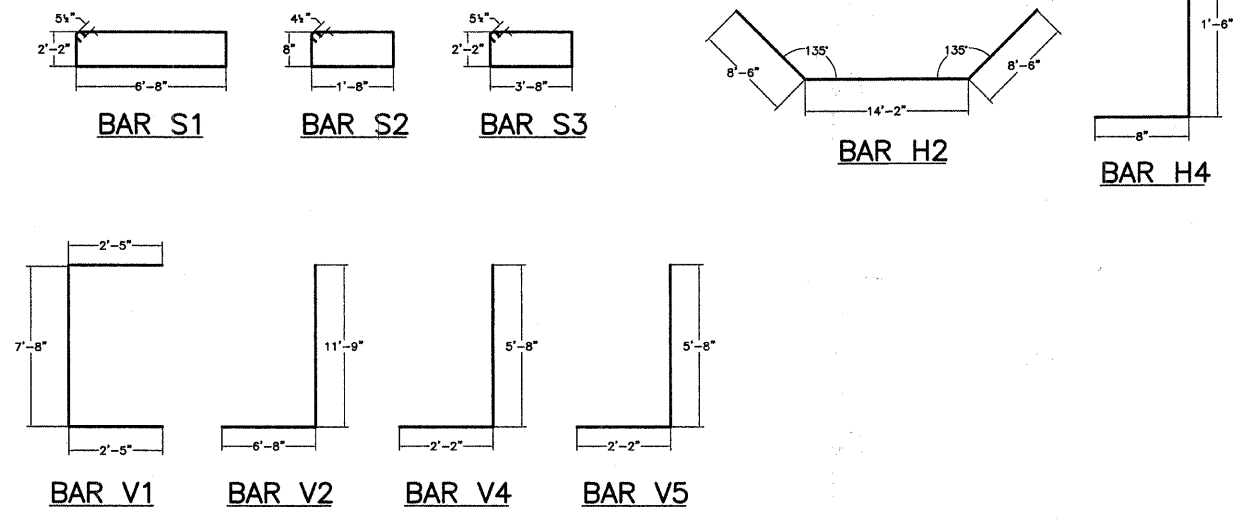
TYPICAL WINGWALL SECTION



WEEP HOLE DETAIL



TYPICAL ABUTMENT SECTION



BENT BAR DETAILS

BILL OF MATERIAL
For One Abutment

Bar	No.	Size	Length	Shape
H	4	#7	13'-8"	—
H1	11	#5	13'-8"	—
H2	20	#5	31'-2"	—
H3	6	#5	10'-8"	—
H4	24	#5	2'-2"	—
P1	18	#6	13'-8"	—
P2	24	#6	11'-0"	—
S1	15	#5	18'-7"	□
S2	12	#4	5'-5"	□
S3	24	#5	12'-7"	□
V1	20	#6	12'-6"	□
V2	20	#7	18'-5"	□
V3	20	#6	5'-6"	□
V4	24	#7	7'-10"	□
V5	24	#6	7'-10"	□
V6	12	#6	7'-3"	□
V7	12	#6	5'-3"	□
V8	12	#5	7'-0"	□
V9	12	#5	5'-0"	□
V10	10	#4	6'-3"	□
Concrete Structures	Cu. Yd.		34.0	
Reinforcement Bars	Pound		4840	

- NOTES:
- All concrete shall be $f'c = 4000$ psi
 - All reinforcement shall be ASTM A-615, Grade 60.
 - Minimum Bar Laps Are As Follows:
#5 = 2'-0"
#6 = 2'-6"
#7 = 2'-9"
 - Bend H2 Bars in Field As Required

CHARLESTON ENGINEERING, INC.
CONSULTING ENGINEERS
105 NORTH KITCHELL
P.O. BOX 397
OLNEY, ILLINOIS 62450
(618) 392-0736
ILLINOIS DEPARTMENT OF PROFESSIONAL REGULATION REGISTRATION #134.003513

ABUTMENT AND WINGWALL SECTIONS AND DETAILS

PEDESTRIAN BRIDGE OVER LITTLE WABASH RIVER

SEC. 10-00091-00-BT
EFFINGHAM COUNTY
STATION 35B+82.66