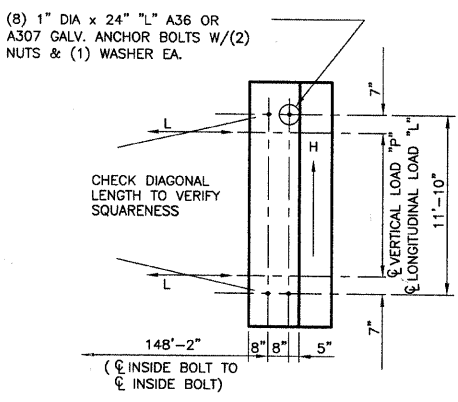


ANCHOR BOLT ELEVATION
NOT TO SCALE



ANCHOR BOLT PLAN
NOTE: ALL DIMENSIONS AND VALUES ARE SUBJECT TO CHANGE AFTER FINAL DESIGN
BRIDGE LIFTING WEIGHT: 85,000 LBS

DESIGN LOADINGS

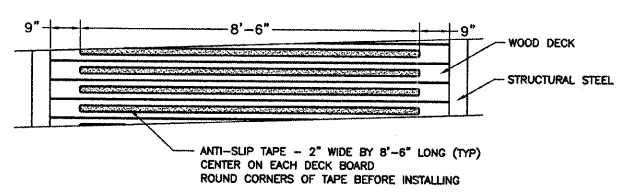
BRIDGE LENGTH = 150.00'
BRIDGE WIDTH = 10.00'
LIVE LOAD = 90 psf
VEHICLE LOAD = 10,000 lb
WIND LOAD = 35 psf

REACTIONS

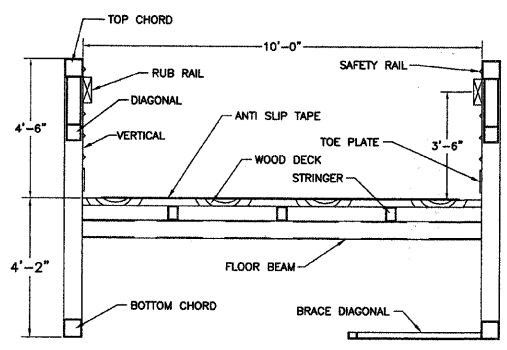
COMBINE REACTIONS AS PER LOCAL OR GOVERNING BUILDING CODES AS REQUIRED

BRIDGE REACTIONS		+ DOWNWARD LOAD		- UPWARD LOAD	
	P (LBS)	H (LBS)	L (LBS)		
DEAD LOAD	21,250				
UNIFORM LIVE LOAD	24,375				
VEHICLE LOAD	5,000				
WIND UPLIFT 20 PSF	-12,750				
WIND	± 12,460	23,625			
THERMAL					3,190

"P" - VERTICAL LOAD EACH BASE PLATE (4 PER BRIDGE)
"H" - HORIZONTAL LOAD EACH FOOTING (2 PER BRIDGE)
"L" - LONGITUDINAL LOAD EACH BASE PLATE (4 PER BRIDGE)



ANTI SLIP TAPE DETAIL

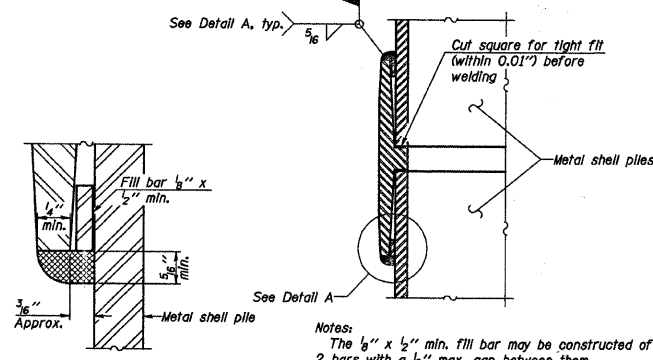


BRIDGE CROSS-SECTION



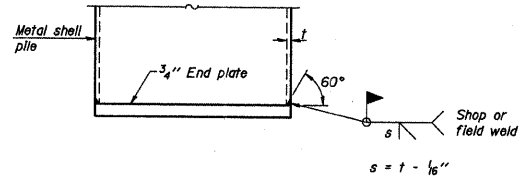
METAL SHELL PILE TABLE

Designation and outside diameter	Wall thickness t	Weight per foot (Lbs./ft.)	Inside volume (yd ³ /ft.)
PP12	0.179"	22.60	0.0274
PP12	0.250"	31.37	0.0267
PP14	0.250"	36.71	0.0368
PP14	0.312"	45.61	0.0361

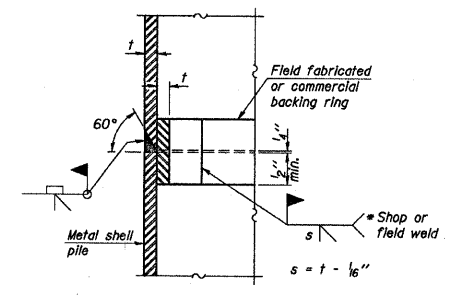


DETAIL A

WELDED COMMERCIAL SPLICE

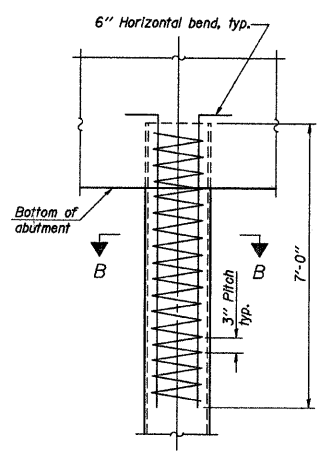


END PLATE ATTACHMENT



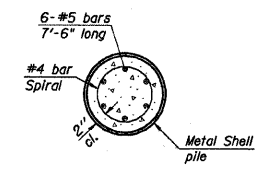
COMPLETE PENETRATION WELD SPLICE

* Field fabricated backing ring may be made from pile shell by removing segment to allow reducing circumference and vertically rejoin with partial joint penetration weld.



ELEVATION

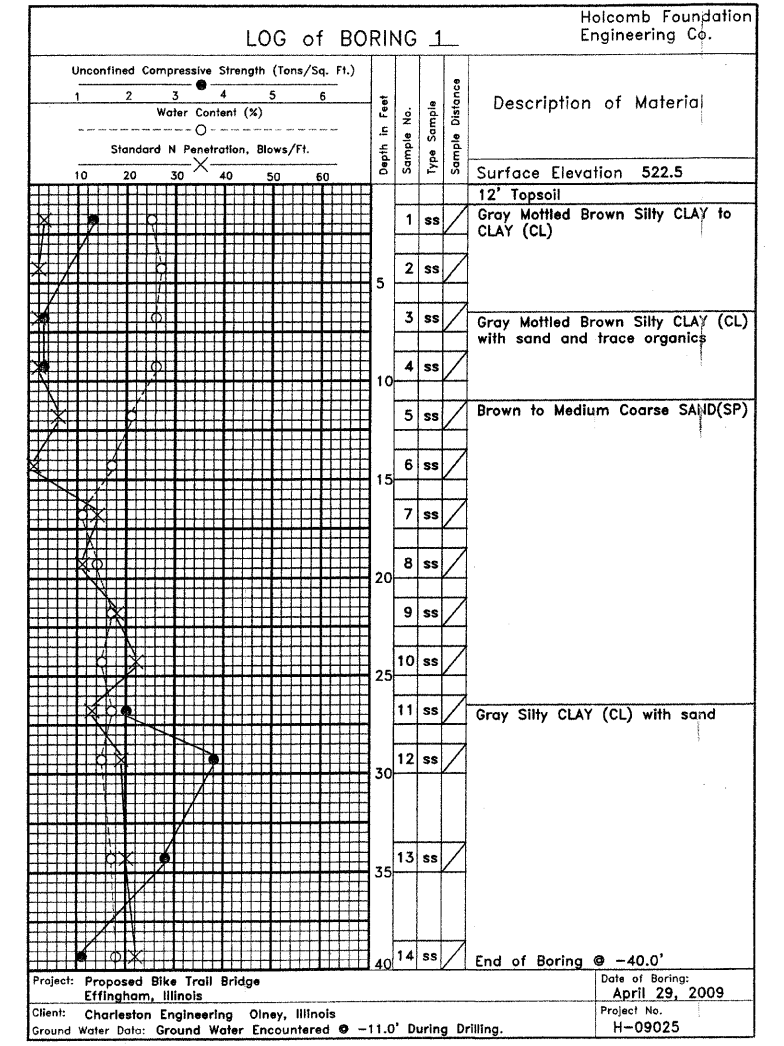
METAL SHELL REINFORCEMENT AT ABUTMENTS



SECTION B-B

METAL SHELL PILE DETAILS

Note:
The metal shell piles shall be according to ASTM A 252 Grade 3.



CHARLESTON ENGINEERING, INC.
CONSULTING ENGINEERS
105 NORTH KITCHELL
P.O. BOX 387
OLNEY, ILLINOIS 62450
(618) 352-0736
ILLINOIS DEPARTMENT OF PROFESSIONAL REGULATION REGISTRATION #184.00513

BRIDGE DETAILS
PEDESTRIAN BRIDGE OVER LITTLE WABASH RIVER

SEC. 10-00091-00-BT
EFFINGHAM COUNTY
STATION 35B+82.66