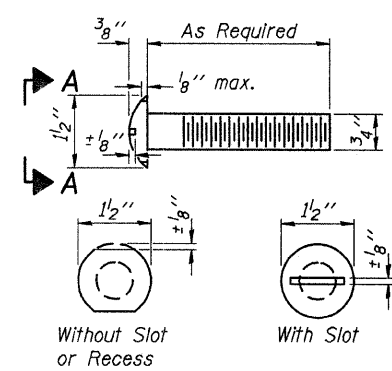
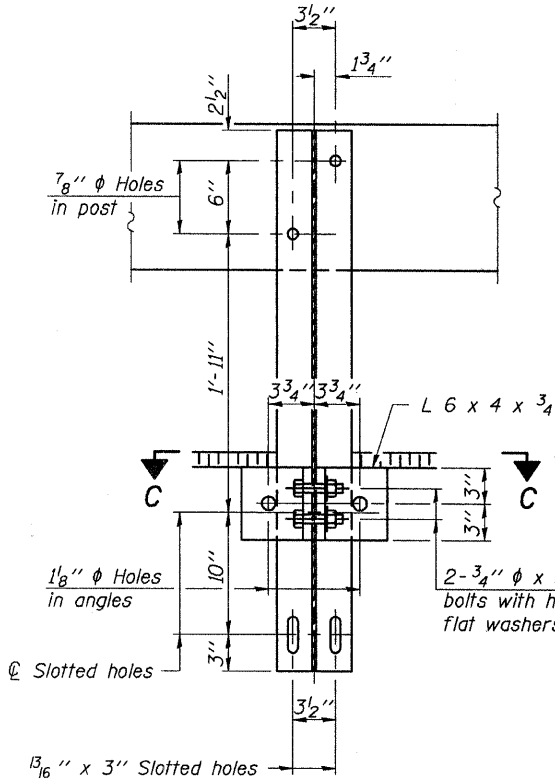
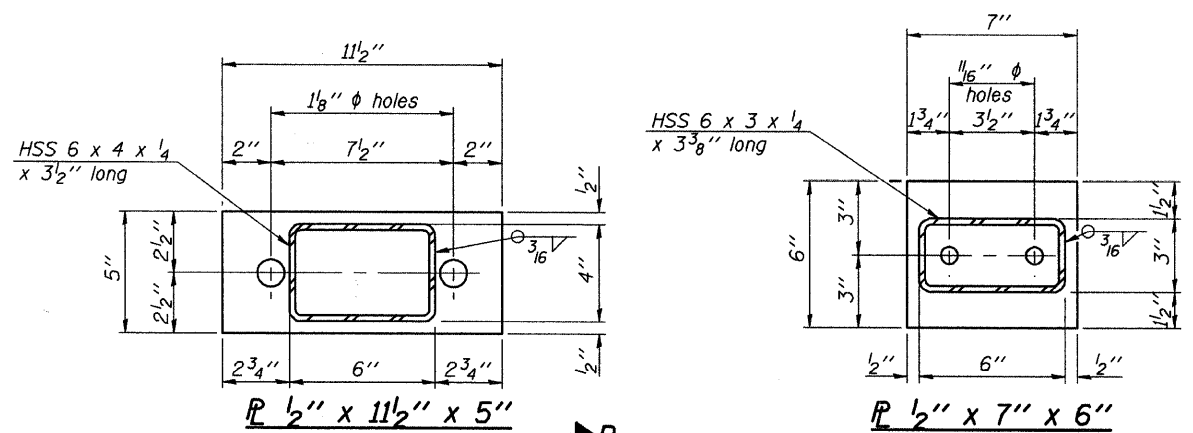


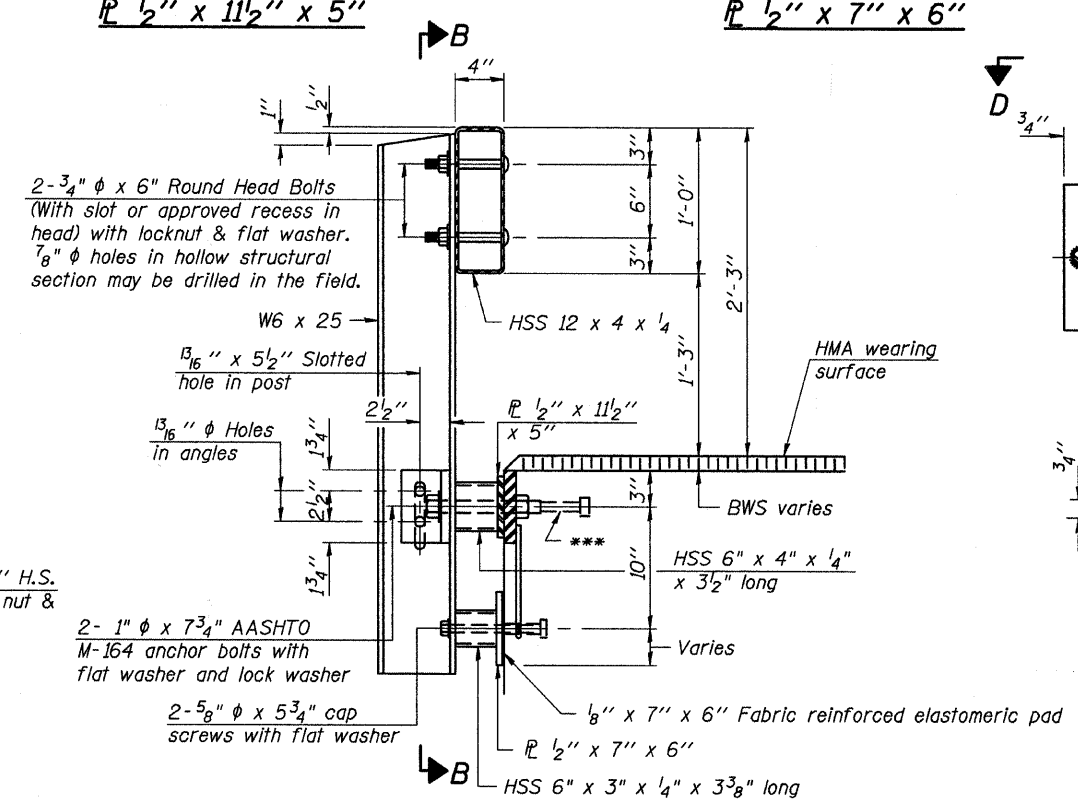
ROUTE	SECTION	COUNTY	TOTAL SHEETS	SHEET NO.
T.R. 237	10-05124-00-BR	LAWRENCE	13	7
CONTRACT NO. 95642		ILLINOIS		



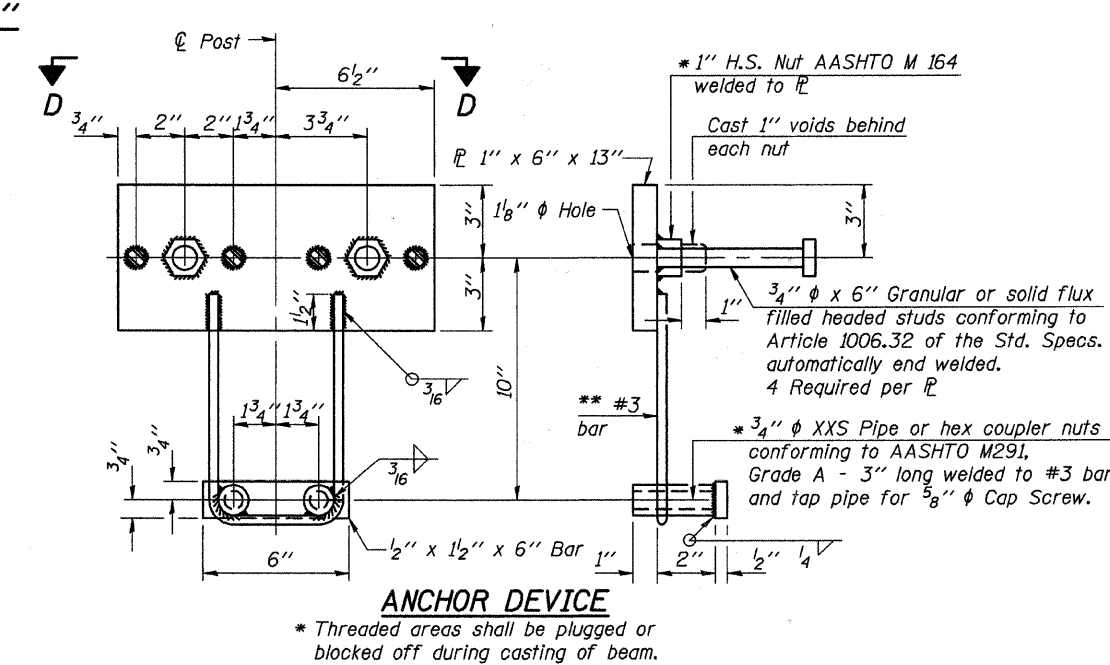
**VIEW A-A
ROUND HEAD BOLT**



SECTION B-B

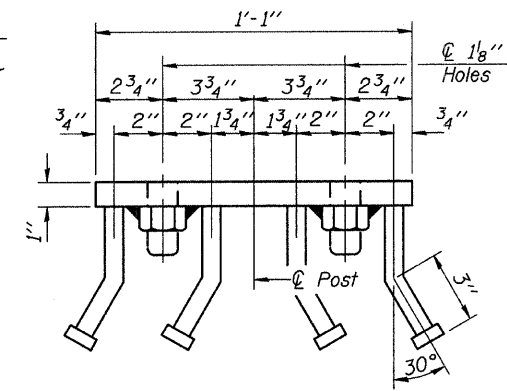


SECTION AT RAILING POST

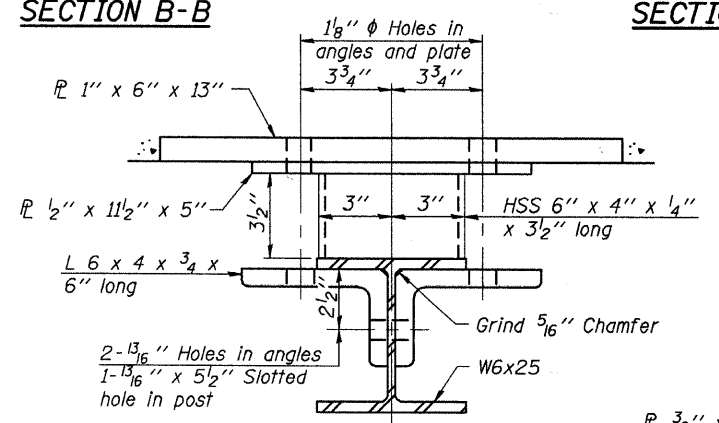


ANCHOR DEVICE

Notes:
 All field drilled holes shall be coated with an approved zinc rich paint before erection. For multi-span bridges, sufficient 1/4 inch x 6 inch x 1-2 inch galvanized steel shims shall be provided to align rail between adjacent spans. Cast included with Steel Railing, Type S-1.
 All steel rail elements shall be galvanized according to Article 509.05 of the Standard Specifications.
 *** The studs of the anchor devices shall be placed below the top reinforcement bars and the outermost longitudinal reinforcement bar shall be placed directly above the studs of the rail post anchor device.

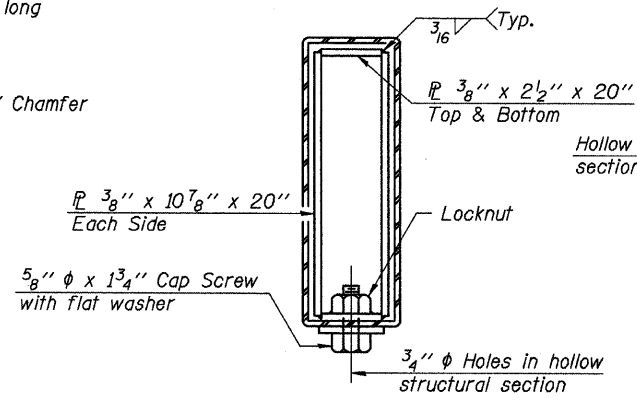


VIEW D-D

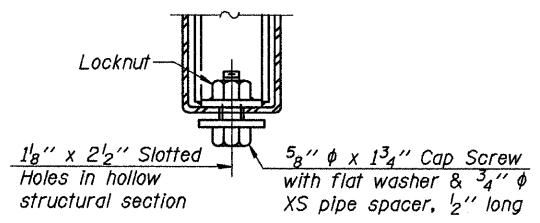


SECTION C-C

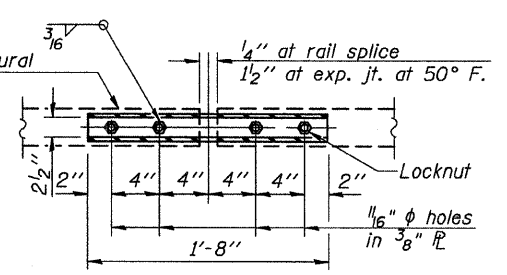
** Whenever the lower insert assemblies interfere with strand locations, the #3 bars shall be cut and adjusted in order to allow raising or lowering of the lower inserts. Maximum adjustment not to exceed 1/2 inch.



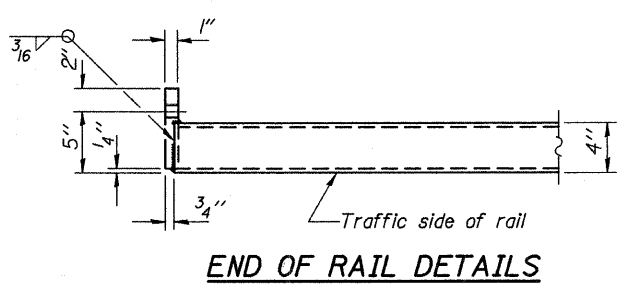
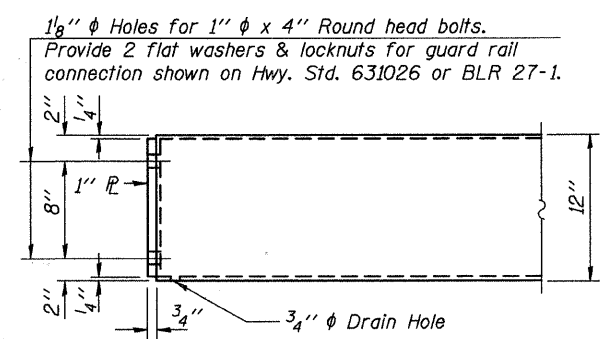
SECTIONS AT RAIL SPLICE



**RAIL SPLICE CONNECTION
AT EXPANSION JT.**



**PLAN-BOTT. SPLICE R
TYPICAL**



END OF RAIL DETAILS

BILL OF MATERIAL

Item	Unit	Quantity
Steel Railing, Type S-1	Foot	102

STEEL RAILING, TYPE S-1

CHARLESTON ENGINEERING, INC.
 CONSULTING ENGINEERS
 105 NORTH KITCHELL
 P.O. BOX 397
 OLNEY, ILLINOIS 62450
 (618) 392-0736
 ILLINOIS DEPARTMENT OF PROFESSIONAL REGULATION REGISTRATION #184.003513

STEEL RAILING, TYPE S-1
 STRUCTURE NO. 051-3299
 T.R. 237
 OVER BIG SLOUGH
 SECTION 10-05124-00-BR
 LAWRENCE COUNTY
 STATION 4+53.00