

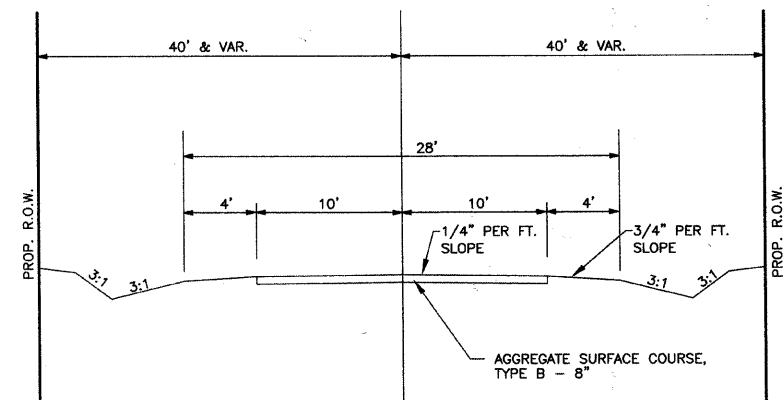
|                    |                |          |              |           |
|--------------------|----------------|----------|--------------|-----------|
| ROUTE              | SECTION        | COUNTY   | TOTAL SHEETS | SHEET NO. |
| TR 237             | 10-05124-00-BR | LAWRENCE | 13           | 2         |
| CONTRACT NO. 95642 |                | ILLINOIS |              |           |

**DESIGN DATA**

LOCAL ROAD  
ADT = 125

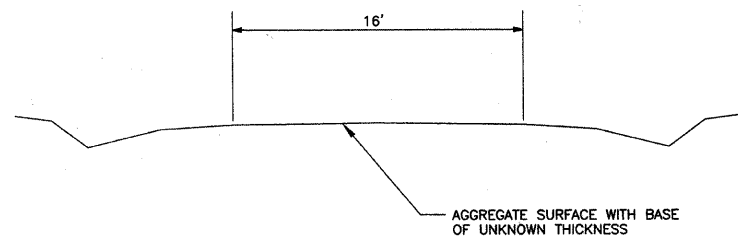
**GENERAL NOTES**

- SEEDING: THIS WORK SHALL BE PERFORMED IN ACCORDANCE WITH THE APPLICABLE PORTIONS OF SECTION 250 OF THE STANDARD SPECIFICATIONS AND SHALL BE PAID FOR AT THE CONTRACT UNIT PRICE FOR SEEDING CLASS 2 (SPECIAL).
  - SPRING SEEDING SHALL EXTEND FROM JANUARY 1 TO JUNE 30
  - FALL SEEDING SHALL EXTEND FROM JULY 1 TO DECEMBER 31
  - FERTILIZER NUTRIENTS SHALL BE APPLIED AT THE RATE OF 100 LB/ACRE
  - MULCHING SHALL BE DONE IN ACCORDANCE WITH ARTICLE 251 OF THE STANDARD SPECIFICATIONS AND SHALL BE DONE BY METHOD 2, PROCEDURE 1 AT THE RATE OF 2 TONS PER ACRE.
- NO PAYMENT FOR OVERHAUL WILL BE MADE ON THIS SECTION.



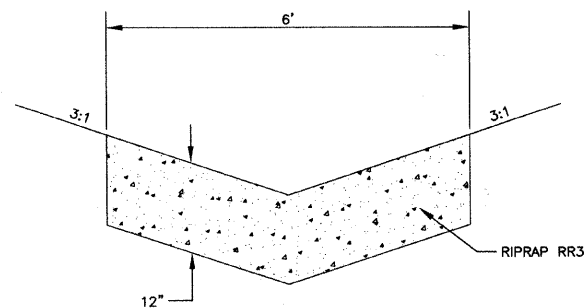
**TYPICAL SECTION**

PROPOSED



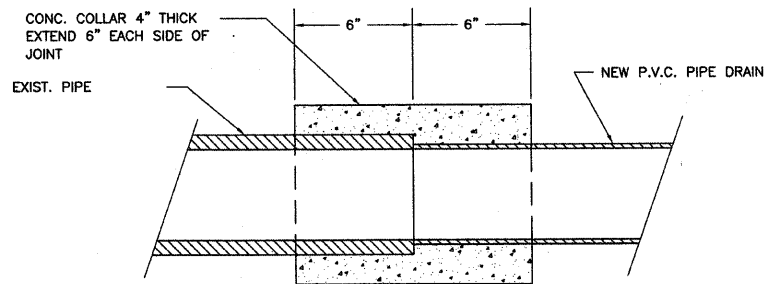
**TYPICAL SECTION**

EXISTING

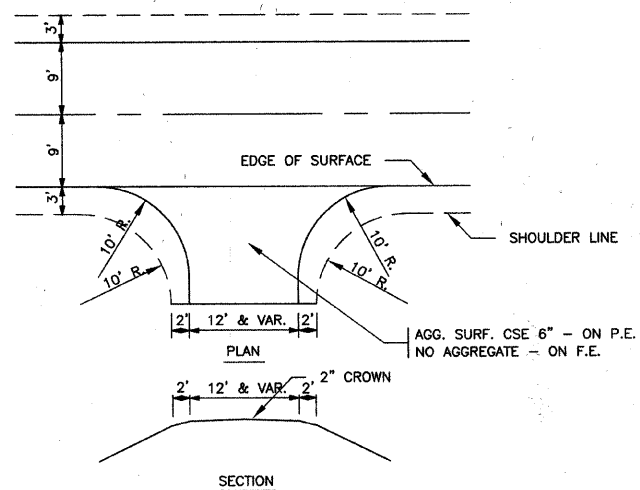


**AGGREGATE DITCH DETAIL**

LT. STA. 2+30 TO 4+27  
RT. STA. 2+50 TO 4+27  
(FILTER FABRIC WILL NOT BE REQ.)



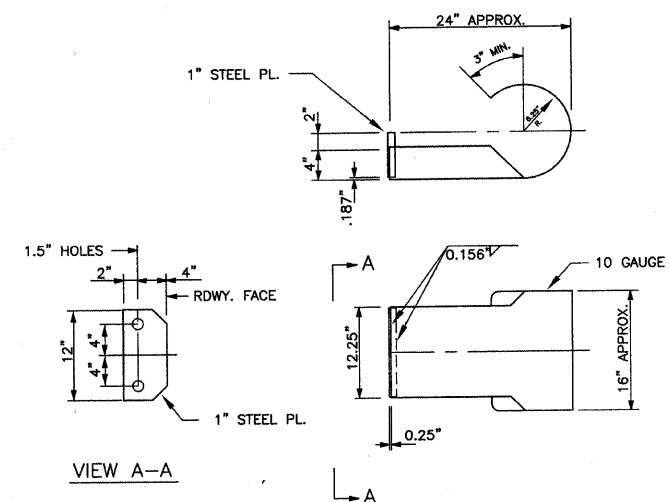
**CONCRETE COLLAR DETAIL**



**ENTRANCE DETAIL**

| SUMMARY OF QUANTITIES |   |       |          |
|-----------------------|---|-------|----------|
| CODE NO.              | ITEM  | UNIT  | QUANTITY |
| 20200100              | EARTH EXCAVATION                                    | CU YD | 215      |
| 20300100              | CHANNEL EXCAVATION                                  | CU YD | 150      |
| 20400800              | FURNISHED EXCAVATION                                | CU YD | 460      |
| X2501000              | SEEDING, CLASS 2 (SPECIAL)                          | ACRE  | 0.50     |
| 28000305              | TEMPORARY DITCH CHECKS                              | FOOT  | 24       |
| 28100807              | STONE DUMPED RIPRAP, CLASS A4                       | TON   | 200      |
| 28300400              | AGGREGATE DITCH                                     | TON   | 125      |
| 35101400              | AGGREGATE BASE COURSE, TYPE B                       | TON   | 60       |
| 40200800              | AGGREGATE SURFACE COURSE, TYPE B                    | TON   | 410      |
| 50100100              | REMOVAL OF EXISTING STRUCTURES                      | EACH  | 1        |
| 50300225              | CONCRETE STRUCTURES                                 | CU YD | 24.4     |
| 50300280              | CONCRETE ENCASEMENT                                 | CU YD | 3.5      |
| 50400405              | PRECAST PRESTRESSED CONCRETE DECK BEAMS (21" DEPTH) | SQ FT | 1400     |
| 50800205              | REINFORCEMENT BARS, EPOXY COATED                    | POUND | 3000     |
| * 50900205            | STEEL RAILING, TYPE S1                              | FOOT  | 102      |
| 51201400              | FURNISHING STEEL PILES HP 10X42                     | FOOT  | 315      |
| 51202305              | DRIVING PILES                                       | FOOT  | 315      |
| 51203400              | TEST PILE STEEL HP 10 X 42                          | EACH  | 1        |
| 51500100              | NAME PLATES   | EACH  | 1        |
| 54248510              | CONCRETE COLLAR                                     | CU YD | 0.25     |
| 60100985              | PIPE DRAINS 24"                                     | FOOT  | 185      |
| 67100100              | MOBILIZATION  | L SUM | 1        |

\* SPECIALTY ITEMS



**CURL END SECTION DETAILS**

4 REQUIRED - COST INCLUDED IN  
\*STEEL RAILING, TYPE S-1\*