

ROUTE	SECTION	COUNTY	TOTAL SHEETS	SHEET NO.
T.R. 237	10-05124-00-BR	LAWRENCE	13	1
CONTRACT NO. 95642		ILLINOIS	PROJECT NO.	

STATE OF ILLINOIS
DEPARTMENT OF TRANSPORTATION
DIVISION OF HIGHWAYS
PLANS FOR PROPOSED
HIGHWAY BRIDGE PROGRAM PROJECT
SECTION 10-05124-00-BR LAWRENCE COUNTY
PROJECT BROS-0101(037)
JOB NO. C-97-024-11
DENISON ROAD DISTRICT
T.R. 237

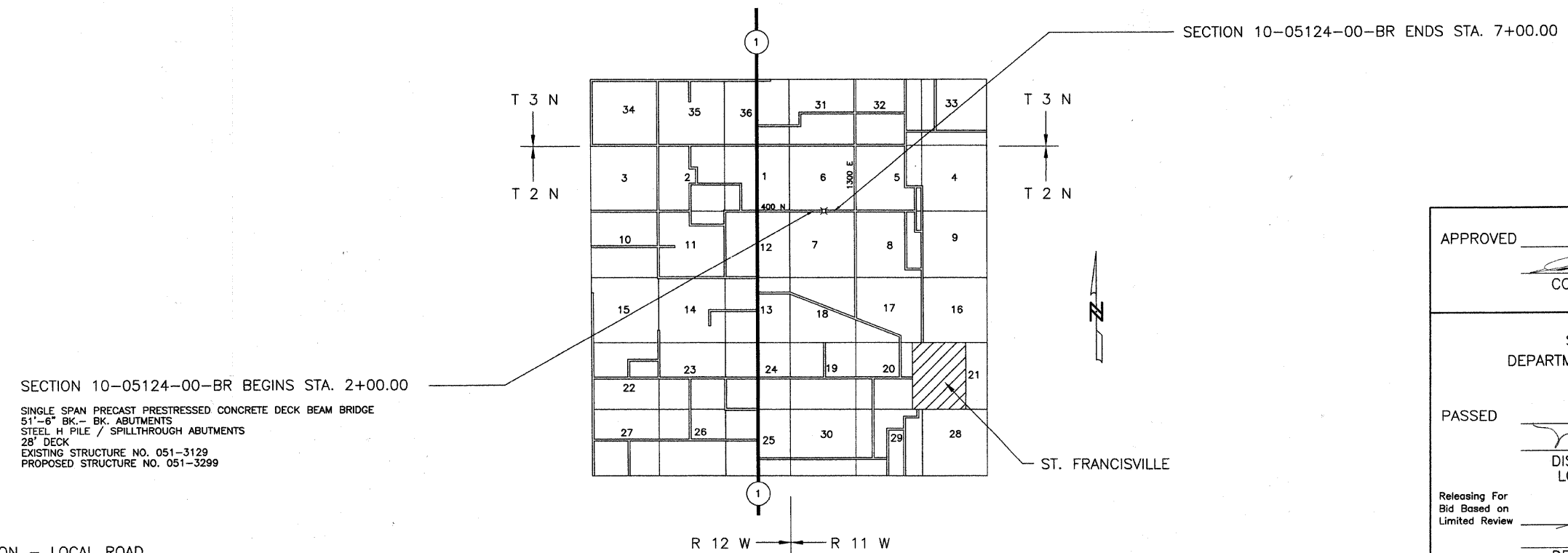
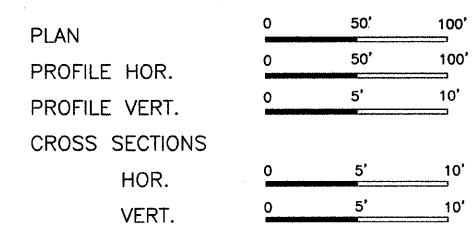
CONTRACT NO. 95642

JULIE 1-800-892-0123

INDEX OF SHEETS

SHEET	ITEM
1	COVER SHEET
2	SUMMARY OF QUANTITIES
3	ROADWAY PLAN AND PROFILE
4	GENERAL PLAN AND ELEVATION
5-6	SUPERSTRUCTURE
7	STEEL RAILING TYPE S-1
8	WEST ABUTMENT DETAILS
9	EAST ABUTMENT DETAILS
10	PILE DETAILS
11	BORING LOGS
12-13	CROSS SECTIONS

- STANDARD DRAWINGS
- STANDARD 000001-06
 - STANDARD 280001-05
 - STANDARD 515001-03
 - STANDARD 701901-01
 - STANDARD BLR 21-8
 - STANDARD BLR 22-6



SINGLE SPAN PRECAST PRESTRESSED CONCRETE DECK BEAM BRIDGE
 51'-6" BK.- BK. ABUTMENTS
 STEEL H PILE / SPILLTHROUGH ABUTMENTS
 28' DECK
 EXISTING STRUCTURE NO. 051-3129
 PROPOSED STRUCTURE NO. 051-3299

Roger A. Charbel
 27110 Reg. Eng. # 29195
 11/2/10
 27110
 REGISTERED
 PROFESSIONAL
 ENGINEER
 OF
 ILLINOIS

CHARLESTON ENGINEERING INC.
 105 N. KITCHELL
 P.O. BOX 397
 OLNEY, ILLINOIS 62450
 PH. 618-392-0736

APPROVED 1-4 2011
 COUNTY ENGINEER

PASSED 1-5 2011
 DISTRICT SEVEN ENGINEER OF
 LOCAL ROADS AND STREETS

Releasing For
 Bid Based on
 Limited Review 1-5 2011
 DEPUTY DIRECTOR OF HIGHWAYS
 REGION FOUR ENGINEER

FUNCTIONAL CLASSIFICATION - LOCAL ROAD
 ADT = 125
 DESIGN SPEED = 30 MPH

NET LENGTH SECTION 10-05124-00-BR = 500.00 Ft. = 0.095 Mi.