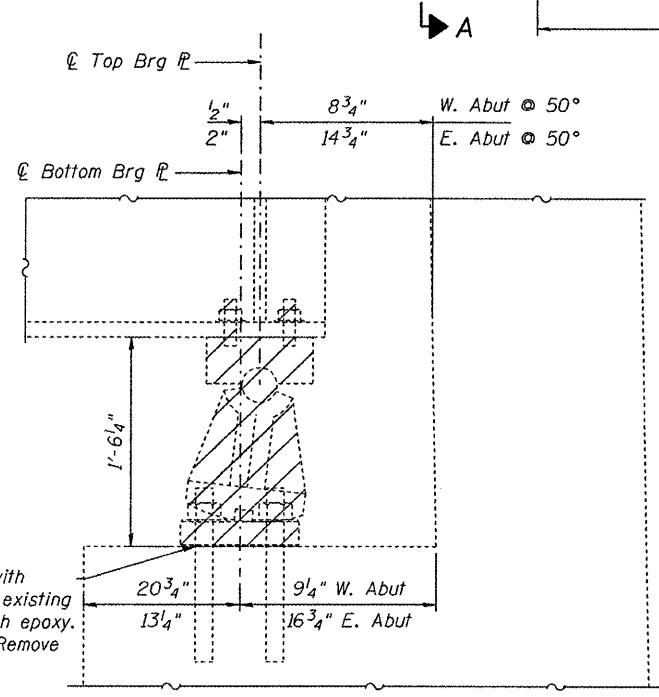


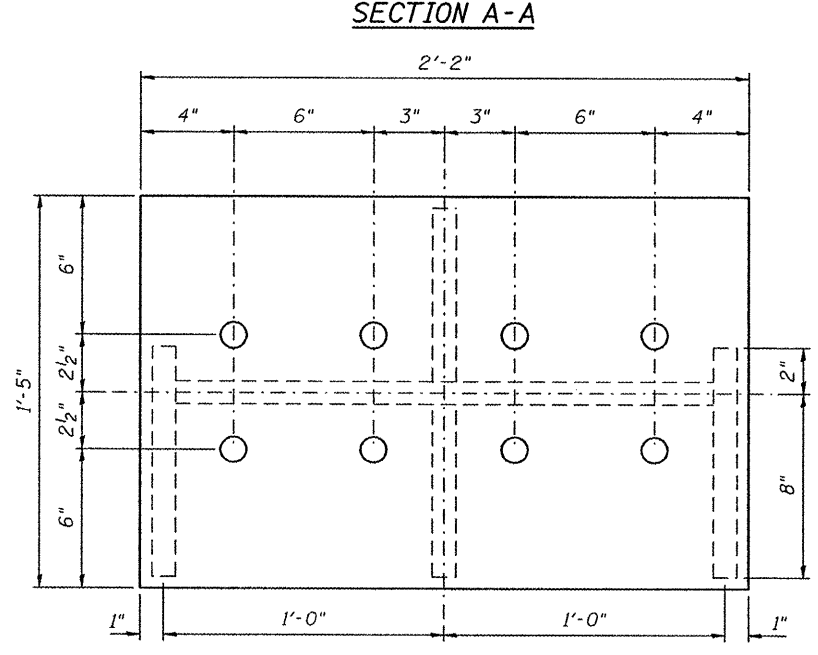
**BEAM REACTIONS**

R <sub>l</sub>	(K)	222
R <sub>l</sub> w.s.	(K)	17
R <sub>t</sub>	(K)	111
R (Total)	(K)	350



Cut existing anchor bolts flush with existing concrete surface. Grind existing anchor bolts smooth and seal with epoxy. Cost is included with "Jack and Remove Existing Bearings".

**JACK AND REMOVE EXISTING BEARINGS**



**PLAN TOP & BOTTOM PL**

**Notes:**  
 Cross-frame removal and reinstallation may be required to facilitate drilling holes. Cost included with Furnishing and Erecting Structural Steel.  
 New steel extensions, shim plates, girder repair plates, and connection bolts are included with Furnishing and Erecting Structural Steel.  
 All plates shall be AASHTO M270, Gr. 50.  
 Prior to ordering any material, the Contractor shall verify in the field all bearing height and shim thickness dimensions. Minimum jack capacity = 350 Tons.  
 Anchor bolts shall be ASTM F1554 all-thread (or an Engineer-approved alternate material) of the grade(s) and diameter(s) specified. ASTM A307 Grade C anchor bolts may be used in lieu of ASTM F1554 Grade 36 (F<sub>y</sub>=36ksi). The corresponding specified grade of AASHTO M314 anchor bolts may be used in lieu of ASTM F1554.  
 Drilled and set anchor bolts shall be installed according to Article 521.06 of the Standard Specifications.  
 All bolts for the web plate repair shall be 1/2" φ, 15/16" φ holes, except for the 4 bolts extending through the bottom flange and steel pedestal.  
 The existing webs are rusted completely through near the bottom flanges. The web repair plates shall be installed prior to jacking. Additional temporary jacking web stiffeners may be required. See special provisions.

DESIGNED - J. Uehle  
 CHECKED - A. Holloway  
 DRAWN - J. Uehle  
 CHECKED - A. Holloway

EXAMINED *John F. [Signature]*  
 ENGINEER OF STRUCTURAL SERVICES  
 DATE - March 11, 2011  
 PASSED \_\_\_\_\_  
 ENGINEER OF BRIDGES AND STRUCTURES

**STATE OF ILLINOIS**  
**DEPARTMENT OF TRANSPORTATION**

**STEEL DETAILS**  
**SN 082-0198**  
 SHEET NO. 8 OF 11 SHEETS

F.A.P. RTE.	SECTION	COUNTY	TOTAL SHEETS	SHEET NO.
103	561-B-1	ST. CLAIR	21	15
CONTRACT NO. 76E20				
ILLINOIS FED. AID PROJECT				