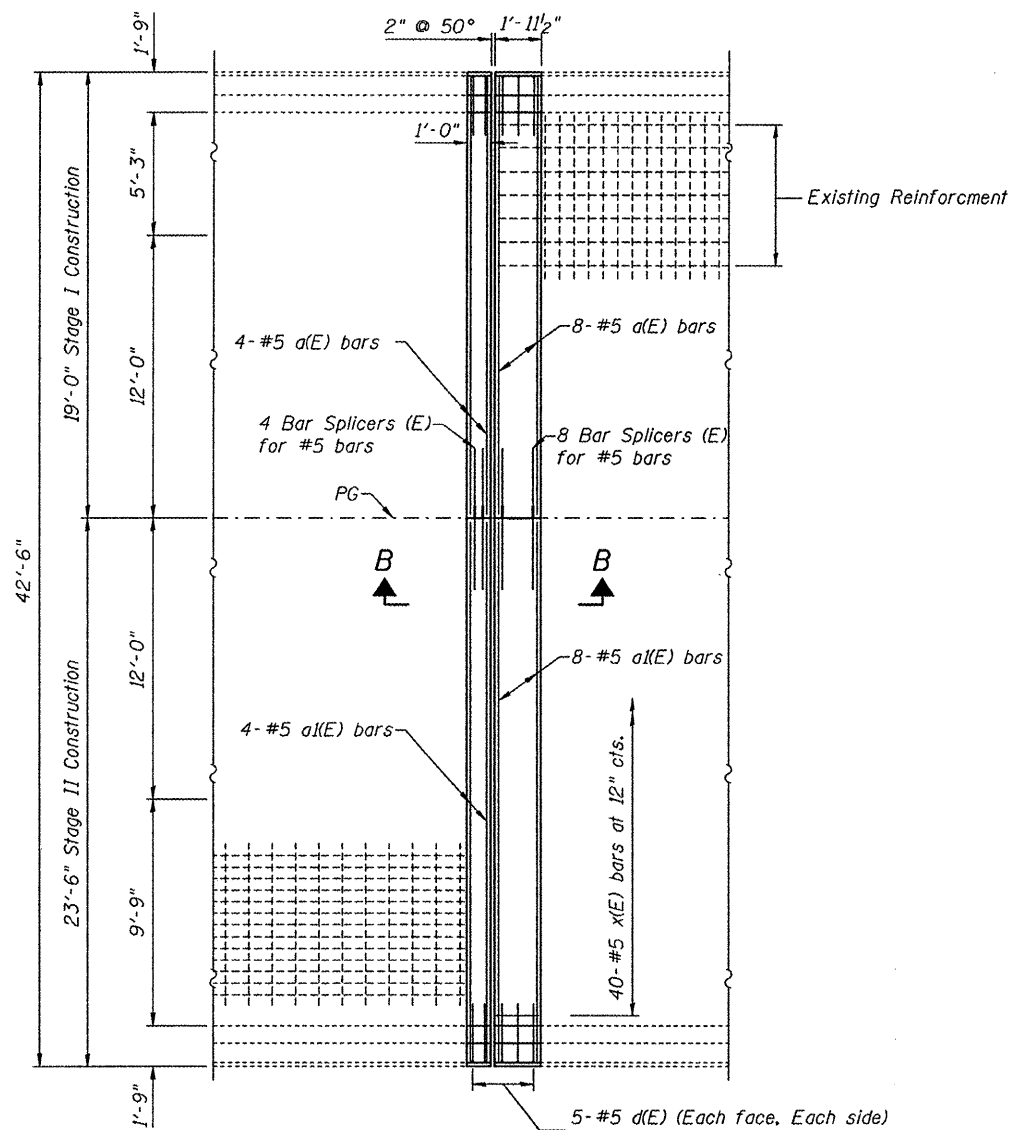
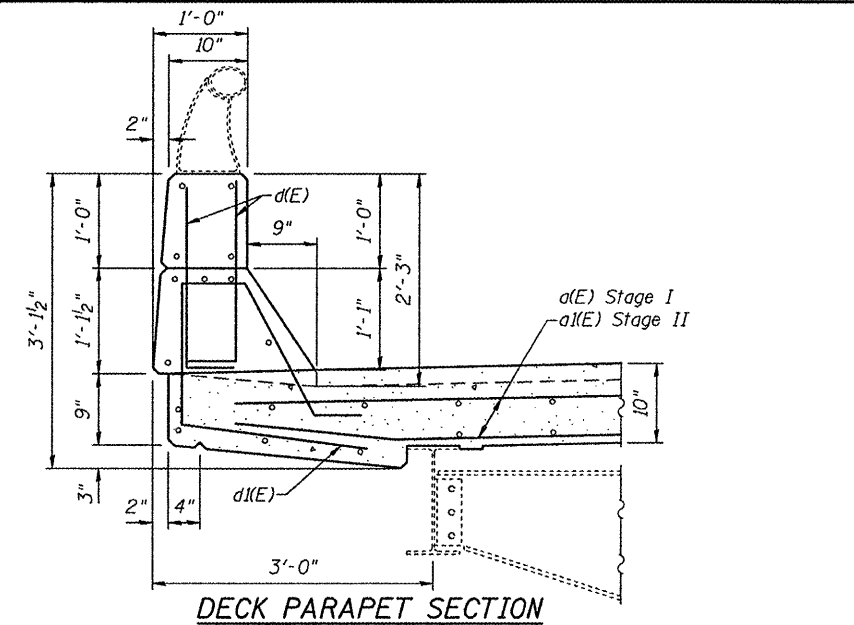


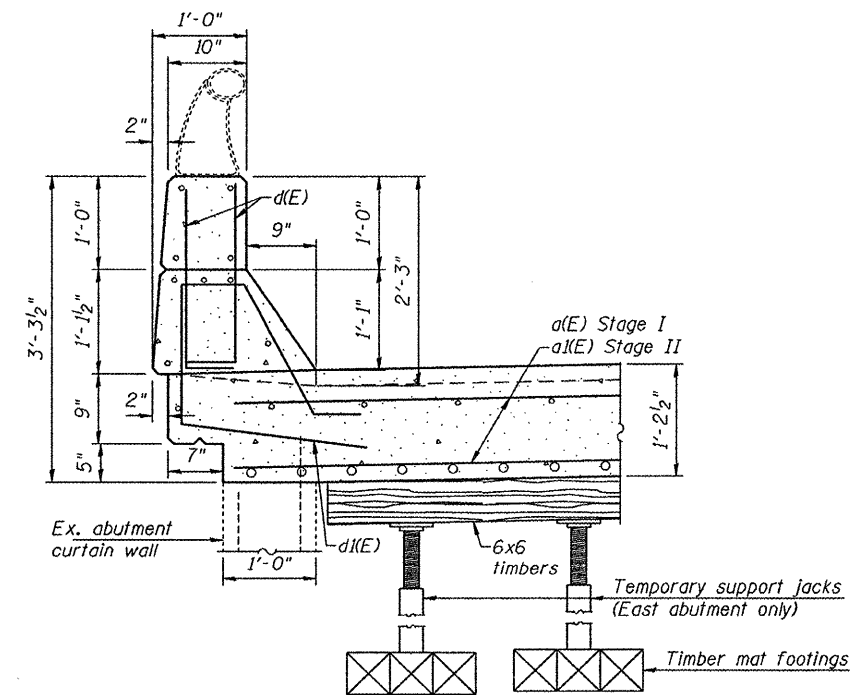
CONCRETE REMOVAL



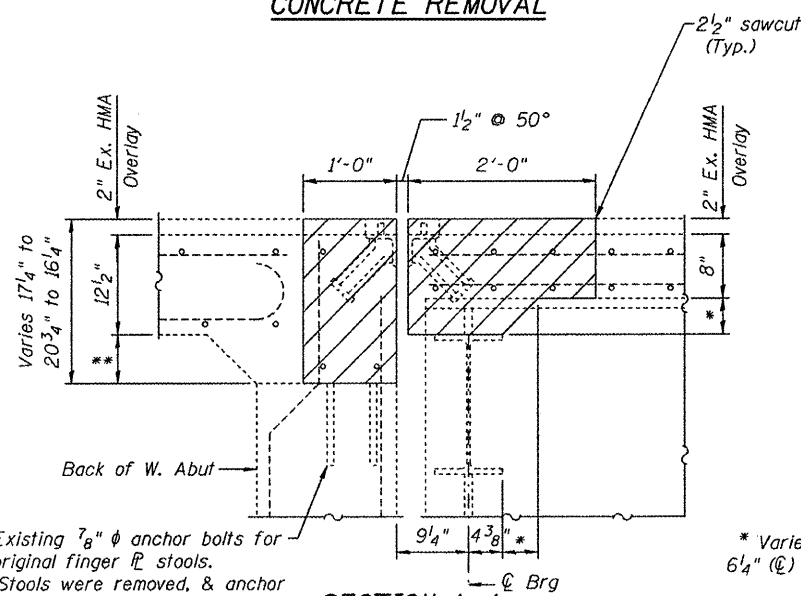
CONCRETE REPLACEMENT



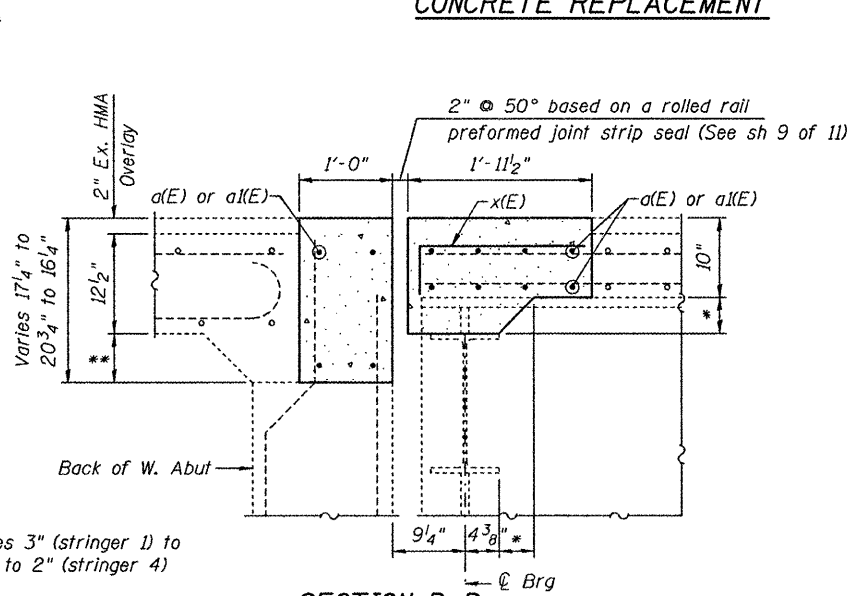
DECK PARAPET SECTION



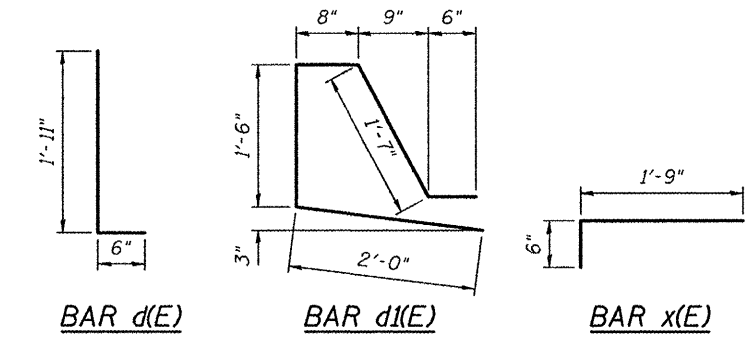
VAULTED ABUTMENT SLAB PARAPET SECTION
(showing Temporary Slab Support System)



SECTION A-A



SECTION B-B



BAR d(E)

BAR d(E)

BAR x(E)

BILL OF MATERIAL

| Bar | No. | Size | Length | Shape |
|----------------------------------|----------|------|--------|-------|
| a(E) | 12 | #5 | 18'-0" | — |
| a(E) | 12 | #5 | 22'-6" | — |
| d(E) | 20 | #5 | 2'-5" | ┌ |
| d(E) | 10 | #5 | 6'-3" | └ |
| x(E) | 40 | #5 | 2'-3" | ┌ |
| Bar Splicers | Each | | 12 | |
| Reinforcement Bars, Epoxy Coated | Pound | | 720 | |
| Concrete Superstructure | Cu. Yds. | | 6.2 | |
| Concrete Removal | Cu. Yds. | | 6.1 | |

Bars indicated thus 4x2 - #5 etc. indicates 4 line of bars with 2 lengths per line.

| | | |
|-----------------------|------------------------------------|-----------------------|
| DESIGNED - J. Uehle | EXAMINED - <i>[Signature]</i> | DATE - March 11, 2011 |
| CHECKED - A. Holloway | ENGINEER OF STRUCTURAL SERVICES | |
| DRAWN - J. Uehle | PASSED - <i>[Signature]</i> | |
| CHECKED - A. Holloway | ENGINEER OF BRIDGES AND STRUCTURES | |

STATE OF ILLINOIS
DEPARTMENT OF TRANSPORTATION

WEST ABUTMENT CONCRETE REPLACEMENT
SN 082-0198

SHEET NO. 2 OF 11 SHEETS

| F.A.P. RTE. | SECTION | COUNTY | TOTAL SHEETS | SHEET NO. |
|--------------------|---------|-----------|---------------------------|-----------|
| 103 | 561-B-1 | ST. CLAIR | 21 | 9 |
| CONTRACT NO. 76E20 | | | ILLINOIS FED. AID PROJECT | |