

SN 082-0198 was originally built in 1969 as SBI Route 13, Section 561-B. It consists of a 3 span continuous two girder structure on vaulted abutments and pile supported piers. In 1988 the structure was overlayed with 1 1/2" HMA. The joints and bearings shall be replaced at both abutments. The main girder ends shall also be repaired. Traffic shall be maintained with staged construction.

Salvage: None

**SHEET INDEX**

1. General Plan & Elevation: General Notes
2. West Abutment Concrete Replacement
3. East Abutment Concrete Replacement
4. Finger Plate Plan & Abutment Elevation
5. Finger Plate Elevation
6. Finger Plate Details
7. Pot Bearings
8. Steel Details
9. Strip Seal
10. Temporary Concrete Barrier
11. Bar splicers

**GENERAL NOTES**

Fasteners shall be high strength bolts. Bolts 3/4"φ, holes 7/8"φ, unless otherwise noted.

The calculated weight of Structural Steel = 1,650 (Steel Extensions), 1,280 (Girder Repair Plates), and 15,870 (Finger Plate). All plates are AASHTO M270, Gr. 50.

No field welding is permitted except as specified in the contract documents.

Reinforcement bars shall conform to the requirements of ASTM A 706 Gr 60. See Special Provisions.

Reinforcement bars designated (E) shall be epoxy coated.

Prior to pouring the new concrete deck, all heavy or loose rust, loose mill scale, and other loose or potentially detrimental foreign material shall be removed from the surfaces in contact with concrete. Tightly adhered paint may remain unless otherwise noted. Removal shall be accomplished by methods that will not damage the steel and the cost will be included in the pay item covering removal of the existing concrete.

As directed by the Engineer, existing construction accessories welded to the top flange of beams and girders shall be removed. The weld areas shall be ground flush and inspected for cracks using magnetic particle testing (MT) or dye penetrant testing (PT) by qualified personnel approved by the Engineer.

Any cracks that cannot be removed by grinding 1/4 inch deep shall be identified and reported to the Bureau of Bridges and Structures for further disposition. The cost of removing welded accessories, grinding and inspecting weld areas and grinding cracks will be paid for according to Article 109.04 of the Standard Specifications.

Plan dimensions and details relative to existing plans are subject to nominal construction variations. The Contractor shall field verify existing dimensions and details affecting new construction and make necessary approved adjustments prior to construction or ordering of materials. Such variations shall not be cause for additional compensation for a change in scope of the work, however, the Contractor will be paid for the quantity actually furnished at the unit price bid for the work.

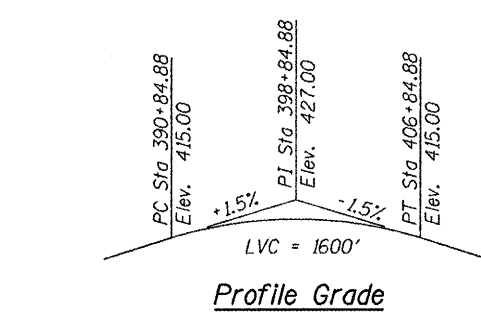
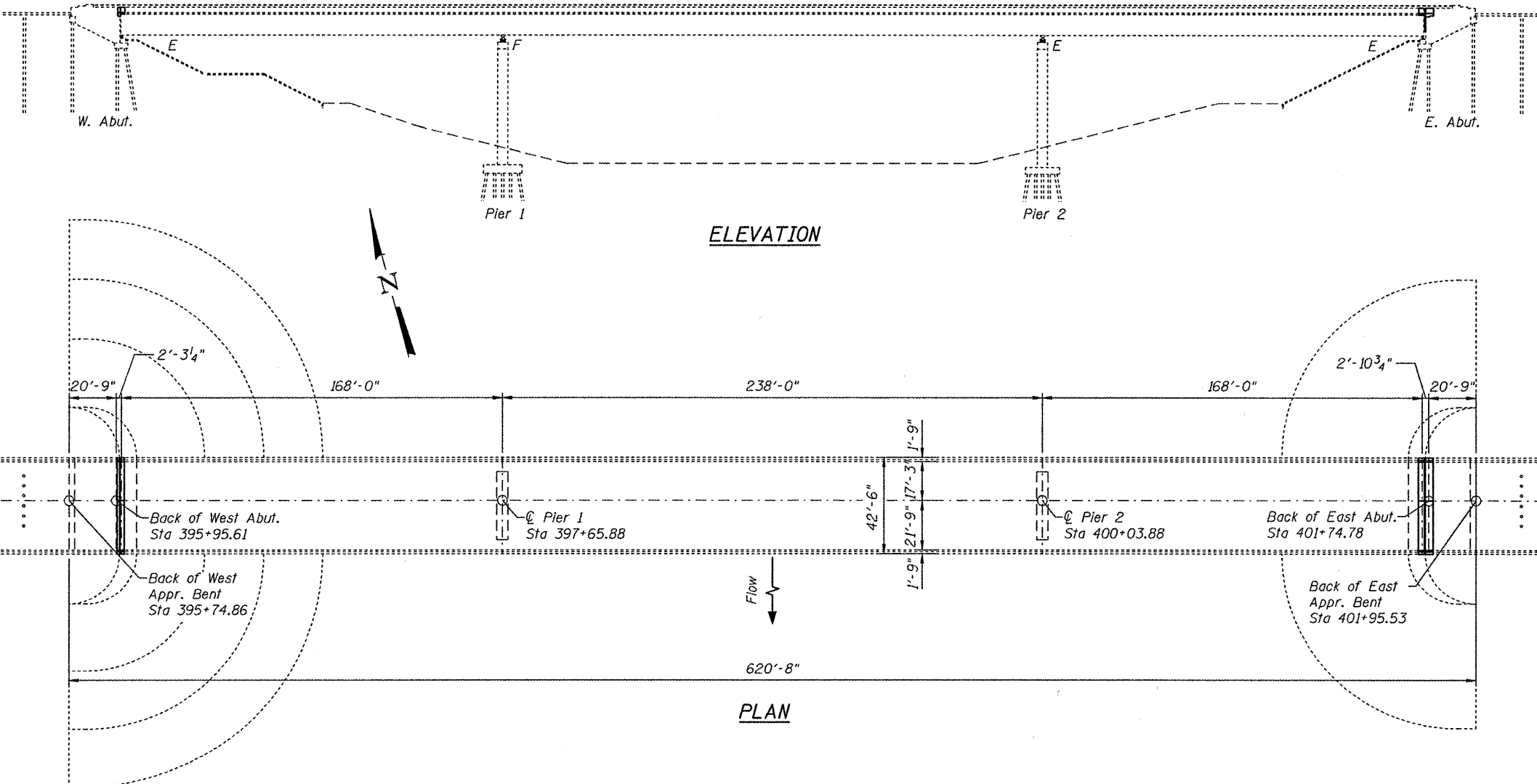
The existing structural steel coating contains lead. The Contractor shall take appropriate precautions to deal with the presence of lead on this project.

All plates, anchor bolts, bolts, nuts, washers and studs shall be galvanized according to AASHTO M111 or M232 as applicable. The cost shall be included with the appropriate pay item.

Existing reinforcement extending into removal area shall be cleaned, straightened, and incorporated into the new construction. Any reinforcement bars that are damaged during concrete removal shall be repaired or replaced using an approved bar splicer or anchorage system. Cost included with Concrete Removal.

Existing structural steel shall only be cleaned and painted as required by the Special Provision "Cleaning and Painting Contact Surfaces of Existing Steel Structures."

The cost of removal and re-installation of all members necessary to complete the work shall be included with "Finger Plate Expansion Joint, 5in."

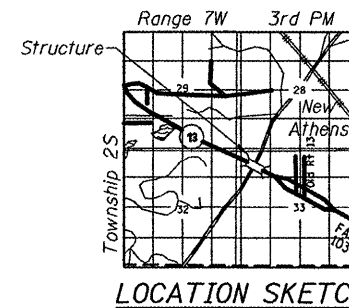
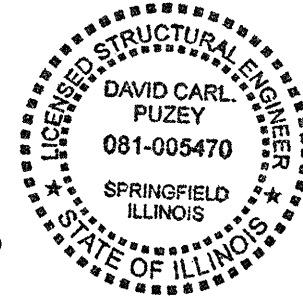


**DESIGN SPECIFICATIONS**  
2002 AASHTO Standard Specifications  
for Highway Bridges

**LOADING HS20-44**  
No future wearing surface.

**DESIGN STRESSES**

**FIELD UNITS**  
f'c = 3,500 psi  
fy = 60,000 psi (Reinforcement)  
fy = 50,000 psi (M270 Grade 50)



**TOTAL BILL OF MATERIAL**

ITEM	UNIT	QUANTITY
Concrete Removal	Cu. Yd.	19.0
Concrete Superstructure	Cu. Yd.	17.4
Furnishing and Erecting Structural Steel	Pound	2930
Reinforcement Bars, Epoxy Coated	Pound	1720
Bar Splicers	Each	26
Preformed Joint Strip Seal	Foot	44.5
Finger Plate Expansion Joint, 5"	Foot	39.0
Fabric Reinforced Elastomeric Trough	Foot	41.0
Anchor Bolts, 1"	Each	16
HLMR Bearings, Guided Expansion, 350K	Each	4
Mechanical Splicers	Each	40
Jack and Remove Existing Bearings	Each	4
Temporary Slab Support System	Each	1

DESIGNED - J. Uehle  
CHECKED - A. Holloway  
DRAWN - J. Uehle  
CHECKED - A. Holloway

EXAMINED - *J. F. [Signature]*  
PASSED - *[Signature]*  
DATE - March 11, 2011

STATE OF ILLINOIS  
DEPARTMENT OF TRANSPORTATION

GENERAL PLAN AND ELEVATION  
SN 082-0198  
SHEET NO. 1 OF 11 SHEETS

F.A.P. RTE.	SECTION	COUNTY	TOTAL SHEETS	SHEET NO.
103	561-B-1	ST. CLAIR	21	8
CONTRACT NO. 76E20				
ILLINOIS FED. AID PROJECT				