

STATE OF ILLINOIS
DEPARTMENT OF TRANSPORTATION
DIVISION OF HIGHWAYS

PROPOSED
HIGHWAY PLANS

F.A.I. ROUTE 74 (I-74)
SECTION FY2011 BRIDGE DECK SEALING
VARIOUS DISTRICT WIDE BRIDGE DECK SEALING
CHAMPAIGN, MCLEAN & VERMILION COUNTIES

C-95-033-10

FOR INDEX OF SHEETS, SEE SHEET NO. 4
FOR SUMMARY OF QUANTITIES, SEE SHEET NO. 5

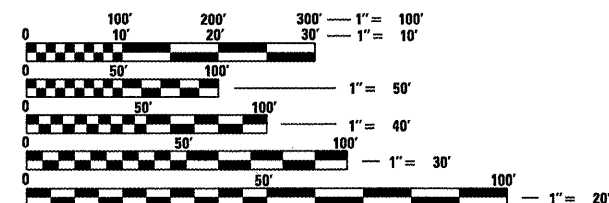
CURRENT ADT

F.A.I. 74
HIGHEST LOCATION SHOWN

2009 ADT = 54,300
2020 ADT = 65,000
PU + PC = 80%
SU = 5%
MU = 15%

DESIGN DESIGNATION

INTERSTATE



FULL SIZE PLANS HAVE BEEN PREPARED USING STANDARD
ENGINEERING SCALES. REDUCED SIZED PLANS WILL NOT
CONFORM TO STANDARD SCALES. IN MAKING MEASUREMENTS
ON REDUCED PLANS, THE ABOVE SCALES MAY BE USED.

J.U.L.I.E.
JOINT UTILITY LOCATION INFORMATION FOR EXCAVATION
1-800-892-0123
OR 811

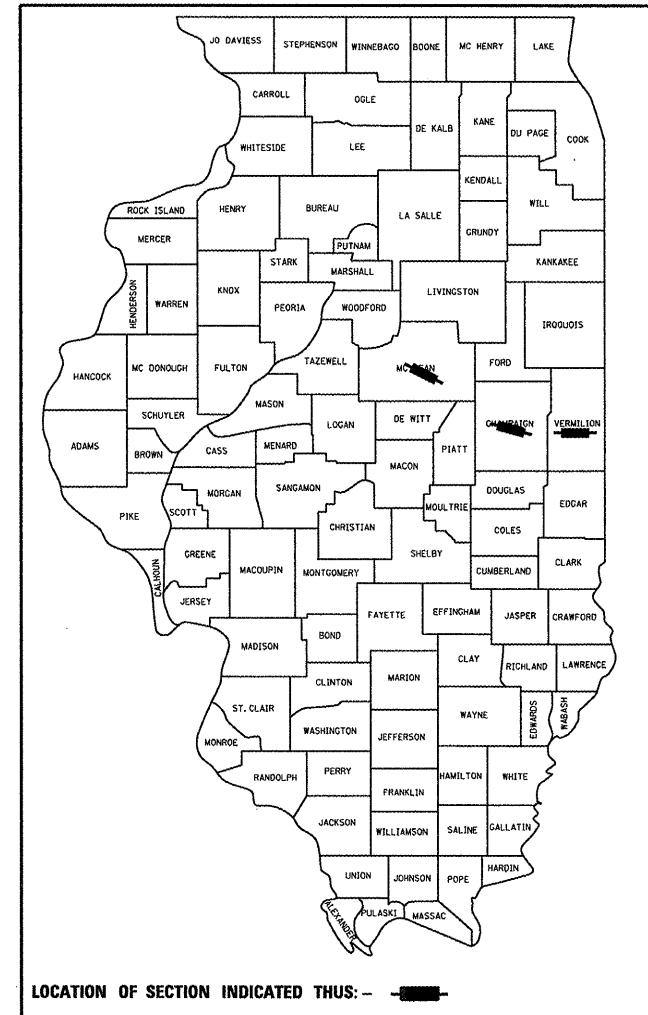
PROJECT ENGINEER: TIM BRANDENBURG
PROJECT MANAGER: TIM BRANDENBURG
(217)465-4181

CONTRACT NO. 70861

F.A.I. RTE.	SECTION	COUNTY	TOTAL SHEETS	SHEET NO.
74	*	**	19	1
ILLINOIS		CONTRACT NO. 70861		

•FY2011 BRIDGE DECK SEALING
••CHAMPAIGN, MCLEAN & VERMILION

D-95-033-10



STATE OF ILLINOIS
DEPARTMENT OF TRANSPORTATION
DIVISION OF HIGHWAYS

SUBMITTED

11/9 2010

DEPUTY DIRECTOR OF HIGHWAYS, REGION ENGINEER

Feb 4 2011

acting Scott E. Stitt, P.E. 1st
ENGINEER OF DESIGN AND ENVIRONMENT

Feb 4 2011

Christine M. Reed 1st
DIRECTOR OF HIGHWAYS, CHIEF ENGINEER

PRINTED BY THE AUTHORITY
OF THE STATE OF ILLINOIS