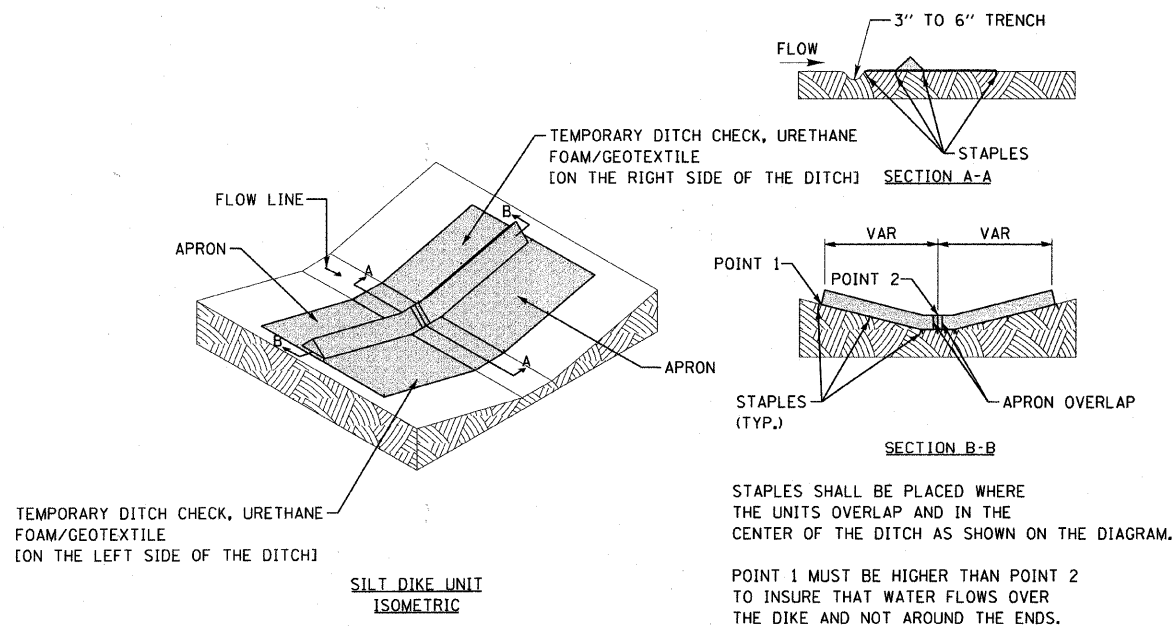
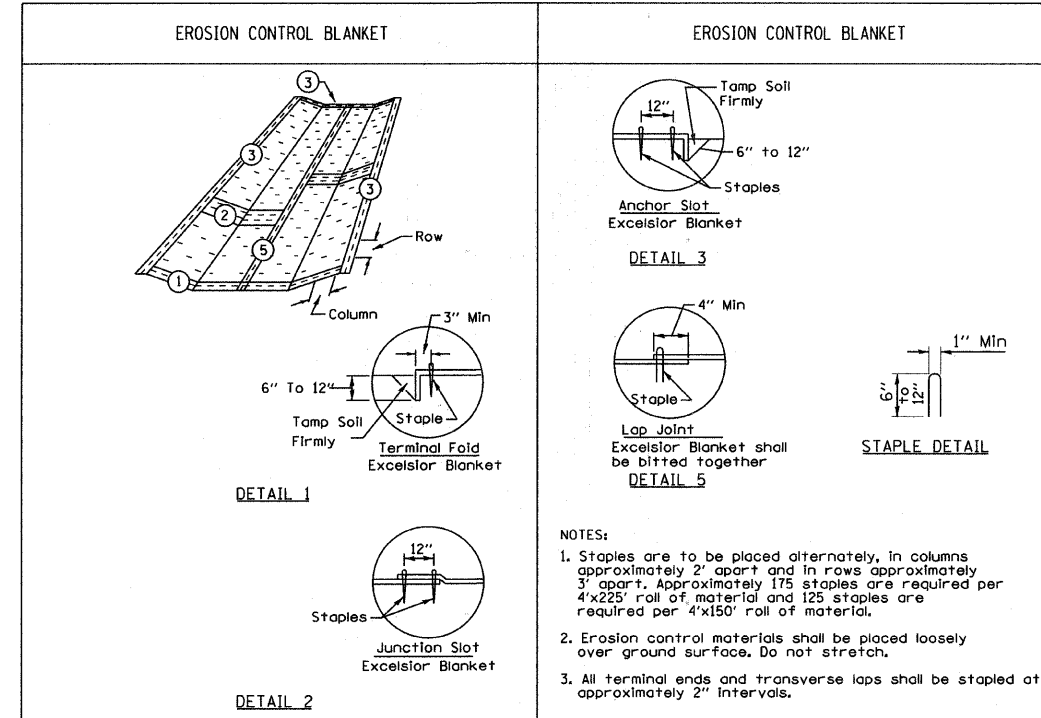


•INSTALL PER IDOT STANDARD 280001-05
 •• PAID FOR AS PERIMETER EROSION BARRIER

DRAINAGE PROTECTION
 NOT TO SCALE

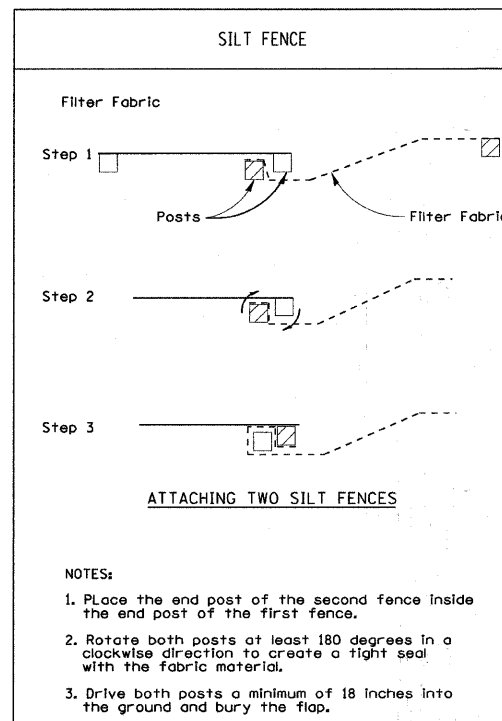


TEMPORARY DITCH CHECK, URETHANE
 FOAM/GEOTEXTILE
 (ON THE LEFT SIDE OF THE DITCH)

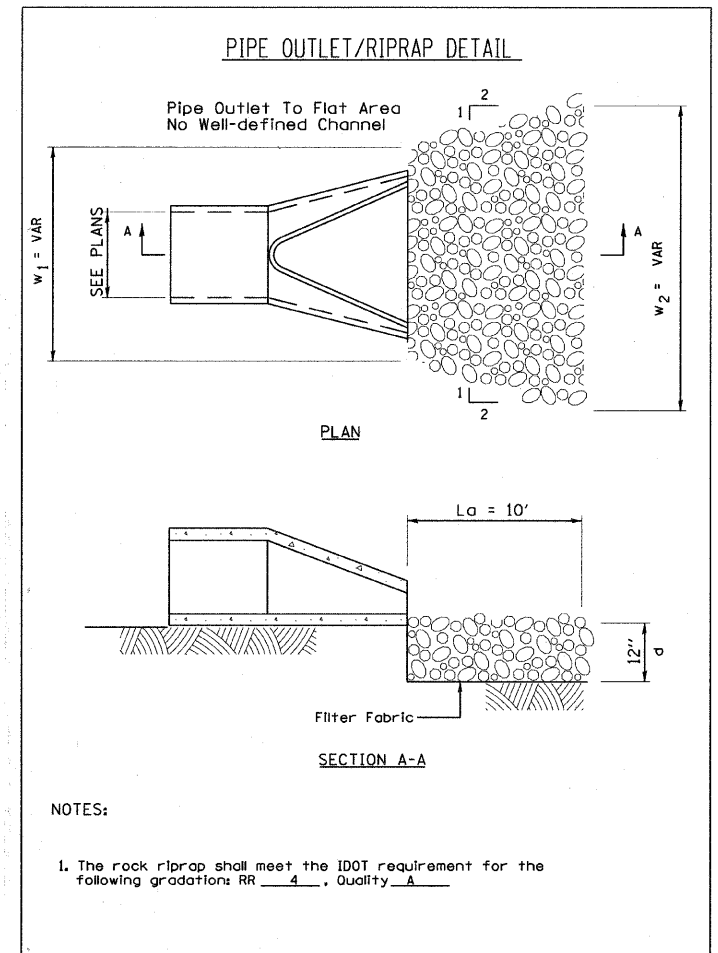
**SILT DIKE UNIT
 ISOMETRIC**

NOTES:
 1. THE INSTALLATION SHOWN ABOVE WILL BE MEASURED FOR
 PAYMENT IN FEET PERPENDICULAR TO THE FLOW LINE.

TEMPORARY DITCH CHECK
 NO SCALE



NOTES:
 1. Place the end post of the second fence inside
 the end post of the first fence.
 2. Rotate both posts at least 180 degrees in a
 clockwise direction to create a tight seal
 with the fabric material.
 3. Drive both posts a minimum of 18 inches into
 the ground and bury the flap.



NOTES:
 1. The rock riprap shall meet the IDOT requirement for the
 following gradation: RR 4, Quality A

COPYRIGHT © 2010 BY BAXTER & WOODMAN, INC.
 ALL RIGHTS RESERVED. 070630-Details.sht
 DRAWN BY: BCD
 CHECKED BY: MDW
 DATE: 08/20/10
 FILE: 070630-Details.sht
 PROJECT: UNION ROAD BRIDGE REPLACEMENT AND ROADWAY RECONSTRUCTION
 CONTRACT NO. 63536



DESIGNED	- CAC	REVISED	-
DRAWN	- BCD	REVISED	-
CHECKED	- MDW	REVISED	-
DATE	- 08/20/10	FILE	- 070630-Details.sht

**MCHENRY COUNTY DIVISION OF TRANSPORTATION
 UNION ROAD BRIDGE REPLACEMENT
 AND ROADWAY RECONSTRUCTION**

MISCELLANEOUS DETAILS

SCALE: NONE

STA. TO STA.

F.A.S. RTE.	SECTION	COUNTY	TOTAL SHEETS	SHEET NO.
0034	06-00320-02-BR	MCHENRY	65	53
CONTRACT NO. 63536				
JOB NO. C-91-140-11		ILLINOIS FED. AID PROJECT		BRS-0034(107)