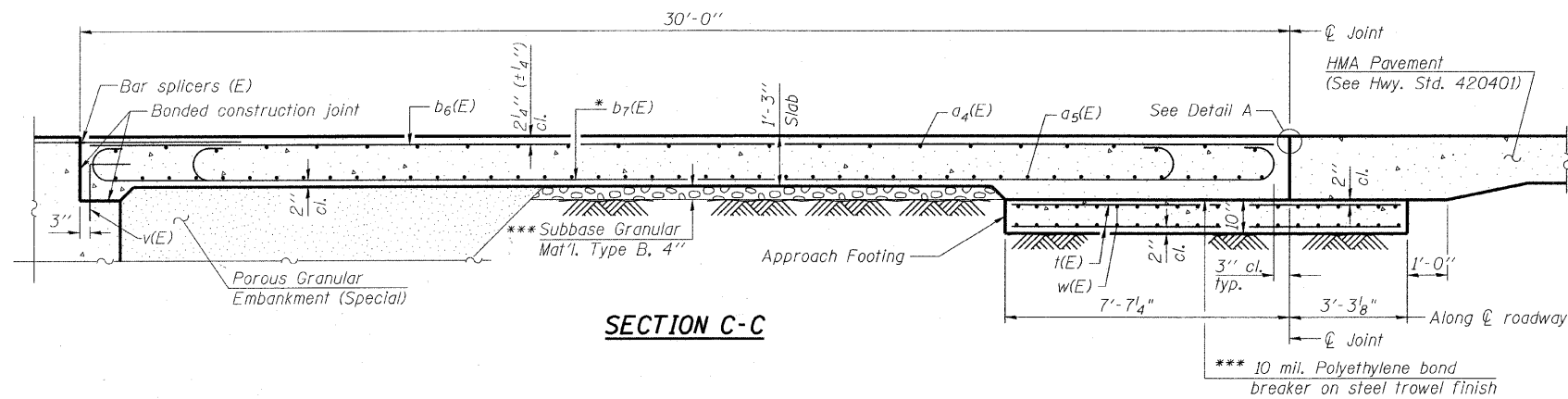


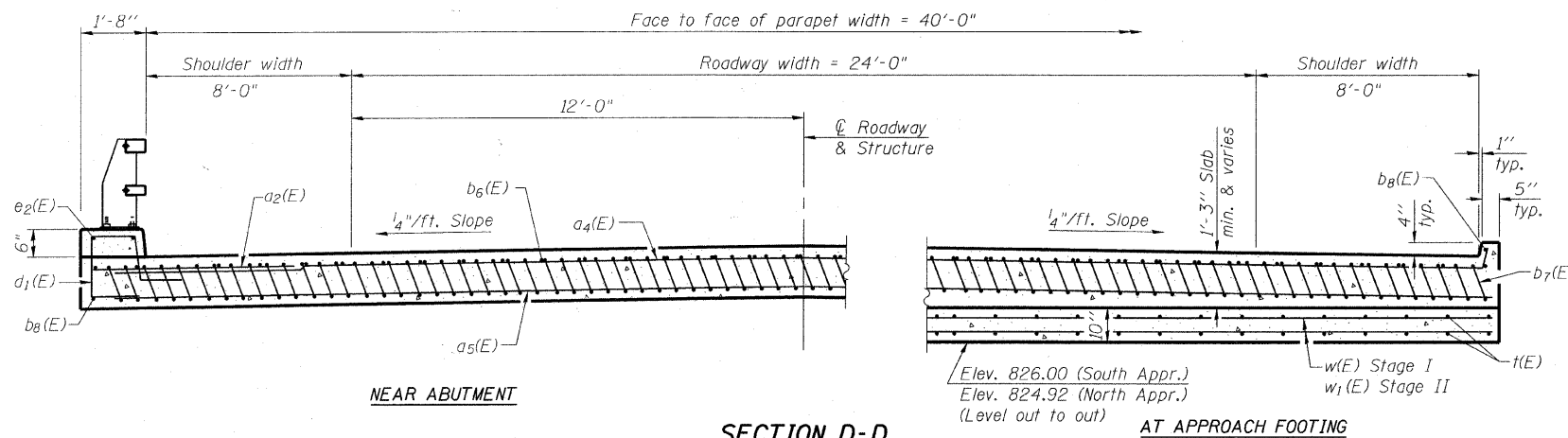
MCHENRY COUNTY  
DIVISION OF TRANSPORTATION

Notes:

See sheet 11 of 23 for Detail A and View B-B.  
Approach slab and curb concrete shall be paid for as Concrete Superstructure.  
Approach footing concrete shall be paid for as Concrete Structures.  
Reinforcement shall be paid for as Reinforcement Bars, Epoxy Coated.  
For v(E) bar details, see sheet 10 of 23.  
The approach footing maximum applied service bearing pressure (Qmax) = 2.0 ksf.  
For bar splicer details, see sheet 21 of 23.  
Cost of excavation for approach footing included with Concrete Structures.  
For Porous Granular Embankment (Special) and drainage treatment details, see sheet 2 of 23.  
For additional curb details, see sheet 9 of 23.



SECTION C-C



NEAR ABUTMENT

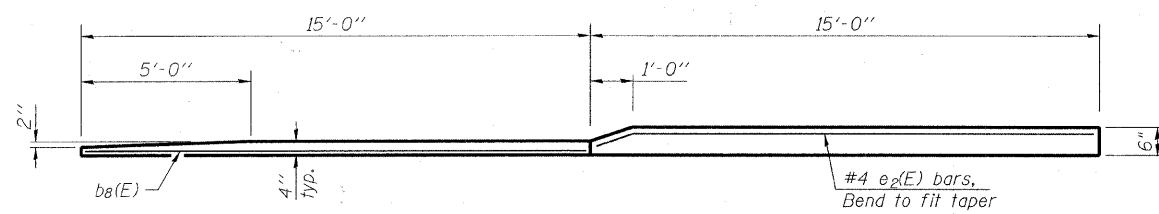
SECTION D-D

(See Plan for dimensions not shown)

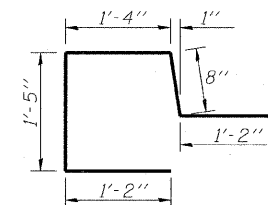
AT APPROACH FOOTING

\* Tilt #9 b7(E) bars as required to maintain clearance.

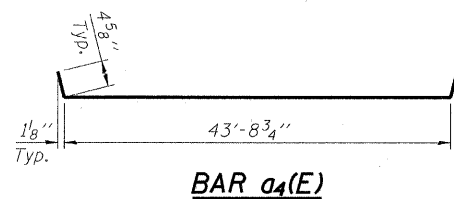
\*\*\* Cost included with Concrete Superstructure.



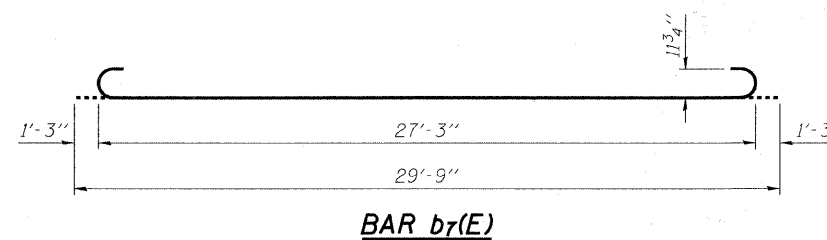
VIEW E-E



BAR d1(E)



BAR a4(E)



BAR b7(E)

TWO APPROACHES  
BILL OF MATERIAL

Bar	No.	Size	Length	Shape
a2(E)	48	#6	6'-6"	—
a4(E)	50	#4	44'-6"	—
a5(E)	92	#5	44'-2"	—
b6(E)	66	#4	29'-8"	—
b7(E)	196	#9	29'-9"	—
b8(E)	8	#4	14'-8"	—
d1(E)	76	#5	5'-9"	□
e2(E)	8	#4	14'-8"	—
t(E)	168	#4	10'-6"	—
w(E)	80	#5	44'-2"	—
Concrete Superstructure		Cu. Yd.	127.7	
Concrete Structures		Cu. Yd.	27.5	
Reinforcement Bars, Epoxy Coated		Pound	32810	
Bridge Deck Grooving		Sq. Yd.	245	
Protective Coat		Sq. Yd.	287	

(Sheet 2 of 2)

BRIDGE APPROACH SLAB DETAILS  
STRUCTURE NO. 056-3178

DESIGNED	BLB
CHECKED	AS
DRAWN	BCD
CHECKED	BLB

SHEET NO. 12 23 SHEETS	F.A.S. RTE. 0034	SECTION 06-00320-02-BR	COUNTY MCHENRY	TOTAL SHEETS 65	SHEET NO. 37
	CONTRACT NO. 63536				
JOB NO. C-91-140-11		ILLINOIS	FED. AID PROJECT	BRS-0034(107)	