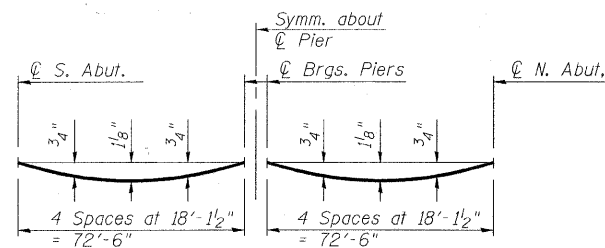
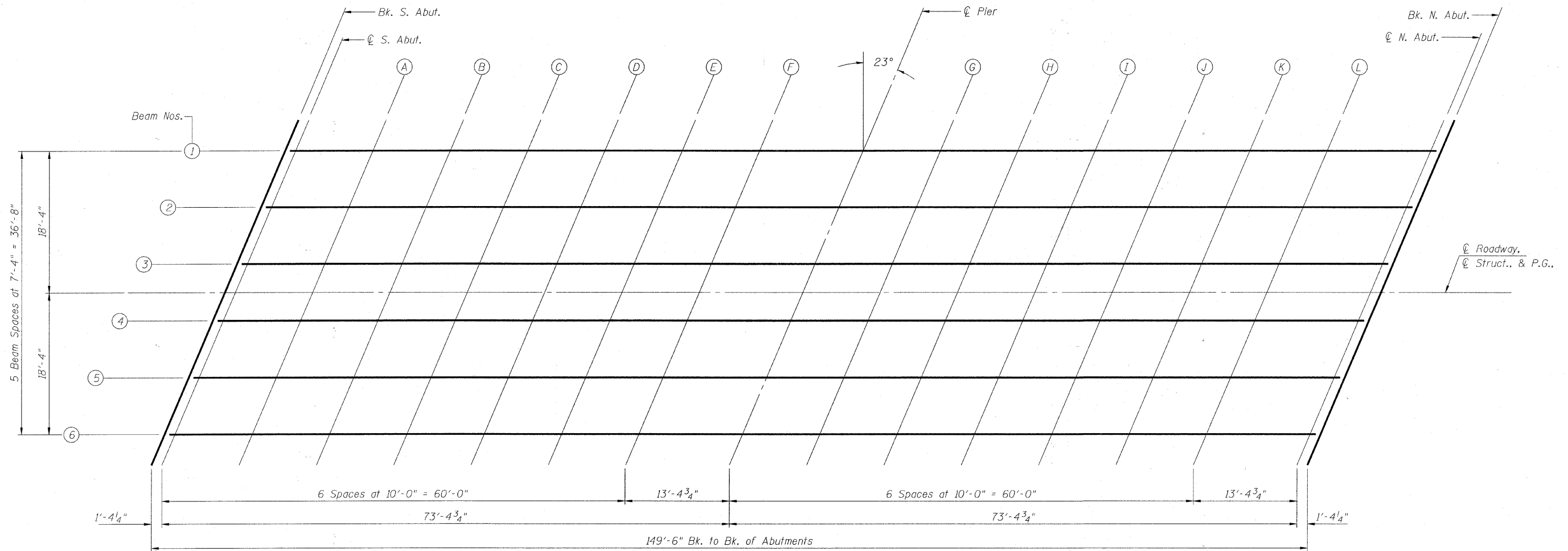


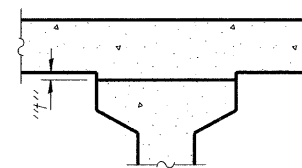
MCHENRY COUNTY
DIVISION OF TRANSPORTATION



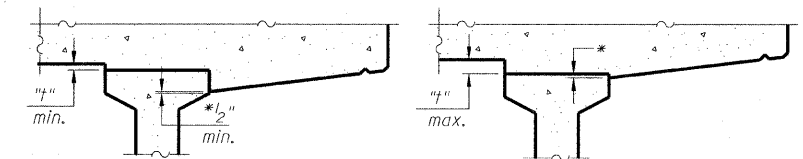
DEAD LOAD DEFLECTION DIAGRAM

(Includes weight of concrete, excluding beams).

Note:
The above deflections are not to be used in the field if the engineer is working from the grade elevations adjusted for dead load deflections as shown in the plans.



INTERIOR BEAMS



* Variable (not less than 1/2")

At Minimum Fillet

At Maximum Fillet

FILLET HEIGHTS

EXTERIOR BEAMS

To determine "f": After all precast prestressed beams have been erected, elevations of the top flanges of the beams shall be taken at intervals shown above. These elevations subtracted from the "Theoretical Grade Elevations Adjusted for Dead Load Deflections" shown in the plans, minus slab thickness, equals the fillet heights "f" above top flanges of beams.

**TOP OF SLAB ELEVATIONS
STRUCTURE NO. 056-3178**

DESIGNED	BLB
CHECKED	AS
DRAWN	BCD
CHECKED	BLB

SHEET NO. 3 23 SHEETS	F.A.S. RTE.	SECTION	COUNTY	TOTAL SHEETS	SHEET NO.
	0034	06-00320-02-BR	MCHENRY	65	28
JOB NO. C-91-140-11			ILLINOIS	FED. AID PROJECT BRS-0034(107)	
CONTRACT NO. 63536					

COPYRIGHT © 2005 BY BAXTER & WOODMAN, INC.
 STATE OF ILLINOIS - PROFESSIONAL DESIGN FIRM
 LICENSE NO. 061-070600-001-001
 545 N. WASHINGTON ST., SUITE 200
 CHICAGO, IL 60610-4200