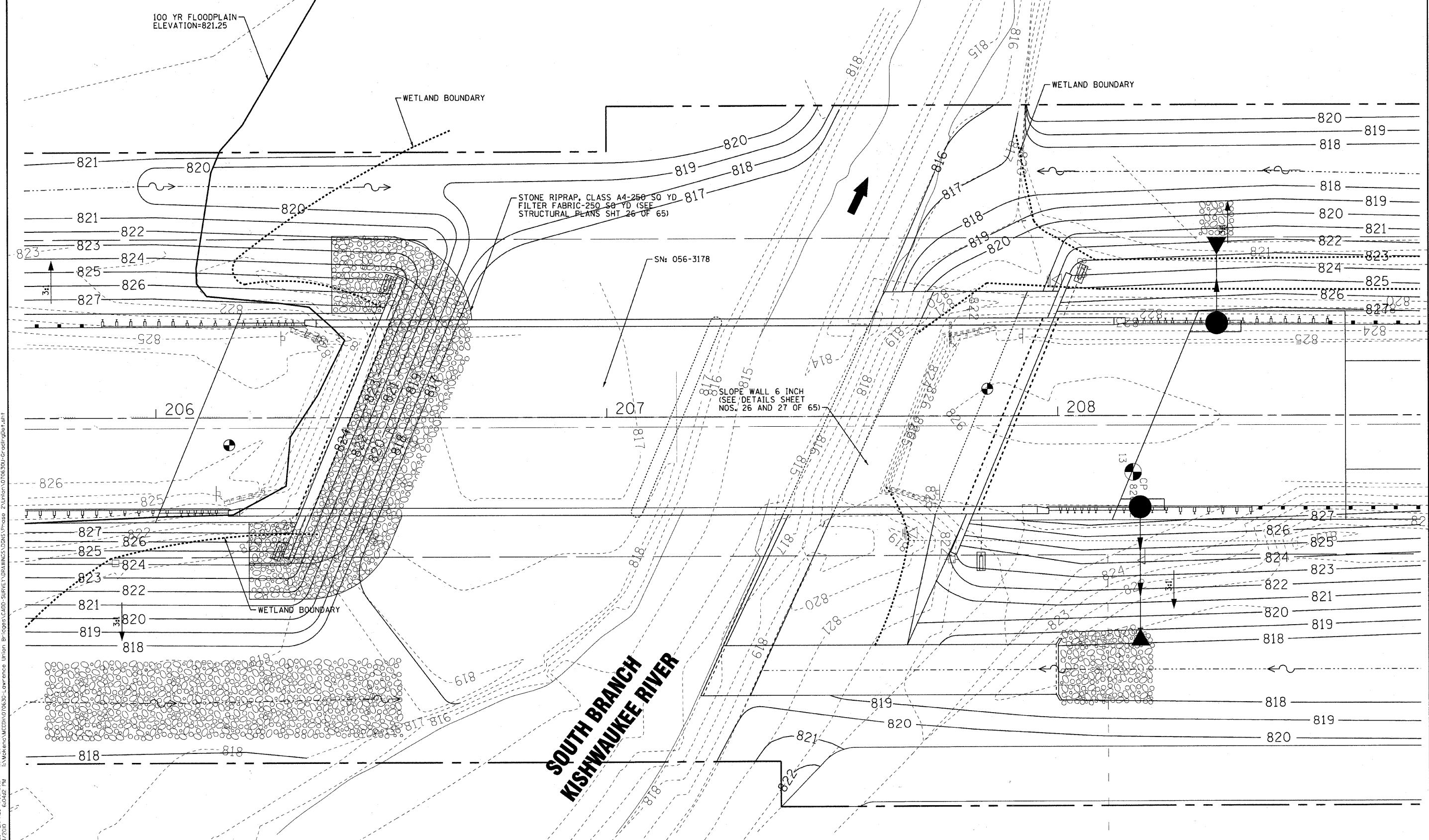
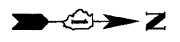


NOTES:

1. ACTUAL GRADING LIMITS TO BE DETERMINED BY RESIDENT ENGINEER.
2. SEE STRUCTURAL PLANS FOR WINGWALL, ABUTMENT, PIER AND RIPRAP DETAILS.



COPYRIGHT © 2010 BY BAXTER & WOODMAN, INC.
 STATE OF ILLINOIS - PROFESSIONAL DESIGN FIRM
 555 E. WASHINGTON ST., SUITE 200, CHICAGO, IL 60601
 TEL: 312.467.1000 FAX: 312.467.1001
 WWW.BAXTERANDWOODMAN.COM
 PROJECT: MCHENRY COUNTY DIVISION OF TRANSPORTATION
 UNION ROAD BRIDGE OVER SOUTH BRANCH OF KISHWAUKEE RIVER
 SHEET: 20 OF 65
 DATE: 08/20/10



DESIGNED - CAC	REVISED - PER IDOT 10-08-10
DRAWN - BCD	REVISED -
CHECKED - MDW	REVISED -
DATE - 08/20/10	FILE - 070630U-GradingDet.sht

MCHENRY COUNTY DIVISION OF TRANSPORTATION
UNION ROAD BRIDGE OVER
SOUTH BRANCH OF KISHWAUKEE RIVER

GRADING DETAIL AT BRIDGE ABUTMENTS
 SCALE: 1"=10'
 STA. TO STA.

F.A.S. RTE. 0034	SECTION 06-00320-02-BR	COUNTY MCHENRY	TOTAL SHEETS 65	SHEET NO. 20
JOB NO. C-91-140-11		ILLINOIS FED. AID PROJECT		CONTRACT NO. 63536
BRS-0034(107)				