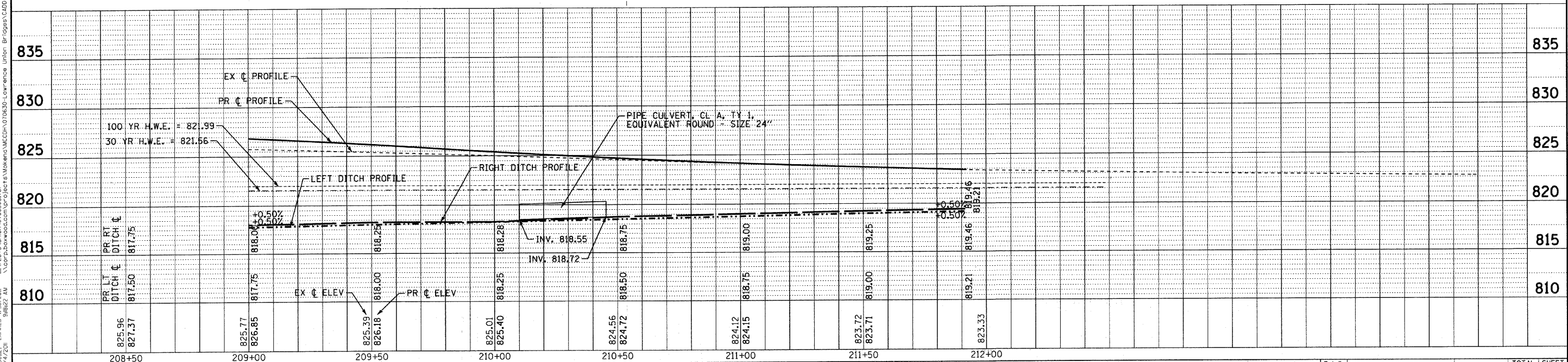


**UNION ROAD**

COPYRIGHT © 2010 BY BAXTER & WOODMAN, INC.  
 STATE OF ILLINOIS - PROFESSIONAL DESIGN FIRM  
 LICENSE NO. - 06-00223 - EXPIRES 8/20/2011  
 PROJECT: 06-00320-02-BR - SOUTH BRANCH OF KISHWAUKEE RIVER  
 DRAWING: 070630-PH2-UNION-DU3.sht



	DESIGNED - CAC	REVISED - PER IDOT 10-08-10	<b>MCHENRY COUNTY DIVISION OF TRANSPORTATION</b> <b>UNION ROAD BRIDGE OVER</b> <b>SOUTH BRANCH OF KISHWAUKEE RIVER</b>	<b>DRAINAGE &amp; UTILITY PLAN</b>		F.A.S. RTE. 0034	SECTION 06-00320-02-BR	COUNTY MCHENRY	TOTAL SHEETS 65	SHEET NO. 19
	DRAWN - BCD	REVISED -				CONTRACT NO. 63536				
	CHECKED - MDW	REVISED -		SCALE: H: 1"=20' V: 1"=5'	STA. 209+00 TO STA. 214+00	JOB NO. C-91-140-11	ILLINOIS FED. AID PROJECT	BRS-00341077		
	DATE - 08/20/10	FILE - 070630-PH2-UNION-DU3.sht								