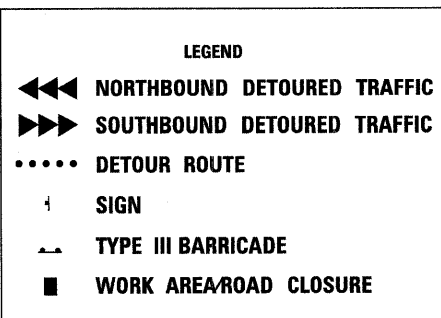


MAINTENANCE OF TRAFFIC NOTES:

1. SIGNING AND BARRICADE PLACEMENT SHALL BE IN ACCORDANCE WITH THE LATEST IDOT HIGHWAY STANDARDS AND IDOT DISTRICT 1 STANDARD DETAILS.
2. THE ENGINEER SHALL BE INFORMED 48 HOURS IN ADVANCE OF ANY CHANGE IN CONSTRUCTION STAGING.
3. THE FURNISHING, INSTALLING, AND RELOCATION OF ALL TRAFFIC SIGNS SHALL BE INCLUDED IN THE COST OF TRAFFIC CONTROL AND PROTECTION FOR TEMPORARY DETOUR. ALL CONFLICTING TRAFFIC SIGNS SHALL BE COVERED AS DIRECTED BY THE ENGINEER. THIS SHALL BE INCLUDED IN THE COST OF TRAFFIC CONTROL AND PROTECTION FOR TEMPORARY DETOUR.
4. EROSION AND SEDIMENT CONTROLS SHALL BE INSTALLED PRIOR TO START OF CONSTRUCTION WITH CONTINUED MAINTENANCE FOR THE DURATION OF CONSTRUCTION, SEE EROSION CONTROL SHEETS FOR ADDITIONAL INFORMATION.
5. THE CONTRACTOR SHALL MAINTAIN EMERGENCY VEHICLE AND LOCAL TRAFFIC DURING THE CONSTRUCTION. THE COST FOR MAINTAINING ACCESS ON UNION ROAD SHALL BE INCLUDED IN THE COST OF TRAFFIC CONTROL AND PROTECTION FOR TEMPORARY DETOUR.
6. THE CONTRACTOR SHALL PROVIDE TEMPORARY ACCESS TO ALL ENTRANCES DURING THE CONSTRUCTION OF UNION ROAD AND UNION BRIDGE OVER THE SOUTH BRANCH KISHAWAUKEE RIVER. THIS WORK SHALL BE PAID FOR AT THE CONTRACT UNIT PRICE PER EACH FOR TEMPORARY ACCESS (ROAD), TEMPORARY ACCESS (PRIVATE ENTRANCE) AND TEMPORARY ACCESS (FIELD ENTRANCE).



SIGN DETAILS

COPYRIGHT © 2010 BY BAXTER & WOODMAN, INC. PROJECT: 06-00320-02-BR. DRAWN: BCD. CHECKED: MDW. DATE: 08/20/10. FILE: 070630-Union-Detour.sht.



DESIGNED - CAC	REVISED - PER IDOT 10-08-10
DRAWN - BCD	REVISED -
CHECKED - MDW	REVISED -
DATE - 08/20/10	FILE - 070630-Union-Detour.sht

**MCHENRY COUNTY DIVISION OF TRANSPORTATION
UNION ROAD BRIDGE OVER
SOUTH BRANCH OF KISHAWAUKEE RIVER**

TEMPORARY DETOUR PLAN

SCALE: NONE STA. TO STA.

F.A.S. RTE.	SECTION	COUNTY	TOTAL SHEETS	SHEET NO.
0034	06-00320-02-BR	MCHENRY	65	12
JOB NO. C-91-140-11 ILLINOIS FED. AID PROJECT			CONTRACT NO. 63536	
			BRS-00341071	