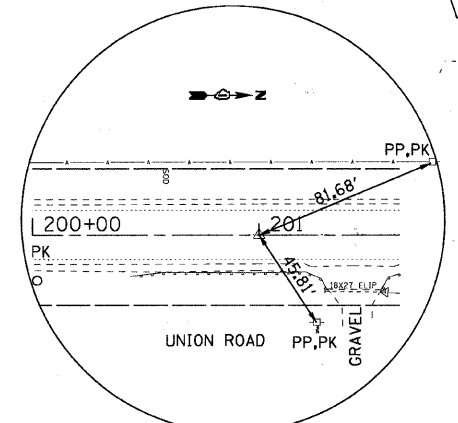
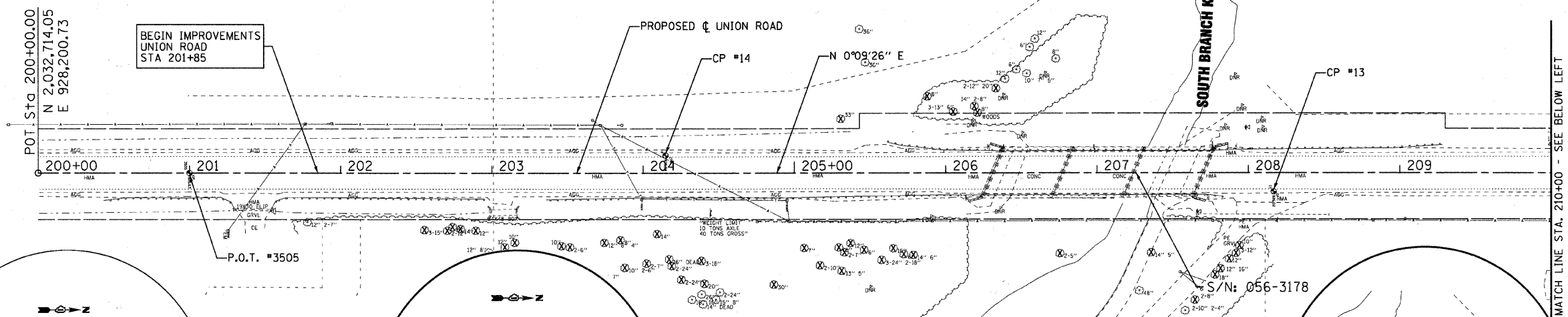
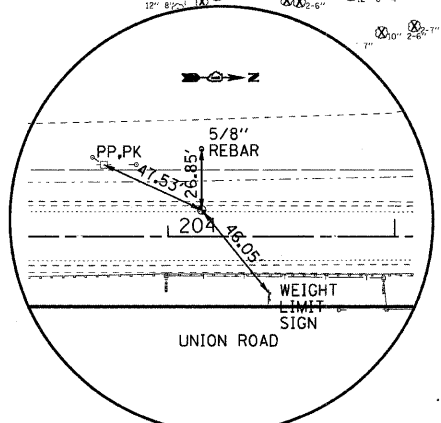


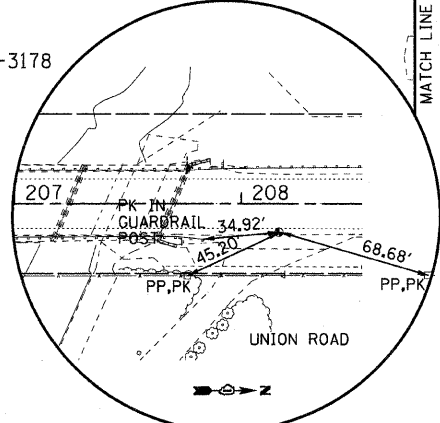
COPYRIGHT © 2010 BY BAXTER & WOODMAN, INC.
 ALL RIGHTS RESERVED. THIS DRAWING IS THE PROPERTY OF BAXTER & WOODMAN, INC. AND IS NOT TO BE REPRODUCED OR TRANSMITTED IN ANY FORM OR BY ANY MEANS, ELECTRONIC OR MECHANICAL, INCLUDING PHOTOCOPYING, RECORDING, OR BY ANY INFORMATION STORAGE AND RETRIEVAL SYSTEM, WITHOUT THE WRITTEN PERMISSION OF BAXTER & WOODMAN, INC.
 LICENSE NO. 184-00193 - EXPIRES 4/30/2011
 16226 PM 12/19/2010



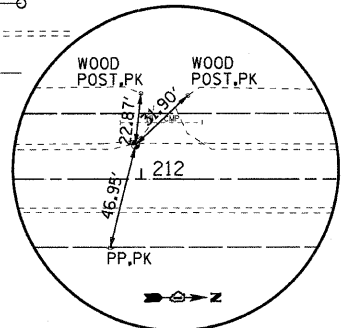
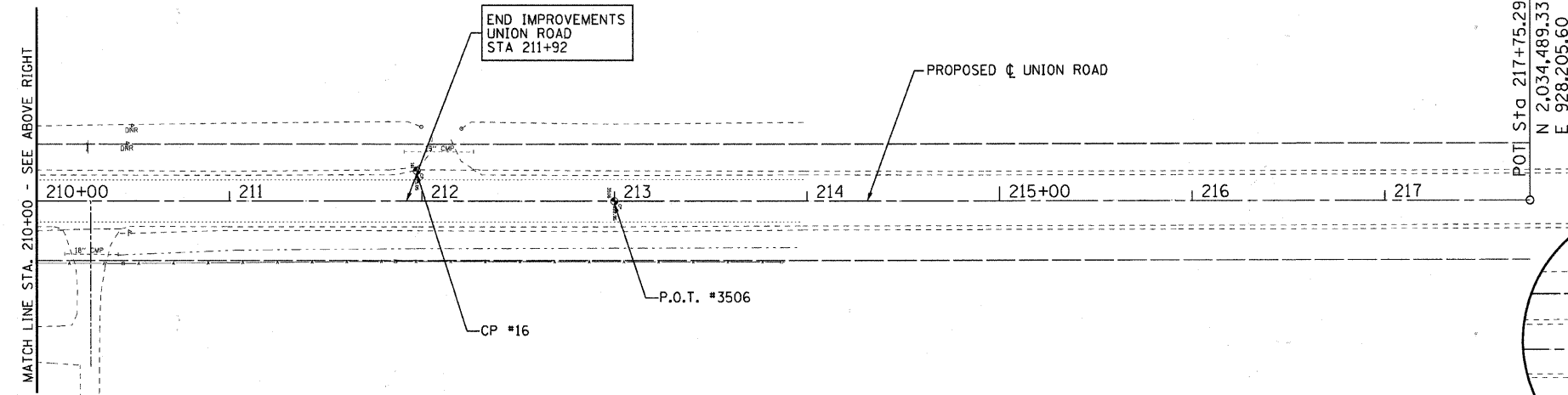
HORIZONTAL CONTROL
 P.O.T. #3505 STA 201+00.00
 UNION ROAD
 N 2032814.050, E 928201.000
 ELEV = 826.63



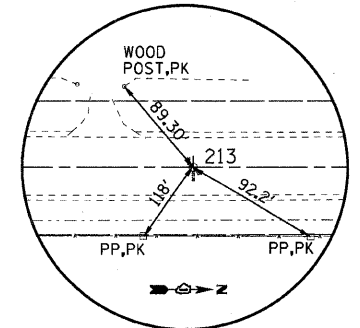
TIE-POINT
 CP #14 STA 204+15.00
 UNION ROAD
 N 2033128.937, E 928190.154



TIE-POINT
 CP #13 STA 208+17.00
 UNION ROAD
 N 2033530.682, E 928215.465



TIE-POINT
 CP #16 STA 211+97
 UNION ROAD
 N 2033911.481, E 928188.457



HORIZONTAL CONTROL
 P.O.T. #3506 STA 213+00.00
 UNION ROAD
 N 2034014.040, E 928204.290
 ELEV = 822.95

BENCHMARKS
 CP #13 - ELEV=826.02 PK NAIL SET IN HMA. (DATUM NAVD 88)
 CP #14 - ELEV=826.34 PK NAIL SET IN HMA. (DATUM NAVD 88)
 CP #16 - ELEV=823.05 PK NAIL SET IN HMA. (DATUM NAVD 88)



DESIGNED - CAC	REVISED - PER IDOT 10-08-10
DRAWN - BCD	REVISED -
CHECKED - MOW	REVISED -
DATE - 08/20/10	FILE - 070630-UnionAlign&Ties.sit

**MCHENRY COUNTY DIVISION OF TRANSPORTATION
 UNION ROAD BRIDGE OVER
 SOUTH BRANCH OF KISHWAUKEE RIVER**

ALIGNMENT & TIES

SCALE: 1"=40'	STA.	TO STA.
---------------	------	---------

F.A.S. RTE.	SECTION	COUNTY	TOTAL SHEETS	SHEET NO.
0034	06-00320-02-BR	MCHENRY	65	10
CONTRACT NO. 63536				
JOB NO. C-91-140-11			ILLINOIS FED. AID PROJECT BRS-0034(107)	