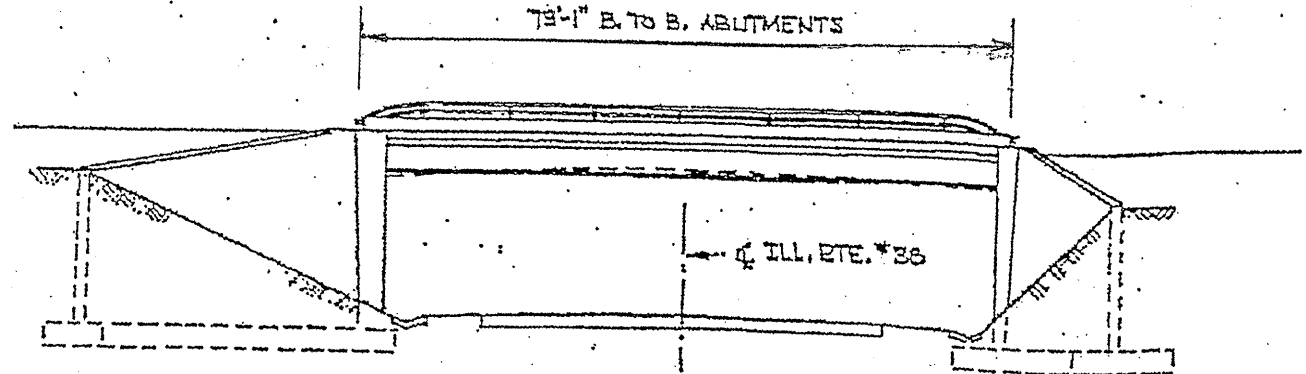
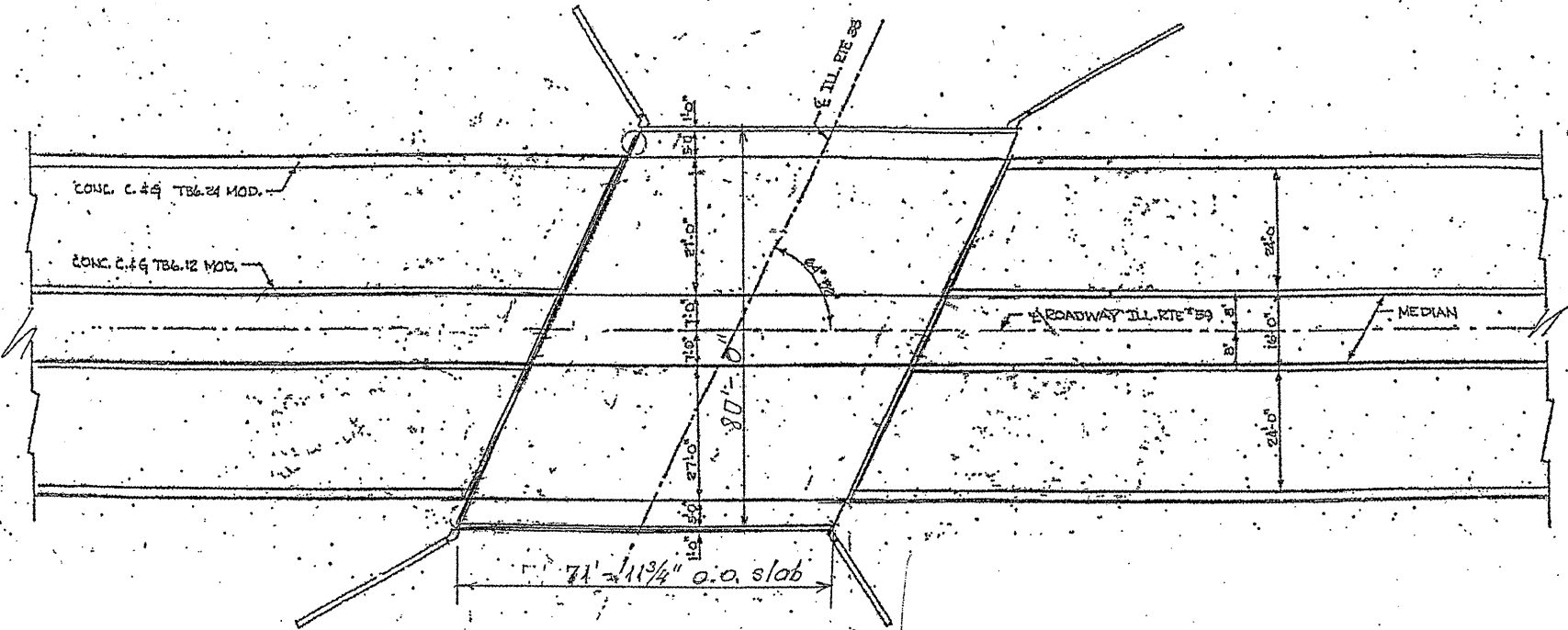
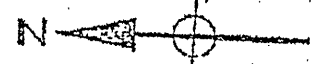


| ROUTE   | SECTION    | COUNTY | TOTAL SHEETS | SHEET NUMBER |
|---------|------------|--------|--------------|--------------|
| FAP 338 | 2010-123-I | DUPAGE | 11           | 8            |

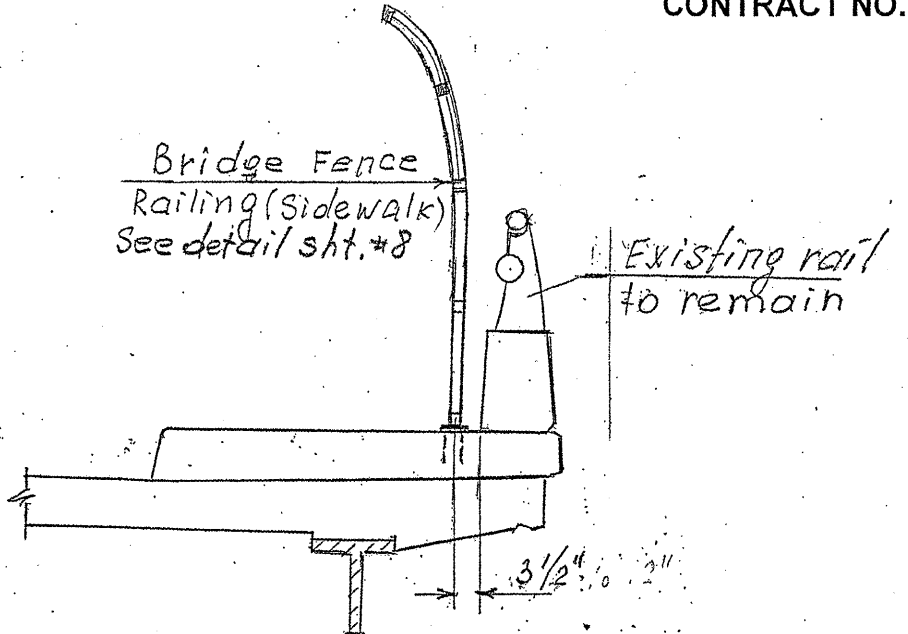
CONTRACT NO.: 60M60



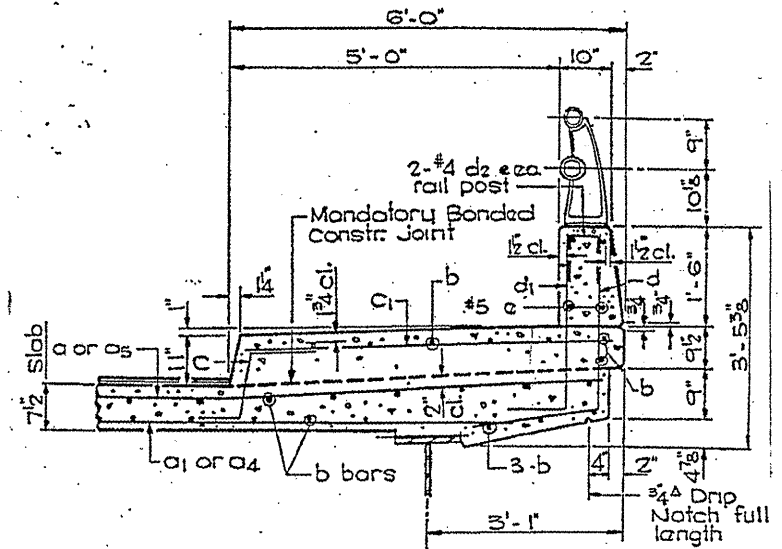
ELEVATION



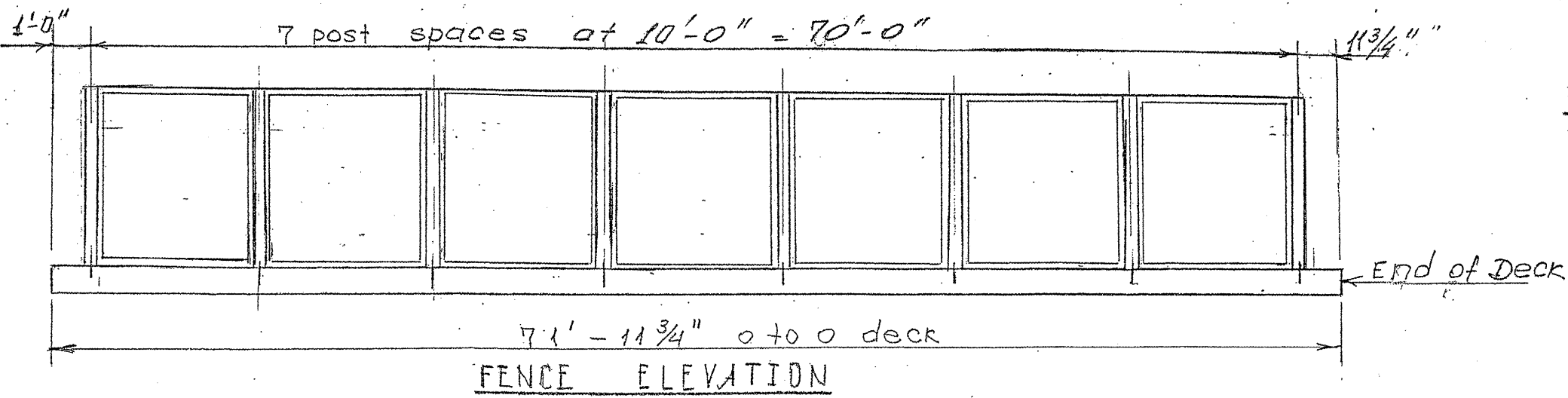
PLAN



PROPOSED SECTION THRU SIDEWALK



EXISTING SECTION THRU SIDEWALK



FENCE ELEVATION

**ILLINOIS DEPARTMENT OF  
TRANSPORTATION**  
  
**IL 59 (NELTNOR BLVD)  
BRIDGE FENCE RAILING  
SIDEWALK MOUNTED (SN 022-0036)**