

F.A.S. RTE.	SECTION	COUNTY	TOTAL SHEETS	SHEET NO.
2320	113X-RS-4	WILL	13	1
ILLINOIS			CONTRACT NO. 60L59	

STATE OF ILLINOIS
DEPARTMENT OF TRANSPORTATION
DIVISION OF HIGHWAYS

**PROPOSED
HIGHWAY PLANS**

FAS ROUTE 2320 (IL 113)
SECTION 113X-RS-4
COAL CITY ROAD TO MAIN STREET
ROADWAY RESURFACING
WILL COUNTY
C-91-737-10

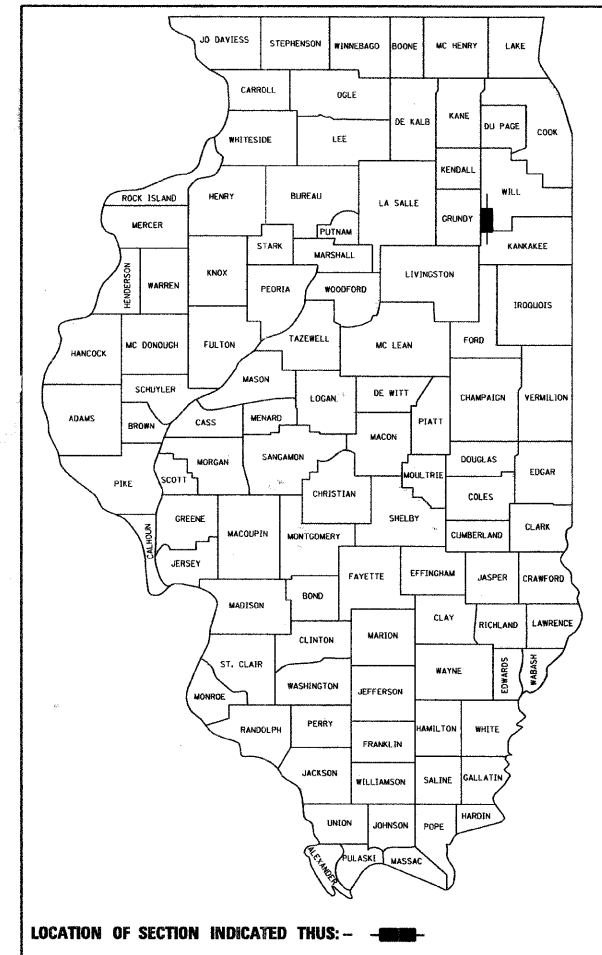
FOR INDEX OF SHEETS, SEE SHEET NO. 2

TRAFFIC DATA

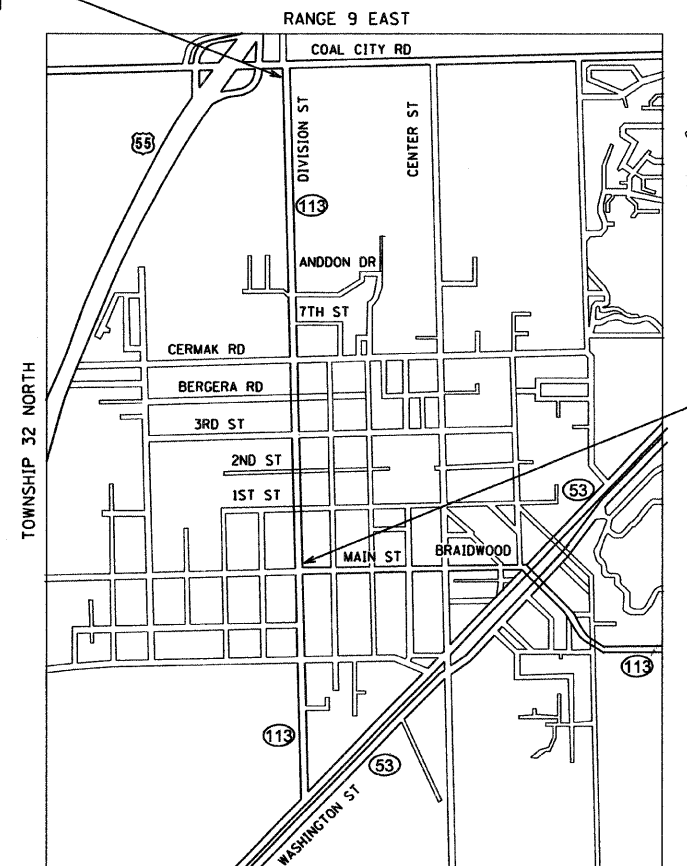
EXISTING ADT = 3550 (2007)
SPEED LIMIT = 35 MPH

THE IMPROVEMENT IS LOCATED WITHIN
THE CITY OF BRAIDWOOD

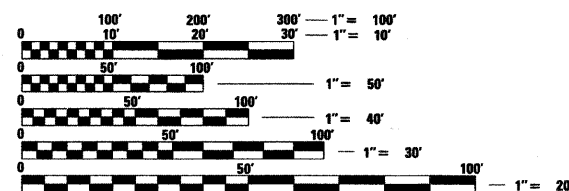
D-91-737-10



BEGIN IMPROVEMENT
STA. 0+13



BEGIN ENDS
STA. 89+69



FULL SIZE PLANS HAVE BEEN PREPARED USING STANDARD
ENGINEERING SCALES. REDUCED SIZED PLANS WILL NOT
CONFORM TO STANDARD SCALES. IN MAKING MEASUREMENTS
ON REDUCED PLANS, THE ABOVE SCALES MAY BE USED.

J.U.L.I.E.
JOINT UTILITY LOCATION INFORMATION FOR EXCAVATION
1-800-892-0123
OR 811

PROJECT ENGINEER: PETER JOHNSTON (GRAEF) 773-399-0112
PROJECT MANAGER: KEN ENG (IDOT) 847-705-4247

CONTRACT NO. 60L59

GROSS & NET LENGTH = 8,956 FT. = 1.70 MILES

Peter M. Johnston
10-15-10
PETER M. JOHNSTON
062-047647
REGISTERED
PROFESSIONAL
ENGINEER
OF
ILLINOIS
Exp. 11-30-11

STATE OF ILLINOIS
DEPARTMENT OF TRANSPORTATION
DIVISION OF HIGHWAYS
SUBMITTED October 18, 2010
Diana M. O'Keefe or
DEPUTY DIRECTOR OF HIGHWAYS, REGION ENGINEER
December 10, 2010
Scott E. Stitt, P.E.
acting ENGINEER OF DESIGN AND ENVIRONMENT
December 10, 2010
Christine M. Reed
DIRECTOR OF HIGHWAYS, CHIEF ENGINEER

PRINTED BY THE AUTHORITY
OF THE STATE OF ILLINOIS

GRAEF 8501 W. Higgins Road, Suite 280
Chicago, Illinois 60631
(773) 399-0112