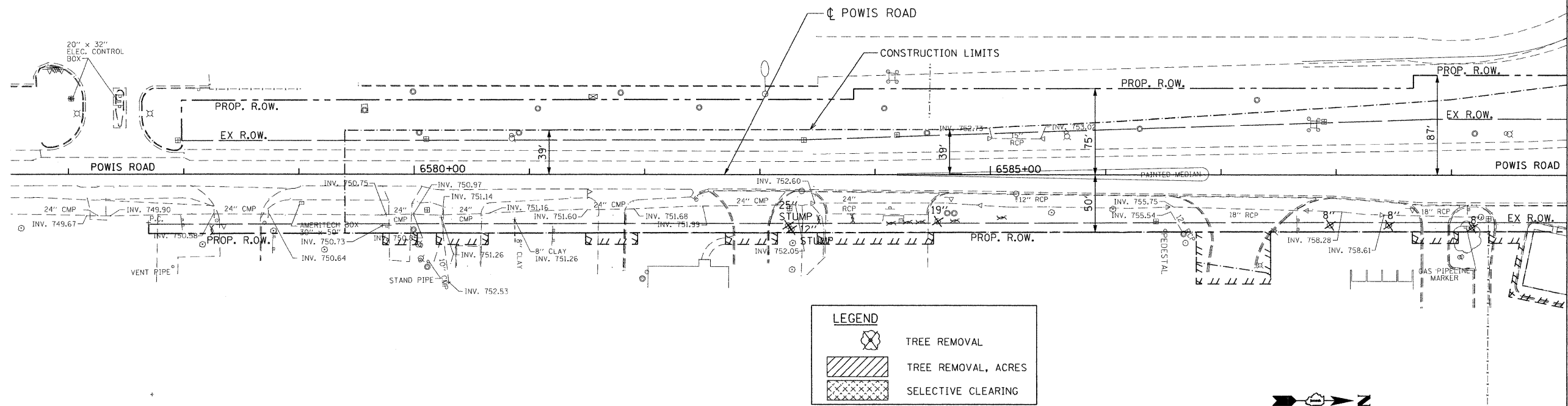
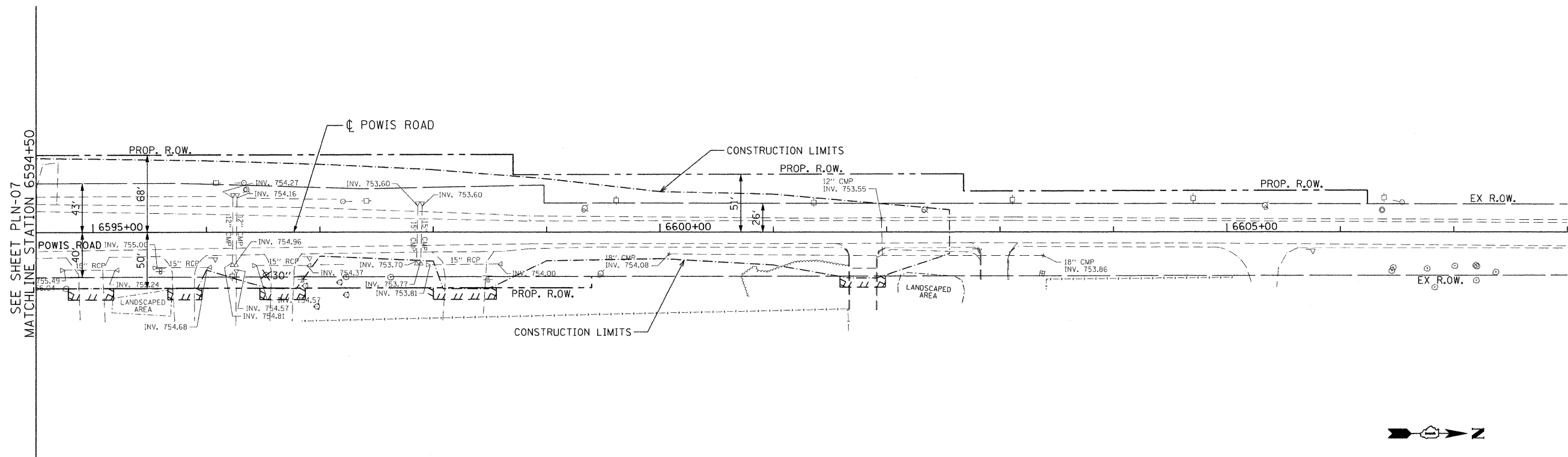


DUPAGE AIRPORT

DUPAGE AIRPORT



MATCHLINE STATION 6590+00  
SEE SHEET PLN-07



SEE SHEET PLN-07  
MATCHLINE STATION 6594+50

FILE NAME : P:\2009\m09006-verver-phi\cadd\wo18\_1164\_Shts\0160L57-sht-11.dgn  
USER NAME : Millennium Professional Services



200 21ND Street, Suite 216, Lombard, IL 60148  
630.705.0110 voice, 630.839.2566 fax  
www.mps-il.com  
**MILLENNIA PROFESSIONAL SERVICES**

DESIGNED - CJD/TVN	REVISED -
DRAWN - CJD	REVISED -
CHECKED - TVN	REVISED -
DATE - 10/27/2010	REVISED -

**STATE OF ILLINOIS  
DEPARTMENT OF TRANSPORTATION**

**ILLINOIS ROUTE 64  
7TH AVENUE TO IL 59**

**TREE REMOVAL PLAN  
SECTION - II**

F.A.P. RTE. 307	SECTION 2010-072-DTR	COUNTY	TOTAL SHEETS 23	SHEET NO. 22
CONTRACT NO. 60L57				

KANE & DUPAGE PLN-11

SCALE: 1"=50' SHEET NO. OF SHEETS STA. 6576+50 TO STA. 6608+00

FED. ROAD DIST. NO. 1 ILLINOIS FED. AID PROJECT

P:\2009\m09006-verver-phi\cadd\wo18\_1164\_Shts\0160L57-sht-11.dgn