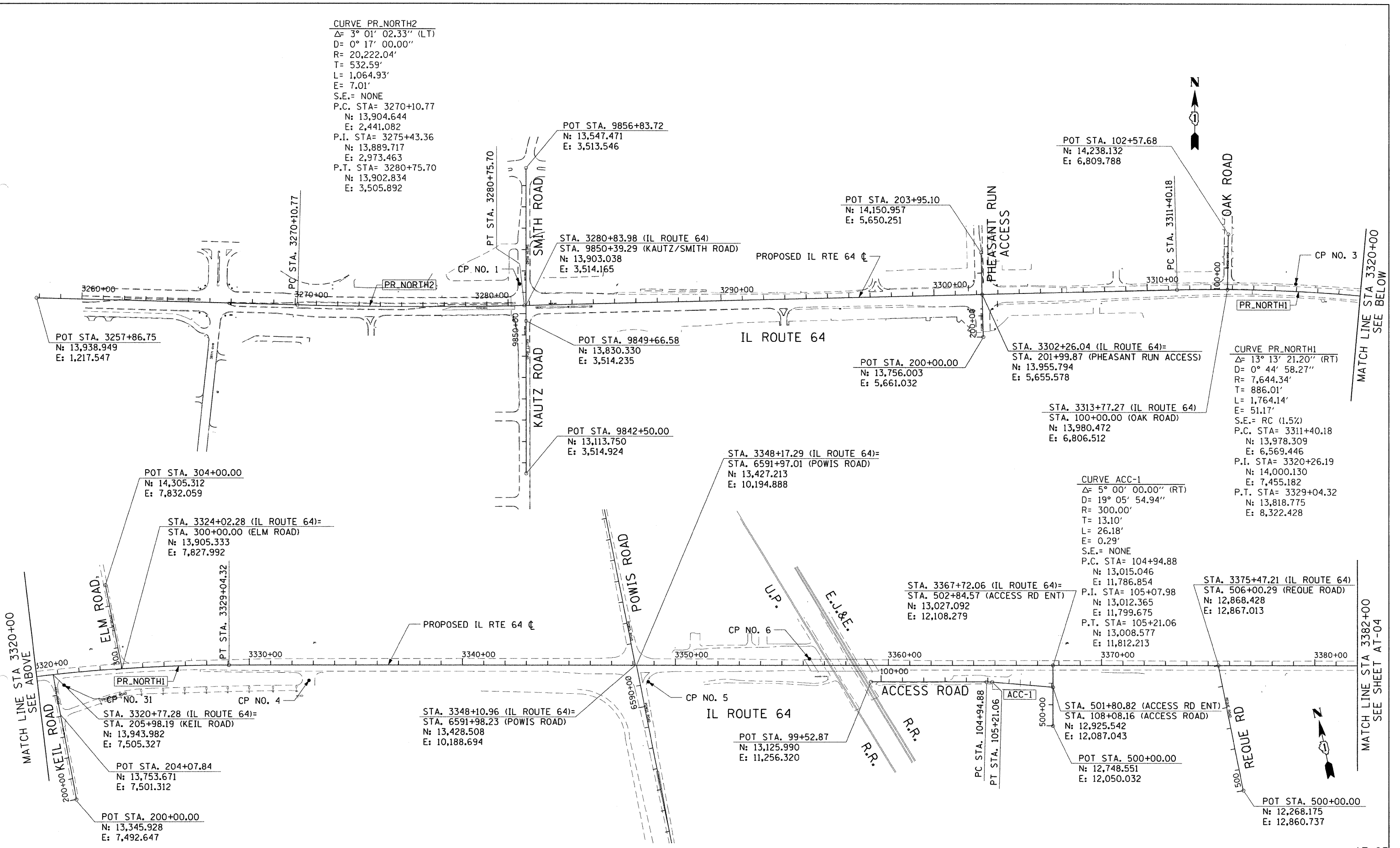


CURVE PR_NORTH2
 $\Delta = 3^{\circ} 01' 02.33''$ (LT)
 $D = 0^{\circ} 17' 00.00''$
 $R = 20,222.04'$
 $T = 532.59'$
 $L = 1,064.93'$
 $E = 7.01'$
 $S.E. = \text{NONE}$
P.C. STA = 3270+10.77
N: 13,904.644
E: 2,441.082
P.I. STA = 3275+43.36
N: 13,889.717
E: 2,973.463
P.T. STA = 3280+75.70
N: 13,902.834
E: 3,505.892



MATCH LINE STA 3320+00
SEE ABOVE

MATCH LINE STA 3320+00
SEE BELOW

MATCH LINE STA 3382+00
SEE SHEET AT-04

200 32ND Street, Suite 216, Lombard, IL 60148
630.705.0110 voice, 630.839.2566 fax
www.mps-il.com

MILLENNIA PROFESSIONAL SERVICES

DESIGNED - CJD	REVISED -
DRAWN - CJD	REVISED -
CHECKED - TVN	REVISED -
DATE - 10/26/2010	REVISED -

STATE OF ILLINOIS
DEPARTMENT OF TRANSPORTATION

ILLINOIS ROUTE 64
7TH AVENUE TO IL 59

ALIGNMENT, TIES AND CONTROL POINTS
SECTION - II

F.A.P. RTE. 307	SECTION 2010-072-DTR	COUNTY	TOTAL SHEETS 22	SHEET NO. 8
FED. ROAD DIST. NO. 1 ILLINOIS FED. AID PROJECT			CONTRACT NO. 60LS7	

* KANE & DUPAGE AT-03

P:\2009\ME09006_Var-Var_Plan\CADD\W018_IL64\Shets\0160L57-sht-Align-03-AE.dwg