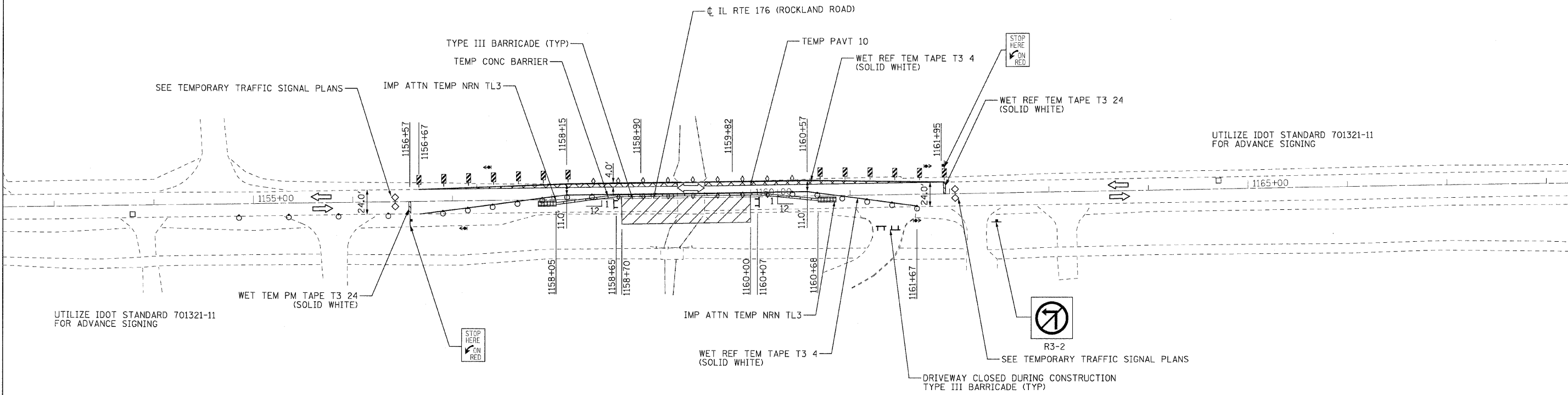




| | | |
|-----------|--------------------|------|
| PLAN | SURVEYED | DATE |
| NOTE BOOK | ALIGNMENT CHECKED | |
| NO. | RT. OF WAY CHECKED | |
| | ADD. FILE NAME | |

| | | |
|-----------|--------------------|------|
| PLAN | SURVEYED | DATE |
| NOTE BOOK | ALIGNMENT CHECKED | |
| NO. | RT. OF WAY CHECKED | |
| | ADD. FILE NAME | |



- LEGEND:**
- WORK AREA
 - TEMPORARY PAVEMENT
 - TEMPORARY CONCRETE BARRIER
 - SIGN
 - DRUM WITH STEADY BURNING BIDIRECTIONAL LIGHT
 - VERTICAL PANEL
 - TYPE III BARRICADE
 - IMPACT ATTENUATOR, TEMPORARY (NON-REDIRECTIVE, NARROW) TEST LEVEL 3
 - DIRECTION OF TRAFFIC
 - DIRECTION OF TRAFFIC
 - DETECTOR LOOPS
 - CRYSTAL, BIDIRECTIONAL BARRIER WALL/GUARDRAIL MARKER
 - TEMPORARY TRAFFIC SIGNAL

...D160J67-sh1-stagIngl.dgn
12/23/2010
9:42:15 AM



| | | | |
|----------|-----------------|---------|---|
| DESIGNED | JRB | REVISED | - |
| DRAWN | JRB | REVISED | - |
| CHECKED | RJD | REVISED | - |
| DATE | JANUARY 3, 2011 | REVISED | - |

STATE OF ILLINOIS
DEPARTMENT OF TRANSPORTATION

IL ROUTE 176 OVER EAST SKOKIE DITCH
SUGGESTED STAGE OF CONSTRUCTION & TRAFFIC CONTROL
STAGE 1

SCALE: 1" = 50' SHEET NO. OF SHEETS STA. TO STA.

| | | | | |
|---------------------------|---------|--------|--------------|--------------------|
| F.A.U. RTE. | SECTION | COUNTY | TOTAL SHEETS | SHEET NO. |
| 1238 | C-B-1 | LAKE | 61 | 12 |
| | | | | CONTRACT NO. 60J67 |
| ILLINOIS FED. AID PROJECT | | | | |