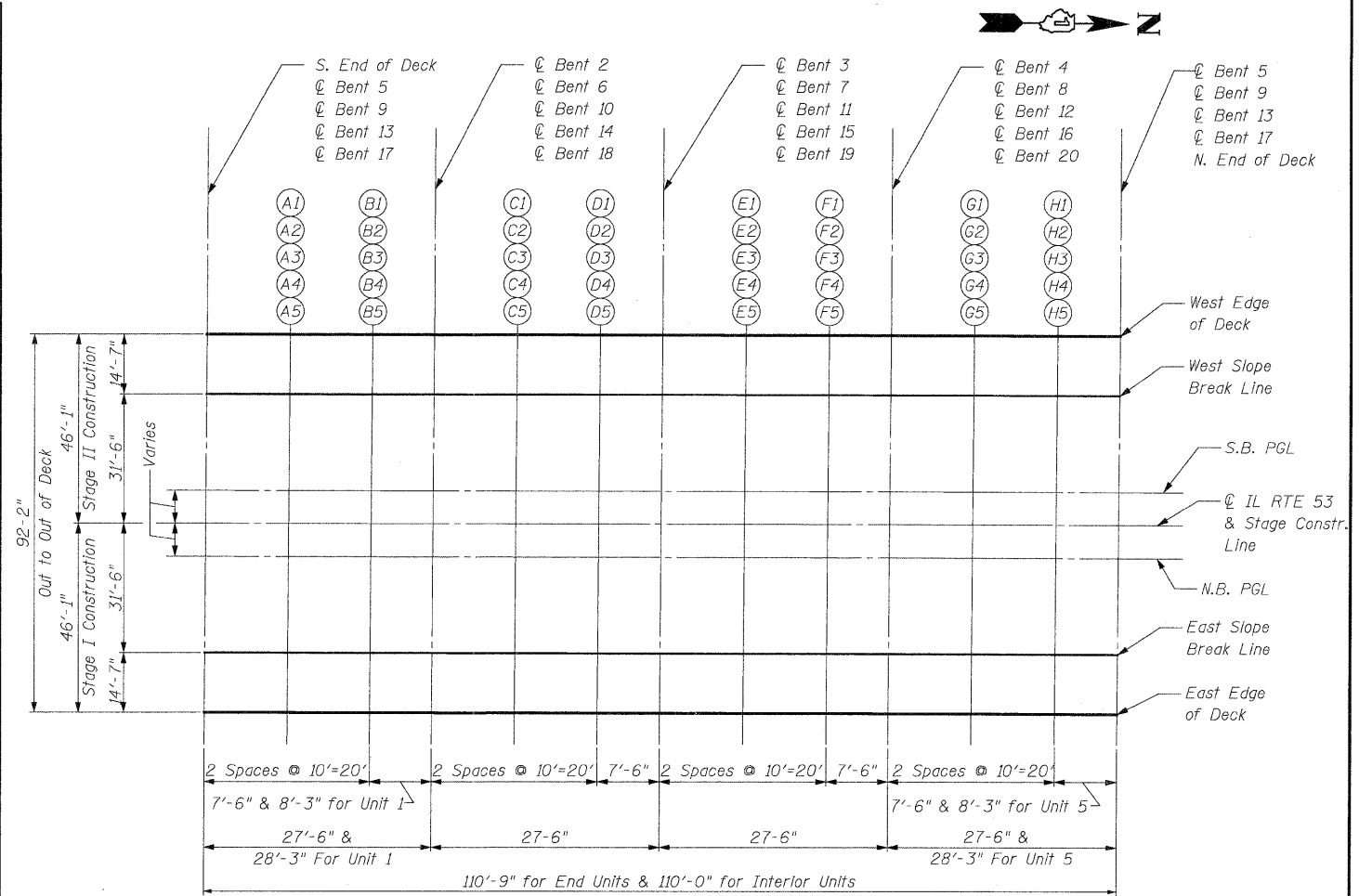


WEST EDGE OF DECK

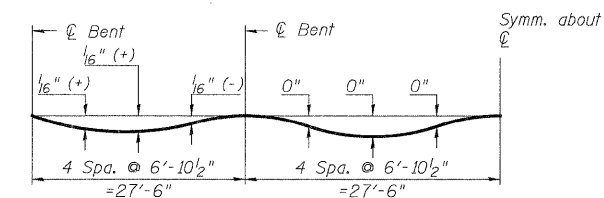
Location	Station	Offset	Theoretical Grade Elevations	Theoretical Grade Elevations Adjusted For Dead Load Deflection
S. End of Deck	240+59.25	-46.08	716.87	716.87
A1	240+69.25	-46.08	716.81	716.81
B1	240+79.25	-46.08	716.75	716.75
☉ Bent 2	240+87.50	-46.08	716.71	716.71
C1	240+97.50	-46.08	716.66	716.66
D1	241+07.50	-46.08	716.61	716.61
☉ Bent 3	241+15.00	-46.08	716.57	716.57
E1	241+25.00	-46.08	716.52	716.52
F1	241+35.00	-46.08	716.47	716.47
☉ Bent 4	241+42.50	-46.08	716.43	716.43
G1	241+52.50	-46.08	716.37	716.38
H1	241+62.50	-46.08	716.32	716.33
☉ Bent 5	241+70.00	-46.08	716.29	716.29
A2	241+80.00	-46.08	716.24	716.24
B2	241+90.00	-46.08	716.19	716.19
☉ Bent 6	241+97.50	-46.08	716.14	716.14
C2	242+07.50	-46.08	716.09	716.09
D2	242+17.50	-46.08	716.04	716.04
☉ Bent 7	242+25.00	-46.08	716.01	716.01
E2	242+35.00	-46.08	715.95	715.95
F2	242+45.00	-46.08	715.91	715.91
☉ Bent 8	242+52.50	-46.08	715.88	715.88
G2	242+62.50	-46.08	715.84	715.84
H2	242+72.50	-46.08	715.82	715.82
☉ Bent 9	242+80.00	-46.08	715.81	715.81
A3	242+90.00	-46.08	715.80	715.80
B3	243+00.00	-46.08	715.80	715.80
☉ Bent 10	243+07.50	-46.08	715.81	715.81
C3	243+17.50	-46.08	715.82	715.82
D3	243+27.50	-46.08	715.84	715.84
☉ Bent 11	243+35.00	-46.08	715.87	715.87
E3	243+45.00	-46.08	715.90	715.90
F3	243+55.00	-46.08	715.95	715.95
☉ Bent 12	243+62.50	-46.08	715.99	715.99
G3	243+72.50	-46.08	716.05	716.05
H3	243+82.50	-46.08	716.12	716.12
☉ Bent 13	243+90.00	-46.08	716.17	716.17
A4	244+00.00	-46.08	716.18	716.18
B4	244+10.00	-46.08	716.16	716.16
☉ Bent 14	244+17.50	-46.08	716.15	716.15
C4	244+27.50	-46.08	716.13	716.14
D4	244+37.50	-46.08	716.19	716.19
☉ Bent 15	244+45.00	-46.08	716.25	716.25
E4	244+55.00	-46.08	716.31	716.32
F4	244+65.00	-46.08	716.38	716.38
☉ Bent 16	244+72.50	-46.08	716.43	716.43
G4	244+82.50	-46.08	716.59	716.60
H4	244+92.50	-46.08	716.66	716.67
☉ Bent 17	245+00.00	-46.08	716.80	716.80
A5	245+10.00	-46.08	716.93	716.93
B5	245+20.00	-46.08	717.06	717.06
☉ Bent 18	245+27.50	-46.08	717.11	717.11
C5	245+37.50	-46.08	717.17	717.17
D5	245+47.50	-46.08	717.24	717.24
☉ Bent 19	245+55.00	-46.08	717.29	717.29
E5	245+65.00	-46.08	717.36	717.36
F5	245+75.00	-46.08	717.43	717.43
☉ Bent 20	245+82.50	-46.08	717.48	717.48
G5	245+92.50	-46.08	717.55	717.55
H5	246+02.50	-46.08	717.62	717.62
N. End of Deck	246+10.75	-46.08	717.67	717.67

WEST SLOPE BREAK

Location	Station	Offset	Theoretical Grade Elevations	Theoretical Grade Elevations Adjusted For Dead Load Deflection
S. End of Deck	240+59.25	-31.50	717.23	717.23
A1	240+69.25	-31.50	717.17	717.18
B1	240+79.25	-31.50	717.12	717.12
☉ Bent 2	240+87.50	-31.50	717.07	717.07
C1	240+97.50	-31.50	717.02	717.02
D1	241+07.50	-31.50	716.97	716.97
☉ Bent 3	241+15.00	-31.50	716.94	716.94
E1	241+25.00	-31.50	716.88	716.89
F1	241+35.00	-31.50	716.83	716.83
☉ Bent 4	241+42.50	-31.50	716.79	716.79
G1	241+52.50	-31.50	716.74	716.74
H1	241+62.50	-31.50	716.69	716.69
☉ Bent 5	241+70.00	-31.50	716.65	716.65
A2	241+80.00	-31.50	716.60	716.61
B2	241+90.00	-31.50	716.55	716.55
☉ Bent 6	241+97.50	-31.50	716.51	716.51
C2	242+07.50	-31.50	716.46	716.46
D2	242+17.50	-31.50	716.40	716.41
☉ Bent 7	242+25.00	-31.50	716.37	716.37
E2	242+35.00	-31.50	716.31	716.31
F2	242+45.00	-31.50	716.27	716.27
☉ Bent 8	242+52.50	-31.50	716.24	716.24
G2	242+62.50	-31.50	716.20	716.20
H2	242+72.50	-31.50	716.18	716.19
☉ Bent 9	242+80.00	-31.50	716.17	716.17
A3	242+90.00	-31.50	716.16	716.17
B3	243+00.00	-31.50	716.16	716.16
☉ Bent 10	243+07.50	-31.50	716.17	716.17
C3	243+17.50	-31.50	716.18	716.18
D3	243+27.50	-31.50	716.20	716.20
☉ Bent 11	243+35.00	-31.50	716.23	716.23
E3	243+45.00	-31.50	716.26	716.26
F3	243+55.00	-31.50	716.31	716.31
☉ Bent 12	243+62.50	-31.50	716.35	716.35
G3	243+72.50	-31.50	716.41	716.41
H3	243+82.50	-31.50	716.48	716.49
☉ Bent 13	243+90.00	-31.50	716.53	716.53
A4	244+00.00	-31.50	716.60	716.61
B4	244+10.00	-31.50	716.67	716.67
☉ Bent 14	244+17.50	-31.50	716.72	716.72
C4	244+27.50	-31.50	716.79	716.79
D4	244+37.50	-31.50	716.85	716.85
☉ Bent 15	244+45.00	-31.50	716.91	716.91
E4	244+55.00	-31.50	716.97	716.97
F4	244+65.00	-31.50	717.04	717.04
☉ Bent 16	244+72.50	-31.50	717.09	717.09
G4	244+82.50	-31.50	717.16	717.16
H4	244+92.50	-31.50	717.23	717.24
☉ Bent 17	245+00.00	-31.50	717.28	717.28
A5	245+10.00	-31.50	717.35	717.36
B5	245+20.00	-31.50	717.42	717.42
☉ Bent 18	245+27.50	-31.50	717.47	717.47
C5	245+37.50	-31.50	717.53	717.53
D5	245+47.50	-31.50	717.60	717.60
☉ Bent 19	245+55.00	-31.50	717.65	717.65
E5	245+65.00	-31.50	717.72	717.72
F5	245+75.00	-31.50	717.79	717.79
☉ Bent 20	245+82.50	-31.50	717.84	717.84
G5	245+92.50	-31.50	717.91	717.91
H5	246+02.50	-31.50	717.98	717.99
N. End of Deck	246+10.75	-31.50	718.03	718.03



PLAN DECK UNITS



DEAD LOAD DEFLECTION DIAGRAM

(Includes weight of concrete only.)

Note:
The above deflections are not to be used in the field if the engineer is working from the grade elevations adjusted for dead load deflections.

The bridge Contractor shall be responsible for any finish grading of the subgrade required to account for Dead Load Deflection and/or settlement of the subgrade prior to concrete curing. The cost for this grading shall not be paid for separately but shall be included in the Pay Item for Concrete Superstructure.

DESIGNED - J. Refvik
CHECKED - J. Vermillion
DRAWN - J. Vermillion
CHECKED - R. DiGiulio

**TOP OF SLAB ELEVATIONS I
STRUCTURE NO. 022-0012**

PATRICK ENGINEERING INC.
4970 VARSITY DRIVE
LISLE, IL 60532
patrickengineering.com

SHEET NO. SA5 OF SA37	F.A.P RTE. 2578	SECTION 532B	COUNTY DUPAGE	TOTAL SHEETS 781	SHEET NO. 609
	CONTRACT NO. 60477				
12/3/2010		ILLINOIS FED. AID PROJECT			