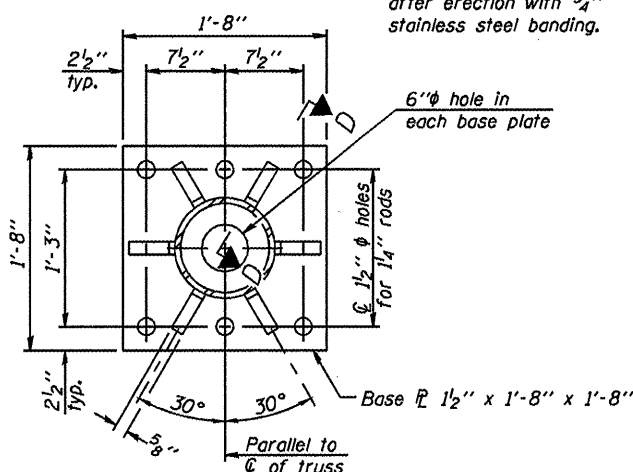
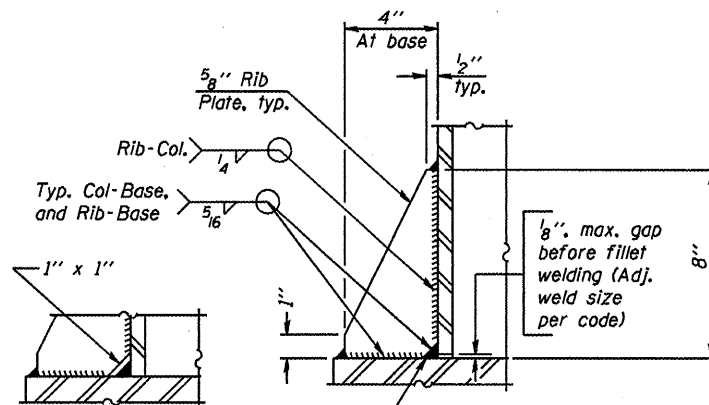


**DETAIL B**

Ribs shall be cut to fit slope of pipe.  
Stainless Steel Standard Grade Wire Cloth, 3" wide, 1/4" maximum opening with a minimum wire diameter of AWG. No. 16 with a minimum 2" lap. Secure to base plate after erection with 3/4" stainless steel banding.



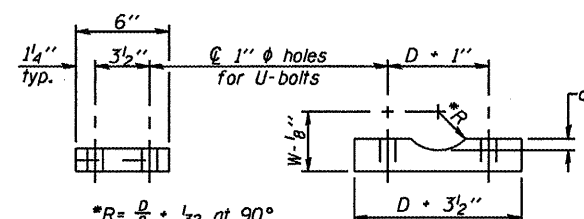
**SECTION B-B**



**SECTION D-D**

\*\* Alternate detail if welding col. to base plate first, then snip inside corner of ribs. Terminate weld on rib 1/4" from snip.

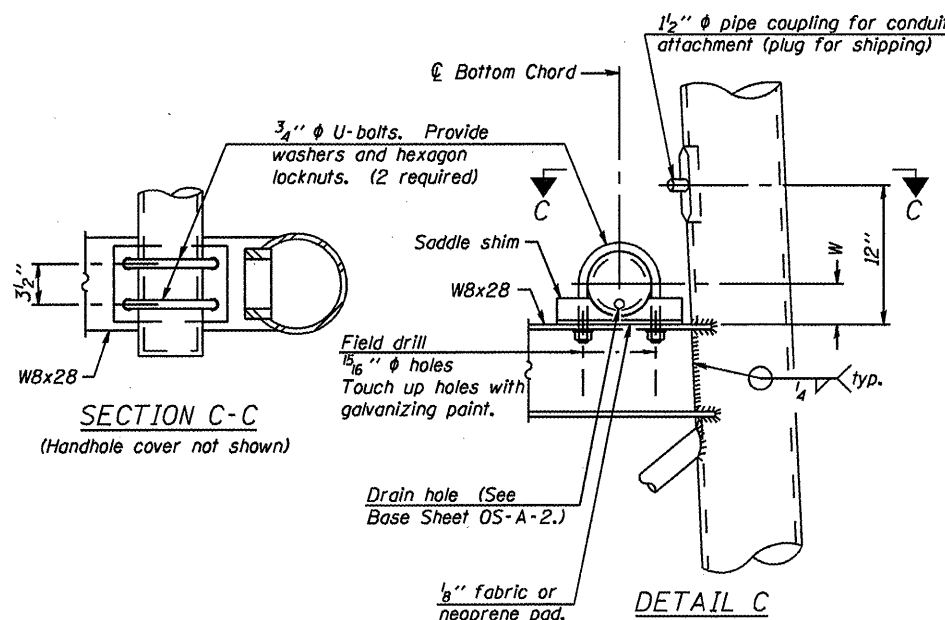
No snip req'd. at rib inside corner if placed before col. to base plate welding.



**SADDLE SHIM DETAIL**

ASTM B26 Alloy 356-F or ASTM B209 Alloy 6061-T651 (4 required per sign truss)

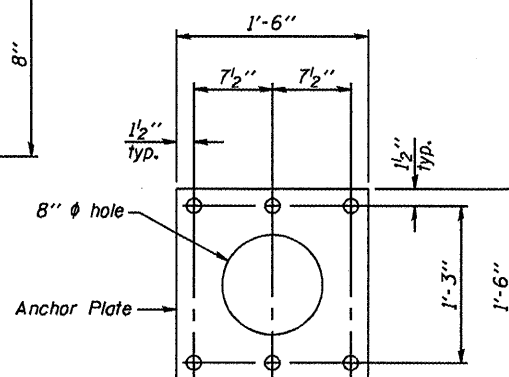
Truss Chord Nominal Dia.	a
5"	3 1/4"
5 1/2"	13 1/8"
6"	7 1/8"
6 1/2"	15 1/8"
7"	1"



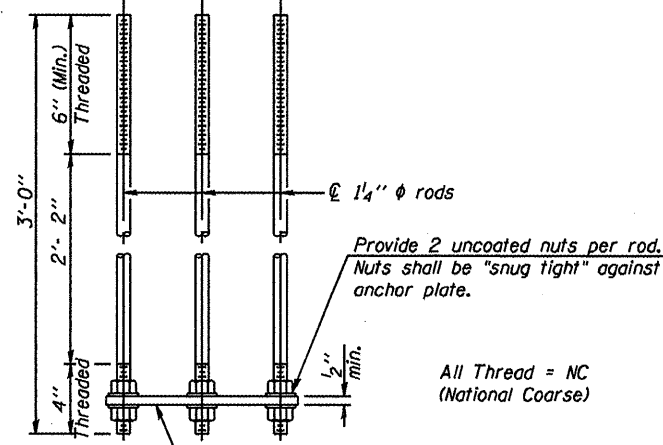
**SECTION C-C**

(Handhole cover not shown)

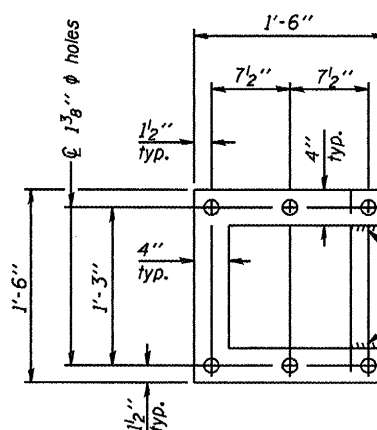
**DETAIL C**



**ANCHOR ROD DETAIL**  
Spread Footing Foundation

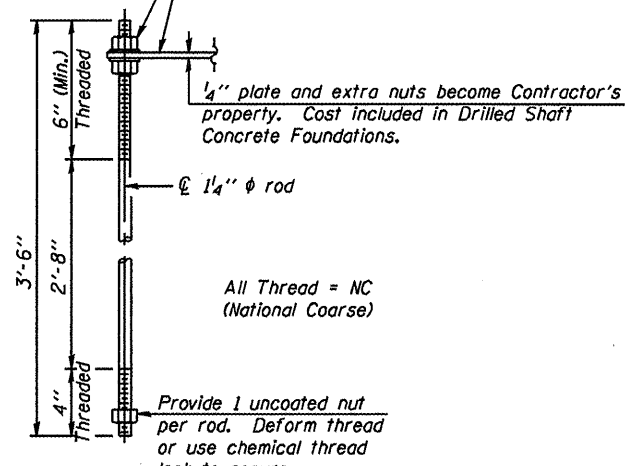


All Thread = NC (National Coarse)



**POSITIONING PLATE(S)**

Optionally may use four (4) separate bars. Weld to maintain perpendicularity.



All Thread = NC (National Coarse)

**ANCHOR ROD DETAIL**  
Drilled Shaft Foundation

Anchor rods shall conform to AASHTO M314 Grade 36 or 50 and meet Charpy V-Notch (CVN) energy of 15 lb.-ft. at 40° F. Galvanize upper 12" per AASHTO M232. No welding shall be permitted on rods.

**10" Ø PIPE SUPPORT FRAME DETAILS**

OS-A-6A

7-1-10

FILE NAME	USER NAME	DESIGNED	REVISED
		---	---
		---	---
		---	---
		---	---

STATE OF ILLINOIS  
DEPARTMENT OF TRANSPORTATION

OVERHEAD SIGN STRUCTURES  
SUPPORT FRAME DETAILS - ALUMINUM TRUSS

SECTION	COUNTY	TOTAL SHEETS	SHEET NO.
D-6 OVD SIN STR REPL 11-11	Logan/Sangamon	29	10
CONTRACT NO. 46134			

ILLINOIS FED. AID PROJECT