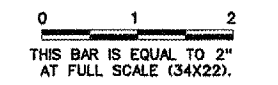


BL058

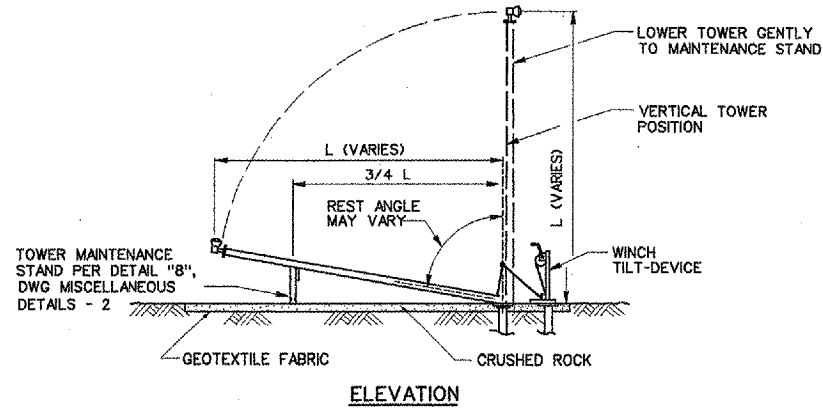
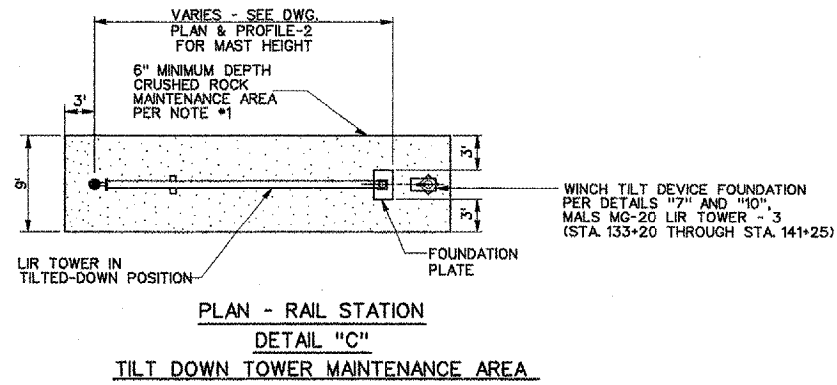
K:/BLOOMINGTONAP/0308503
 FILE: RAIL_MG20_LIR_TOWER_2
 UPDATE: 10-28-2004
 DATE: 11-01-2004
 XREF DWG: TB

REVISIONS		
NUMBER	BY	DATE



NOTE:

1. IN THE MAINTENANCE AREA AS SHOWN IN PLAN, TOPSOIL IS REMOVED TO A DEPTH OF 6" AND AGGREGATE IS PLACED OVER GEOTEXTILE AND COMPACTED TO THE FINISH GRADE SHOWN IN TABLE ON DWG PLAN AND PROFILE - 2.



BLOOMINGTON-NORMAL AIRPORT AUTHORITY
 CENTRAL ILLINOIS REGIONAL AIRPORT
 BLOOMINGTON, ILLINOIS

RAIL MG-20 LIR TOWER - 2

CMT
 CRAWFORD, MURPHY & TILLY, INC.
 CONSULTING ENGINEERS
© copyright cmt, inc.

DESIGN BY:	TM
DRAWN BY:	CMT
CHECKED BY:	<i>RM</i>
APPROVED BY:	<i>RM</i>
DATE:	12/25/2004
JOB No:	030850300

2/23/2004
 K:/BloomingtonAp/0308503/draw/sheets/RAIL_MG20_LIR_TOWER_2.dgn