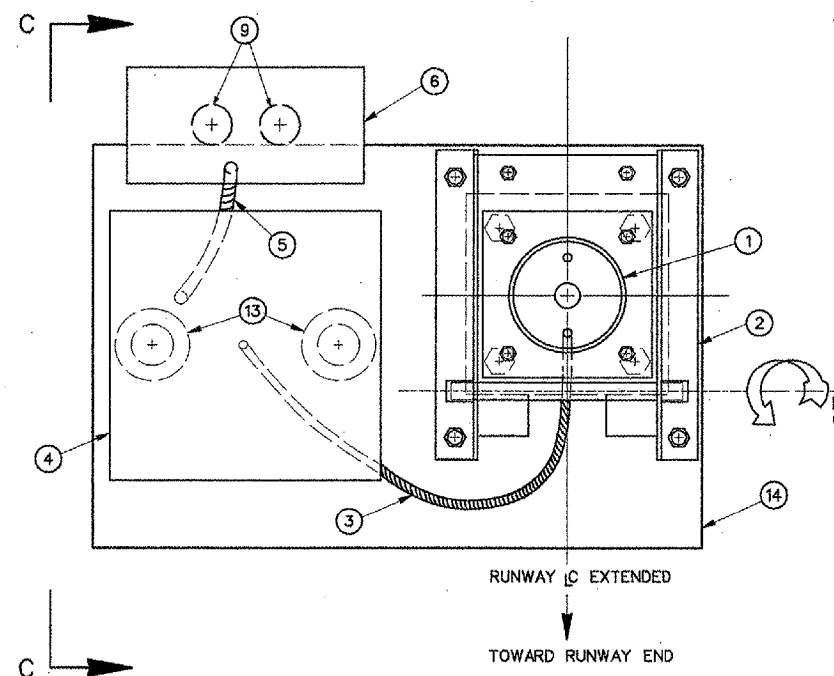
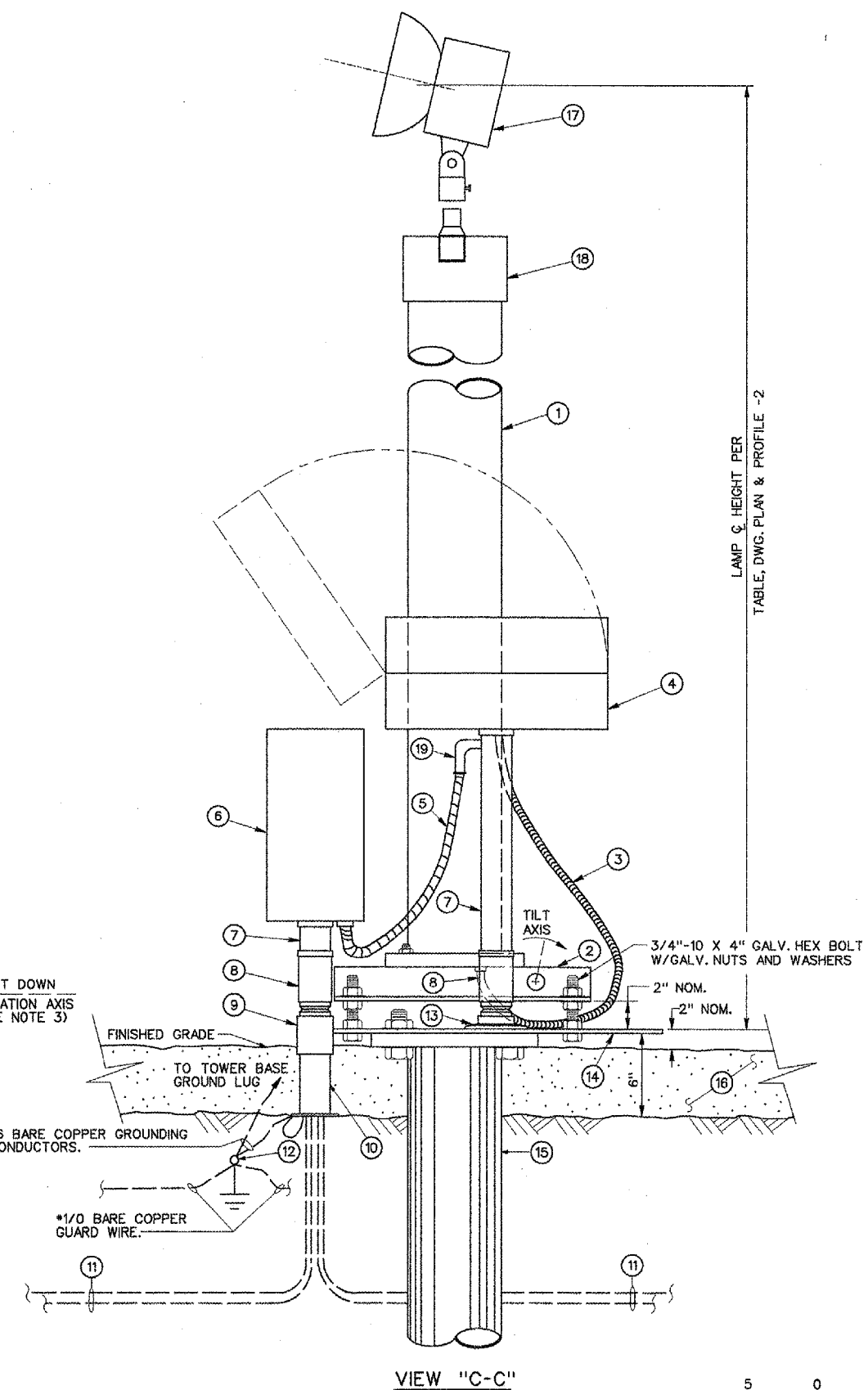


**FOUNDATION PLATE - LAYOUT  
 DETAIL "A"**



**LIR TOWER, JB-2 BOX, AND POWER SUPPLY MOUNTING  
 DETAIL "B"**  
 (SEE NOTE 3)



**VIEW "C-C"**

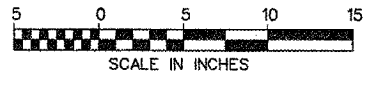
LAMP & HEIGHT PER  
 TABLE, DWG. PLAN & PROFILE -2

**NUMBERED LEGEND: 1- INSTALL THE FOLLOWING ITEMS.**

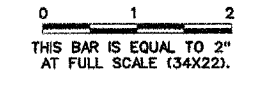
- ① FRANGIBLE LIR TOWER.
- ② TOWER BASE ASSEMBLY.
- ③ 3/4" LIQUID-TIGHT FLEXIBLE CONDUIT FROM FLASHER CABINET (4) TO THE BOTTOM OF THE TOWER STAND PLATE.
- ④ INDIVIDUAL RAIL FLASHER CONTROL CABINET, WITH FACTORY HUBS FOR CONDUITS (7).
- ⑤ 3/4" LIQUID-TIGHT FLEXIBLE CONDUIT.
- ⑥ JB-2 BOX.
- ⑦ 2" EMT CONDUIT WITH EMT-RIGID ADAPTER AND GRS CONNECTING TO BOX (6). SEE NOTE 4.
- ⑧ FRANGIBLE COUPLING.
- ⑨ 2" GALVANIZED RIGID STEEL CONDUIT COUPLING WELDED TO FOUNDATION PLATE (14). SEE NOTE 3 THIS SHEET & DETAIL "W" ON MISCELLANEOUS DETAIL SHEET.
- ⑩ 2" GALVANIZED RIGID STEEL CONDUIT WITH GROUNDING BUSHING EXTENDED TO BOTTOM OF CRUSHED ROCK.
- ⑪ INCOMING AND OUTGOING POWER AND CONTROL CABLES DWG. SYSTEM WIRING DIAGRAM - 1, & - 2.
- ⑫ 3/4" X 10' COPPERCLAD STEEL GROUNDING ELECTRODE (ROD). GROUNDING CONDUCTORS ARE WELDED TO THE ELECTRODE WITH EXOTHERMIC WELDS.
- ⑬ 2" GALVANIZED FLOOR FLANGE BOLTED OR WELDED TO FOUNDATION PLATE. SEE NOTE 3.
- ⑭ FOUNDATION PLATE PER DETAIL "A". ATTACHED TO ANCHOR FOUNDATION WITH 1" BOLTS.
- ⑮ SCREW-IN-ANCHOR FOUNDATION, A.B. CHANCE CAT. NO T112-0262.
- ⑯ CRUSHED ROCK OF TILT DOWN TOWER MAINTENANCE AREA PER DETAIL "C", RAIL MG-20 LIR TOWER - 2 SHEET.
- ⑰ FLASHER LAMP HEAD ASSEMBLY.
- ⑱ TUBE CAP ASSEMBLY.
- ⑲ 90° ELBOW FITTING TO THE EMT FOR THE 3/4" FLEXIBLE CONDUIT (5). SEE NOTE 5.

**NOTES: CONSTRUCT THE RAIL SUCH THAT:**

- 1. CABLING AND ELECTRICAL CONNECTIONS ARE PER DWGS SYSTEM WIRING DIAGRAM -1 & -2.
- 2. NO RIGID CONDUIT IS SUBSTITUTED FOR EMT.
- 3. WELDS AND ALL OTHER PLACES WHERE THE ZINC COATING HAS BEEN DAMAGED, ARE SANDED TO BRIGHT METAL AND COATED WITH ZINC RICH COMPOUND (ZRC).
- 4. EACH GALVANIZED RIGID STEEL CONDUIT ENTERING OR EXITING THE JB-2 BOX HAS A GROUNDING BUSHING AND A #6 BARE COPPER GROUNDING CONDUCTOR. THE #6 GROUNDING CONDUCTOR IS EXOTHERMICALLY WELDED TO A GROUNDING ELECTRODE.
- 5. THE CONTRACTOR DRILLS AND DE-BURRS A HOLE INTO THE 2" EMT CONDUIT AS SHOWN, JUST UNDER ITS ENTRANCE TO (4). THE CONTRACTOR SHALL SEAL AROUND THE FITTING TO PREVENT WATER LEAKING INTO THE EMT AND/OR INTO THE 3/4" FLEXIBLE CONDUIT.



REVISIONS		
NUMBER	BY	DATE



**BLOOMINGTON-NORMAL AIRPORT AUTHORITY  
 CENTRAL ILLINOIS REGIONAL AIRPORT  
 BLOOMINGTON, ILLINOIS**

**RAIL MG-20 LIR TOWER - 1**



DESIGN BY:	TM
DRAWN BY:	CMT
CHECKED BY:	RUN
APPROVED BY:	RUN
DATE:	12/25/2004
JOB No:	030850300

12/22/2004 K:\BloomingtonAp\0308503\Draw\Sheets\RAIL\_MG20\_LIR\_TOWER\_1.dgn