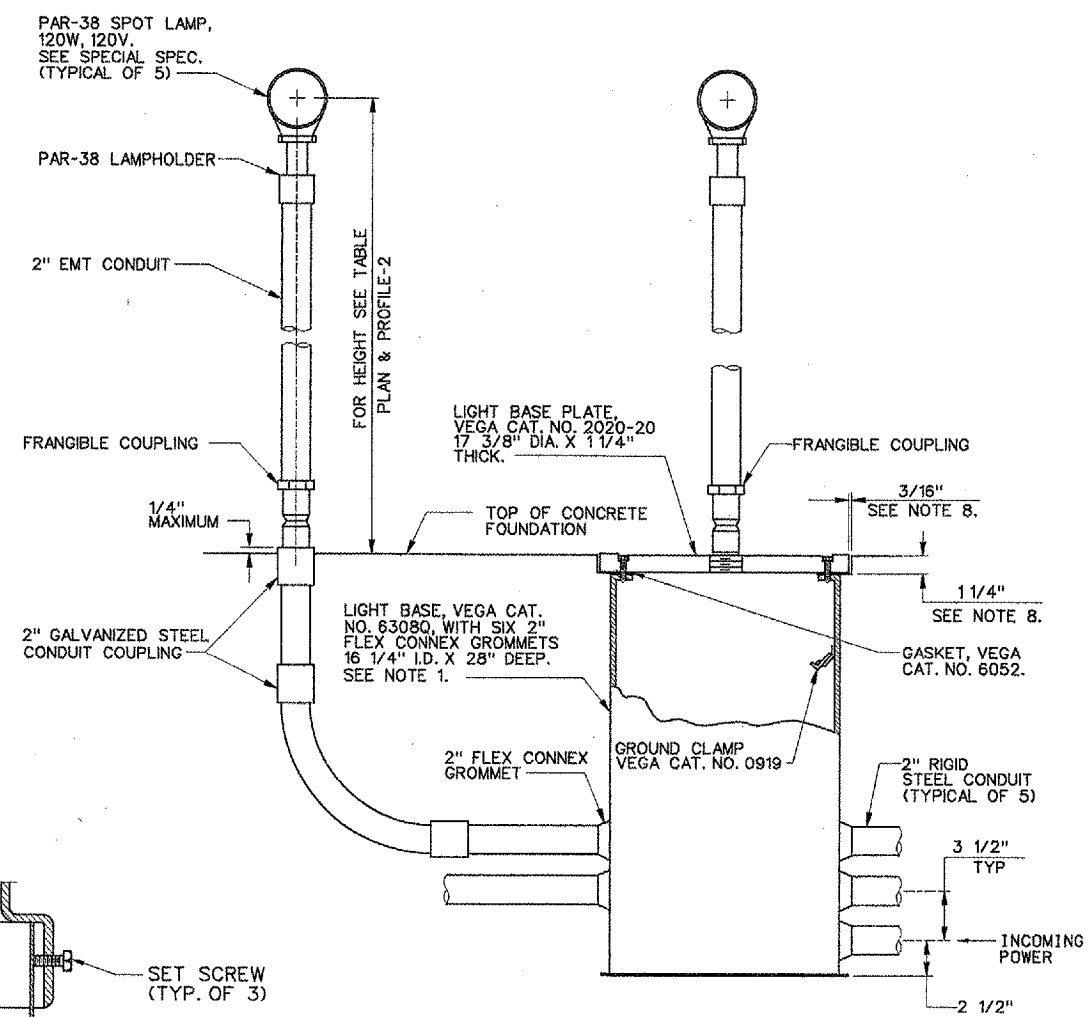
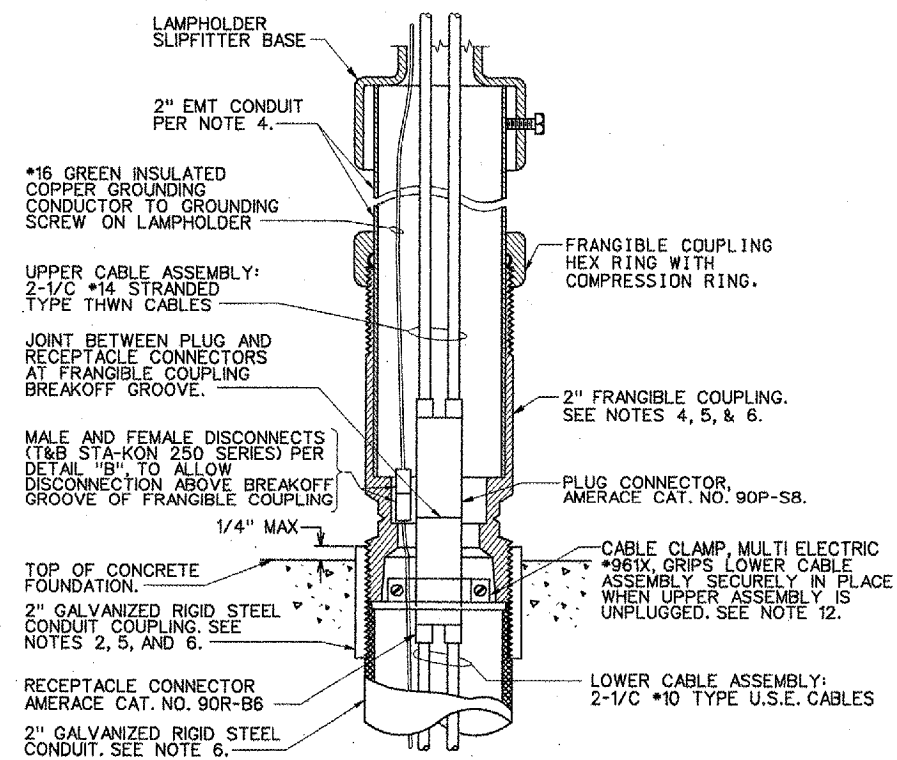
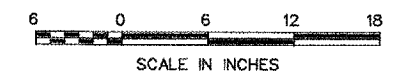


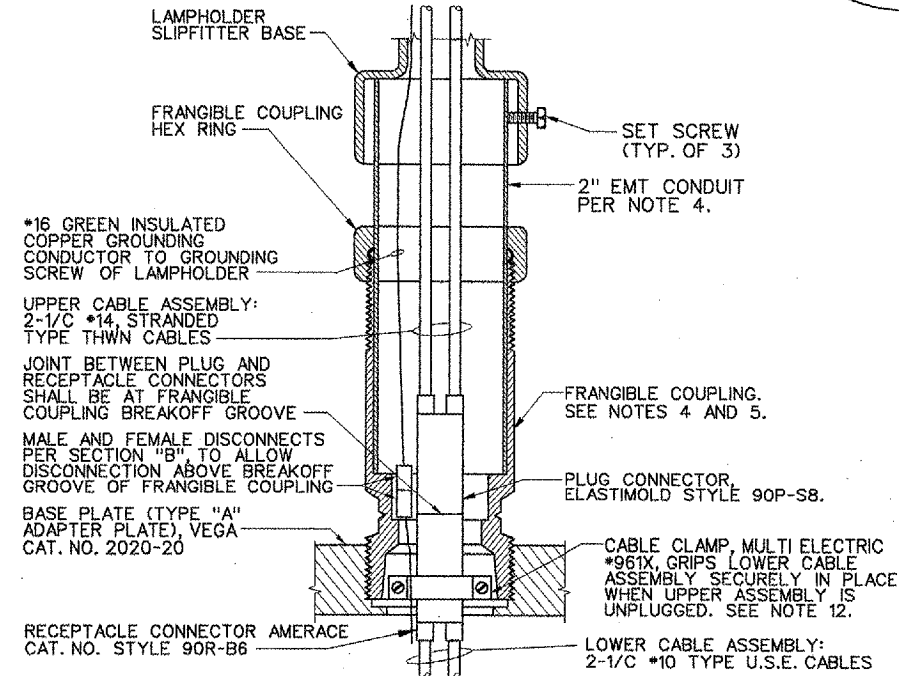
F DETAIL: CRUSHED ROCK MAINTENANCE AREA AT STATION 119+25 THRU 125+25 (STA. 2-5)



E DETAIL: LIGHT BASE AND CONDUITS



H DETAIL: FRANGIBLE COUPLING MOUNTING IN RIGID STEEL COUPLING
 NOT TO SCALE



G DETAIL: FRANGIBLE COUPLING MOUNTING IN BASE PLATE
 NOT TO SCALE

SEE SHEET MALS EMT LIGHT BAR - 1 FOR NOTES.

REVISIONS		
NUMBER	BY	DATE

0 1 2
 THIS BAR IS EQUAL TO 2" AT FULL SCALE (34X22).

BLOOMINGTON-NORMAL AIRPORT AUTHORITY
 CENTRAL ILLINOIS REGIONAL AIRPORT
 BLOOMINGTON, ILLINOIS

MALS EMT LIGHT BAR - 2

CMT
 CRAWFORD, MURPHY & TILLY, INC.
 CONSULTING ENGINEERS

DESIGN BY:	TM
DRAWN BY:	CMT
CHECKED BY:	RW
APPROVED BY:	RW
DATE:	12/25/2004
JOB No:	030850300