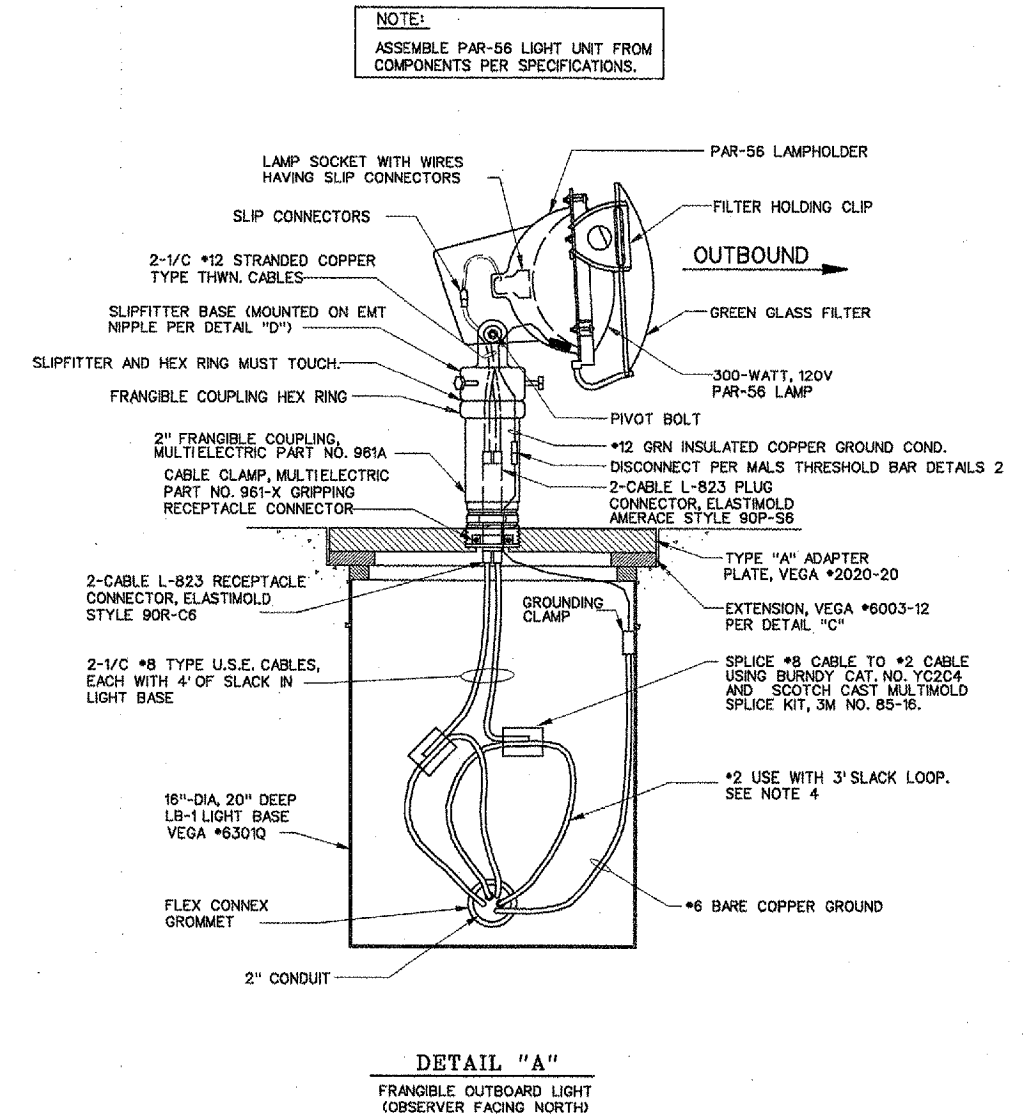


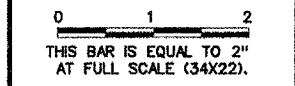
THRESHOLD BAR LAYOUT & CABLING SCHEMATIC
 SCALE: NONE

- MALS FRANGIBLE THRESHOLD LIGHT BAR NOTES:**
- SEE SPECIFICATION FAA-GL-918C SUBSECTION 13A.2. THE CONTRACTOR SHALL INSTALL THE LIGHT BAR SUCH THAT:
1. THE LIGHT BAR MEETS THE INSTALLATION TOLERANCES REQUIRED IN SPECIFICATION FAA-GL-918C PARAGRAPHS 13A.2b AND 13A.2c. SEE NOTE 7. EXCEPTION: INDIVIDUAL PAR-56 LAMP CENTERLINE ELEVATIONS WILL VARY WITH EXISTING GRADE CROWN ELEVATION THROUGHOUT THE THRESHOLD BAR. THE VARIATION IS PERMISSIBLE.
 2. EMT CONDUIT IS USED WHERE SPECIFIED WITHOUT SUBSTITUTION. EMT IS CUT SQUARE AND DEBURRED.
 3. ANTI-SEIZE COMPOUND IS APPLIED TO THE THREADS OF THE FRANGIBLE COUPLING AND OF THE LIGHT BASE FLANGE BOLTS.
 4. EACH CABLE ENTERING OR EXITING A SPLICE HAS A SLACK LOOP OF 3'. IN SPLICES, CONNECTIONS OF 2/0 CABLES TO *2 CABLES SHALL BE MADE WITH BURNDY CAT. NO. YC26C2. CONNECTIONS OF *2 CABLES TO *8 CABLES SHALL BE MADE WITH BURNDY CAT. NO. YC2C4 COPPER CRIMPIT. SPLICE BODIES SHALL BE MADE WITH 3M SCOTCHCAST MULTIMOLD SPLICING KITS, 3M NO. 85-16.



REVISIONS

NUMBER	BY	DATE



BLOOMINGTON-NORMAL AIRPORT AUTHORITY
 CENTRAL ILLINOIS REGIONAL AIRPORT
 BLOOMINGTON, ILLINOIS

MALS THRESHOLD BAR DETAILS - 1

CMT
 CRAWFORD MURPHY & TILLY, INC.
 CONSULTING ENGINEERS
 © Copyright CMT, Inc.

DESIGN BY:	TM
DRAWN BY:	CMT
CHECKED BY:	
APPROVED BY:	
DATE:	12/25/2004
JOB No:	030850300